

Your new

Suzie & Suzie Professional spinning wheel

majacraft

all you need to spin your dreams...



Welcome to the Majacraft family

Congratulations on purchasing a new Majacraft Suzie or Suzie Professional.

We are very proud of these wheels and hope that it allows you to express your creativity in new and exciting ways. Take time to read through the instructions before assembly, it really is worth it.

One of our goals is to make our wheels as easy and simple to use as possible, so they become almost invisible as you express your creativity through fibre.

If you were not already aware, we have designed all of our craft tools and accessories to be compatible with each other. If you have an interest in a specific technique, we are likely to have specialist accessories that will fit straight on to this wheel or tools to make creating easy. Talk to your dealer, visit our web site or email us directly and we will do what we can to help.

Thank you for choosing Majacraft, it is your belief in us that drives our innovation and creativity in building captivating tools for you.

From the team at Majacraft, Good spinning!

Fastener Details



Joiner screws - 25mm (1")

To attach the rubber joiners on the conrods to the pedals

Crank screws - M5x20mm (3/4")

To attach the crank assembly to the drive wheel

Stop bolt - JCB 25mm (1")

To limit the movment of the handle

Base bolt - JCB 30mm (1 1/8")

To hold the base and stem assembly together

Head bolt - JCB 60mm (2 1/2")

To clamp the head in the handle

Assembling a Suzie & Suzie Professional

These instructions demonstrate how to assemble your Majacraft Suzie and Suzie Professional spinning wheel

1. Prepare the components

We recommend that you find a clear work area where you can lay out all the components for working on them.

The following tools are provided by Majacraft

- 4mm allen T-wrench
- 3mm allen T-wrench
- 2mm allen T-wrench

You will also need the following tools:

- Posidrive (Philips) screwdriver

Your wheel has been assembled at our workshop; it has been tested; it has been spun on; all screws have been pre-fitted and some have been removed for partial disassembly.

Please unpack with care and retain the packaging. In the box will be:

- 1 Base/Pedal assembly
- 1 Stem/Handle/Drive wheel assembly (SHDW assembly)
- 4 Plastic Bobbins
- 1 Spinning Head
- Pulley (1 for Suzie, 2 for Suzie Professional)
- Flyer (1 for Suzie, 2 for Suzie Professional)
- 1 Crank and Conrod assembly
- 1 Hardware Bag (screws, etc) spare screws are included

2. Insert handle stop

Required:

- 1 - M6 25mm JCB (1") bolt (*in the hardware bag*)
- 4mm allen T-wrench
- Stem/Handle/Drive wheel assembly



2a



2b

Remove the handle nut and then slide the drive wheel out of the SHDW assembly. Place the handle and nut to one side. There is a small star washer on the drive shaft, take care it does not drop off when you remove the drive wheel or remain stuck to the black acetyl bush.



2c



2d

Turn the handle assembly over so the small threaded hole near the handle pivot is on the bottom and position the handle so it makes a 90 degree angle between the stem and handle. Using the T-wrench, carefully screw the 25mm JCB bolt in until it is tight.



2e



2f

Check the star washer is still on the drive shaft. Now slide the drive wheel and drive shaft back into the stem/handle assembly. When the drive shaft is in place then screw the front handle nut on and tighten it up.



2g



2h

3. Attach stem to base assembly

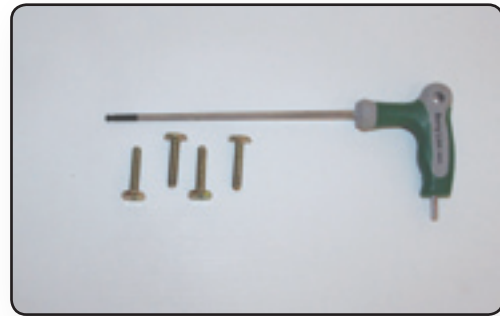
Required:

4 - M6x30mm JCB (1 1/4") bolts (*in the hardware bag*)

4mm allen T-wrench

Stem/Handle/Drive wheel assembly

Base/Pedal assembly



3a



3b

Position the Base assembly on the flat surface. Now slide the SHDW assembly into the Base assembly and carefully align the stem holes with the base side plate holes. Insert the JCB bolts through the holes and into the SHDW assembly. Partially tighten the bolts, checking that they are threaded in correctly before finally tightening all bolts.



3c



3d

The drive wheel should go on the same side of the Base/Pedal assembly as the narrow end of the pedals.



3e

4. Spinning Head

Required:

1 M6x60mm Gold JCB (2 1/2") bolt (*in the handle assembly*)

4mm allen T-wrench

1 Wood spacer tube (*in the handle assembly*)

Spinning Head



4a



4b



4c

The M6 60mm bolt and wood spacer are attached to the handle. You must remove it first. Take the spinning head and slide it down into the handle. Push the JCB bolt in a little way through the hole in the top of the handle. Align the wooden spacer tube in the handle so the bolt will can be pushed through the centre.

Screw the JCB bolt into place without tightening it fully. Position the head near the top of the handle and then tighten the JCB bolt firmly. There is no need to over-tighten this.

The spinning head can be raised or lowered to suit the tensioning of the drive belt and the height at which you wish to spin.



4d

5. Pulley

Required:

1 - Pulley

2mm allen T-wrench

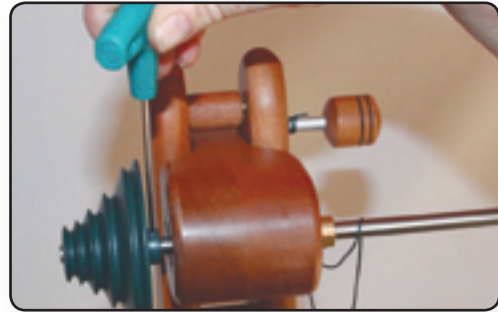


5a



5b

When you slide the pulley on the flyer shaft, it is important that the grub screw is lined up above the flat that has been ground on the flyer shaft. When the pulley is correctly aligned, use the allen key to tighten the grub screw.



5c



5d

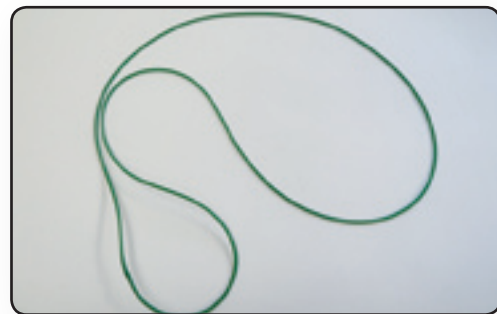
6. Drive Band

Required:

1 - Green drive band (*in the hardware bag*)



6b



6a

The green drive band goes on the grooves on the drive wheel and then through one of the grooves on the whorl. It is important that the drive belt is reasonably tight otherwise the treadling will feel heavy.

7. Crank Assembly

Required:

3 - M5x20mm silver counter-sunk screws
3mm allen T-wrench



7a

The drive wheel has been predrilled with the holes which line up with the holes on the crank assembly. Make sure the drive belt is on before starting!

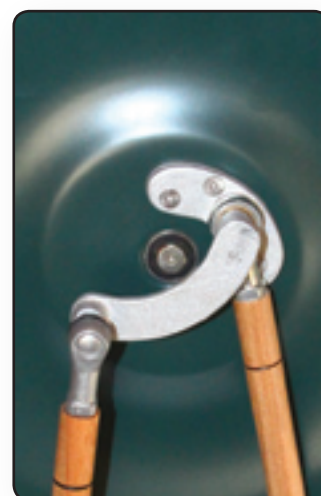


7b

Align the holes on the drive wheel with the holes in the crank assembly and screw it into place using the 3mm Allen key. It is recommended that you insert the centre bolt first. This will reduce your chances of possibly scratching your drive wheel.

Do not fully tighten the centre bolt until you have aligned and started screwing in the two bolts on the sides.

When the three bolts are all in place, you can finish tightening them up.



7c

8. Conrods to Pedals

Required:

Posidrive screwdriver

The green joiners have already been put in place in the wooden conrods. Place the wheel in front of you so the crank and drive wheel are facing you.

We will start with the pedal on your left hand side. Select the conrod that is CLOSEST to YOU. It is on the end of the curved arm and is attached to the crank assembly with the special right angle rod end connector. Push the green joiner into the hole at the end of the pedal on your left until it protrudes by about 2mm. Screw the 25mm gold screw into the hole on the side of the pedal so it holds the green joiner in place.

majacraft



8a



8b



8c

Now work on the pedal on your right. Obviously there will only be one available conrod now. The one that is CLOSEST to the DRIVE WHEEL. Push the green joiner through the hole in the pedal end into the right hand pedal. It should protrude through the bottom of the pedal about 2mm. Check the alignment of the rod end in the crank assembly as shown in the images below. You may need to twist the green joiner in the pedal to correct the alignment. When the rod end is aligned correctly - parallel with the face of the drive wheel - screw the 25mm screw into place. The screw should only be tightened until the head just touches the side of the pedal. DO NOT OVERTIGHTEN!



8d

CORRECT



8e

INCORRECT



8f

EXTRA

If you are not certain of the connection arrangement, here is a full description. Place the wheel directly in front of you so you are looking at the crank assembly attached to the drive wheel. The rubber joiner that is on the conrod that is closest to you goes into the hole in the pedal on your left. The joiner on the conrod that is furthest from you goes into the hole in the pedal that is on your right.

9. Bobbin and Flyer

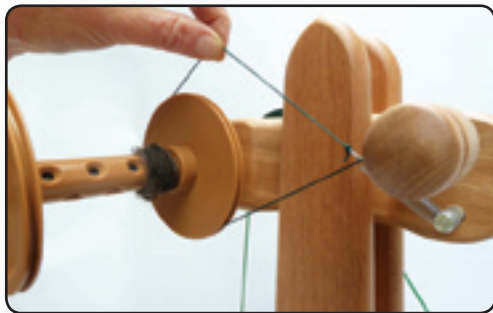
Required:

- 1 - Bobbin
- 1 - flyer

If you have some petroleum jelly or vaseline, rub a small smear onto the flyer shaft. This has already been done at the factory so is not essential. Now slide the bobbin on.



9a



9b



9c

At this point screw the flyer on to the flyer shaft. It may help to hold the whorl with your left hand and tighten the flyer with your right (assuming you are right handed). It may also be treadled on by holding the flyer in one hand and treadling the wheel in an anticlockwise direction.

If assembling the Suzie Professional, the same process applies for putting on the e-flyer.

10. Bobbin Bars

Required:

- 2 - Bobbin bars (*in the hardware bag*)



10a

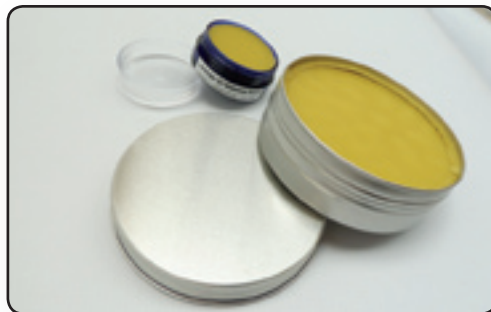


10b

Slip the two brass bobbin bars into the bobbin storage block on the base assembly.

11. Polish

At this point, we recommend that you polish your Suzie or Suzie Professional using Majacraft Lavender Polish or alternatively a standard wood polish. While not essential, it will help keep your wheel looking beautiful into the future.



11a

Your Majacraft Suzie or Suzie Professional is now assembled and you are ready to start on a new spinning adventure! From the team at Majacraft, we wish you great spinning in the future.



Note

The images contained in this instruction manual are a guide only. There may be slight differences between these and your wheel.

Notes