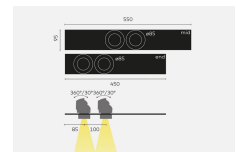
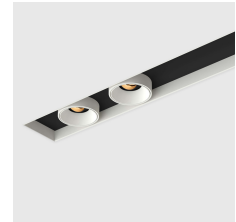


kreon specification sheet

your selection	KR934681-9027-SP-DD holon 80 HE twin in-cana, end, LED, white
KR775201	tracks and profiles Cana 80 recessed mounted profile, white
KR775202	tracks and profiles Cana 80 recessed mounted profile, black
KR705610	plasterkits trimless plasterkit corner cut 90°

product	KR934681-9027-SP-DD holon 80 HE twin in-cana, end, LED, white
----------------	---

general information	
application	luminaire for recessed or surface mounted profile
direction of mounting	↓→
protection class	1
ip classification	40
input voltage	230V
electric gear	included
dimming	DALI
visible dimensions	
LxW	450mm x 90mm
fixture dimensions	
LxW	85mm x 85mm (2x)



kreon nv
 Industrieweg Noord 1152
 3660 Oudsbergen
 Belgium
 T +32 89 81 97 80
 F +32 89 81 97 90
 M mailbox@kreon.com
 www.kreon.com

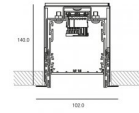
It is possible that the
 product images do not
 match the selected
 configuration

illuminant	
output	1472lm
CCT	2700K
CRI	90+
lamptype	LED
symbol	
wattage	2x 9,9W
voltage	230V
rotation/inclination	360°/30°
beam angle	spot (30°)

Combinations can be specified on order form.
 The coverplates on the inside of the profile are always black
 Only one optional accessory per luminaire.

kreon specification sheet

required accessories	
tracks and profiles	KR775201 Cana 80 recessed mounted profile, white
general information	
ip classification	40
input voltage	230V
dimming	DALI
full dimensions	
LxWxH	max. 6000mm x 102mm x 140mm
material and surface	
profile	
material	aluminium, extruded
colour	white / black
cut-out dimensions	
in plasterboard	
LxWxH	L x 125mm x 185mm
panel	max. 26mm
remarks	
The profile is supplied pre-assembled	
Max. length of a single run profile = 6000mm. Shipping length depends on transport possibilities.	



kreon specification sheet

tracks and profiles	KR775202 Cana 80 recessed mounted profile, black
general information	
ip classification	40
input voltage	230V
dimming	DALI
full dimensions	
LxWxH	max. 6000mm x 102mm x 140mm
material and surface	
profile	
material	aluminium, extruded
colour	black / black
cut-out dimensions	
in plasterboard	
LxWxH	L x 125mm x 185mm
panel	max. 26mm
remarks	<p>The profile is supplied pre-assembled</p> <p>Max. length of a single run profile = 6000mm. Shipping length depends on transport possibilities.</p>
optional accessories	
plasterkits	KR705610 trimless plasterkit corner cut 90°

