

# STRANGE

25-07-2016

## 2.0 LED

LED 2x7/10W | 350-500mA | 18Vf | COB 3-step | excl. power supply

CE <img alt="IP20 symbol" data-bbox="95 214 115 230"/> IP20 <img alt="960°C symbol" data-bbox="125 214 145 230"/> 960°C <img alt="0.3m symbol" data-bbox="155 214 175 230"/> 0,3m <img alt="TE symbol" data-bbox="185 214 205 230"/> TE <img alt="35°/35° symbol" data-bbox="215 214 235 230"/> 35°/35° <img alt="355° symbol" data-bbox="245 214 265 230"/> 355°

white texture  
black texture

131261W\_  
131261B\_

### LIGHT COLOUR

2700K | >90CRI | 2x420-590lm | 18Vf

3

3000K | >90CRI | 2x470-640lm | 18Vf

5

1800-2850K | >90CRI | 2x320-440lm | 18Vf

9

### ALWAYS USE

plaster kit  
for power supplies see our catalogue

90017117

## 2.0 PAR16

<img alt="Speaker icon" data-bbox="55 403 75 420"/> 2xPAR16 max. 35W | GU10 | 220-240VAC | 50-60Hz

CE <img alt="IP20 symbol" data-bbox="85 419 105 437"/> IP20 <img alt="960°C symbol" data-bbox="115 419 135 437"/> 960°C <img alt="0.3m symbol" data-bbox="145 419 165 437"/> 0,3m <img alt="35°/35° symbol" data-bbox="175 419 195 437"/> 35°/35° <img alt="355° symbol" data-bbox="205 419 225 437"/> 355° <img alt="DO NOT COVER symbol" data-bbox="235 419 255 437"/> DO NOT COVER

white texture  
black texture

131220W0  
131220B0

### ALWAYS USE

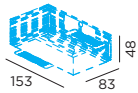
plaster kit

90017117

### OPTIONAL

for PAR16 lamps see our catalogue

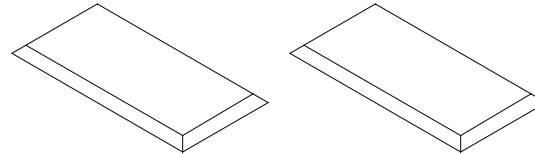
plaster kit (has to be ordered separately)



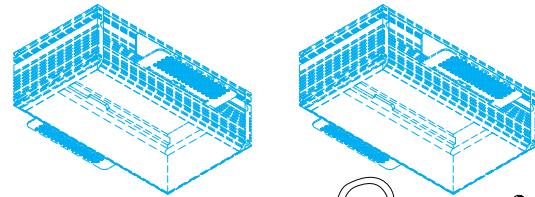
### 2.0 LED

### 2.0 PAR16

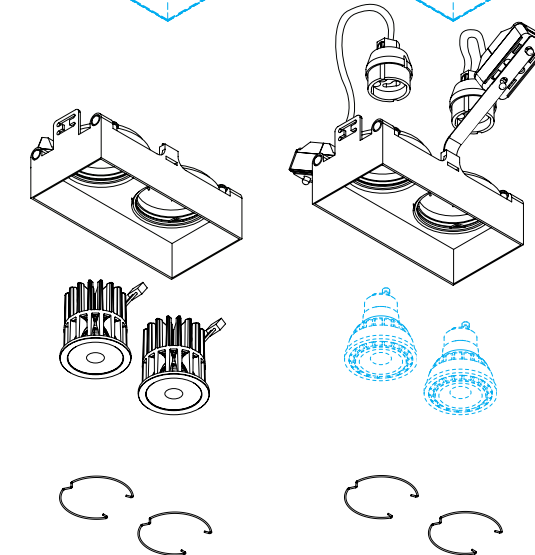
①



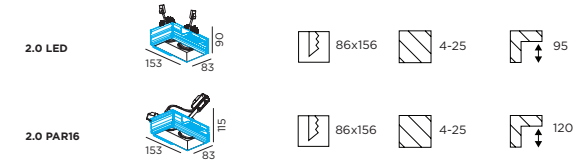
②



④



## DIMENSIONS

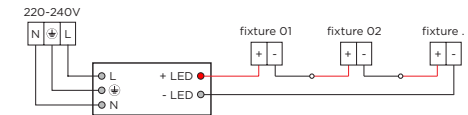


## MOUNTING INSTRUCTION

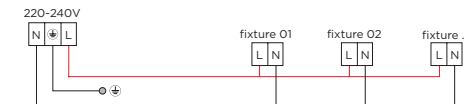
- ① Make a hole in the ceiling according to the prescribed dimensions (always use a plaster kit)
- ② Insert the upper part of the fixture into the ceiling and plaster the borders seamlessly

## POWER CONNECTION

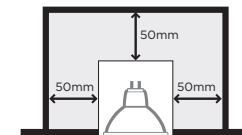
- ③ SERIAL CONNECTION - for LED  
Always use **POWER SUPPLY** according to the specifications of the LED-module



### PARALLEL CONNECTION - for PAR16



- ④ Insert the fixture in the upper part. Place the LED-module or PAR16 lamp and fix with spring.
- ⑤ SAFETY DISTANCE FOR HALOGEN LAMPS .....



WEVER & DUCRÉ  
LIGHTING

www.weverducre.com

INSTALLATION  
INSTRUCTIONS