

WIRO GLOBE

12-05-2016

1.0

QA60 max. 60W | E27 | 220-240VAC | 50-60Hz | 6.00kg

CE IP20 960°C 0,9m

white texture	2281E0W0
black texture	2281E0B0
rusty + black texture	2281E0R0

for lamps see our catalogue

2.0

QA60 max. 60W | E27 | 220-240VAC | 50-60Hz | 5.00kg

CE IP20 960°C 0,9m

black texture	2282E0B0
---------------	----------

for lamps see our catalogue

3.0

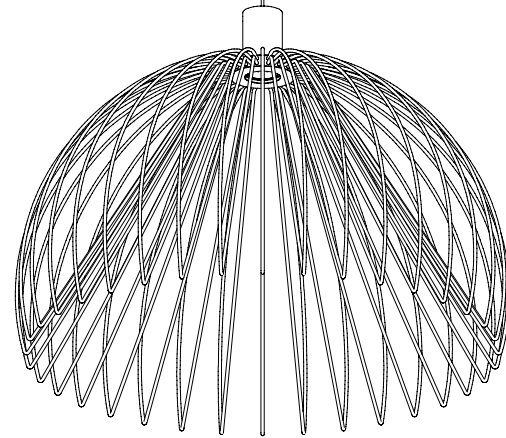
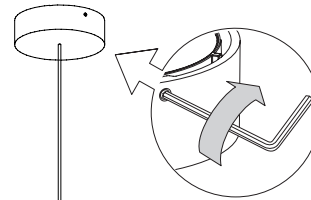
QA60 max. 60W | E27 | 220-240VAC | 50-60Hz | 3.00kg

CE IP20 960°C 0,9m

white texture	2283E0W0
black texture	2283E0B0

for lamps see our catalogue

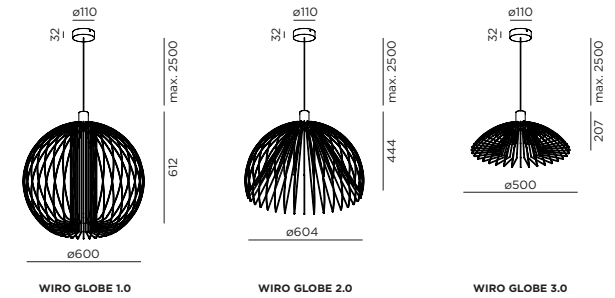
①



⑤



DIMENSIONS

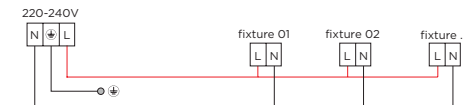


① MOUNTING INSTRUCTION

Mount the ceiling base on the ceiling

② POWER CONNECTION

PARALLEL CONNECTION



③ Secure strain relief

④ Adjust cable length

⑤ Insert lamp in the socket (lamp is not included)

⑥ Mount the fixture by screwing it on the socket.
ONLY FOR WIRO GLOBE 1.0

For more detailed information see page 2.



WEVER & DUCRÉ
LIGHTING

www.weverducre.com

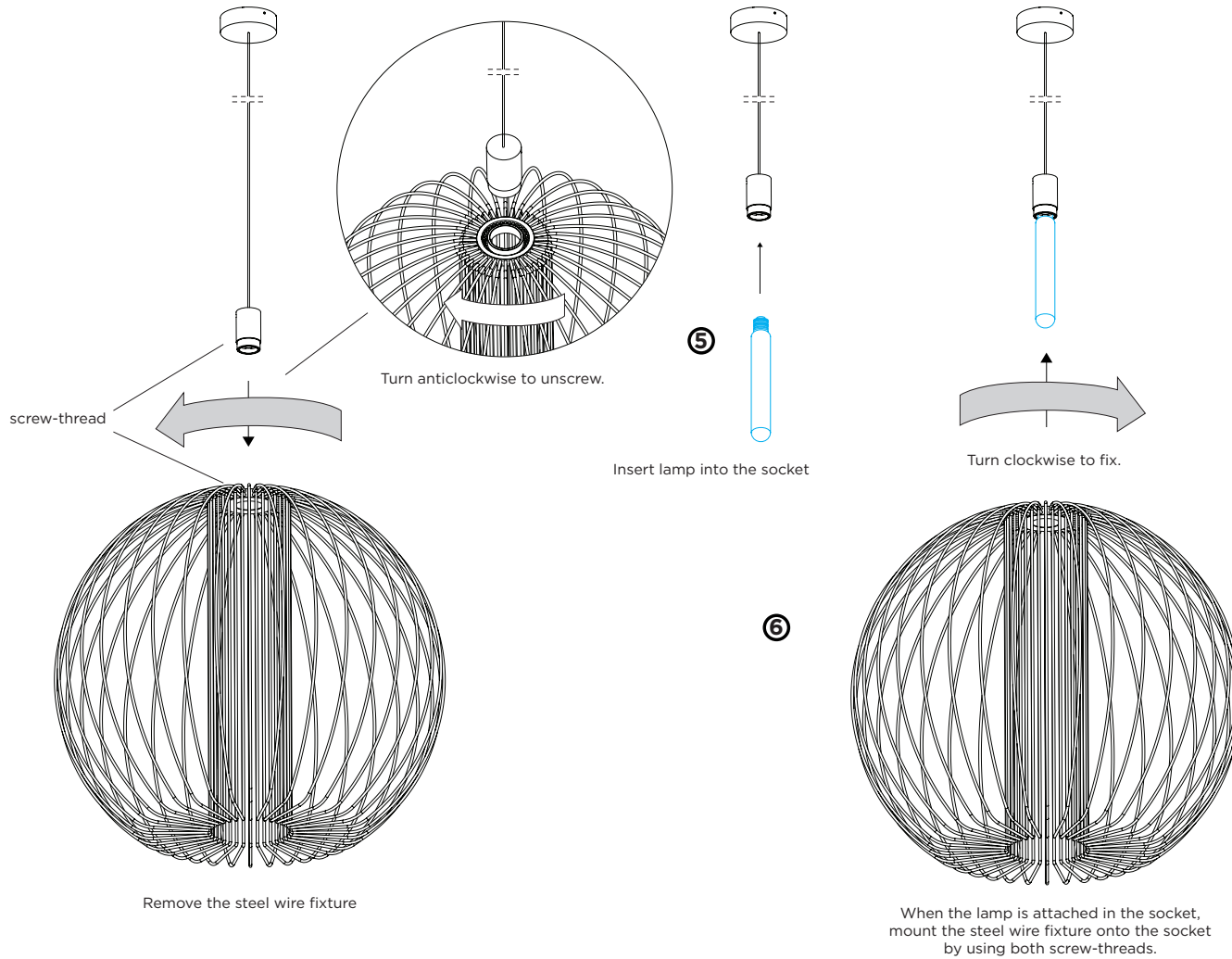
INSTALLATION
INSTRUCTIONS

WIRO GLOBE

DETAILED MOUNTING INSTRUCTION

12-05-2016

DETAILED MOUNTING INSTRUCTION.



- ⑤ Insert lamp in the socket (lamp is not included)
- ⑥ Mount the fixture by screwing it on the socket.
ONLY FOR WIRO GLOBE 1.0

