

BOX MINI

20-Jun.-2016

1.0

PAR16 max. 15W | GU10 | 220-240VAC | 50-60Hz

CE IP20 0.9m

white texture	300120W0
aluminium brushed	300120L0
copper	300120P0
black texture	300120B0

OPTIONAL
for PAR16 lamps see our catalogue

2.0

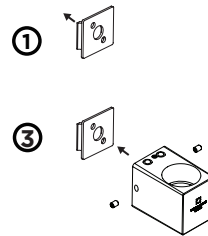
2xPAR16 max. 15W | GU10 | 220-240VAC | 50-60Hz

CE IP20 0.9m

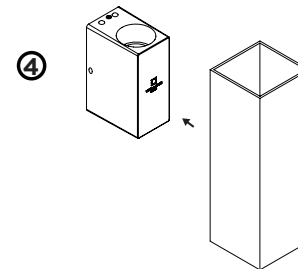
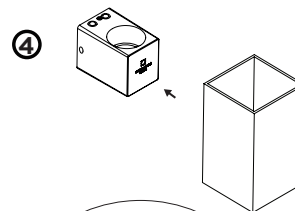
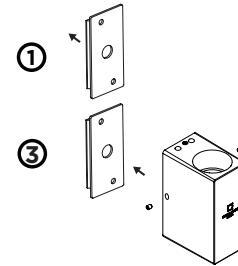
white texture	301120W0
aluminium brushed	301120L0
copper	301120P0
black texture	301120B0

OPTIONAL
for PAR16 lamps see our catalogue

BOX MINI 1.0

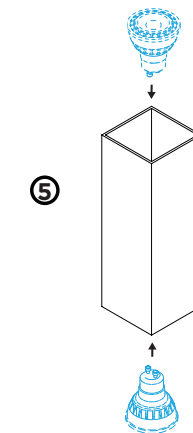
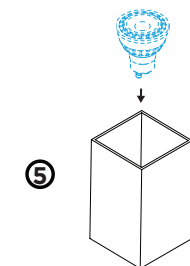
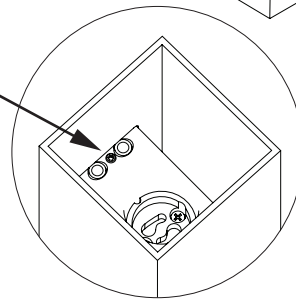


BOX MINI 2.0



FOR OPTIONAL LOCKING:

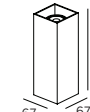
* Lock the cover by unscrewing the grub screw app. 3mm. Then the cover is stable.



DIMENSIONS



BOX MINI 1.0



BOX MINI 2.0

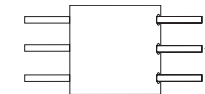
MOUNTING INSTRUCTION

- 1 Mount the base plate on the wall

POWER CONNECTION

- 2 Connect the power supply.

Interior: STANDARD version



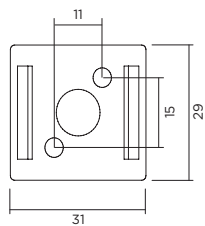
- 3 Mount inset on the back plate with side screws

- 4 Click cover over the inset

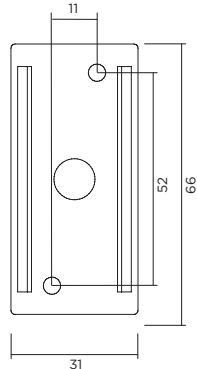
* For optional locking, unscrew the grub screw app. 3mm. The cover is now stable.

- 5 Mount the bulb.

BOX MINI 1.0



BOX MINI 2.0



WEVER & DUCRÉ
LIGHTING

www.weverducre.com

Wever & Ducre bvba Kwadestraat 153 bus 2.1 8800 Roeselare

INSTALLATION
INSTRUCTIONS