

# BOX

21-09-2015

## 2.0 LED

**LED** 2x8W | 220-240VAC | 50-60Hz | COB 2-step | incl. PS | phase-cut dim

CE IP20 960°C 0,3m 36° P

white texture	146264W
aluminium brushed	146264L
gold	146264G
bronze	146264Q
copper	146264P
black texture	146264B

### LIGHT COLOUR

2200K   >80CRI   2x315lm	1
2700K   >80CRI   2x480lm	2
3000K   >80CRI   2x480lm	4

## 2.0 PAR16

2xPAR16 max. 35W | GU10 | 220-240VAC | 50-60Hz

CE IP20 960°C 0,9m

white texture	146220W0
aluminium brushed	146220L0
gold	146220G0
bronze	146220Q0
copper	146220P0
black texture	146220B0

### OPTIONAL

for PAR16 lamps see our catalogue

### OPTIONAL

inner cover max. 10W

white texture	911011W1
gold	911011G1
black texture	911011B1

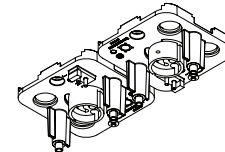
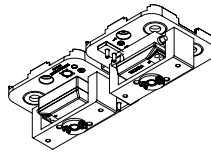
### 2.0 LED

### 2.0 PAR16

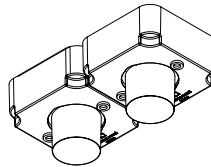
①



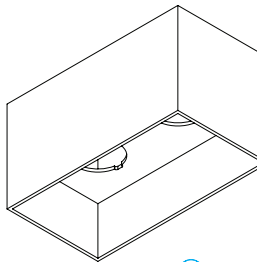
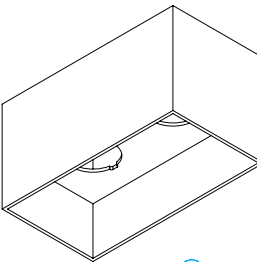
③



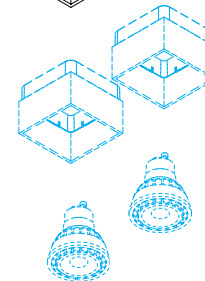
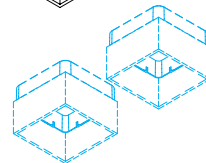
④



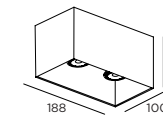
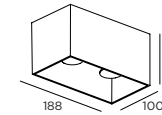
⑤



⑥



## DIMENSIONS



2.0 LED

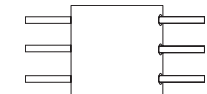
2.0 PAR16

## MOUNTING INSTRUCTION

- ① Attach both bases to each other by using the plate (plate can be found inside the cover box)

## POWER CONNECTION

- ② Connect to power  
Interior connection : standard version



- ③ Mount the bases on the ceiling

- ④ **FOR 2.0 LED**  
Attach the LED housing on the base

- ⑤ **FOR 2.0 LED**  
Attach the box cover to the LED housing  
**FOR 2.0 PAR16**  
Attach the box cover to the base

- ⑥ **OPTIONAL inner cover**  
put the inner cover in the outer cover and turn partially.  
In case of PAR16 with inner cover: max. 10W



WEVER & DUCRÉ  
LIGHTING

www.weverducre.com

INSTALLATION  
INSTRUCTIONS