

Fez

Una nuova #lightingstories
A new #lightingstories





Fez

Si racconta del vetro soffiato, da sempre carattere distintivo dell'azienda veneta produttrice di illuminazione decorativa. Si racconta la volontà di coniugare architettura e design di prodotto, vocazione di Marco Alessi, designer di Bassano del Grappa, laureato allo IUAV di Venezia e architetto di professione.

Si racconta un incontro a Fez, dove attraversando una porta di maioliche colorate si scopre un'anima millenaria di cultura, di conoscenza e di lavoro.

Ci sono numerosi dettagli da raccontare in questa nuova storia di luce (#lightingstories) di Prandina disegnata da Marco Alessi.

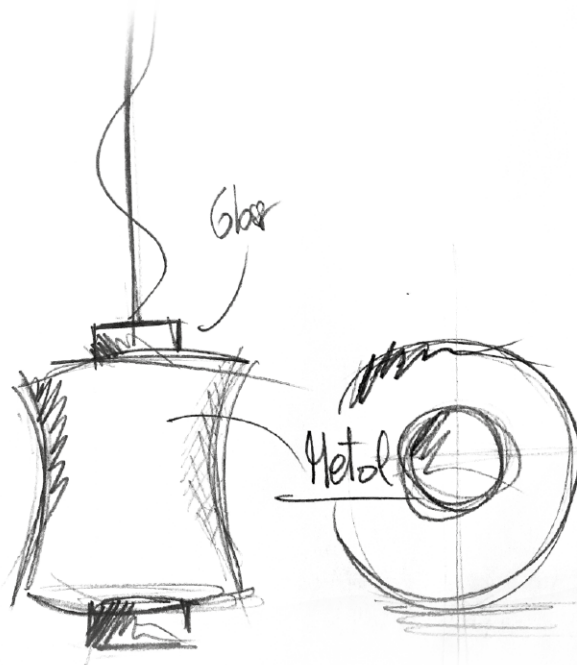
Un racconto che si sviluppa dall'esterno verso l'interno, da un diffusore in metallo impreziosito da finiture galvaniche ad un diffusore in cristallo soffiato. Un percorso verso l'anima del prodotto dettato dalla ricerca della luce.

It tells of blown glass, which has always been a distinctive feature of the Venetian company that produces decorative lighting. It tells of the desire to combine architecture and product design, the vocation of Marco Alessi, designer from Bassano del Grappa, graduate of the IUAV in Venice and an architect by profession.

It tells of a meeting in Fez, where through a gate of colored majolica you discover a millennial soul of culture, knowledge and work.

There are numerous details to tell in this new light story (#lightingstories) by Prandina designed by Marco Alessi. A story that develops from the outside to the inside, from a metal diffuser embellished with galvanic finishes to a blown crystal diffuser. A path towards the soul of the product dictated by the search for light.

Designer: **Marco Alessi**



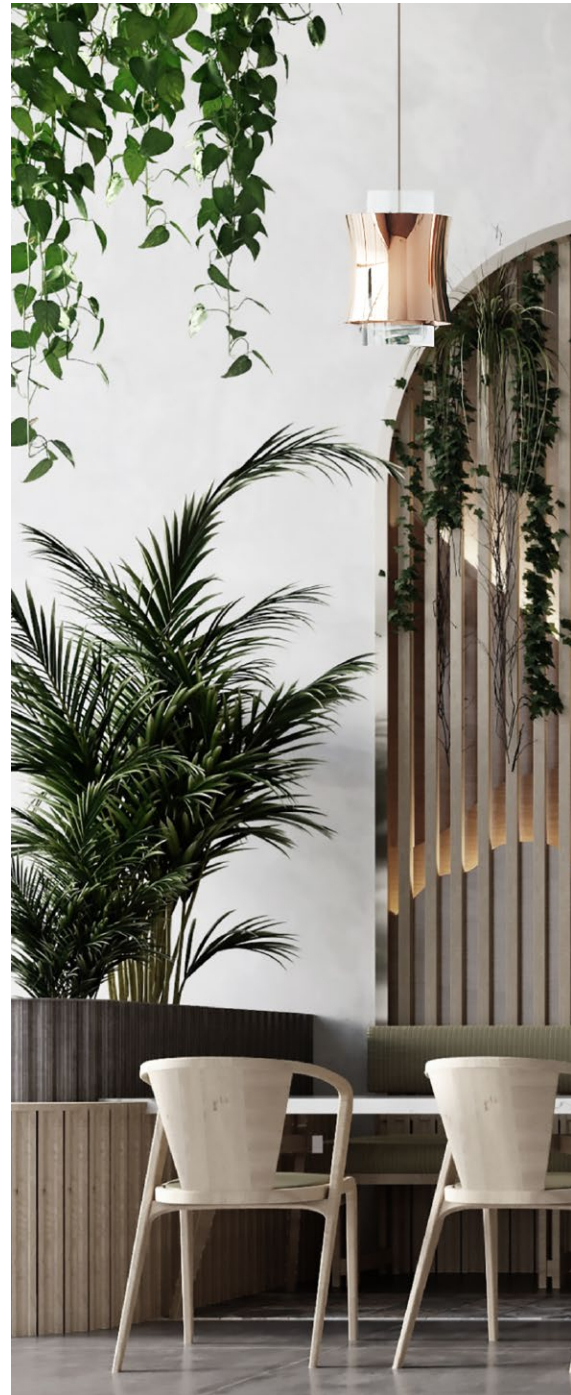
Fez S3

Diffusore in cristallo e diffusore esterno in metallo
Crystal diffuser and outer metal diffuser



Fez è una collezione dalle linee semplici e sinuose, dotata al contempo di una forte identità ed eleganza. Nasce dal rapporto tra due cilindri, uno trasparente, luminoso e rigido l'altro pieno, riflettente e sagomato per accogliere e distribuire la luce. Così i due cilindri, apparentemente contrapposti, si incontrano per unirsi. Fez si propone in differenti materiali e finiture superficiali che lasciano libero spazio all'interpretazione degli ambienti interni.

Fez is a collection with simple and sinuous lines, at the same time endowed with a strong identity and elegance. It arises from the relationship between two cylinders, one transparent, bright and rigid, the other solid, reflective and shaped to accommodate and distribute the light. Thus, the two apparently opposed cylinders meet to unite. Fez is offered in different materials and surface finishes that leave free space for the interpretation of the interiors.





Fez F3

Diffusore in cristallo e diffusore esterno in metallo

Finitura struttura: Cromo

Crystal diffuser and outer metal diffuser

Structure finish: Chrome



Fez è una collezione dalle linee semplici e sinuose, dotata al contempo di una forte identità ed eleganza. Nasce dal rapporto tra due cilindri, uno trasparente, luminoso e rigido l'altro pieno, riflettente e sagomato per accogliere e distribuire la luce. Così i due cilindri, apparentemente contrapposti, si incontrano per unirsi. Fez si propone in differenti materiali e finiture superficiali che lasciano libero spazio all'interpretazione degli ambienti interni.

Fez is a collection with simple and sinuous lines, at the same time endowed with a strong identity and elegance. It arises from the relationship between two cylinders, one transparent, bright and rigid, the other solid, reflective and shaped to accommodate and distribute the light. Thus, the two apparently opposed cylinders meet to unite. Fez is offered in different materials and surface finishes that leave free space for the interpretation of the interiors.



Fez T3

Diffusore in cristallo e diffusore esterno in finitura ottone lucido
Crystal diffuser and outer metal diffuser in glossy brass



**I materiali, le finiture e i dettagli
che fanno la differenza**

Ogni versione è disponibile in due dimensioni diverse (diametro del diffusore da 22,5 cm oppure da 30cm) e con cinque finiture standard (bianco opaco, nero lucido, sabbia opaco rame e ottone).

**Materials, finishes and details
that make the difference**

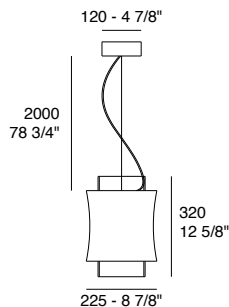
Each version is available in two different sizes (22.5cm or 30cm diffuser diameter) and with five standard finishes (matt white, glossy black, matt sand, copper and brass).



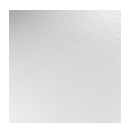




Fez | Dati tecnici | Technical data

**Fez S1**

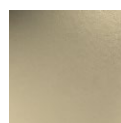
Crystal diffuser and outer metal diffuser - E27 Led light source - IP20

Glass finish: Transparent**Metal finish:** Matt white - Glossy black - Copper - Matt sand - Brass**Structure finish:** Chrome**Metal finish**

Matt white



Glossy black



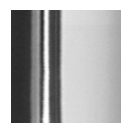
Matt sand



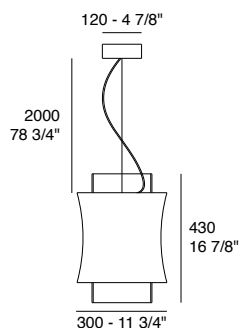
Copper



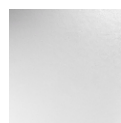
Brass

Structure finish

Chrome

**Fez S3**

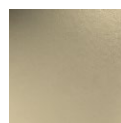
Crystal diffuser and outer metal diffuser - E27 Led light source - IP20

Glass finish: Transparent**Metal finish:** Matt white - Glossy black - Copper - Matt sand - Brass**Structure finish:** Chrome**Metal finish**

Matt white



Glossy black



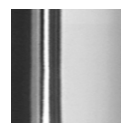
Matt sand



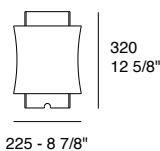
Copper



Brass

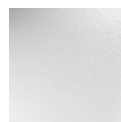
Structure finish

Chrome

**Fez T1**

Crystal diffuser and outer metal diffuser - E27 Led light source

Cable in black fabric (2000mm length) - IP20

Glass finish: Transparent**Metal finish:** Matt white - Glossy black - Copper - Matt sand - Brass**Structure finish:** Chrome**Metal finish**

Matt white



Glossy black



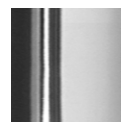
Matt sand



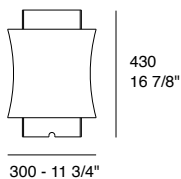
Copper



Brass

Structure finish

Chrome



Fez T3

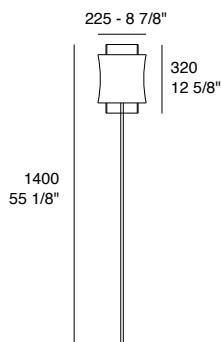
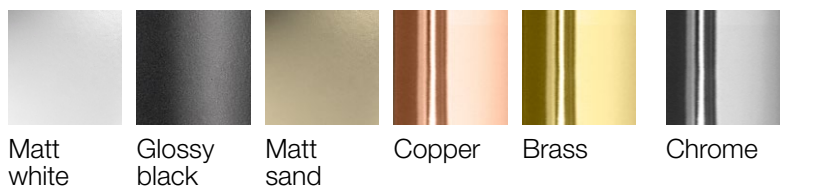
Crystal diffuser and outer metal diffuser - E27 Led light source
 Cable in black fabric (2000mm length) - IP20

Glass finish: Transparent

Metal finish: Matt white - Glossy black - Copper - Matt sand - Brass

Structure finish: Chrome

Metal finish



Fez F1

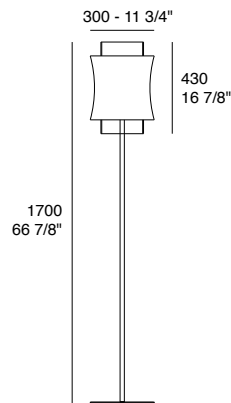
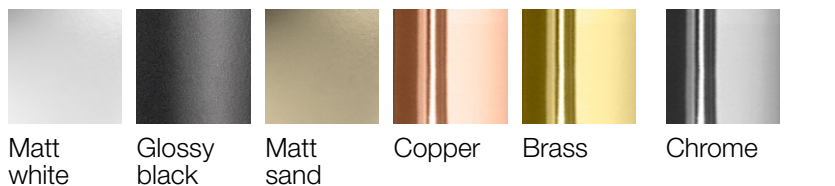
Crystal diffuser and outer metal diffuser - E27 Led light source
 Cable in black fabric (2000mm length) - IP20

Glass finish: Transparent

Metal finish: Matt white - Glossy black - Copper - Matt sand - Brass

Structure finish: Chrome

Metal finish



Fez F3

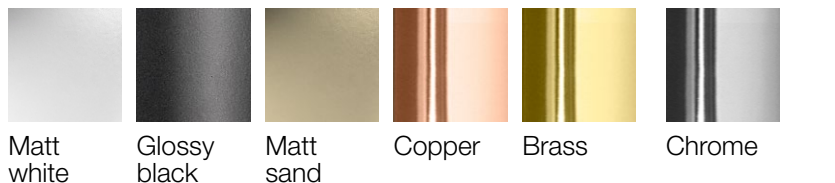
Crystal diffuser and outer metal diffuser - E27 Led light source
 Cable in black fabric (2000mm length) - IP20

Glass finish: Transparent

Metal finish: Matt white - Glossy black - Copper - Matt sand - Brass

Structure finish: Chrome

Metal finish





Prandina Srl

Via Rambolina, 29

36061 Bassano del Grappa (VI) Italy

Tel +39 0424 566338

Fax +39 0424 566106

Informazioni generali | General information:

info@prandina.it

Informazioni commerciali | Commercial information:

sales@prandina.it

Pre-press & Images:

Prandina Marketing Dept.

Printed in Italy

Ver: **01.01**





#lightingstories

prandina.it