

WETRO

1.0/2.0/3.0

07-Jun-2018

1.0

LED 11W | 220-240VAC | PCB 3-step | Phase-cut dim | incl.PS

CE IP20 0,3m

1800-2850K | >90CRI | 400lm

black smoked
copper plated

236189B9
236189P9

2.0

LED 11W | 220-240VAC | PCB 3-step | Phase-cut dim | incl.PS

CE IP20 0,3m

1800-2850K | >90CRI | 400lm

black smoked
copper plated

236289B9
236289P9

3.0

LED 11W | 220-240VAC | PCB 3-step | Phase-cut dim | incl.PS

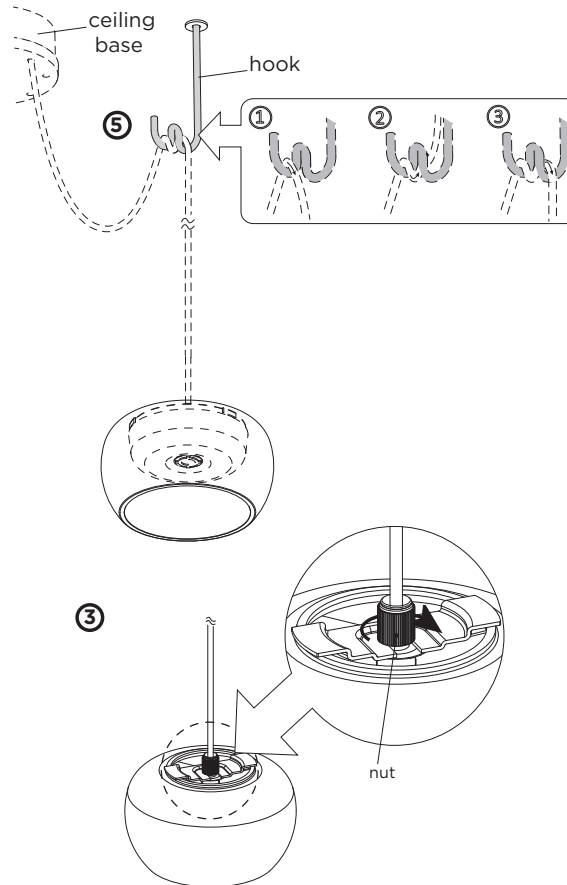
CE IP20 0,3m

1800-2850K | >90CRI | 400lm

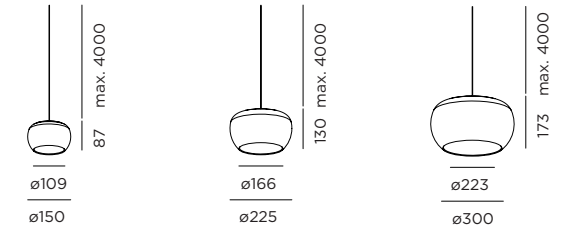
black smoked
copper plated

236389B9
236389P9

always use single ceiling base, see our catalogue
optional multi ceiling bases, see our catalogue



DIMENSIONS



WETRO 1.0

WETRO 2.0

WETRO 3.0

MOUNTING INSTRUCTION

- ① Pass the cable of the LED module through the hole at the bottom of the glass cover.
- ② Unscrew the nut and then insert the mounting bracket under the nut.
- ③ Screw tighten the nut.

④ POWER CONNECTION

Connect the power supply connection: STANDARD version



- ⑤ Attach the cable to the hook according to the prescribed steps.

The light source of the integrated LED is not replaceable;
When the light source reaches its end of life the whole luminaire shall be replaced.



Caution, risk of electric shock



WEVER & DUCRÉ
LIGHTING

www.weverducre.com

Wever & Ducre bvba Spinnerijstraat 99/21 8500 Kortrijk

INSTALLATION
INSTRUCTIONS