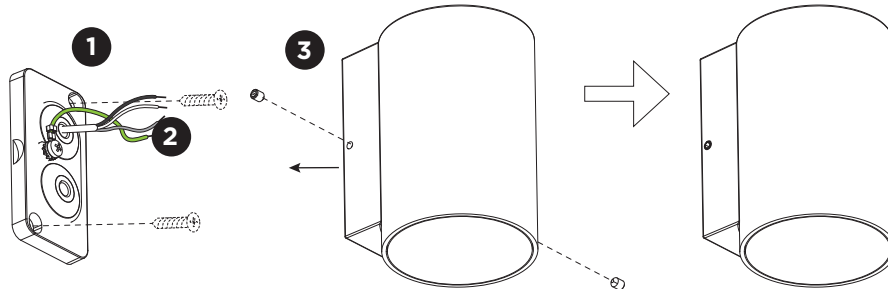
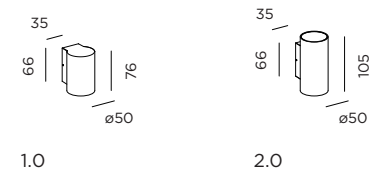


# TRAM

INSTALLATION INSTRUCTIONS | JANUARY 2021



## DIMENSIONS

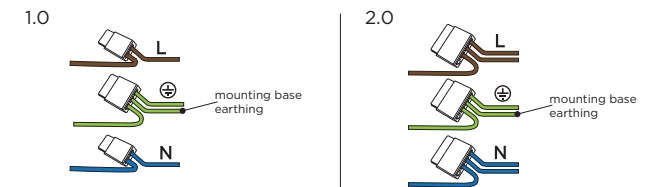


## MOUNTING INSTRUCTION

**1** Remove the mounting base from the luminaire by loosening the socket screws and mount it on the wall with screws.

**2** POWER CONNECTION

Connect to 220-240V.



Connect the earth cable.



**3** Fixate the luminaire on the base with the socket screws.

**Caution!**  
This is only applicable for model 1.0. Due to the minimalistic design of the luminaire the space inside is very limited. Wiring through is therefore not possible.

Mounting base:  
1.0 / 2.0

Only the grommet on the upper side can be used for entering the fixture. This is only applicable for model 1.0.

Please use a matching grommet based on the used 220-240V cable and the corresponding type in the overview table.

	A	B	C	D
CABLE				
TYPE	ROUND H05RN-F H07RN8-F H07RN-F	ROUND H05RN-F	ROUND	ROUND
OUTSIDE Ø	min 6.8mm max 8.9mm	min 5mm max 6.8mm	min 1.5mm max 2.6mm	min 1.5mm max 2.6mm
CONDUCTION SECTION	2or3x 0.75mm <sup>2</sup> 2or3x 1.0mm <sup>2</sup> 2or3x 1.5mm <sup>2</sup>	2or3x 0.75mm <sup>2</sup> 2x 1.0mm <sup>2</sup>	0.75mm <sup>2</sup> 1.5mm <sup>2</sup>	0.75mm <sup>2</sup> 1.5mm <sup>2</sup>