

OVERVIEW

The SR/F Top Box Rack Assembly (p/n 10-08214) was designed by Zero Motorcycles to augment the utility of your Zero SR/F. It offers integrated passenger grab rails and enables you to mount your own top box. The rack is manufactured using black powder-coated steel. Mounting holes are provided that are compatible with the GIVI Monolock adapter plate.

The SR/F Top Rack and SHAD Top Case Kit (p/n 10-08240) includes the top rack assembly, a SHAD SH39 top case, the SHAD adapter plate and all necessary hardware for installation.

Lockable, easily removable and aerodynamic, the SHAD SH39 top case offers convenient storage in a central location. Positioned behind the rider or possible passenger, the top case does not widen your motorcycle and sits in the rider's slipstream. With 39 liters of capacity and a maximum load of 8.8lbs (4kg), the top case is large enough to hold a helmet and many other goods simultaneously.

Install Time: Approx. 30 minutes (45 minutes with top case).



REQUIRED TOOLS AND PARTS

SPECIAL TOOLS REQUIRED

- None

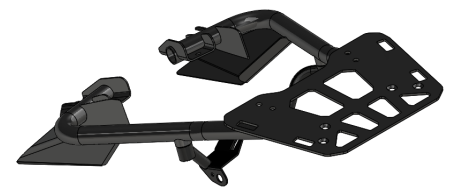
PARTS REQUIRED

SR/F Top Box Rack Assembly (p/n 10-08214) includes:

ITEM	PART NUMBER	QTY	ITEM NAME
1	20-01362	1	Cable Tie, 5.56 in., Black
2	26-08197	1	Top Rack Assembly
3	26-08346	1	Top Rack Turn Signal Support
4	90-08124	2	Hex Head Flange Bolt Star Drive M6x16 8.8
5	90-08164	4	Hex Head Flange Bolt Star Drive M6x20 10.9

SR/F Top Rack and SHAD Top Case Kit (p/n 10-08240) additionally includes:

ITEM	PART NUMBER	QTY	ITEM NAME
6	20-03900	0.3m	Foam Tape 0.5in Wide and 0.19in Thick
7	24-08481	1	Top Case With Adapter Plate, SHAD SH39
8	46-08246	1m	Weather Seal Black Rubber Double "D" 7.9MM X 9.1MM 1025
9	91-08164	4	Hex Head Flange Bolt Star Drive M6X20 10.9



Item 2. SR/F Top Rack Assembly

INSTALLATION INSTRUCTIONS

1. Confirm that you have all parts before starting the installation. If any parts are missing, please contact the Zero Motorcycles Aftersales Team with your order number and the missing items will be sent promptly.
2. Remove the passenger seat by unlocking with key and pulling up and forward. See Figure 1.
3. Using a T30 Torx bit socket and ratchet, remove both grab handles from the tail frame. See Figure 2.
4. Remove the two T25 bolts holding the turn signal bracket in place. Retain the bracket cover for use. Figure 3.
5. Detach rear turn signals from turn signal bracket using a 17mm wrench. See Figure 4.



Figure 1. Passenger Seat Removed



Figure 2. Passenger Seat Removed



Figure 3. Turn Signal Bracket Removal



Figure 4. Turn Signals Detached

INSTALLATION INSTRUCTIONS (CONT'D)

6. Remove the seat tray from the frame using a T25 Torx bit socket and ratchet. See Figure 5.
7. Carefully cut the zip tie securing the wires under the seat tray. See Figure 6.
8. Disconnect the left and right turn signals from the main harness by pulling apart the connectors. See Figure 7.
9. Attach the rear turn signals to the Top Rack Turn Signal Support (Item 3) using the existing hardware and a 17mm wrench. See Figure 7.
10. Route turn signal wires back through the tail frame and reconnect to the main harness. Left turn signal is white to white connection. Right turn signal is red to red connection. Connect black to black on properly marked sides. See Figure 8.

WARNING: ENSURE WIRES ARE NOT PINCHED AND THAT THERE IS NOT AN EXCESS OF WIRE AT THE TAIL LIGHT.



Figure 5. Seat Tray Removal



Figure 6. Cable Tie Location



Figure 7. Turn Signals Attached and Wires Routed

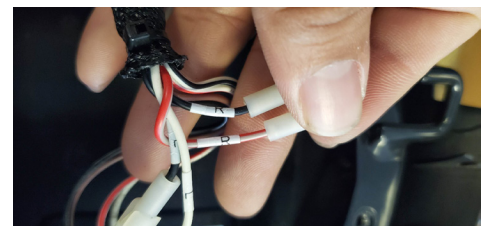


Figure 8. Turn Signal Wiring

INSTALLATION INSTRUCTIONS (CONT'D)

11. Attach the Top Rack Turn Signal Support (Item 3) under the tail of the motorcycle. Torque bolts to 3.5 ft-lbs (5 nm). Snap the retained cover into place. See Figure 9.
12. Secure wires inside tail frame using Cable Tie (Item 1). Do not over tighten. Turn on motorcycle and test that turn signals are operating normally before proceeding. See Figure 10.
13. Install the seat tray and secure rear end with existing bolts. Torque to 3.5 ft-lbs (5 nm). See Figure 11.
14. Attach the Top Rack Assembly (Item 2) to the tail frame using the supplied Hex Head Flange Bolt Star Drive M6x20 (Item 5) and a T30 Torx bit socket and ratchet. Hand tighten only at this time. See Figure 12.



Figure 9. Turn Signal Support Attachment



Figure 10. Secure Wires Inside Tail Frame

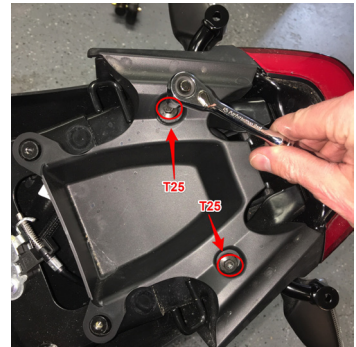


Figure 11. Seat Tray Reinstalled

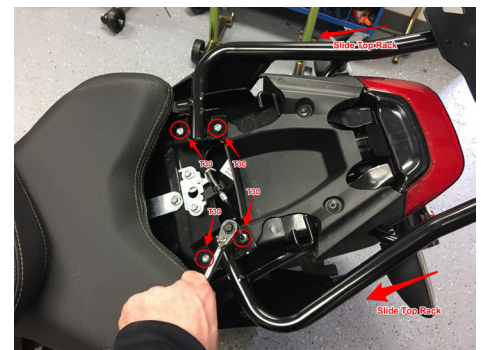


Figure 12. Top Rack Assembly Secured

INSTALLATION INSTRUCTIONS (CONT'D)

15. Secure the Top Rack Turn Signal Support (Item 3) to the Top Rack Assembly (Item 2) using the supplied Hex Head Flange Bolt Star Drive M6x16 (Item 4). Torque to 10 ft-lbs (13.5 nm). See Figure 13.
16. Torque Top Rack Assembly bolts securing it to the tail frame to 10 ft-lbs (13.5 nm).
17. Replace passenger seat.

Continue only if also installing the Top Case With Adapter Plate, SHAD SH39 (Item 7).

18. Mount the SHAD adapter plate using the lock nuts, washers and brackets supplied with the SHAD Top Case (Item 7) and the four Hex Head Flange Bolt Star Drive M6X20 10.9 (Item 9). Bolts will be positioned pointing upward. Tighten only to hand tight. See Figures 14 and 15.
19. Center the SHAD adapter plate on the Top Rack Assembly metal top plate. Then, fully tighten the lock nuts to secure the adapter plate.



Figure 13. Secure Top Rack Turn Signal Support



Figure 14. Mount The SHAD Adapter Plate (below)



Figure 15. Mount The SHAD Adapter Plate (above)



Figure 16. Left Cover Inserted

INSTALLATION INSTRUCTIONS (CONT'D)

20. Insert covers into SHAD adapter plate. See Figure 16.
21. To ensure a more silent ride and limit any rattling of the top case, two 0.15 meter foam tape strips (Item 6) can be installed along the cover plates. See Figure 17.
22. The Weather Seal Black Rubber Double “D” 7.9MM X 9.1MM 1025 (Item 7) should be installed along the edge of the SHAD SH39 top case. See Figure 18.
23. Snap the SHAD SH39 Top Case into place per the instructions provided by SHAD to complete the installation.



Figure 17. Foam Strips For A More Silent Ride



Figure 18. Weather Seal Installed On Case