

## Overview

Zero Motorcycles designed the black powder-coated, steel side case rack to bolt directly in to the frame of your 2015 and newer Zero SR, Zero S, Zero DSR or Zero DS. This kit includes the necessary hardware to mount GIVI Monokey Side Cases and is identical to the rack that is included when you purchase the Zero Side Cases by GIVI and Rack Kit. This kit can be used in conjunction with the Zero Top Box by GIVI and Rack Kit.



## Usage Instructions

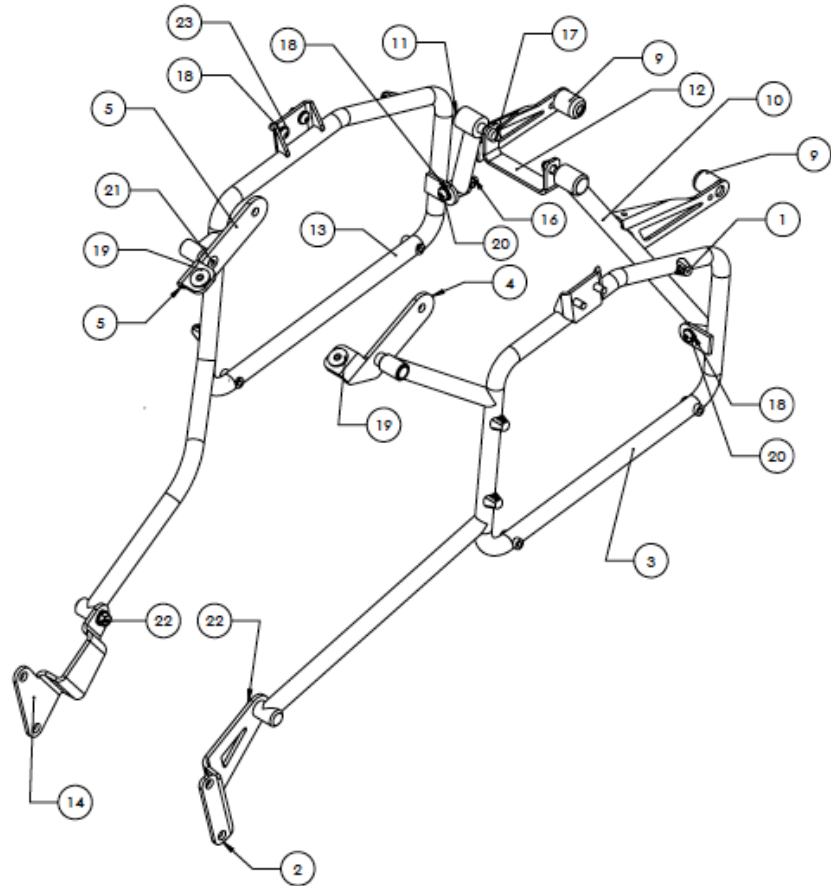
Zero Motorcycles recommends the GIVI E21 Monokey Side Cases for use with this rack kit. As a reference for the weight the Side Case Rack Kit can support, Zero Motorcycles has tested the GIVI E21 Side Cases with the full recommended load, which is 11 pounds. However, the shape of a side case, the load configuration and other factors can negatively affect the total weight that the Side Case Rack Kit can support. Thus, the motorcycle owner and rider should approach the mounting of a new side cases with caution.

**WARNING: ZERO MOTORCYCLES HAS NOT TESTED THE SIDE CASE RACK KIT WITH ALL AVAILABLE SIDE CASES AND IS NOT RESPONSIBLE FOR DAMAGE OR ACCIDENTS RESULTING FROM THEIR USE. RIDERS SHOULD APPROACH THE USE OF NEW SIDE CASES WITH CAUTION.**

### Installation Instructions

#### TOOLS REQUIRED:

- Allen Key - 3 mm
- Allen Key - 4 mm
- Allen Key - 5 mm
- Combination Wrench - 10mm
- Combination Wrench - 13mm
- Combination Wrench - 17mm
- Flush Cut Snips
- Jeweler's Screwdriver (x2)
- Needle Nose Pliers
- T45 Torx Wrench



#### INCLUDED PARTS (SHOWN ABOVE):

ITEM NO.	PART NUMBER	QTY	PART NAME
1	10-05949	6	Side Case Bumper
2	26-08190	1	Side Case Footpeg Bracket - left
3	10-05964	1	Side Case Tubular Weldment - left
4	10-05966	1	Side Case Seat Bracket - left
5	10-05967	1	Side Case Seat Bracket - right
9	20-03146	2	Turn Signal Hex Nut Cap, black plastic
10	21-07530	1	Side Case Rear Support - left
11	21-07531	1	Side Case Rear Support - right
12	26-08039	1	Side Case Rear Support Crossmember
13	26-08062	1	Side Case Tubular Weldment - right (Showa compatible)
14	26-08093	1	Side Case Footpeg Bracket - right (Showa compatible)
16		2	Nylock nut M6, black (included in the GIVI Side Case Mounting Hardware Junction Kit)
17	90-07265	2	Hex socket cap head screw M6 x 20 (Loctite pre-applied)
18	90-02103	8	Standard washer #6
19	90-02105	2	Fender washer #6
20	90-02126	2	Hex socket button head screw M6 x 40
21	90-07281	2	Hex socket button head screw M6 x 12 (Loctite pre-applied)
22	90-07286	2	Hex head flange bolt M6 x 16 (Loctite pre-applied)
23	90-07369	4	Hex socket button head screw M6 x 14 (Loctite pre-applied)

### INCLUDED PARTS (NOT SHOWN):

PART NUMBER	QTY	PART NAME
10-06425	2	GIVI Side Case Mounting Hardware Junction Kit (E115F) - includes pyramid clamp, mushroom spacers with retention bolts and nylock nuts
20-00539	4	Cable tie, 4 in. black (two extra if needed)
20-01362	1	Cable tie, 6 in. black
90-07273	2	Hex socket button head screw M6 x 16 (used to attach side case seat brackets to frame)

### INSTALLATION:

1. Remove the seat bolts using a T45 Torx wrench and retain for re-use. Remove seat.



Figure 1. Seat bolt location

2. Using flush cut snips, cut the zip ties holding the signal wires under the left rear of the seat area. Also cut the zip tie that secures the foam wrapped around the ferrite and remove foam. Retain foam for re-use.

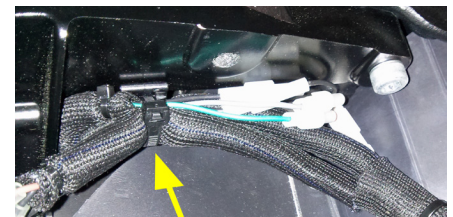


Figure 2. Cut and remove zip tie



Figure 3. Rear ferrite wrapped in foam

3. Open the ferrite by carefully inserting two jeweler's screwdrivers in the holes shown in Figure 4. Squeeze them together and the ferrite should easily pull open.

NOTE: If you are doing a large number of installations, the ferrite manufacturer does make a special tool that can be obtained online. Contact Zero Motorcycles Customer Service for more information.

4. Disconnect turn signal wires and carefully pull them out through the tail. Make a mental note to remember how the wires connect (or take a picture).



Figure 4. Holes for removal of ferrite

- 5.** Remove turn signals from tail pod using 17mm combination wrench and set aside. Retain signals and all hardware.

NOTE: Zero Motorcycles has ground down a 17mm combination wrench to make it thinner and easier to remove the nuts. If necessary, you can use needle nose pliers to loosen the nut, but be careful not to mar it by doing this.



Figure 5. Remove turn signal hex nuts

- 6.** Using the 3mm allen key, remove the three black screws on each side of the motorcycle that hold the right and left battery fairings in place. Set fairings safely aside and retain screws for reuse. They are removed to provide easier access to the passenger foot peg bracket bolts.



Figure 6. Remove battery fairings

- 7.** Remove passenger foot peg bracket bolts and then install the Side Case Footpeg Brackets (left and right) with a 13mm combination wrench. A ratcheting wrench makes this task go more quickly. The bolts are best accessed from the front where the battery fairings were removed. Tighten passenger foot peg bracket bolts to 25 ft-lbs.

NOTE: Be sure not to crimp or compress any of the rear brake line when reattaching the right brackets nearest the rear master cylinder.



Figure 7. Right side access to footpeg bracket

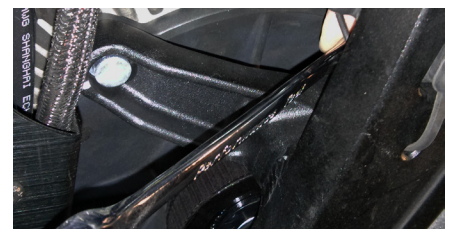


Figure 8. Left side access to footpeg bracket

- 8.** Install Side Case Seat Brackets (left and right) on top of frame under rear of seat with M6x16 screws and the Fender Washer #6 using a 4 mm allen key. Torque to 6 ft-lbs. Ensure that seat bolts holes are properly aligned before tightening.

If a Top Rack Kit is already installed, then the Side Case Seat Brackets are not required and the Side Rack Kit will attach directly to the Top Rack Kit.

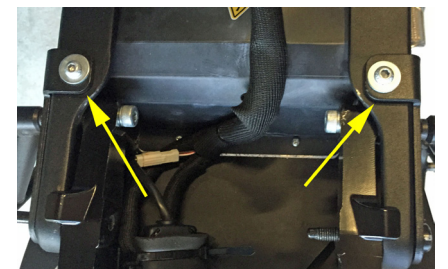


Figure 9. Side case seat brackets attached

- 9.** Install Side Case Tubular Weldments (left and right). First, attach the weldments to the seat brackets using a M6 x 12 hex screw with a 4mm allen key, then attach to the footpeg brackets using M6 x 16 flange bolts with a 100mm combination wrench. Do not tighten yet.

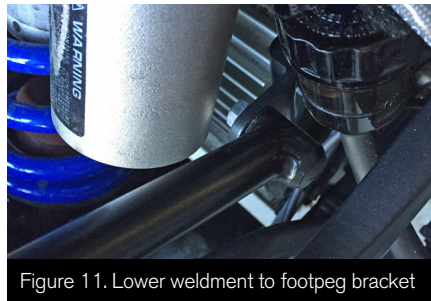


Figure 11. Lower weldment to footpeg bracket

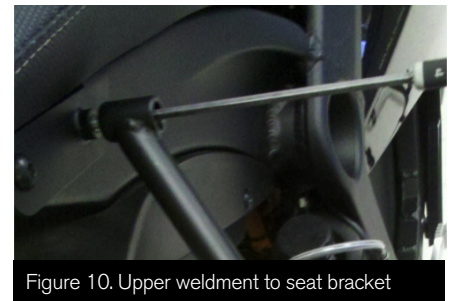


Figure 10. Upper weldment to seat bracket

- 10.** Install Side Case Rear Supports (left and right). First, attach the upper portion of the supports using a M6 x 20 screw with a 5mm allen key to the tail pod at the location where the rear turn signals were removed. The Side Case Rear Crossmember is placed on the inside of the rear turn signal holes.

Then, attach the lower rear supports to the tubular weldments with a M6 x 40 screw, a Standard Washer #6 on each side of the weldment and a Nylock Nut M6, black. Reminder: the nylock nuts are found in the GIVI Side Case Mounting Hardware Junction Kit.

With the side case brackets, weldments and supports now connected, tighten all screws and bolts to 8 ft-lbs to secure the side case rack assemblies on each side of the motorcycle.



Figure 12. Right rear support attached



Figure 14. Lower rear supports to weldment



Figure 13. Crossmember placement from below

- 11.** Install rear turn signals on Side Case Rear Supports using a 17mm combination wrench with the original hardware. Slide the Turn Signal Hex Nut Caps over the wires and the nuts.



Figure 15. Rear turn signal attached

- 12.** Route rear turn signal wires back up through the underside of the license plate frame under the seat. The image to the right shows this with and without the rear crossmember in place (ignore nuts in picture without the crossmember as they were used only to take picture).



Figure 16. With crossmember



Figure 17. Without crossmember

- 13.** Reconnect signal wires to the bike wiring harness. Double check that the turn signals are connected correctly before continuing.

Clamp the ferrite back over the wires and wrap the foam around the ferrite. Secure back into place using the 6in. cable tie as shown in Figure 18.



Figure 18. Signal wires with ferrite

- 14.** Secure rear signal wires to rear supports at hole provided using 4in. cable ties.



Figure 19. Signal wire secured to rear support

- 15.** On each of the side racks, install GIVI latch and locating spools using hardware provided in the GIVI Side Case Mounting Hardware Junction Kit (E115F), the M6 x 14 screws and #6 standard washers.

Install three Side Case Bumpers into remaining holes. The jeweler's screwdriver can be used to carefully press the bumper nubs into the holes.



Figure 20. Spools, latch and bumpers locations



Figure 21. Locating spools



Figure 23. Latch with screws and washers



Figure 24. Bumper pressed into place

- 16.** Reinstall seat using original seat bolts and the T45 Torx wrench. Before securing the seat bolts ensure that the tabs on the seat's front properly slide inside frame below tank. Torque the seat bolts to 10 ft-lbs.



Figure 25. Tab on front of seat



Figure 26. Rear view of finished installation



Figure 27. Side view of finished installation