

**A CHRISTMAS STORY**  
**TALKING CLAPPER**  
WITH NIGHT LIGHT



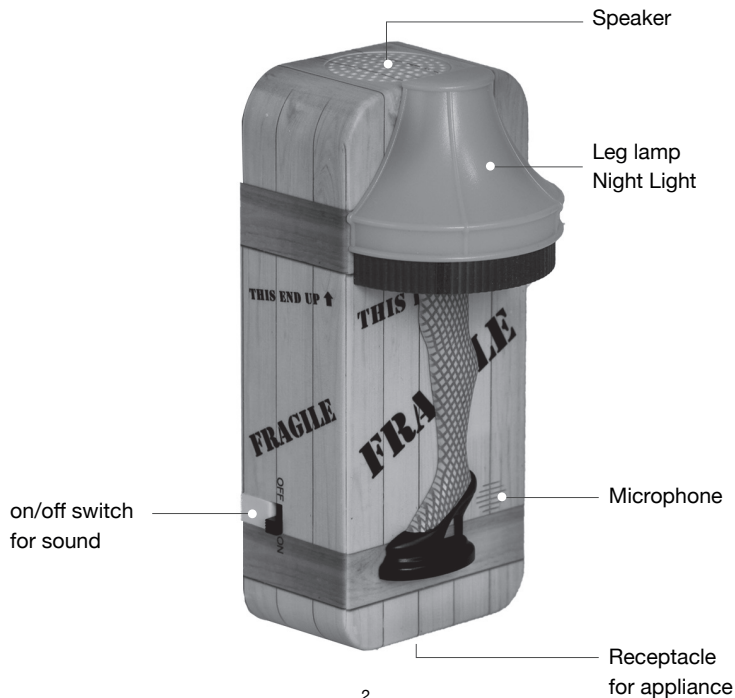
"Fra-Gee-Lay...  
Must be Italian"

"It's a Major Award"

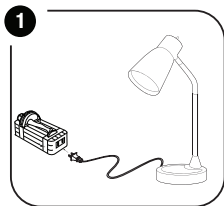
**CLAP ON! CLAP OFF! SOUND ACTIVATED ON/OFF SWITCH**

**Congratulations!** You are now the owner of A Christmas Story™ Talking Clapper® with Night Light. Features of this product include:

- Activate appliance with 2 claps and/or
- Activate night light with 3 claps
- Hear movie quotes when night light is activated



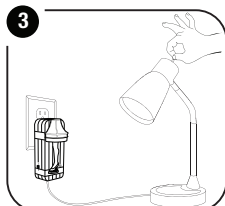
# TURNING ON/OFF LAMP, STEREO, FAN, ETC. (by CLAPPING 2X )



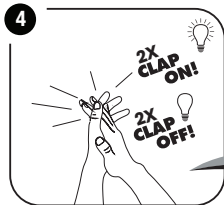
Plug an appliance (lamp, stereo, fan, etc.) into the bottom of Clapper®.



Plug Clapper into the wall socket.



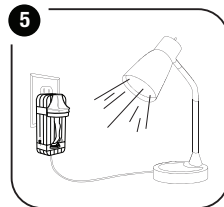
Manually turn your appliance on.



Turn appliance on or off by clapping two times with 1/2 second pause between each clap.

**You don't have to clap very hard. The clapping sequence is more important than how loudly you clap.**

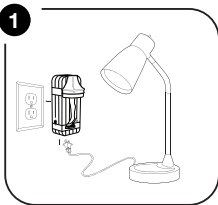
**Clap (pause) Clap (pause) (pause) (pause)**  
*where each pause is 1/2 second long*



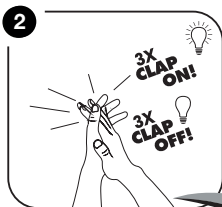
And now your appliance is controlled by The Clapper®.

**CAUTION:** Maximum wattage of appliance can not exceed 200 watts

# TURNING ON/OFF NIGHT LIGHT (by CLAPPING 3X )



Plug Clapper® into the wall socket.

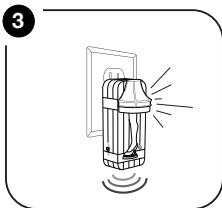


Turn night light on or off by clapping three times with 1/2 second pause between each clap.

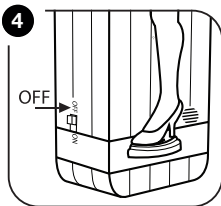
You don't have to clap very hard. The clapping sequence is more important than how loudly you clap.

**Clap (pause)**  
**Clap (pause)**  
**Clap (pause)**

*where each  
pause is 1/2  
second long*



Hear movie quotes as night light is turned on or off.



To turn off movie quote sounds, slide switch on side of Clapper to the OFF position.

# TROUBLESHOOTING

**Here are some tips to allow your Clapper® to function properly.**

1. For operating an appliance, verify all instruction steps:
  - Make sure Clapper is plugged fully into wall socket.
  - Make sure appliance is plugged securely into Clapper.
  - Make sure the appliance is functional and is turned on
  - Confirm clapping is following this sequence:  
**clap (pause) clap (pause) (pause) (pause) or clap (pause) clap (pause) clap (pause)**  
*where each pause is 1/2 second long.*Note the last two pauses are necessary.
2. The Clapper should not be blocked by large furniture or drapes. These items may hinder the clapper from “hearing” your claps.
3. Avoid rooms with a lot of echos. The Clapper will detect echos as potential claps.
4. Familiarize yourself with how your Clapper works. This exercise will help you understand the clap detection range in your room.
  - Standing about 3 feet away clap to activate your appliance.
  - Move back a few feet and try again.
  - Continue until you are too far away from The Clapper to activate your appliance.
5. The Clapper will work well with Christmas lights, and table and floor lights using incandescent, flourescent and LED bulbs.
6. You may use 3 Way bulbs when lamp is set to highest brightness setting.
7. Using with televisions and radios, the Clapper turns on and off your appliance similar to plugging in and unplugging your appliance from the wall outlet. Many televisions must remain plugged in to maintain settings and for the remote control to work. Similarly some radios require them to be plugged in to operate. For these reasons, The Clapper may not operate as desired with some televisions and radios.

# IMPORTANT SAFETY NOTES

- a. **CAUTION:** Risk of Electric Shock and Fire Hazard.
- b. This is not a toy and is not intended for use by children.
- c. For adult use only.
- d. Match wide blade of plug to wide slot, fully insert.  
For safe use, plug only into exposed wall outlets where a device is ventilated and cannot contact bed covering or other material.
- e. Do not use with extension cords.
- f. Do not use the Clapper® with any electrical heating appliances such as toasters, hair dryers, coffee pots, etc.
- g. Do not use the Clapper with any appliance that can create a fire hazard with prolonged use.
- h. Do not use with medical equipment.
- i. Do not use with inductive loads.
- j. The maximum wattage for an appliance is 200 watts
- k. Indoor dry location use only

## WARNING

A Christmas Story™ Talking Clapper requires standard 120 VAC power. Do not plug the Clapper into any non-standard power source as this may lead to electric shock or fire.

*For example, do not use the Clapper on a dimming circuit.*

## CAUTION

The user that changes or modifications not expressly approved by the party responsible for compliance could void the user's authority to operate the equipment.

## **NOTE**

This equipment has been tested and found to comply with the limits for a class B digital device, pursuant to part 15 of the FCC Rules. These limits are designed to provide reasonable protection against harmful interference in a residential installation. This equipment generates, uses and can radiate radio frequency energy and, if not installed and used in accordance with the instructions, may cause harmful interference to radio communications. However, there is no guarantee that interference will not occur in a particular installation. If this equipment does cause harmful interference to radio or television reception, which can be determined by turning the equipment off and on, the user is encouraged to try to correct the interference by one or more of the following measures:

- Reorient or relocate the receiving antenna.
- Increase the separation between the equipment and receiver.
- Connect the equipment into an outlet on a circuit different from that to which the receiver is connected.
- Consult the dealer or an experienced radio/TV technician for help.

## THIRTY ( 30 ) DAY LIMITED TIME WARRANTY

Joseph Enterprises offers a thirty (30) day limited warranty to the original purchaser of A Christmas Story™ Talking Clapper®. The warranty covers defects in workmanship and materials only. It does not apply to product failures resulting from accidental damage, neglect, misuse or any other cause not associated with defects in workmanship or materials. Should the Clapper prove to be defective within the thirty (30) days from the date of purchase, the product will either be repaired or replaced, at Joseph Enterprises' discretion, free of charge. To receive warranty service, return the product insured, along with proof of purchase date and postage pre-paid to the address below. Purchasers are advised to carefully read and follow the operating and safety instructions contained in this book and included on the back of the product.

This particular warranty shall disclaim Joseph Enterprises' obligation and sole responsibility respecting the product and all other warranties, implied or expressed, including implied warranties of fitness for a specific purpose. Joseph Enterprises does not authorize retailers and others to make any warranty concerning the product. Some states do not permit time limitations on an implied warranty, or limitation or exclusion of incidental or consequential damages, so the above limitations may not pertain to you.

This warranty grants you specific legal rights and you may also have additional rights that vary from state to state.



# WE WELCOME YOUR FEEDBACK

**Please feel free to write us at:**

**JOSEPH ENTERPRISES, INC.**  
customerservice@jeiusa.com

**Customer Service**  
800-557-5856  
[www.chia.com](http://www.chia.com)



**JOSEPH ENTERPRISES, INC.**

San Francisco, California 94111