

A close-up photograph of a person wearing blue medical scrubs. A gold-colored stethoscope is tucked into the front pocket of the pants. On the belt, there is a circular badge with the MDF Instruments logo. The background is a bright, outdoor setting with a blurred building.

MDF
instruments®

ACTIVISTS
FOR GLOBAL WELLNESS

WHY MDF?

MDF®

Unlike a lot of companies, our purpose is not driven by wealth but by wellness. We believe that to be a better US we need a better YOU and in order to do that you need the best diagnostic equipment possible. That's where MDF® starts.

PRECISION INSTRUMENTS

We've invested decades into our research and engineering refinements to create patented medical instruments that are precise, durable and versatile - all designed for you. Many medical device companies farm out the production of their devices, but MDF® owns and operates its own manufacturing. From the raw steel, titanium, and rubber, we craft each component to the highest standards every time.

FOR YOU. FOR LIFE.

Each instrument is tested in our facility again and again to ensure the highest quality possible. With our Lifetime Warranty and Free-Parts-for-Life program we can guarantee your MDF® devices will stay in peak condition for years to come. This is our way of supporting you and backing YOU, For Life!

CRAFTING WELLNESS

The premium quality and support of our instruments is just the first step to our goal of world wellness. Through our Crafting Wellness® program, MDF® actively seeks out partnerships with medical missions and practitioners in need so that they can be equipped wherever the world needs them most. Because of you we've been able to provide more than 45,000 stethoscopes, hammers and blood pressure monitors to teams in the field. With your continued help we'll do so much more.

PATENTS

With an insistence on quality and a constant focus on innovation, we strive to deliver first-class instruments that lead the industry in accuracy, safety, and cutting-edge design. Look for these patented features on our products:

- Attachment Clip
- ErgonoMax™ headset
- A2X-configuration tubing
- Pulse Time® with timepiece
- ProCardial® C3 chestpiece
- Acoustic Pyramid Chamber
- SafetyLock™ eartip adaptors
- SoundTight™ GLS Acoustic Valve
- Telescoping Babinski 2.0® Hammer
- LUMiNix® Professional Diagnostic Penlight
- Taylor 2.0® Hammer co-designed with Dr. Douglas Lanska
- Lightweight ProCardial® ERA® chestpiece with dual output valve



WHY MDF?

Crafting Wellness®

S I N C E 1 9 7 1

CAN SOMETHING AS SIMPLE AS A STETHOSCOPE lead to a larger impact in medicine? At MDF® Instruments, we believe in the power of a stethoscope and we seek to provide easier access to quality diagnostic equipment, which in turn, will allow practitioners to accurately diagnose basic point of care issues, especially in developing areas of the world. We call it our “Crafting Wellness® Initiative”. To date, we have empowered over 200 teams of medical professionals in over 90 different countries and we have served over 1 million people throughout the world.

MDF® Education Partnerships incorporate the Crafting Wellness® Initiative, as we intend to widen outreach by supporting the medical missions of America’s medical, nursing, and allied health schools with free medical equipment. Part of the proceeds from this partnership enable MDF® to donate free diagnostic equipment not only to other missions throughout the world, but also to the missions led by your school’s community.

We do not hide away from the fact that commerce is essential to our mission, and we hope to empower you to join our team in “Crafting Wellness”. It is our intention, by design, to use this opportunity as a way to partner in a manner that leads to more possibility for both MDF® and your school. As the only diagnostic company with an initiative that supports global, domestic, community, and rural health, we feel it is our responsibility to find ways to equip doctors, nurses, and all practitioners with what we feel is the best medical diagnostic equipment.

By donating free medical equipment to missions led by your community, and by providing practitioners the support with the industry’s only lifetime warranty, we can all keep serving our communities, which will lead to better health.

WELCOME

DESIGNED FOR YOU

Customization To The Next Level



METALOGY

The MDF® Metalogy Collection has created an unprecedented ability to customize our products by offering an increasing number of metal finishes for our Titanium, Stainless Steel and Aluminum products. This along with our Mprints® Line allows us to tailor our stethoscopes to our customers needs and create a one-of-a-kind stethoscope that is Uniquely You.

TITANIUM FINISH OPTIONS



Original



Rose Gold



Metalika



Gold



Cyprium



BlackOut



Kaleidoscope

STAINLESS STEEL FINISH OPTIONS



BlackOut



Perla Noire



Rose Gold



Gold



Original



WhiteOut

ALUMINUM FINISH OPTIONS



BlackOut



Aqua



Rose Gold



Gold



Red



Original

MPRINTS

The MDF® Mprints Collection furthers our customization capabilities by allowing us to personalize the stethoscope tubing with almost any look. Our patented system provides a distinct pattern to the tubing that will hold up to the rigors of even the most turbulent medical environments. Choose from over 100 of our current designs or let us help you create an all new design that is uniquely yours.



Mermaid



Marble



American Hero



Galaxy

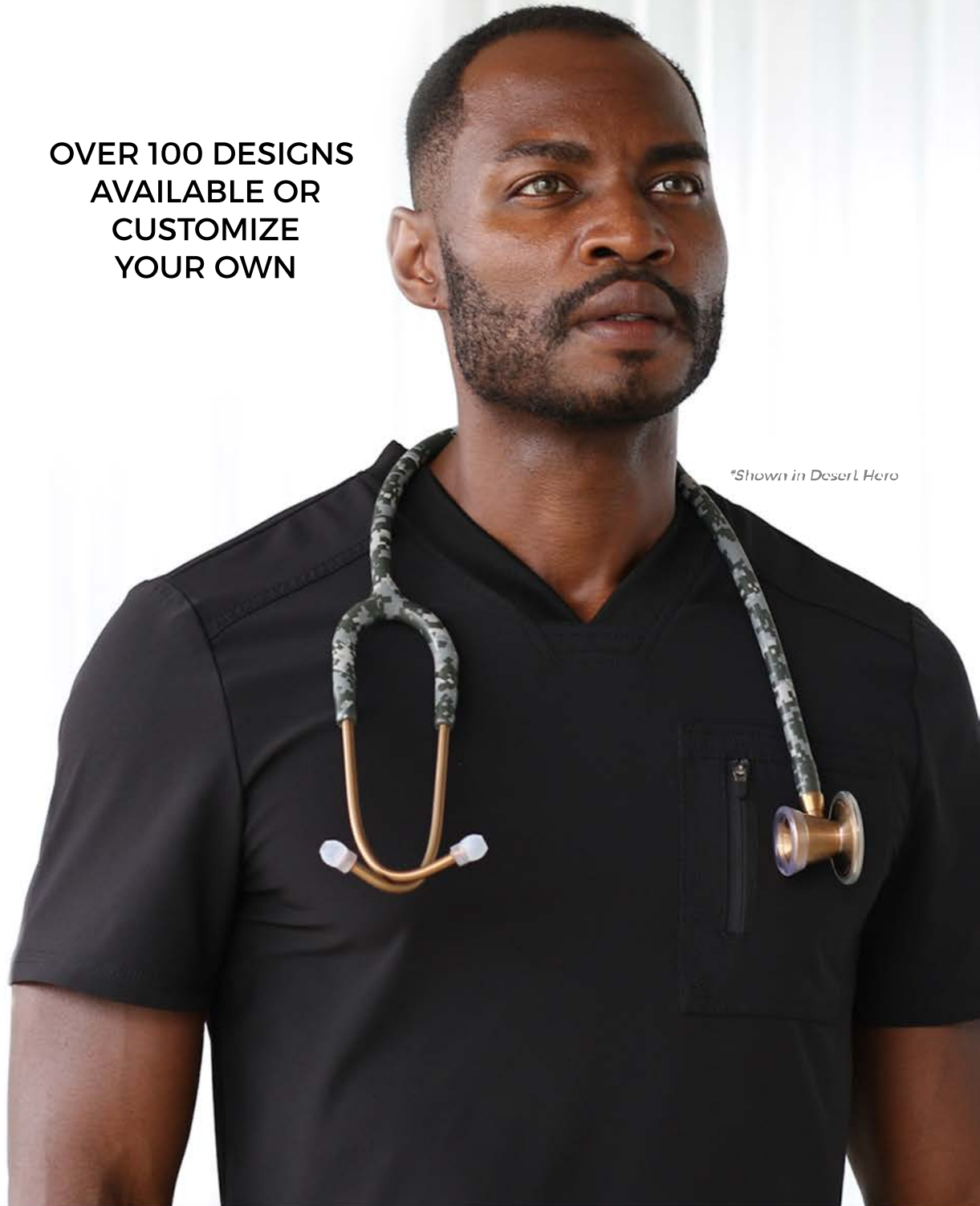


Apollo



Poseidon

**OVER 100 DESIGNS
AVAILABLE OR
CUSTOMIZE
YOUR OWN**



**Shown in Desert Hero*

STETHOSCOPES

Engineering Excellence



PROCARDIAL® TITANIUM Lightweight Cardiology

Constructed from lightweight titanium, the MDF® ProCardial® Titanium Stethoscope delivers accurate auscultation of heart, lung, and Korotkoff sounds with acoustic integrity and clarity. Compared to its 9.6oz stainless steel counterpart, our titanium ProCardial® Titanium weighs in at only 4.9oz. Imagine what that feels like over a 12 hour shift. With its extra-deep, cone-shaped bell and ultrasensitive diaphragm, this cardiology stethoscope detects the entire frequency range required by cardiologists.

(Includes Free-Parts-For-Life and a Lifetime Warranty)



MDF797TBO11



MDF797T11



MDF797T04



MDF797TMT29



MDF797TK21



MDF797TKL08



MDF797TCP21

Over 80 Designs
Available

- Titanium conducts the same pristine sound as stainless steel but is 45% lighter (4.9oz).
- Patented design converts Adult chestpieces to Pediatric (DDT) or Pediatric and Infant (CCT).
- True Bell focuses on low frequency sounds (20Hz-100Hz).
- True Diaphragm focuses on high frequency sounds (100Hz-1000Hz).
- Patented SoundTight™ Glide-Lock-System™ (GLS), minimizes sound loss from the indexing mechanism.
- Deeper cone-shaped bell amasses specific low frequency heart sounds.
- C34 tubing has 34 channels etched inside the tube to direct clear and precise sound waves.
- Our flexible, latex-free tubing is thicker and longer than others to block out external noises, and provides a safer distance between patient and practitioner.
- Patented ErgonoMax™ headset is pre-angled and tension adjustable, allowing for a tailored fit.
- The dual-leaf spring adds a second layer of durability to prevent the headset breaking.
- Acoustic Pyramid Chamber™ (APC) prevents sound blockage from the tube kinking.
- Patent pending STenT™, keeps the spring from blocking the opening of the APC.
- Patented SafetyLock™ prevents accidental puncturing of the eardrum from loose eartips.
- 3 sizes of ComfortSeal™ eartips included (small, medium and large).



ADULT



PEDIATRIC



INFANT



**Shown with optional Pediatric & Infant Clip*

PROCARDIAL® TITANIUM Lightweight Cardiology

Dual-Leaf Spring

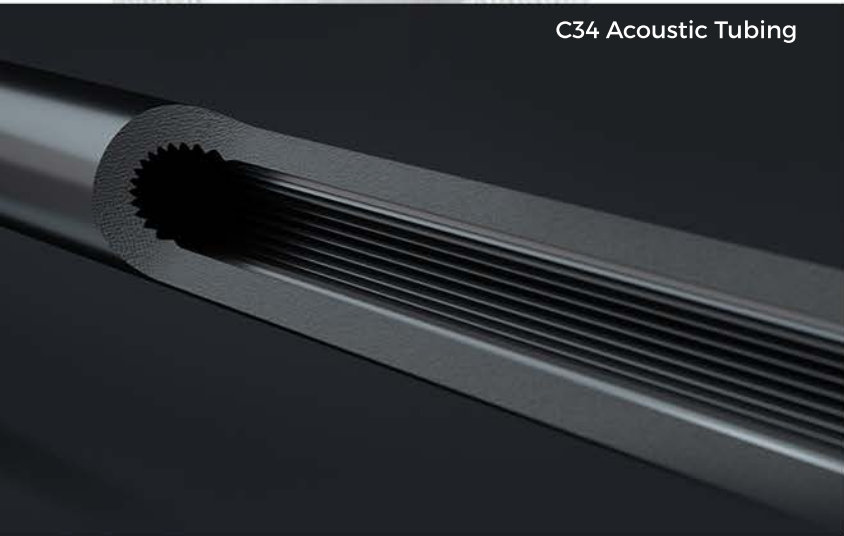
STEnT™

Acoustic Pyramid Chamber™



C34 Acoustic Tubing

SoundTight™ Glide-Lock System



STETHOSCOPES

ST-2

PROCARDIAL® STAINLESS STEEL Traditional Cardiology

The patented MDF® ProCardial® Stethoscope stands alone among all cardiology stethoscopes. With its optional conversion attachments, this stethoscope can be easily transformed into nine different configurations, including a complete adult, pediatric, or infant cardiology stethoscope. The ProCardial® is a versatile diagnostic instrument, with unmatched performance, durability, and craftsmanship.

(Includes Free-Parts-For-Life and a Lifetime Warranty)



MDF797BO



MDF79711



MDF79704



MDF79721



MDF79717



MDF797PN29



MDF797K11

14 Designs
Available

- Premium Stainless Steel maximizes sound conduction for acoustic clarity.
- Patented design converts Adult chestpieces to Pediatric (DD) or Pediatric and Infant (CC).
- True Bell focuses on low frequency sounds (20Hz-100Hz).
- True Diaphragm focuses on high frequency sounds (100Hz-1000Hz).
- Patented ErgonoMax™ headset is pre-angled and tension adjustable, allowing for a tailored fit.
- Our flexible, latex-free tubing is thicker and longer than others to block out external noises, and provides a safer distance between patient and practitioner.
- Deeper cone-shaped bell amasses specific low frequency heart sounds.
- C34 tubing has 34 channels etched inside the tube to direct clear and precise sound waves.
- The dual-leaf spring adds a second layer of durability to prevent the headset breaking.
- Acoustic Pyramid Chamber™ (APC) prevents sound blockage from the tube kinking.
- Patent pending STEnT™, keeps the spring from blocking the opening of the APC.
- Patented SafetyLock™ prevents accidental puncturing of the eardrum from loose eartips.
- 3 sizes of ComfortSeal™ eartips included (small, medium and large).



ADULT



PEDIATRIC



INFANT



**Shown with optional Pediatric Clip*

MD ONE® EPOCH® TITANIUM Premium Lightweight

There has always been a trade-off between sound and weight...until now. At nearly half the weight of stainless steel, our MD One® Epoch® Titanium is our first non-cardiology stethoscope to produce uncompromised sound quality in a lightweight model. This, along with its convertible adult and pediatric bell and diaphragm make it a truly versatile and professional-grade listening device.

(Includes Free-Parts-For-Life and a Lifetime Warranty)



MDF777TBO11



MDF777T11



MDF777TMT11



MDF777T01



MDF777TK11



MDF777TVCCP



MDF777TTHKL

Over 40 Designs
Available

- Titanium conducts the same pristine sound as stainless steel but is 45% lighter (4.9oz).
- Patented design converts Adult chestpieces to Pediatric (DT).
- True Bell focuses on low frequency sounds (20Hz-100Hz).
- True Diaphragm focuses on high frequency sounds (100Hz-1000Hz).
- Patented SoundTight™ Glide-Lock-System™ (GLS), minimizes sound loss from the indexing mechanism.
- Our flexible, latex-free tubing is thicker and longer than others to block out external noises, and provide a safer distance between patient and practitioner.
- Patented ErgonoMax™ headset is pre-angled and tension adjustable, allowing for a tailored fit.
- The dual-leaf spring adds a second layer of durability to prevent the headset breaking.
- Acoustic Pyramid Chamber™ (APC) prevents sound blockage from the tube kinking.
- Patented SafetyLock™ prevents accidental puncturing of the eardrum from loose eartips.
- 3 sizes of ComfortSeal™ eartips included (small, medium and large).



ADULT



PEDIATRIC BELL



PEDIATRIC DIAPHRAGM



**Shown with optional Pediatric Clip*

MD ONE® EPOCH® TITANIUM

Premium Lightweight

Dual-Leaf Spring

Acoustic Pyramid Chamber™

Convertible Chestpiece



SoundTight™ Glide-Lock System



ErgonoMax™ Headset



STETHOSCOPES

ST-5

MD ONE® STAINLESS STEEL All-Purpose Excellence

The MDF® MD One® is a premier diagnostic instrument, known for its performance, durability and aesthetics. Constructed from acoustically superior stainless steel, MD One® delivers accurate auscultation of heart, lung and Korotkoff sounds with acoustics integrity and clarity, while its ergonomic design ensures comfort over longer shifts.

(Includes Free-Parts-For-Life and a Lifetime Warranty)



MDF777BO



MDF777PN11



MDF77711



MDF77704



MDF777K11



MDF77708



MDF777RG29

Over 30 Designs
Available

- Premium Stainless Steel maximizes sound conduction for acoustic clarity.
- Available in Adult, Pediatric or Infant sizes.
- True Bell focuses on low frequency sounds (20Hz-100Hz).
- True Diaphragm focuses on high frequency sounds (100Hz-1000Hz).
- Our flexible, latex-free tubing is thicker and longer than others to block out external noises, and provide a safer distance between patient and practitioner.
- Patented ErgonoMax™ headset is pre-angled and tension adjustable, allowing for a tailored fit.
- The dual-leaf spring adds a second layer of durability to prevent the headset breaking.
- Acoustic Pyramid Chamber™ (APC) prevents sound blockage from the tube kinking.
- Patented SafetyLock™ prevents accidental puncturing of the eardrum from loose eartips.
- 3 sizes of ComfortSeal™ eartips included (small, medium and large).



ADULT



PEDIATRIC



INFANT



**Shown in Perla Noire metal finish*

ACOUSTICA® ALUMINUM Affordable Accuracy

The MDF® Acoustica® stethoscope is our lightweight, economy model that delivers accurate auscultation of heart, lung and Korotkoff sounds with acoustics integrity and clarity, while its ergonomic design ensures comfort over longer shifts.

(Includes Free-Parts-For-Life and a Lifetime Warranty)



MDF777BO



MDF777PN11



MDF77711



MDF77704



MDF777K11



MDF77708



MDF777RG29

Over 20 Designs
Available

- Fashioned from lightweight aluminum.
- True Bell focuses on low frequency sounds (20Hz-100Hz).
- True Diaphragm focuses on high frequency sounds (100Hz-1000Hz).
- Our flexible, latex-free tubing is thicker and longer than others to block out external noises, and provide a safer distance between patient and practitioner.
- Patented ErgonoMax™ headset is pre-angled and tension adjustable, allowing for a tailored fit.
- The dual-leaf spring adds a second layer of durability to prevent the headset breaking.
- Acoustic Pyramid Chamber™ (APC) prevents sound blockage from the tube kinking.
- Patented SafetyLock™ prevents accidental puncturing of the eardrum from loose eartips.
- 3 sizes of ComfortSeal™ eartips included (small, medium and large).



**Shown in Aqua metal finish*

PROCARDIAL® ERA® Modernized Sprague Rappaport Design

The MDF® ProCardial® ERA® is the very first stethoscope of its kind. We promise, you've never seen a stethoscope like this and you won't believe how light it is. In addition to the redesigned lightweight headset and patented sound-sealing A2X tubing, it features a convertible chestpiece with 3 real bells and 3 separate diaphragms in adult, pediatric, and infant modes.



MDF797XBO11



MDF797XBO08

- Includes Clip containing Pediatric and Infant Bells and Diaphragms.
- Features our patented SoundTight™ Glide-Lock System™.
- True Bell & True Diaphragm design.
- EgronoMax® Headset with crack-resistant Dual-Leaf Spring.
- Each diaphragm includes non-chill ring.
- Patented SafetyLock™ eartip attachment
- 3 sizes of eartips included. (Small, Medium, Large)



Attachment Clip



Adult



Pediatric



Infant

SPRAGUE RAPPAPORT X Modernized Sprague Rappaport Design

The MDF® Deluxe Sprague Rappaport X Stethoscope with X-configuration dual-lumen acoustic tubing is an advanced Sprague Rappaport design used by healthcare professionals. Similar to the MDF® Sprague Rappaport, it is five stethoscopes in one for **adult**, **pediatric**, and **infant** patients and is traditionally trusted to detect faint heart sounds and murmurs. The innovative, patented X-configuration tubing eliminates the rubbing of traditional Sprague Rappaport dual tubing that can cause acoustic interference.



MDF767XB01



MDF767X04

- Includes accessory kit with Pediatric and Infant assemblies.
- Lightweight aluminum construction.
- True Bell & True Diaphragm design.
- EgronoMax® Headset with crack-resistant Dual-Leaf Spring.
- Each diaphragm includes non-chill ring.
- Patented SafetyLock™ eartip attachment
- 3 sizes of eartips included. (Small, Medium, Large)



Adult



Pediatric



Infant

SPRAGUE RAPPAPORT Classic Sprague Rappaport Design

The MDF® Deluxe Sprague Rappaport X Stethoscope with X-configuration dual-lumen acoustic tubing is an advanced Sprague Rappaport design used by healthcare professionals. Similar to the MDF® Sprague Rappaport, it is five stethoscopes in one for **adult**, **pediatric**, and **infant** patients and is traditionally trusted to detect faint heart sounds and murmurs. The innovative, patented X-configuration tubing eliminates the rubbing of traditional Sprague Rappaport dual tubing that can cause acoustic interference.



MDF767B011



MDF767K11

- Includes accessory kit with Pediatric and Infant assemblies.
- Lightweight aluminum construction.
- True Bell & True Diaphragm design.
- Dual non-stick acoustic tubing.
- Each diaphragm includes non-chill ring.
- Patented SafetyLock™ eartip attachment
- 3 sizes of eartips included. (Small, Medium, Large)



Adult



Pediatric



Infant

SPHYGMOMANOMETERS

Impeccable Accuracy





MDF8481C

ICONICA® Industrial Grade, Palm-Type

The iconic benchmark in its class. This is the original Bosch + Sohn™ masterpiece that has been often imitated but never equaled. A collaboration between industry pioneers—Bosch + Sohn™ and MDF® Instruments—brings you this very recognizable and respected sphygmomanometer. The gauge of the Iconica® is made entirely in Germany, backed by a tradition of craftsmanship spanning over half a century. From the workshop in Junigen, Germany to the palm of your hand, it is a work of art brought to you exclusively by MDF® Instruments.

- Certified 300mmHg manometer retains accuracy of +/- 3mmHg without a pin stop.
- Stress tested over 3,000 times and calibrated at six pressure points (0, 60, 120, 180, 240, 300).
- Bosch + Sohn™ 100% German-made sphygmomanometer.
- Features Shock Protection Technology certified by the German Institute of Metrology.
- Patented 2-in-1 tube technology eliminates jumping dial during inflation.
- Lure Lock quick release valve makes switching cuffs easy.
- Non-stick screw-type valve delivers a precise deflation control rate.
- Ergonomic grip panel design enables precise single-hand air inflation and release.
- Anti-slip inflation bulb is constructed of crack-resistant, non-sticking, high-density hypoallergenic latex-free PVC.
- Intake filter at the base of the bulb keeps out unwanted particles and debris.
- High density, non-stick, non-cracking inflation cuff bladder is easily removed to quickly clean.
- High-Molecular polymer cuff is abrasion and moisture resistant.
- Cuff includes artery indicator label and index range.
- Adult and Pediatric size cuffs included. *(Thigh, Large Adult, Infant, Newborn sizes available)*



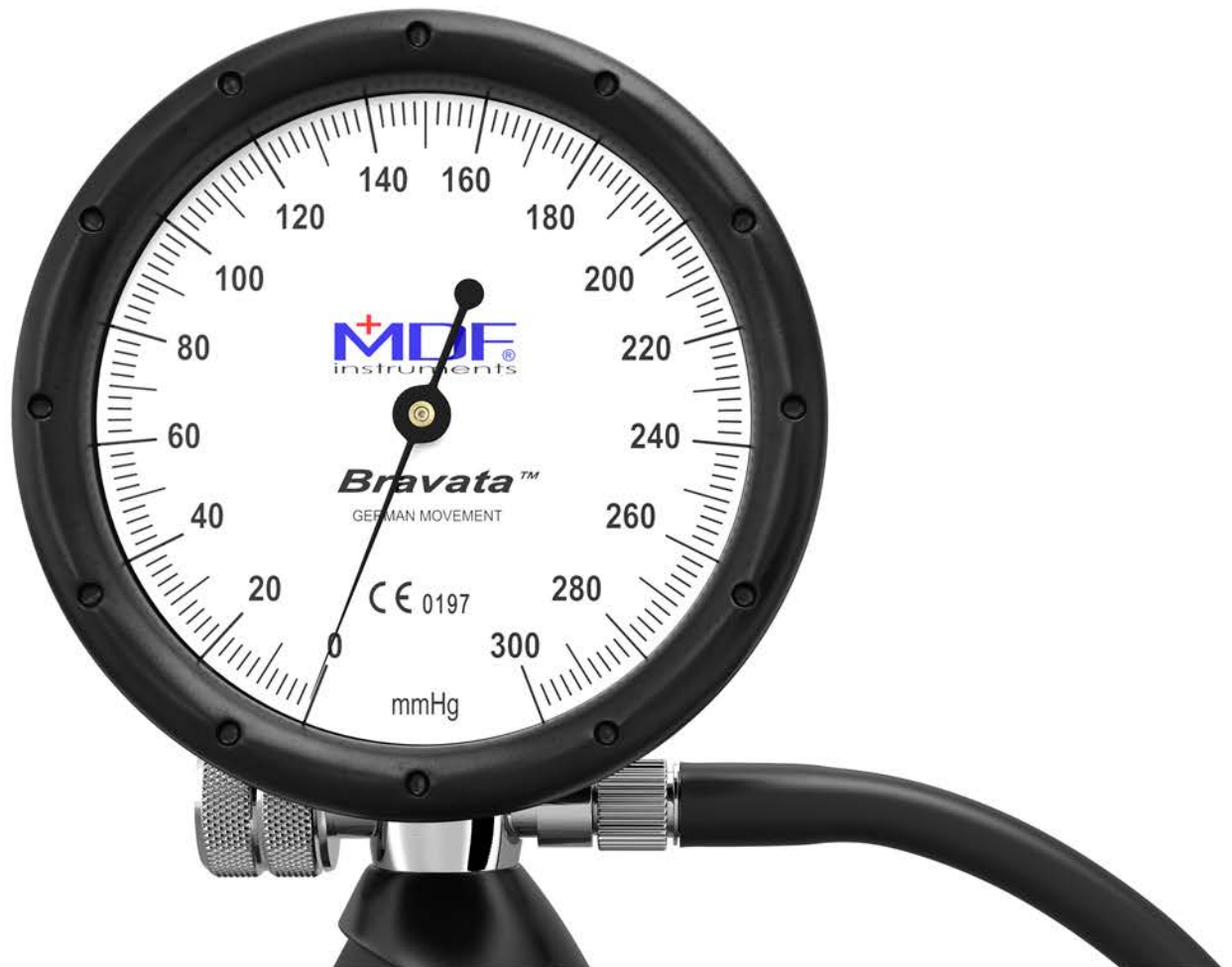


MDF848XPD

BRAVATA® **German Engineered, Palm-Type**

The MDF® Bravata® Palm Aneroid Sphygmomanometer is the teamwork of two renowned masters, MDF® Instruments and Bachmaier & Klemmer™. The high-precision German-made movement and MDF's time-honored handcraftsmanship and meticulous engineering make this device like no other. Calibrated five times and stress-tested over 3,000 times before it leaves our factory floor, it is one of the most durable, accurate, and dependable blood pressure measurement devices available today, meeting all the highest technical standards in the world.

- Certified 300mmHg manometer retains accuracy of +/- 3mmHg without a pin stop.
- Stress tested over 3,000 times and calibrated at six pressure points (0, 60, 120, 180, 240, 300).
- German-made high-precision movement by Bachmaier & Klemmer™.
- Extra-large gauge to ensure easy and accurate readings.
- Lightweight housing and bezel are constructed of high-impact absorbing thermoplastic.
- Screw-type valve facilitates a precise air release rate.
- Ergonomic grip panel design enables precise single-hand air inflation and release.
- Anti-slip inflation bulb is constructed of crack-resistant, non-sticking, high-density hypoallergenic latex-free PVC.
- Intake filter at the base of the bulb keeps out unwanted particles and debris.
- High density, non-stick, non-cracking inflation cuff bladder is easily removed to quickly clean.
- High-Molecular polymer cuff is abrasion and moisture resistant.
- Cuff includes artery indicator label and index range.
- Adult and Pediatric size cuffs included. *(Thigh, Large Adult, Infant, Newborn sizes available)*





MDF848AR11

AIRIUS® Lightweight, Palm-Type

Lighter than your smartphone, you'll forget it's in your pocket. The gauge of the Airius® palm-type sphygmomanometer is entirely German-made, and is the original creation of Bosch + Sohn™ that became the most popular sphyg in Europe. A collaboration between industry pioneers Bosch + Sohn™ and MDF® Instruments, we bring the Airius® sphygmomanometer from the workshop in Junigen, Germany to the palm of your hand.

- Certified 300mmHg manometer retains accuracy of +/- 3mmHg without a pin stop.
- Stress tested over 3,000 times and calibrated at six pressure points (0, 60, 120, 180, 240, 300).
- Bosch + Sohn™ 100% German-made sphygmomanometer.
- Features Shock Protection Technology certified by the German Institute of Metrology.
- Patented 2-in-1 tube technology eliminates jumping dial during inflation.
- Screw-type valve facilitates a precise air release rate.
- Ergonomic grip panel design enables precise single-hand air inflation and release.
- Anti-slip inflation bulb is constructed of crack-resistant, non-sticking, high-density hypoallergenic latex-free PVC.
- Intake filter at the base of the bulb keeps out unwanted particles and debris.
- High density, non-stick, non-cracking inflation cuff bladder is easily removed to quickly clean.
- High-Molecular polymer cuff is abrasion and moisture resistant.
- Cuff includes artery indicator label and index range.
- Adult size cuff included. (*Thigh, Large Adult, Pediatric, Infant, Newborn sizes available*)



CALIBRA® PRO Large Gauge, Pocket Aneroid

With its 20% larger, easy-to-read gauge, and additional shock guard, this pocket aneroid instrument offers the portability, accuracy, and trouble-free operation ideal for busy health practitioners. With its high contrast dial the Calibra® Pro is also ideal in low light environments.



MDF808B11

- Certified 300mmHg manometer retains accuracy of +/- 3mmHg without a pin stop.
- Stress tested over 3,000 times and calibrated at six pressure points (0, 60, 120, 180, 240, 300).
- 20% Larger Gauge than traditional pocket aneroid instruments.
- The Calibra® Pro is designed with a double bellow inside the gauge for durability and accuracy.
- Hygienic ShockGuard™ protects the internal components from accidental damage.
- Screw-type valve facilitates a precise air release rate.
- Attachment clip secures the chestpiece while busy holding the gauge and operating the bulb.
- Anti-slip inflation bulb is constructed of crack-resistant, non-sticking, high-density hypoallergenic latex-free PVC.
- Intake filter at the base of the bulb keeps out unwanted particles and debris.
- High density, non-stick, non-cracking inflation cuff bladder is easily removed to quickly clean.
- High-Molecular polymer cuff is abrasion and moisture resistant.
- Cuff includes artery indicator label and index range.
- Adult size cuff included. (*Thigh, Large Adult, Pediatric, Infant, Newborn sizes available*)

20% Larger Gauge



CALIBRA® Traditional Pocket Aneroid

With its 20% larger, easy-to-read gauge, and additional shock guard, this pocket aneroid instrument offers the portability, accuracy, and trouble-free operation ideal for busy health practitioners. With its high contrast dial the Calibra® Pro is also ideal in low light environments.



MDF808M11



MDF808M04



MDF808M08



- Certified 300mmHg manometer retains accuracy of +/- 3mmHg without a pin stop.
- Stress tested over 3,000 times and calibrated at six pressure points (0, 60, 120, 180, 240, 300).
- 20% Larger Gauge than traditional pocket aneroid instruments.
- The Calibra® Pro is designed with a double bellow inside the gauge for durability and accuracy.
- Hygienic ShockGuard™ protects the internal components from accidental damage.
- Screw-type valve facilitates a precise air release rate.
- Attachment clip secures the chestpiece while busy holding the gauge and operating the bulb.
- Anti-slip inflation bulb is constructed of crack-resistant, non-sticking, high-density hypoallergenic latex-free PVC.
- Intake filter at the base of the bulb keeps out unwanted particles and debris.
- High density, non-stick, non-cracking inflation cuff bladder is easily removed to quickly clean.
- High-Molecular polymer cuff is abrasion and moisture resistant.
- Cuff includes artery indicator label and index range.
- Adult size cuff included. (*Thigh, Large Adult, Pediatric, Infant, Newborn sizes available*)



WARRANTY

All MDF® Sphygmomanometers come with a 3 year warranty and Lifetime calibration. For half a century, our master craftsmen have meticulously created exquisite medical instruments for healthcare professionals, and we will continue this fanatical discipline for lifetimes to come. We will be here.



REFLEX HAMMERS

Forged With Experience



TRÖMNER Weighted Balance

This popular reflex hammer was invented by Ernst L.O. Trömner, MD, a director of the Neurological Hospital at St. Georg and professor at the University of Hamburg. The MDF® stainless-steel Trömner Hammer is a versatile 3-in-1 dual mallet-type reflex hammer with a third testing device at the base of the handle. It's handcrafted and designed for eliciting myotatic and cutaneous responses in adult and pediatric patients.



MDF555BO



MDF55511



MDF55502



MDF555RC

- Balance-weighted stainless steel head for increased control and greater patient comfort.
- Large and small mallets, constructed of soft silicone for precise percussions.
- Rounded handle tip comfortably elicits superficial and cutaneous responses.
- Ideal for Adult, Pediatric and Infant patients.



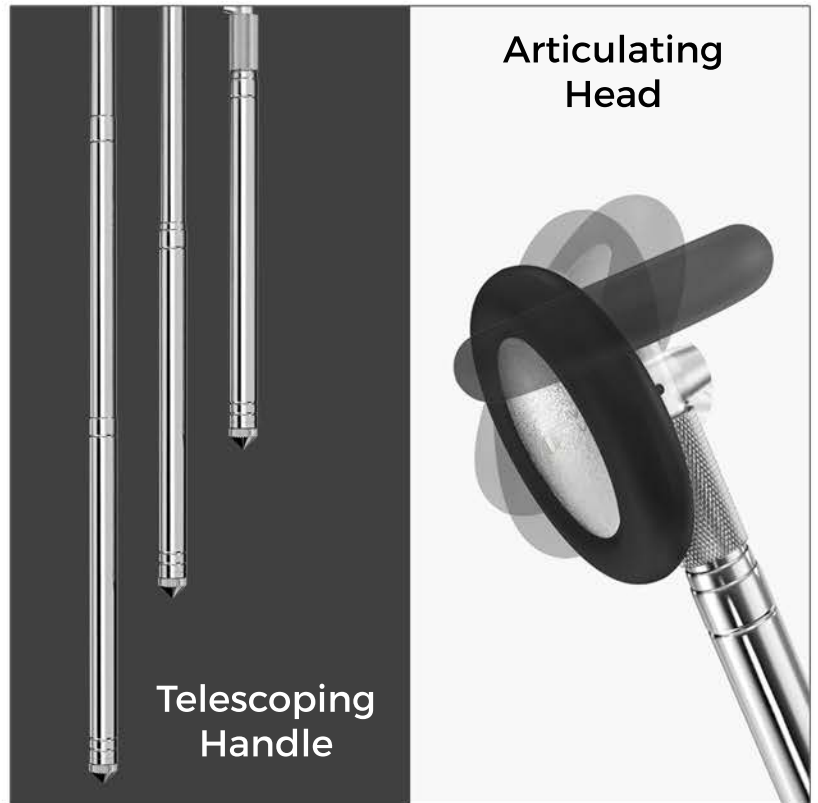
BABINSKI TELESCOPING 2.0® Patented Engineering

MDF® re-invented the original Babinski hammer by adding a patented Spring-loaded Locking System (SLS) to securely lock the articulating head in place while in use. MDF® also added a robust telescoping handle that is wider and thicker to withstand the force of repeated striking. This patented and newly designed hammer enables practitioners to strike with greater precision and less effort while also providing increased patient comfort. The MDF® Babinski Telescoping 2.0® Hammer is meticulously handcrafted to exceed our extreme quality standards. (US Pat No: US D711,533S)



MDF535XT11

- Articulating head is a chrome-plated brass disc grooved to house the silicone bumper.
- Weighted and balanced for controlled striking.
- SLS system quickly switches the bumper from perpendicular and parallel without unscrewing.
- Easily removable brush hidden in the base of the handle.
- The metal brush sleeve slides up and down to vary the brush's rigidity.
- Ideal for Adult, Pediatric and Infant patients.



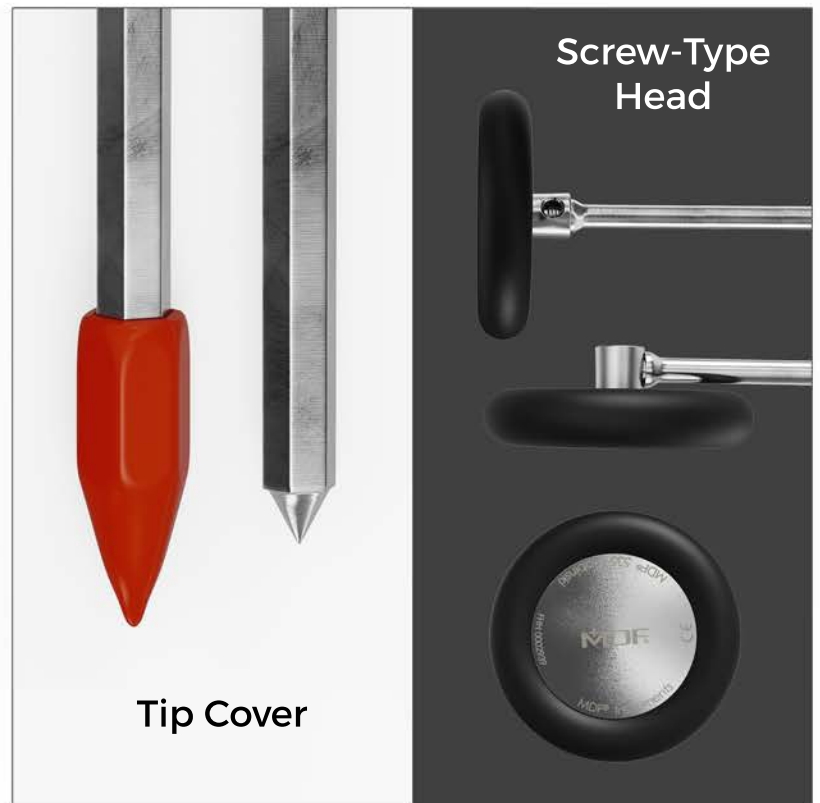
BABINSKI **The Original Re-imagined**

The MDF® Babinski Hammer, the instrument by choice of neurologists, is named after the French neurologist Dr. Joseph François Babinski who is best known for his identification of the toe phenomenon. This diagnostic instrument is also often referred to as a Rabiner hammer. MDF® has modified the original Babinski hammer to incorporate modern design and functionality for eliciting myotatic and plantar responses with less effort and greater patient comfort.



MDF53511

- Hammer head is a chrome-plated brass disc grooved to house the silicone bumper.
- 2-in-1 Dual Bumper unscrews to convert from parallel to the shaft to perpendicular.
- Weighted chrome-plated brass handle is balanced for controlled striking.
- Sand-brushed hexagonal handle is also designed with a pointed tip.
- Red tip sleeve covers the sharp end while not in use and can be used for visual field tests.
- Ideal for Adult, Pediatric and Infant patients.



BABINSKI BUCK LIGHTWEIGHT Multifunctional 5-in-1

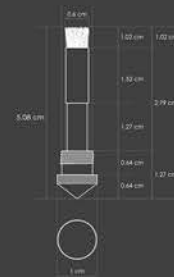
The MDF® Babinski Buck™ Lightweight Reflex Hammer is a 5-in-1 multifunctional instrument designed to perform all reflex tests, with less effort and greater patient comfort, by combining the functions and features of an integrated Babinski-tip, dual-mallet Buck percussor, and built-in brush into one reflex hammer.



MDF515PBT11

- Integrated Babinski tip and dual mallet Buck percussor.
- Balance-weighted head includes large and small mallets constructed of TPR.
- Ergonomic lightweight HDP handle is precisely balanced for increased control.
- Easily removable brush hidden in the base of the handle.
- Metal brush sleeve slides up and down to vary the brush's rigidity.
- Ideal for Adult, Pediatric and Infant patients.

Built-in Brush (with Sleeve)



BABINSKI BUCK Multifunctional 5-in-1

The MDF® Babinski Buck™ Reflex Hammer is a 5-in-1 multifunctional instrument designed to perform all reflex tests, with less effort and greater patient comfort, by combining the functions and features of an integrated Babinski-tip, dual-mallet Buck percussor, and built-in brush into one reflex hammer.



MDF515BT11

- Integrated Babinski tip and dual mallet Buck percussor.
- Balance-weighted head includes large and small mallets constructed of TPR.
- Ergonomic chrome-plated brass handle, features a diamond-textured grip for increased control.
- Easily removable brush hidden in the base of the handle.
- Metal brush sleeve slides up and down to vary the brush's rigidity.
- Ideal for Adult, Pediatric and Infant patients.

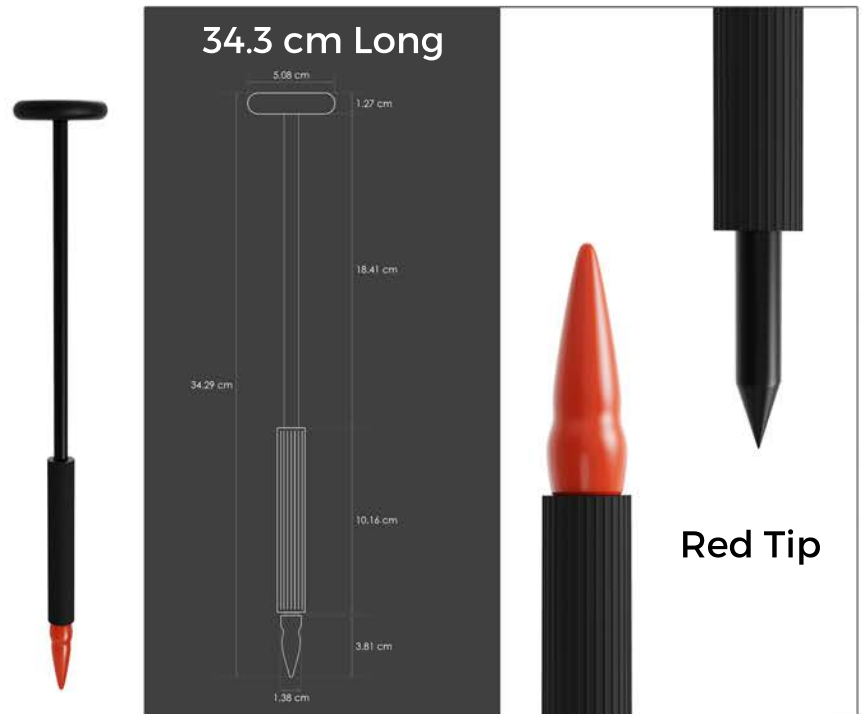


QUEEN SQUARE Leveraged Length

MDF® has redesigned the Queen Square Hammer to make it even more effective for eliciting myotatic, plantar, and abdominal responses. First popularized and named at the National Hospital for Nervous Diseases in Queen Square, London, this weighted, agile percussion device features a softer silicone bumper and blunted tip for patient comfort and ease of use for the healthcare professional. A removable grip and more flexible handle ensure increased percussion accuracy and effectiveness. The red handle tip can be used as a target for testing visual fields.

- New, softer silicone bumper encloses the chrome-plated brass disc head.
- Long, flexible nylon-plastic handle with tapered point allows for a leveraged weighted swing.
- Removable grip offers increased control.
- Bright red tip cover blunts tip and can be used for visual field tests.
- Ideal for Adult, Pediatric and Infant patients

MDF54511



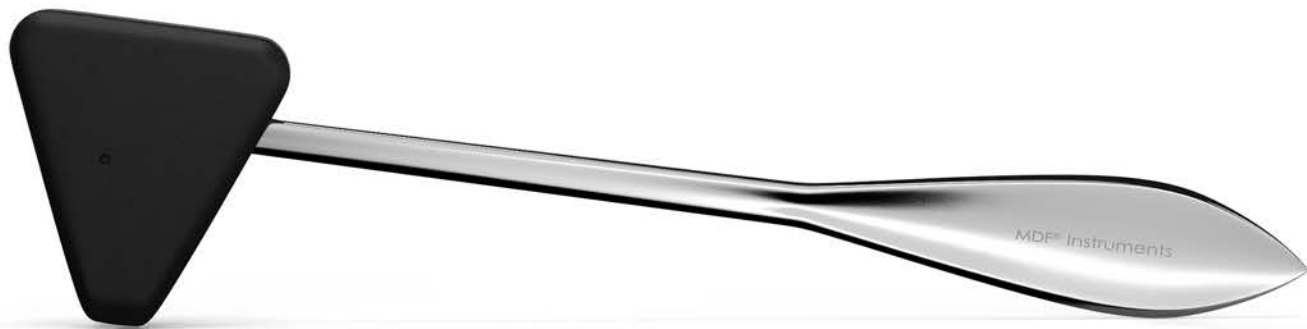
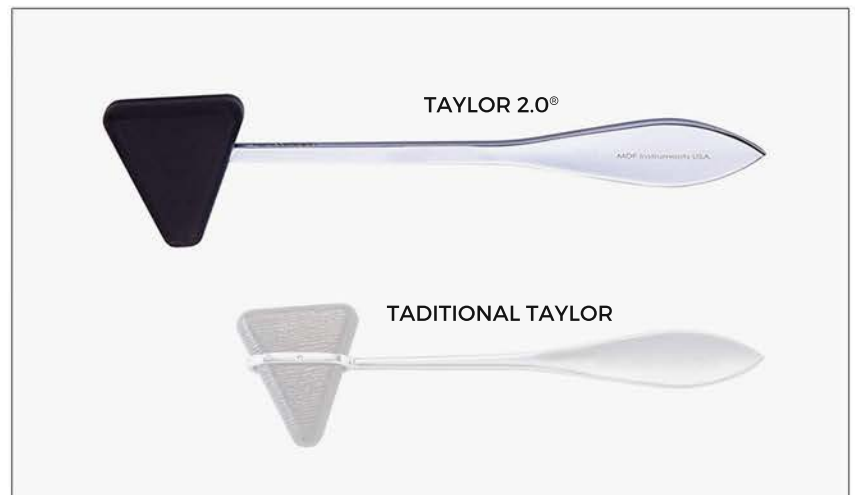
TAYLOR 2.0® The Original Improved

The MDF® Taylor 2.0® Hammer is a Taylor-style hammer with a patented weighted design. It accurately and effectively elicits muscle stretch reflexes, superficial or cutaneous reflexes, as well as plantar and abdominal reflexes, with less effort and greater patient comfort.



MDF505XL11

- Weighted triangular mallet provides correct contact resistance for more effective testing.
- Advanced, sandblasted silicone head with soft base and rounded apex.
- Ergonomically scalloped handle base provides greater hand precision.
- Pointed tip for eliciting superficial or cutaneous reflexes,
- Extra-long chrome-plated zinc-alloy handle is precisely balanced for increased control.
- Ideal for Adult, Pediatric and Infant patients.



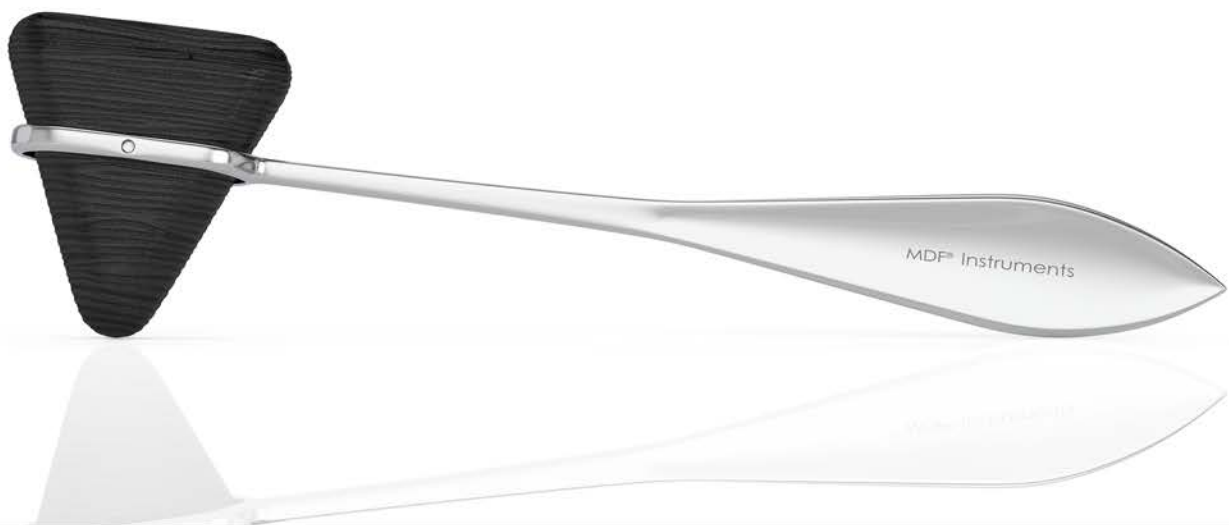
TAYLOR The Original Improved

Utilizing the original design of Dr. John Madison Taylor, MDF® Instruments has developed the MDF® Taylor hammer to incorporate modern design and functionality for eliciting myotatic and plantar responses, with less effort and greater patient comfort.



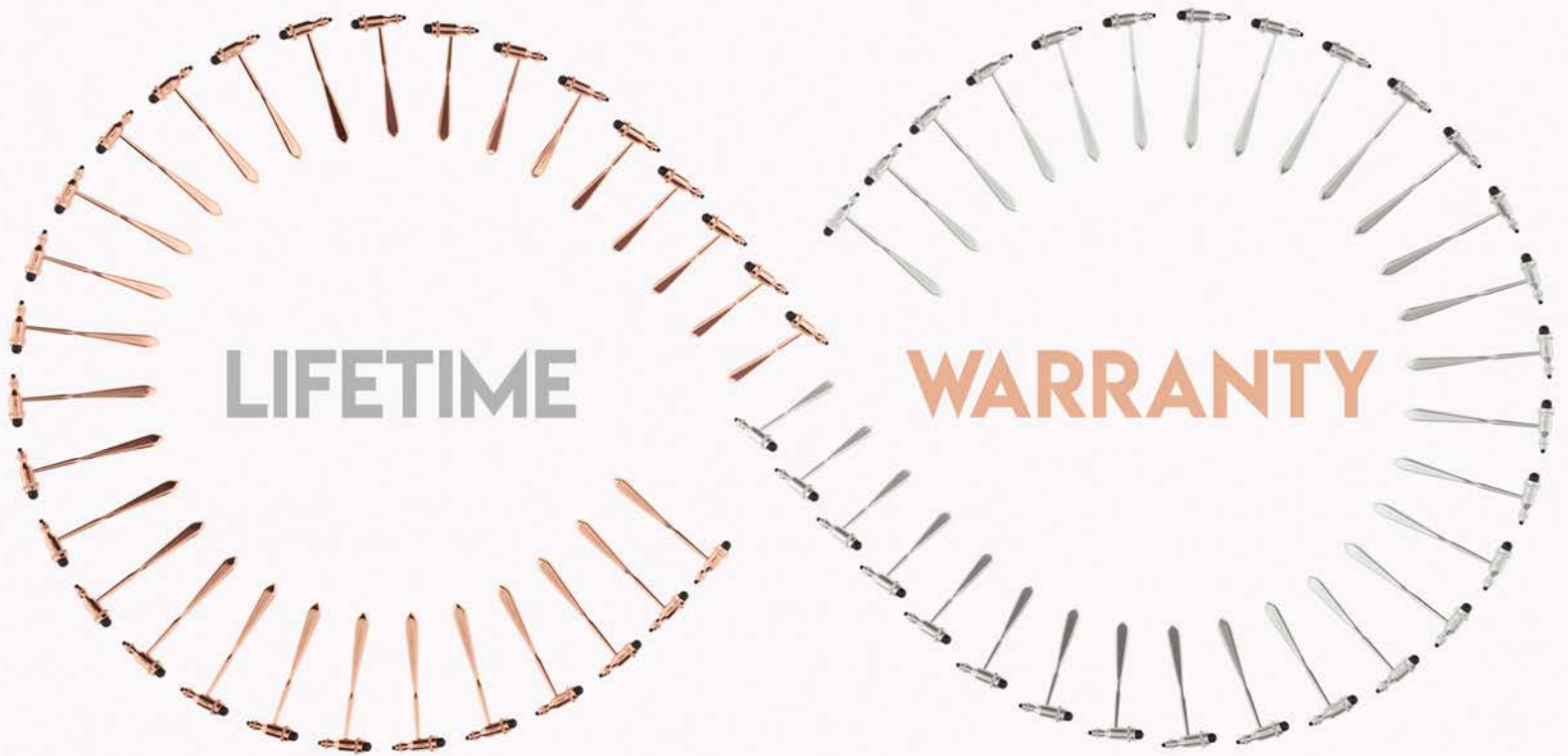
MDF50511

- Silicone triangular head has a beveled apex and soft base.
- Best suited to precisely strike tendons and percuss the abdomen.
- Weighted chrome-plated zinc-alloy handle is precisely balanced.
- Encircling band with pin firmly secures the head midway between bumper apex and base.
- Pointed handle tip designed for eliciting cutaneous and plantar reflexes.
- Ideal for Adult, Pediatric and Infant patients.



WARRANTY

Quality is our reflex. All MDF® reflex hammers qualify for a lifetime warranty after registration of the unit. MDF® reflex hammers with defects in material or craftsmanship will be replaced or repaired without charge for the life of the instrument.



OTOSCOPES AND OPHTHALMOSCOPES

German Engineering



ELITEVUE SET

EliteVue Macro Otoscope & ri-scope® L Ophthalmoscope

The Riester EliteVue Macro-Otoscope offers a significantly improved view of the auditory canal and tympanic membrane, enabling more efficient diagnosis and enhanced patient outcomes. The ri-scope® L is a premium, hand-held ophthalmoscope with renowned optics, reduced reflection and LED technology, to enable a more efficient diagnosis with lower maintenance costs.



RSTR-2210-203.003 (USB)

EliteVue

- Significantly improved view of the auditory canal and complete look at the tympanic membrane.
- The EliteVue features TWICE the field of view and, at more than 5-fold magnification.
- Offers 66% higher magnification compared to standard otoscopes.
- Optics wheel at the back allows to adjust focal depth.
- The high-performance LED illumination (4,000 Kelvin, CRI=92) is suitable for throat illumination.
- Easy to operate SpecEjec® specula ejection device at the back of the otoscope.

ri-scope® L (L2 LED)

- Renown for its high performance optics and ultra-bright illumination.
- Uses an aspherical condenser lens, giving a reflection-reduced view (even with small pupils).
- Offers coaxial light beams providing LED illumination up to 150,000 lux.
- 29 LENSES: plus (1-10, 12, 15, 20, 40); minus (1-10, 15, 20, 25, 30, 35).
- APERTURES: slit, fixation star, large circle, medium circle, small circle, red-free filter, blue filter, polarization filter.

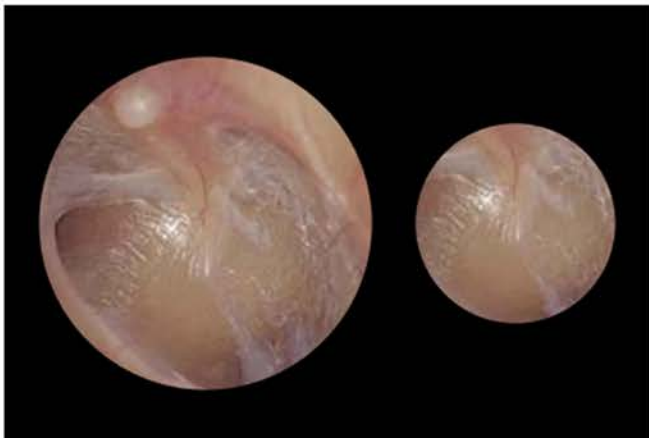
INCLUDES

- EliteVue Otoscope with 3.5V LED
- L2 LED Ophthalmoscope
- Lithium-Ion rechargeable battery
- Plug in charger (optional USB)
- C-handle
- Specula tube
- Free soft case

TECHNICAL DATA*

	EliteVue	ri-scope® L
Field of view ϕ	11 mm (0.43 in)	5.5 mm (0.22 in)
Magnification	5x	3x

*at a distance of 15 mm (0.59 in) between landmark and distal tip of the specula.





RSTR-10960

RI-SCOPE® L SET ri-scope® L Otoscope & Ophthalmoscope

The ri-scope® L otoscope and ophthalmoscope set is designed for demanding everyday use in doctors' practices and hospitals. ri-scope® L – premium hand-held otoscopes & ophthalmoscopes have advanced optics, reduced reflection and LED technology to enable a more efficient diagnosis with lower maintenance costs. They are available with fibre optics or direct illumination and several power supply options.

(Insufflator bulb sold separately)



RSTR-3746-203.015 (USB)

ri-scope® L3 Otoscope

- High-end fiberoptics for optimal beaming and transmission of light with 3.5 V LED illumination.
- Bi-directional swivelling optical glass with 3-fold magnification.
- Operation lens with 4-fold magnification and glass mini optic.
- Integrated fiberoptic throat illuminator.
- Suitable for pneumatic tests (insufflator bulb not included).
- Easy to operate SpecEjec® specula ejection device at the back of the otoscope.

ri-scope® L2 Ophthalmoscope

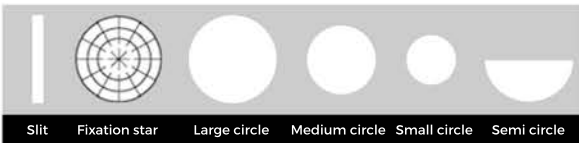
- Dioptre wheel w/29 corrective lenses.
- Optimized high-performance optics with aspherical condenser lens.
- Offers coaxial light beams providing LED illumination up to 150,000 lux.
- 29 LENSES: plus (1-10, 12, 15, 20, 40); minus (1-10, 15, 20, 25, 30, 35).
- APERTURES: slit, fixation star, large circle, medium circle, small circle, semi-circle, red-free filter, blue filter, polarization filter.

INCLUDES

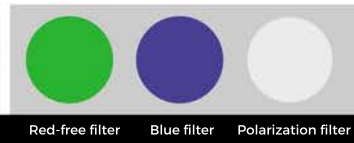
- ri-scope® L3 Otoscope with 3.5V LED
- ri-scope® L2 LED Coaxial/Parallel beam path
- Lithium-Ion rechargeable battery
- Plug in charger (optional USB, or C-Battery)
- C-handle
- Specula tube
- Free soft case *(Not available for C-Battery L3L2)*



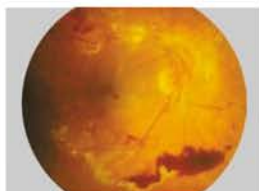
APERTURES



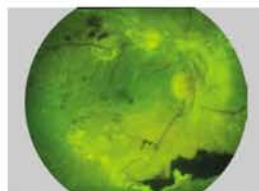
FILTERS



Healthy fundus



Pathological fundus



Fundus w/Red-free filter



E-SCOPE® SET

e-scope® Otoscope & Ophthalmoscope

Riester e-scope® oto-/ophthalmoscopes use advanced optics and LED technology that results in a more efficient diagnosis and reduced maintenance costs. Available in an impact-resistant case, these sets provide fiber-optic, Xenon (3200K) illumination, an even field of illumination, 3x magnifying pivoting lens, and are suitable for pneumatic tests. Set includes ten (10) reusable ear specula (5 x 2.5mm, 5 x 4mm).

(Operates on 2 AA batteries.)



RSTR-2131-202 (Xenon)
RSTR-2131-203 (LED)

e-scope® Otoscope

- Fibre optic version with 2.5 V xenon (3200 K) or innovative 3.7 V LED illumination (5500 K).
- Includes a 3x magnifying pivoting lens.
- Even field of illumination and suitable for pneumatic tests.
- Includes easily detachable and reusable ear-specula (5 x 2.5mm, 5 x 4mm).
- The high-performance LED illumination (4,000 Kelvin, CRI=92) is suitable for throat illumination.
- Easy to operate SpecEjec® specula ejection device at the back of the otoscope.

e-scope® Ophthalmoscope

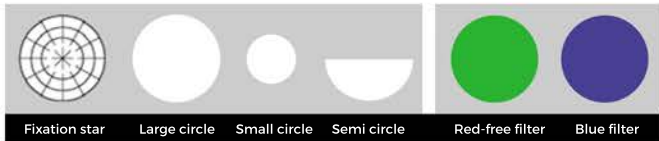
- Aspherical condenser lens, spectacle protection, parallel optical path and dust protection.
- Available with 2.5 V Xenon or innovative 3.7 V LED illumination for a higher-contrast.
- Dioptre disc with 18 corrective lenses (+/- 1, 2, 3, 4, 6, 8, 10, 15, 20 dioptries).
- 6 apertures (red-free filter, small circle, large circle, fixation star, semi circle, and blue filter).

INCLUDES

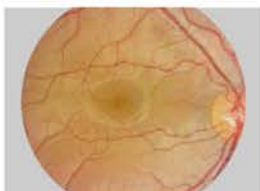
- e-scope® Otoscope with 2.5V Xenon or 3.5V LED
- e-scope® Ophthalmoscope with 2.5V xenon or 3.5V LED
- Specula tube
- Free hard case



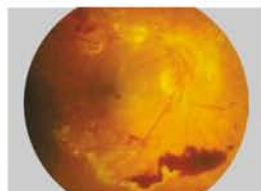
APERTURES



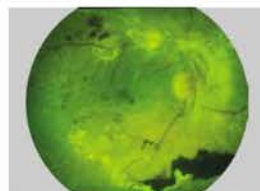
FILTERS



Healthy fundus



Pathological fundus



Fundus w/Red-free filter



WARRANTY

Riester diagnostic sets are covered under the manufacturer's warranty for the duration of the students' academic careers.



ADDITIONAL PRODUCTS

Additional Medical Devices



PURESONA™ STETHOSCOPE DIAPHRAGM

Protect Against Cross Contamination

Clean and Clear - PureSona™ is our best performing, and also most hygienic diaphragm yet. Gain up to 5 decibels of volume on your current stethoscope (28% louder) simply by changing your diaphragm. Replace effortlessly in between patients to proactively reduce cross contamination and infection.

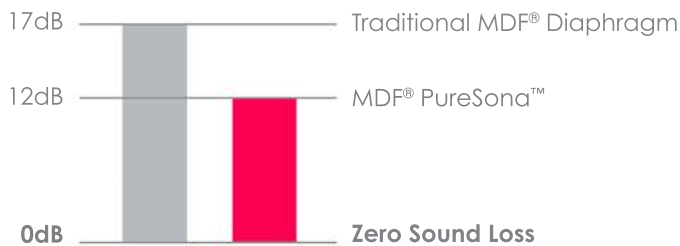


MDF480

- Provides up to a 28% decrease in sound loss.
- Helps prevent cross contamination between patients.
- Easy to install and remove in seconds.
- Works with all adult-size, major stethoscope models and brands.
- BPA-Free, Latex-Free, Recyclable and No Micro Plastics.



REDUCED SOUND LOSS



LUMiNiX® II Professional Medical Penlight

The MDF® LUMiNiX® II Illuminator™ Professional Diagnostic Penlight features a warm LED light for safe eye examination, a durable copper construction, pupil gauge reference and ruler, and a non-slip surface making this luxurious lighting instrument a leader in its class.



MDF611

- Pupil gauge reference and ruler designed onto the handle.
- ON/OFF button at the top of the penlight.
- 2AAA Batteries Included



MEDICAL TRAVEL CASE Hard Shell Stethoscope Carrying Case

The MDF® Medical Travel Case is designed to simplify a modicum of your busy complicated lifestyle. Use the oversized design to have all your work essentials in one place so it can quickly be put into your bag or backpack. Whether your practice takes you to a hospital, an office, an ambulance, a school, on the road or to another country, this travel case keeps your med-life secure and ready to go.



MDFSCM12



MDFSCM12



- Designed to fit all MDF® portable devices as well as others' stethoscopes and medical products.
- Compression mesh pouch and nylon strap secures your devices into place.
- The Heavy Duty Zipper is designed with industrial strength construction.
- The Double Fold Protection Sleeve prevents the zipper from catching on the fabric.
- The external shell is both water resistant and shock resistant.

MDF® 22 Medical Grade Tuning Forks

The MDF® 22 is a set of medical grade tuning forks instruments that operate at frequencies of 512, 256 and 128 Hz.



MDF22

- Each Tuning Fork is engraved with its appointed frequency.
- Designed with weighted balance for optimal use.
- Comfortable extra-long handle.

