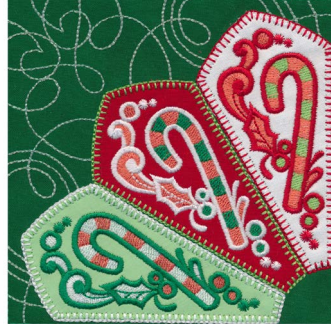


Note: Some designs in this collection may have been created using unique special stitches and/or techniques. To preserve design integrity when rescaling or rotating designs in your software, always rescale or rotate designs using the handles directly on-screen.



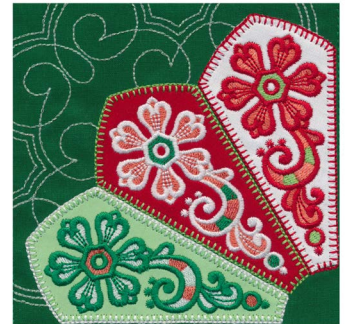
12720-01 Holly Dresden Applique
5.20 X 5.19 in.
132.08 X 131.83 mm
29,954 St.



12720-02 Candy Cane Dresden Applique
5.20 X 5.19 in.
132.08 X 131.83 mm
31,917 St.



12720-03 Stars Dresden Applique
5.24 X 5.26 in.
133.10 X 133.60 mm
28,976 St.



12720-04 Snowflake Dresden Applique
5.17 X 5.18 in.
131.32 X 131.57 mm
33,082 St.



12720-05 Bells Dresden Applique
5.32 X 5.32 in.
135.13 X 135.13 mm
31,718 St.



12720-06 Mistletoe Dresden Applique
5.29 X 5.29 in.
134.37 X 134.37 mm
29,892 St.



12720-07 Poinsettia Dresden Applique
5.20 X 5.20 in.
132.08 X 132.08 mm
33,880 St.



12720-08 Ornaments Dresden Applique
5.20 X 5.19 in.
132.08 X 131.83 mm
31,264 St.



12720-09 Hearts Dresden Applique
5.31 X 5.31 in.
134.87 X 134.87 mm
29,193 St.



12720-10 Blank Dresden Applique
5.00 X 5.00 in.
127.00 X 127.00 mm
6,379 St.



Holiday Dresden Appliques

#12720 / 10 Designs

Listings below indicate color sample, stitching order and suggested thread color number. Most numbers indicate Isacord thread.
Colors beginning with 7 refer to Yenmet Metallic and 9 refer to Isacord Multicolor Variegated.

12720-10 Blank Dresden Applique

■	1. 1st Wedge Placement Stitch.....	5610
■	2. 1st Wedge Tackdown	5610
□	3. 1st Wedge Blanket Stitch.....	0015
■	4. 2nd Wedge Placement Stitch.....	1903
■	5. 2nd Wedge Tackdown	1903
■	6. 2nd Wedge Blanket Stitch.....	5610
□	7. 3rd Wedge Placement Stitch.....	0015
□	8. 3rd Wedge Tackdown.....	0015
■	9. 3rd Wedge Blanket Stitch.....	1903
■	10. Seam Stitch.....	5400

Isacord Thread Colors Used in “Holiday Dresden Applique”

Collection #12720

0015 White	5400 Scrub Green
1521 Flamingo	5610 Bright Mint
1903 Lipstick	7032 (AN6) Pearlescence Green

Cut-in-Place Applique Instructions

1. Hoop your fabric and backing.
2. Sew the *Placement* stitch. **PHOTO 1**
3. Place a piece of applique fabric over the placement stitch so that it is completely covered.
4. Sew the *Cut Line & Tackdown*.
5. Carefully cut away the excess applique fabric. **PHOTO 2**
6. Sew the remainder of the design and repeat for any remaining pieces. **PHOTO 3**

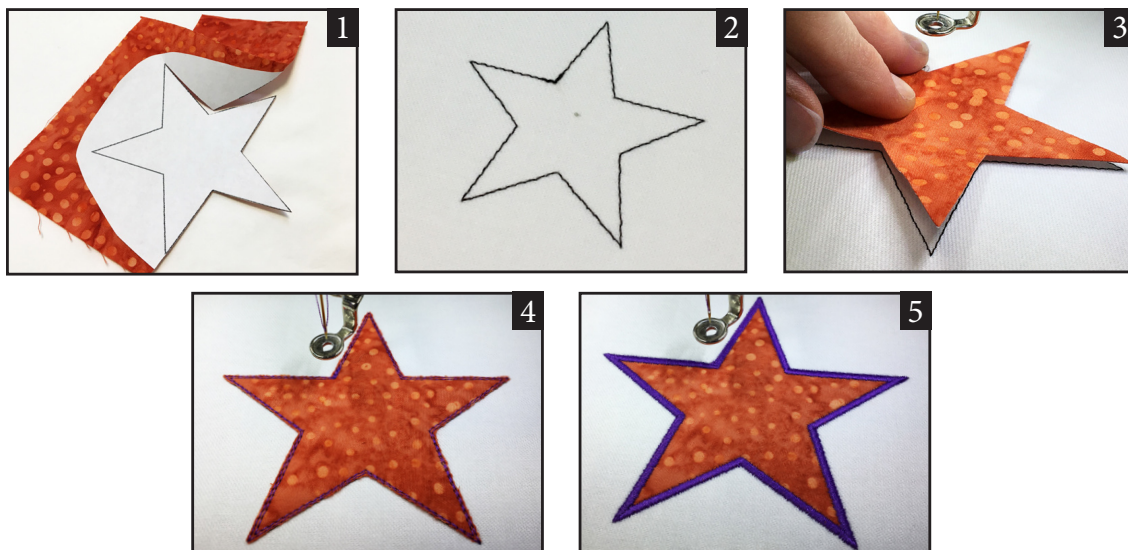


Pre-Cut Applique Instructions

1. Print out the necessary pages from the PDF of the applique pattern(s).
2. Mark the right side of the pattern pieces so you'll know which direction to lay the pattern on the fabric.
3. Lightly spray the wrong side of the pattern pieces with temporary adhesive spray and allow it to set for a few minutes.
4. Place the pattern pieces on the right side of the fabric and carefully cut them out. **PHOTO 1**
5. Sew the placement stitch on your hooped fabric. **PHOTO 2**
6. With the paper still stuck to the right side of the applique fabric, spray the wrong side of the fabric with temporary spray adhesive.
7. Place the fabric inside the placement stitch, so that it completely covers the placement stitch and then remove the paper pattern. **PHOTO 3**
8. Sew the tackdown. **PHOTO 4**
9. Sew the remainder of the design and repeat for any remaining pieces. **PHOTO 5**

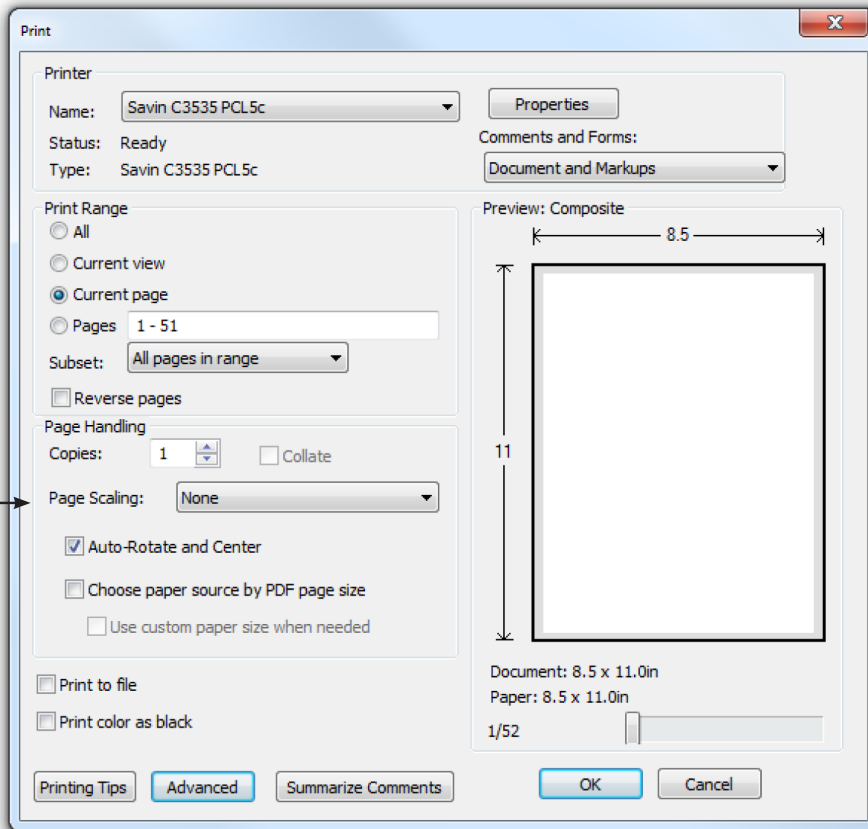
NOTE: The patterns are sized for the designs as they were made. If you resize the design, you will need to resize the pattern the same amount. You can print out the pattern at the normal size then copy it on a copy machine at the changed size. For example, resize the designs to 80%, resize the printed pattern to 80%.

TIP: When Printing the patterns, make sure that the "Fit to page" option is **UNCHECKED** in the Print Dialog Box. If this option is checked the printed patterns will not be actual size.



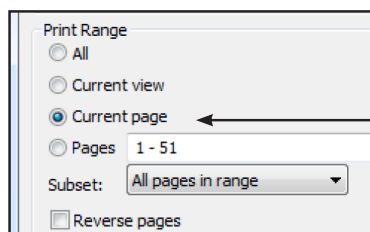
ATTENTION

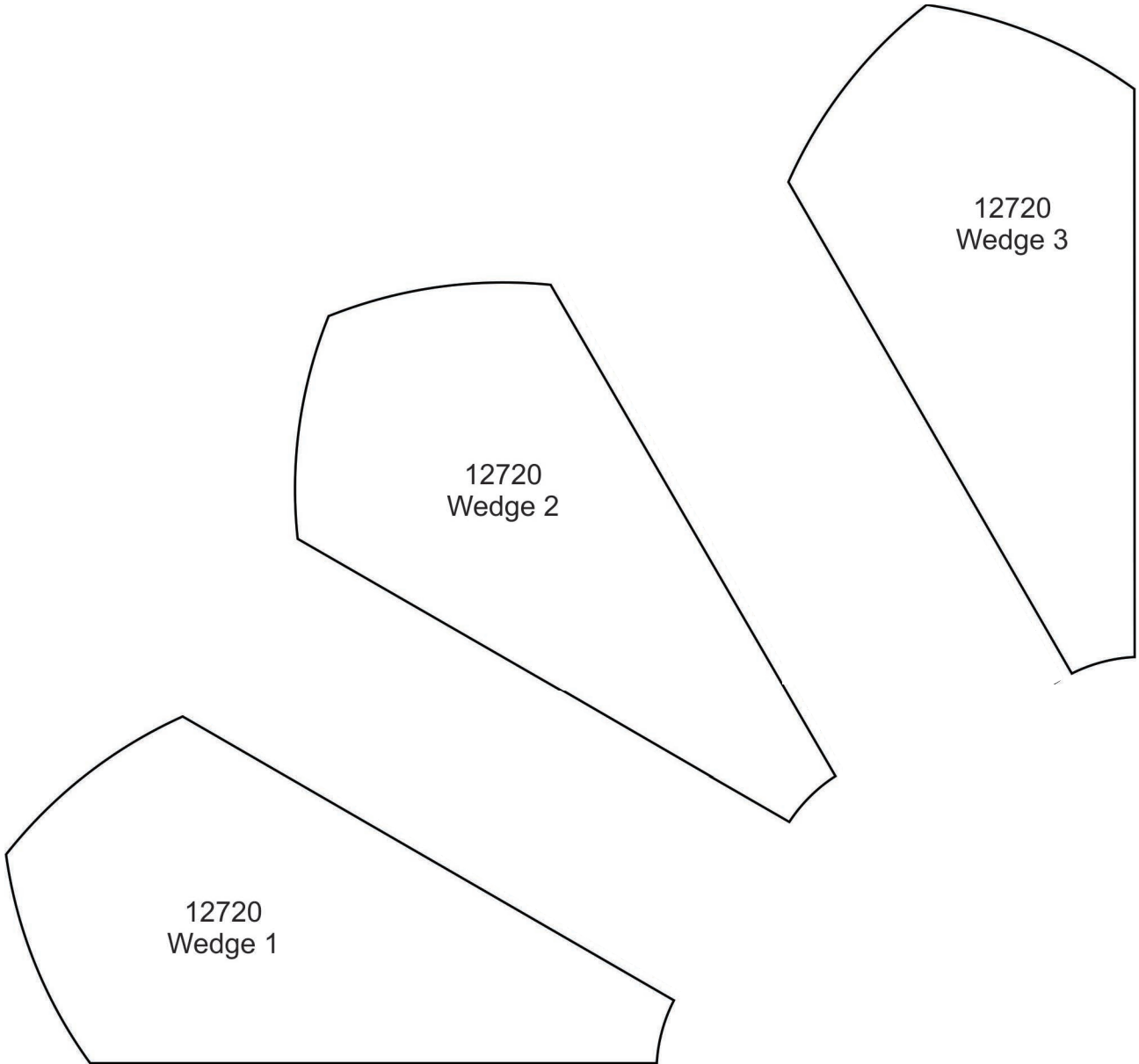
When printing this document, any page scaling or page fitting options in your print dialog box must be turned OFF or set to NONE so that your files will print out at their actual size. Images not printed at actual size will not function as intended.



TO SAVE PAPER

Only print the desired image by navigating to the image's page, go to File > Print and select "Current page" in the print dialog box. Repeat for each desired image.







1 - Holly Dresden Plate

2 - Candy Cane Dresden Plate

3 - Stars Dresden Plate

4 - Snowflake Dresden Plate

5 - Bells Dresden Plate

6 - Mistletoe Dresden Plate

7 - Poinsettia Dresden Plate

8 - Ornaments Dresden Plate

9 - Hearts Dresden Plate

10 - Blank Dresden Plate (not shown)

Finished Size: 38" square



Holiday Dresden Appliques

Instructions

Supplies

- OESD Embroidery Collection #12720 Holiday Dresden Applique
- OESD Heavy Weight TearAway stabilizer
- Cotton background fabrics
 - 2 yards white (20 hoopings)
 - 1 ½ yards green (16 hoopings)

NOTE: Yardages account for cutting pieces large enough to hoop in a 5 x 7 or similar hoop, approximately 10" x 14". Large or smaller hoops may require slightly more or slightly less fabric.
- Applique fabrics
 - ⅜ yard light green
 - ⅜ yard red
 - ¼ yard white
 - ¼ yard dark green

NOTE: Applique yardages assume that each applique wedge is cut from a rectangle. Fabric can be conserved by “nesting” applique wedges.
- Sashing fabrics
 - ⅓ yard red for sashing
 - 10" square light green sashing tiles
- Backing fabric
 - 1 ¼ yard red (cut to 40" square)
- Binding fabric
 - ⅓ yard (assuming 2 ½" strips for binding)
- 40" square batting
- Temporary spray adhesive
- Isacord embroidery threads

Prep Appliques & Background Fabrics

- Pre-cut applique shapes using the provided applique pattern. You will need:
 - 36 light green wedges
 - 36 red wedges
 - 20 dark green wedges
 - 16 white wedges
- Cut background fabrics. Each background piece should be large enough to hoop, approximately 10" x 14".
 - Cut 20 white background pieces
 - Cut 16 dark green background pieces

Embroider the Blocks

- Spray a hoop-sized piece of OESD Heavy Weight TearAway stabilizer with temporary spray adhesive and apply to the wrong side of a hoop-sized piece of background fabric. Hoop the background fabric and stabilizer together. Use the list below to determine which background fabric to use for each design. Stitch **FOUR** of every design.

- **WHITE** background blocks:

- 12720-01 Holly Plate
- 12720-03 Stars Plate
- 12720-05 Bells Plate
- 12720-07 Poinsettia Plate
- 12720-09 Hearts Plate

- **GREEN** background blocks:

- 12720-02 Candy Cane Plate
- 12720-04 Snowflake Plate
- 12720-06 Mistletoe Plate
- 12720-08 Ornaments Plate



Holiday Dresden Appliques

Instructions

- Stitch design according to the thread chart. After you stitch the placement stitch for the first applique wedge, lightly spray the wrong side of the applique fabric with temporary spray adhesive. Place the applique wedge onto the background fabric, aligning it with the placement line.
 - For **WHITE** background blocks, the applique placement order is:
 - 1st wedge: light green
 - 2nd wedge: red
 - 3rd wedge: dark green
 - For **GREEN** background blocks, the applique placement order is:
 - 1st wedge: light green
 - 2nd wedge: red
 - 3rd wedge: white
- The final color on each design is notated on the thread chart as *Seam Stitch*. This color change should be stitched in a thread color that will blend with the background fabric used for each design.
 - ***TIP:** Stitch the seam stitch using a dark colored bobbin thread to make it easier to trim the finished block later.
- Remove the hoop from the machine and the fabric from the hoop.
- Carefully trim all jump threads and gently remove excess stabilizer following the manufacturer's instructions.
- Repeat for all embroidery files, applying applique fabric where required. (Refer to applique instructions if needed.)

Assemble the Blocks

- Turn each block over and trim to 1/4" outside the seam stitch.
- Stitch the four designs of each plate together with a 1/4" seam, matching the edges of the wedges together to form a plate.

Assemble the Quilt

- Refer to the quilt diagram to assist with assembling the quilt.
- Cut the sashing fabrics:
 - 12 - 10 1/2" x 2 1/2" red
 - 4 - 34 1/2" x 2 1/2" red
 - 8 - 2 1/2" light green squares
- Stitch together the block rows, adding a 10 1/2" strip of sashing between each block.
- Stitch two sashing rows with light green center squares.
- Stitch the sashing rows between the block rows.
- Add a 34 1/2" strip to the top and bottom of the quilt.
- Add a light green square to each end of two 34 1/2" strips.
- Sew the strips with the corner squares to the right and left side of the quilt.

Finish the Quilt

- Layer the quilt back, batting, and top. Adhere all layers with temporary spray adhesive. Center the top as it will be slightly smaller than the back and batting.
- Quilt as desired.
- Trim the batting and backing to match the edge of the quilt top.
- Cut the binding fabric into 2 or 2 1/2" strips and bind using your favorite method.