



PG 164
HATTON HAND
WRAPS

HATTON BOXING



WORLD CLASS FITNESS SOLUTIONS: MIDDLE EAST DISTRIBUTOR

✉ INFO@MEFITPRO.COM ☎ +971 4 323 3232 🌐 WWW.MEFITPRO.COM

HATTON HEAVY-DUTY PUNCH BAG



Build punching power with this quality punch bag that's made from a choice of two materials: leather or PVC.

- Build punching power with this quality punch bag that's made from a practical combination of leather and PVC
- Research-proven bag fill exclusive to Hatton Boxing remains evenly distributed. That means it retains shape during the toughest of workouts
- Unique properties guarantee maximum absorption on impact and so minimising force on contact to allow you to work harder and longer
- Each bag comes with a six-hook chain for maximum support and safety
- Available in two sizes: 100cm x 40cm or 130cm x 40cm
- One-year warranty

PRODUCT INFORMATION

JLBOX-HAT100BPU	PU	Hatton heavy bag 100 x 40
JLBOX-HAT100BL	Leather	Hatton heavy bag 100 x 40
JLBOX-HAT130BPU	PU	Hatton heavy bag 130 x 40
JLBOX-HAT130BL	Leather	Hatton heavy bag 130 x 40

HATTON 3-IN-1 LEATHER PUNCH BAG



Essential bag for every gym whose versatility makes it ideal for the home gym/garage too.

- Superb 3 in 1 bag that combines the benefits of training with a straight punch bag, maize bag and a floor-to-ceiling ball
- Perfect for practising the full range of punches from hooks to upper cuts
- Bag is beautifully hand-crafted from leather with a 1-inch inner foam lining to protect you on impact
- Features a soft, rag-filled lower ball and granule-filled upper ball. Both retain their shape however brutal the workout
- Note: the bag requires hooks for a secure fixing (contact our service team for options)
- One-year warranty

PRODUCT INFORMATION

JLBOX-HATBTRP	Leather	1" inner foam
----------------------	---------	---------------

HATTON SPEED BALL



A must-have piece of training equipment for any boxer, the Speed Ball improves hand-eye co-ordination, speed and agility.

- Improve reaction times, hand speed and co-ordination with this tough speed ball
- Constructed from heavy-duty leather that'll absorb the best you've got for years to come
- Reinforced nylon loop attachment guarantees durability and minimum wear
- Begin your speed-ball training with the three-rebound method. Every time you hit the ball, it'll rebound three times before you hit it again. Start slowly and work up to a faster rhythm
- Attach via a free-standing or wall-mounted unit (available separately)
- One-year warranty

PRODUCT INFORMATION

JLBOX-HATSB

Hatton speed ball

HATTON FLOOR-TO-CEILING BALL



Practice defensive techniques, movement and footwork, with this superb and great-value reaction ball.

- Improve hand-eye co-ordination, speed, reaction time and agility with this essential piece of affordable kit
- Unpredictable ball movement focuses your mind – and hands – so you learn to read the bag and learn to expect the unexpected
- Quality hand-stitched and riveted ball that's extremely robust
- Fitted with heavy-duty D-rings at both top and bottom
- Comes with a bungee cord and adjustable leather straps for floor and ceiling attachment
- One-year warranty

PRODUCT INFORMATION

JLBOX-HATPB

Hatton punching ball

HATTON PRO LEATHER LACE UP GLOVES



Elegant pair of quality leather laced gloves that are perfect for sparring.

- These superb gloves are ideal for sparring as they won't punish your opponent
- Robustly constructed from an outer layer of leather and an injected moulded design
- Aesthetically pleasing Hatton printed logo on the outer plus woven Hatton wings label on the wrist
- Extremely comfortable to wear. Also extremely hard-wearing
- Lace-up system clamps hands securely in place
- One-year warranty

PRODUCT INFORMATION

JLBOX-HATPG16	16oz	Pro leather lace up gloves
JLBOX-HATPG14	14oz	Pro leather lace up gloves
JLBOX-HATPG12	12oz	Pro leather lace up gloves
JLBOX-HATPG10	10oz	Pro leather lace up gloves
JLBOX-HATPG08	08oz	Pro leather lace up gloves

HATTON PRO LEATHER VELCRO GLOVES



Superb pair of velcro gloves that come into their own when sparring.

- These superb gloves are ideal for sparring as they won't punish your opponent
- Robustly constructed from an outer layer of leather and an injected moulded design for improved fist formation
- Aesthetically pleasing Hatton printed logo on the outer plus woven Hatton wings label on the wrist
- Extremely comfortable to wear. Also extremely hard-wearing
- Neat Velcro system clamps hands securely in place
- One-year warranty

PRODUCT INFORMATION

JLBOX-HATSG16	16oz	Pro leather Velcro gloves
JLBOX-HATSG14	14oz	Pro leather Velcro gloves
JLBOX-HATSG12	12oz	Pro leather Velcro gloves
JLBOX-HATSG10	10oz	Pro leather Velcro gloves
JLBOX-HATSG08	08oz	Pro leather Velcro gloves

HATTON PU COOL FLOW FITNESS GLOVES



Cool Flow technology heightens comfort during sparring or fitness workouts.

- The perfect set of gloves for sparring sessions or fitness workouts like BoxFit
- Polyurethane-constructed outer layer looks slick and retains its shape during workouts. Also extremely durable
- New Cool Flow technology eases clamminess of hands and so adds comfort
- Injected moulded design steers you into the perfect fist formation
- Neat system clamps hands securely in place
- One-year warranty

PRODUCT INFORMATION

JLBOX-HATFG14	14oz	PU CoolFlow Fitness gloves
JLBOX-HATFG12	12oz	PU CoolFlow Fitness gloves
JLBOX-HATFG10	10oz	PU CoolFlow Fitness gloves
JLBOX-HATFG08	08oz	PU CoolFlow Fitness gloves

HATTON PU SPARRING GLOVES



Superb pair of Velcro gloves that are ideal for sparring or fitness workouts.

- These impressive gloves are ideal for sparring as they won't punish your opponent
- Constructed from an outer layer of polyurethane and an injected moulded design for improved fist formation and greater comfort
- Aesthetically pleasing Hatton printed logo on the outer plus woven Hatton wings label on the wrist
- Extremely comfortable to wear. Also extremely hard-wearing
- Neat Velcro system clamps hands securely in place
- One-year warranty

PRODUCT INFORMATION

JLBOX-HATBG16	16oz	PU boxing gloves
JLBOX-HATBG14	14oz	PU boxing gloves
JLBOX-HATBG12	12oz	PU boxing gloves
JLBOX-HATBG10	10oz	PU boxing gloves
JLBOX-HATBG08	08oz	PU boxing gloves

HATTON LEATHER AIRPRO FOCUS PADS



First-class quality leather pads, ideal for speed and combo drills.

- Air Flow technology provides maximum protection for the toughest boxing session
- Quality, shock absorbent padding to withstand strong blows
- Sophisticated ventilation to prevent sweat build up and keep your hands cool
- Offers improved grip to ensure a sturdy focus for your training partner.
- Hardwearing, and durable, these pads ensure stability of your hands and wrists
- One-year warranty

PRODUCT INFORMATION

JLBOX-HATFPAD

Hatton Leather Airpro Focus Pads (pair)

HATTON HOOK & JAB PADS



Great value quality PU pads built to absorb the strongest punches.

- Small surface area to help develop precision and timing, sharpening hand speed for the boxer
- Shock absorbing foam adds safety and comfort to withstand strong blows
- Easy slip on design, ideal for functional circuits due to time to put on.
- Anatomically corrects hand position to limit injury
- Tough, and strong, these pads reduce impact forces so you can train harder for longer
- One-year warranty

PRODUCT INFORMATION

JLBOX-HATHJPAD

Hatton PU Curved Hook and Jab Pads (pair)

HATTON PRO LEATHER BODY BELT



An unmatched, quality leather protection belt for trainers and coaches.

- Body pad that offers unrivalled protection for boxing and combat trainers
- Constructed from extra-thick, top-grade cow hide leather for durability, quality and a slick look
- Padded with five layers of cloth-fibre webbing and high-density latex foam. This provides incredibly shock absorption to minimise stress
- Secured in place by rear Velcro strap above waist and cross-shaped straps around back and shoulders
- Suits all shapes and sizes of trainers
- One-year warranty

PRODUCT INFORMATION

JLBOX-HATBB

Hatton Pro Leather Body Belt

HATTON HAND WRAPS



Protect your hands and wrists against punch-related injuries with these affordable wraps.

- The finest stretch cotton for more support and a better fit when wrapping hands
- Features thumb loop with Velcro fastening
- Slick-looking printed Hatton logo
- One-year warranty

PRODUCT INFORMATION

JLBOX-HATHW4

Hatton hand wraps 4mtr

JLBOX-HATHW2.5

Hatton hand wraps 2.5mtr



We've been working closely with Jordan for two years now, so we've seen first-hand what an excellent logistical operation they have. Their knowledge of both our products and our unique customer requirements really sets them apart from other traditional third party logistics providers

JON EADE
MANAGING DIRECTOR
HATTON BOXING



4-IN-1 BOXING STATION



Ultimate freestanding boxing station for gyms tight on space, tailored to suit your own specification.

- Choose from 3 punch bag arms and speedball platform or 4 punch bag arms
- Heavy duty steel frame for safe boxing workout
- Can be used simultaneously by 4 people
- Choose accessories from our Hatton range
- H2530mm, L2040mm, W2040mm, Weight: 116kg
- Lifetime warranty on frame

PRODUCT INFORMATION

JL-7000 3 bag arms and speed ball platform (punch bags not included)

JL-7001 4 bag arms (punch bags not included)

ADJUSTABLE AND FIXED SPEEDBALL PLATFORM



Robust and well-made speedball platform for commercial gyms.

- Strong and sturdy platform that holds your speedball – and its benefits to hand speed, co-ordination and more – securely in place
- Heavy-duty platform construction, black finish on both sides
- 6mm steel wall plate with six fixings to guarantee bracket's firmly fixed to the wall. Box dimensions are 600mm x 600mm x 250mm
- Includes wall fittings only. Swivel clip (JL70705) sold separately
- Metal work guaranteed for life. Six months on all other parts

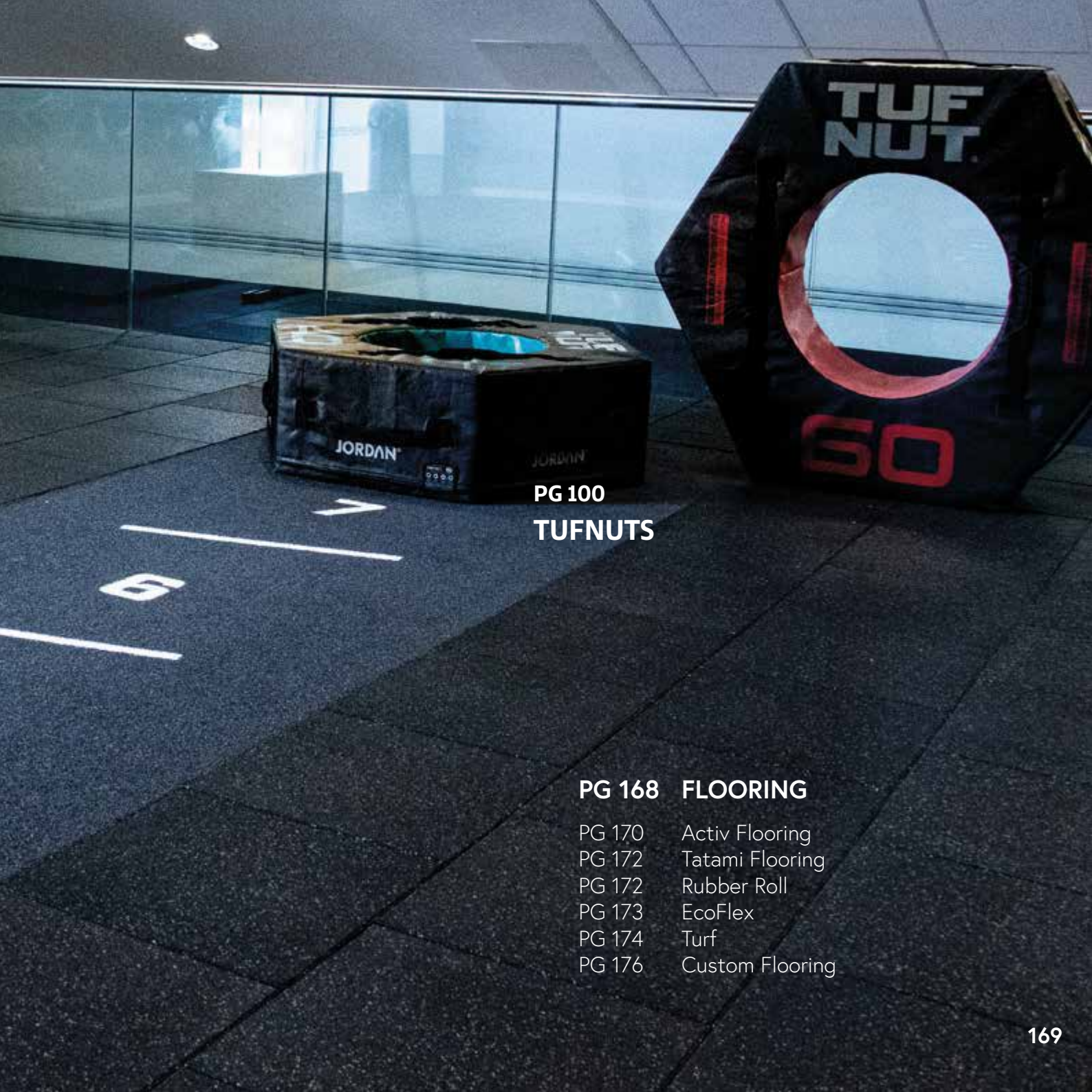
PRODUCT INFORMATION

JLBOX-EASB Elite Adjustable Speedball (Inc Swivel)

JLBOX-EFSB Elite Fixed Speedball (Inc Swivel)

A gym floor with blue rubber matting, white court lines, and various fitness equipment in the background. The floor is made of interlocking blue mats with white lines for court markings. In the background, there is a rack of kettlebells, a rack of medicine balls (black and red), and a stack of black weights. A black box with a red logo is also visible. The word "JORDAN" is printed on the edge of the matting.

FLOORING



PG 100
TUFNUTS

PG 168 FLOORING

- PG 170 Activ Flooring
- PG 172 Tatami Flooring
- PG 172 Rubber Roll
- PG 173 EcoFlex
- PG 174 Turf
- PG 176 Custom Flooring

ACTIV FLOORING (15 & 30MM)



The ultimate gym flooring, our Activ rubber tiles are hard-wearing and easy to lay, with optional installation services available to ensure a professional finish.

- Fully compliant with EU chemical Directives (REACH) these tiles are also fire resistance tested to classification EN13501-1:E
- Mould and bacteria resistant
- Recommended to be cleaned with Jordan Gym Floor and Equipment Cleaner - 1L ready mixed (JLFCS) or 1L Concentrated (JLFC1C)
- Choose to design your own floor markings with our customisation service
- 5 year commercial warranty

PRODUCT INFORMATION

JLACTIVBT15 DT	Black Tile 50cm x 50cm x 15mm
JLACTIVBC15 DT	Black Corner 50cm x 50cm x 15mm
JLACTIVBIC15 DT	Black Internal Corner 50cm x 50cm x 15mm
JLACTIVBR15 DT	Black Ramp Edge 50cm x 50cm x 15mm
JLACTIVBT15-CUST	Customisable Black Tile 50cm x 50cm x 15mm (Markings, Numbers, Logos)
JL-EDGE2.7	2.7m Rubber Flooring Edges - BLACK
JLACTIVBT30 DT	Black Tile 50cm x 50cm x 30mm
JLACTIVBC30 DT	Black Corner 50cm x 50cm x 30mm
JLACTIVBIC30 DT	Black Internal Corner 50cm x 50cm x 30mm
JLACTIVBR30 DT	Black Ramp Edge 50cm x 50cm x 30mm
JLACTIVBT30-CUST	Customisable Black Tile 50cm x 50cm x 30mm (Markings, Numbers, Logos)

ACTIV INTERLOCKING FLOORING (15, 30MM)



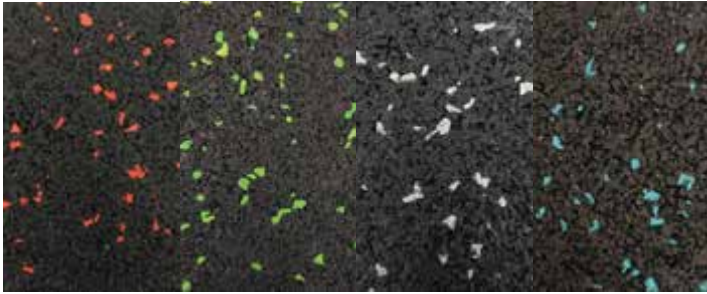
Featuring a jigsaw locking system, these 1 metre squared rubber tiles are ideal for larger surface areas, easier to secure without the use of adhesives.

- Fully compliant with EU chemical Directives (REACH) these tiles are also fire resistance tested to classification EN13501-1:E
- Mould and bacteria resistant
- Recommended to be cleaned with Jordan Gym Floor and Equipment Cleaner - 1L ready mixed (JLFCS) or 1L Concentrated (JLFC1C)
- Easy to lay and fix together with installation also available for a professional finish
- 5 year commercial warranty

PRODUCT INFORMATION

JLACTIVJIGBT10 DT	Black Interlocking Tile 100cm x 100cm x 10mm
JLACTIVJIGBE10 DT	Black Interlocking Edge Tile 100cm x 100cm x 10mm
JLACTIVJIGBC10 DT	Black Interlocking Corner Tile 100cm x 100cm x 10mm
JLACTIVJIGBT15 DT	Black Interlocking Tile 100cm x 100cm x 15mm
JLACTIVJIGBE15 DT	Black Interlocking Edge Tile 100cm x 100cm x 15mm
JLACTIVJIGBC15 DT	Black Interlocking Corner Tile 100cm x 100cm x 15mm
JLACTIVJIGBT20 DT	Black Interlocking Tile 100cm x 100cm x 20 mm
JLACTIVJIGBE20 DT	Black Interlocking Edge Tile 100cm x 100cm x 20 mm
JLACTIVJIGBC20 DT	Black Interlocking Corner Tile 100cm x 100cm x 20 mm

ACTIV FLECK FLOORING (15 & 30MM)



The ultimate gym flooring, our Activ Fleck rubber tiles offer a flare of colour to highlight dedicated workout zones e.g. free weights.

- Fully compliant with EU chemical Directives (REACH) these tiles are also fire resistance tested to classification EN13501-1:E
- Mould and bacteria resistant
- Recommended to be cleaned with Jordan Gym Floor and Equipment Cleaner - 1L ready mixed (JLFC3) or 1L Concentrated (JLFC1C)
- Fleck colours to choose from include green, blue, grey or red
- 5 year commercial warranty

*Lead time applies

FLECK 15MM

PRODUCT INFORMATION

JLACTIVGBT15 DT	Black Tile with grey fleck 50cm x 50cm x 15mm
JLACTIVGBE15 DT	Black Edge with grey fleck 50cm x 50cm x 15mm
JLACTIVGBC15 DT	Black Corner with grey fleck 50cm x 50cm x 15mm
JLACTIVFRBT15 DT	Black Tile with red fleck 50cm x 50cm x 15mm
JLACTIVFRBE15 DT	Black Edge with red fleck 50cm x 50cm x 15mm
JLACTIVFRBC15 DT	Black Corner with red fleck 50cm x 50cm x 15mm
JLACTIVFBBT15 DT	Black Tile with blue fleck 50cm x 50cm x 15mm
JLACTIVFBBE15 DT	Black Edge with blue fleck 50cm x 50cm x 15mm
JLACTIVFBBC15 DT	Black Corner with blue fleck 50cm x 50cm x 15mm
JLACTIVGNBT15 DT	Black Tile with green fleck 50cm x 50cm x 15mm
JLACTIVGNBE15 DT	Black Edge with green fleck 50cm x 50cm x 15mm
JLACTIVGNBC15 DT	Black Corner with green fleck 50cm x 50cm x 15mm

FLECK 30MM

PRODUCT INFORMATION

JLACTIVGBT30 DT	Black Tile with grey fleck 50cm x 50cm x 30mm
JLACTIVGBE30DT	Black Edge with grey fleck 50cm x 50cm x 30mm
JLACTIVGBC30DT	Black Corner with grey fleck 50cm x 50cm x 30mm
JLACTIVFRBT30 DT	Black Tile with red fleck 50cm x 50cm x 30mm
JLACTIVFRBE30 DT	Black Edge with red fleck 50cm x 50cm x 30mm
JLACTIVFRBC30 DT	Black Corner with red fleck 50cm x 50cm x 30mm
JLACTIVFBBT30 DT	Black Tile with blue fleck 50cm x 50cm x 30mm
JLACTIVFBBE30 DT	Black Edge with blue fleck 50cm x 50cm x 30mm
JLACTIVFBBC30 DT	Black Corner with blue fleck 50cm x 50cm x 30mm
JLACTIVGNBT30 DT	Black Tile with green fleck 50cm x 50cm x 30mm
JLACTIVGNBE30 DT	Black Edge with green fleck 50cm x 50cm x 30mm
JLACTIVGNBC30 DT	Black Corner with green fleck 50cm x 50cm x 30mm

EASY-LOCK TATAMI FLOORING (20MM)



Incredibly hard-wearing flooring that's perfect for martial arts and yoga.

- Designed for use without shoes, its ideal for martial arts spaces and dedicated yoga studios
- Air Care system reduces impact on joints
- Constructed from EVA for increased durability, it lasts five times longer than urethane-constructed Tatami panels
- Tiles are 1 metre squared, easy to move and fast to install
- Available to order in six colour to suit your space: red, blue, grey, beige, green and black
- Five-year warranty

PRODUCT INFORMATION

JLELT2	Easy-Lock Tatami (1000mmx1000mmx20mm)
JLELT2E	Wedged Edge
JLELT2C	Wedged Corner
JLELT2ES	Straight Edge
JLELT2CS	Straight Corner

RUBBER ROLL FLOORING (6,8 & 10MM)



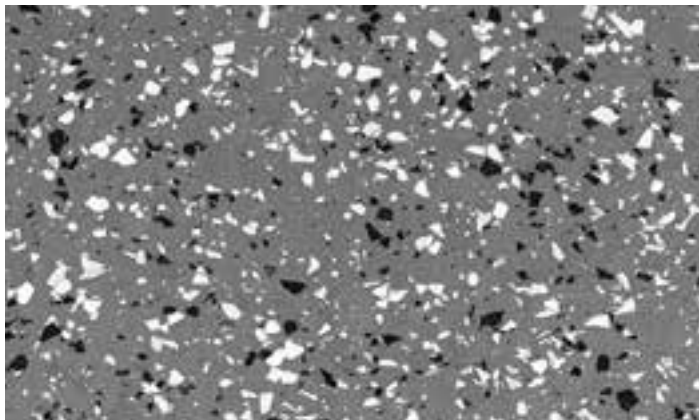
Perfect for warm up / cool down gym areas and studio spaces, this roll out rubber flooring is a great value option to standard rubber tiles.

- A good choice for covering concrete floors
- Wear-resistant and maintenance-free, the flooring is very easy to clean
- Durable rubber surface made up of natural rubber providing high grip surface area for training
- Simple to install requiring glue or double sided tape
- Available in plain black or fleck design colours (green, blue, grey or red)
- Five-year warranty

PRODUCT INFORMATION

JLRRF-6	6mm	Black	1.25m x 10m (12.5sqm)
JLRRF-8	8mm	Black	1.25m x 8m (10sqm)
JLRRF10	10mm	Black	1.25m x 6m (7.5sqm)
JLRRF-6-F	6mm	Black	1.25m x 10m (12.5sqm)
JLRRF-8-F	8mm	Black	1.25m x 8m (10sqm)
JLRRF-10-F	10mm	Black	1.25m x 6m (7.5sqm)
JL-EDGE2.7	2.7m	Black	Rubber Flooring Edges

ECOFLEX RUBBER FLOORING (7MM)



Uniquely made from recycled PaviGOM, this eco-friendly flooring is designed for heavy equipment, indoor cycling, free weights and functional training.

- If you are committed to the environment, this Pro Eco Vulcanized Rubber Flooring is just the ticket
- Made up of quality PaviGOM rubber with compounds that reduce vibrations from heavy equipment
- High density, high grip, non-slip tile
- East to lay, these tiles are 1 metre squared and 7 mm thick and perfect for high footfall areas
- Sweatproof and easy to clean makes this a great quality option

PRODUCT INFORMATION

JLEFRF7 EcoFlex 7mm Rubber Floor (1 tile per sq mtr)

JLEFRFE Straight Edge

JLEFRFC Straight Corner

PG 170
ACTIV FLOORING



TURF

PREMIUM & ECO TURF



Make your mark with the ultimate centre-piece for any facility. Choose from a range of premium and economy sprint tracks or design your ultimate turf track with our customisable option.

- Fully customisable, choose colours and markings to complement your branding and rigorous fitness sessions you'll use it for!
- Made from extremely high density, short fibre makes it durable for indoor and outdoor use
- Easy to install, just use double sided tape or just glue it to the floor
- Installation team available to ensure track laid perfectly to ensure longevity
- Great for prowler and sled work to encourage full body workouts

PRODUCT INFORMATION

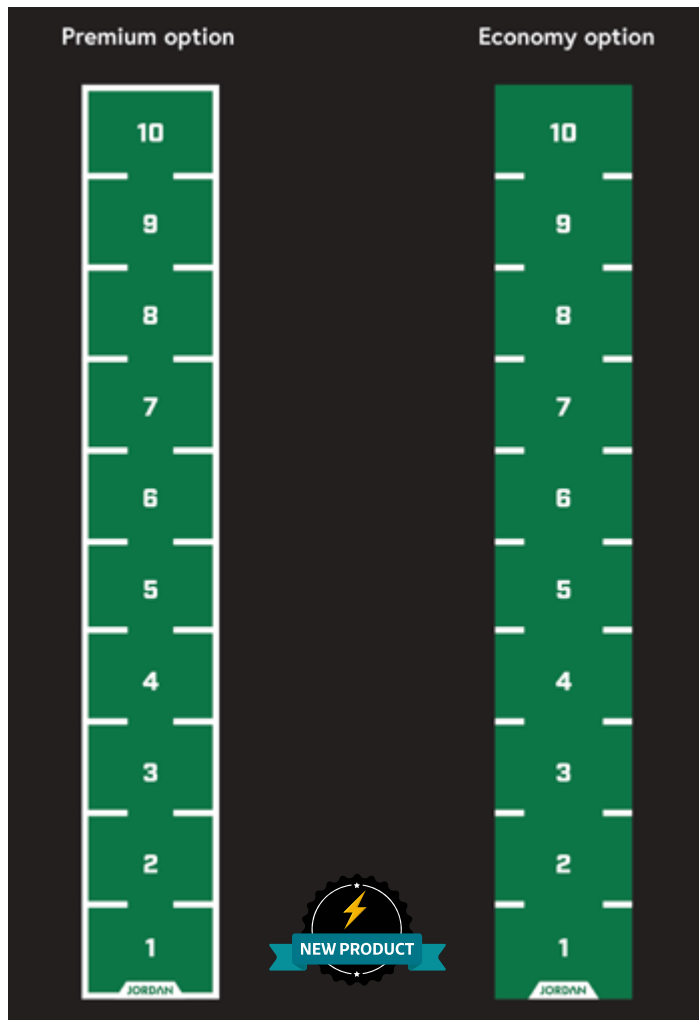
JLST10-PRE JORDAN Premium 1.5m x 10m Sprint Track with White Border, Metre Markings & Numbers (1-10)

JLST15-PRE JORDAN Premium 1.5m x 15m Sprint Track with White Border, Metre Markings & Numbers (1-10)

JLST10-PREP JORDAN Premium 1.5m x 10m Sprint Track Plain Green

JLST15-PREP JORDAN Premium 1.5m x 15m Sprint Track Plain Green

JLST-PRE-CUS JORDAN Premium Custom Sprint Track



PRODUCT INFORMATION

JLST10-ECO JORDAN Economy 1.5m x 10m Sprint Track with Metre Markings & Numbers (1-10)

JLST15-ECO JORDAN Economy 1.5m x 15m Sprint Track with Metre Markings & Numbers (1-10)

JLST10-ECOP JORDAN Economy 1.5m x 10m Sprint Track Plain Green

JLST15-ECOP JORDAN Economy 1.5m x 15m Sprint Track Plain Green

JLST-ECO-CUS JORDAN Economy Custom Sprint Track

CUSTOM BRANDED FLOORING & TURF

We offer the opportunity for Boutiques, Gyms and Leisure Centres to design their functional flooring space to suit a range of fitness programming.

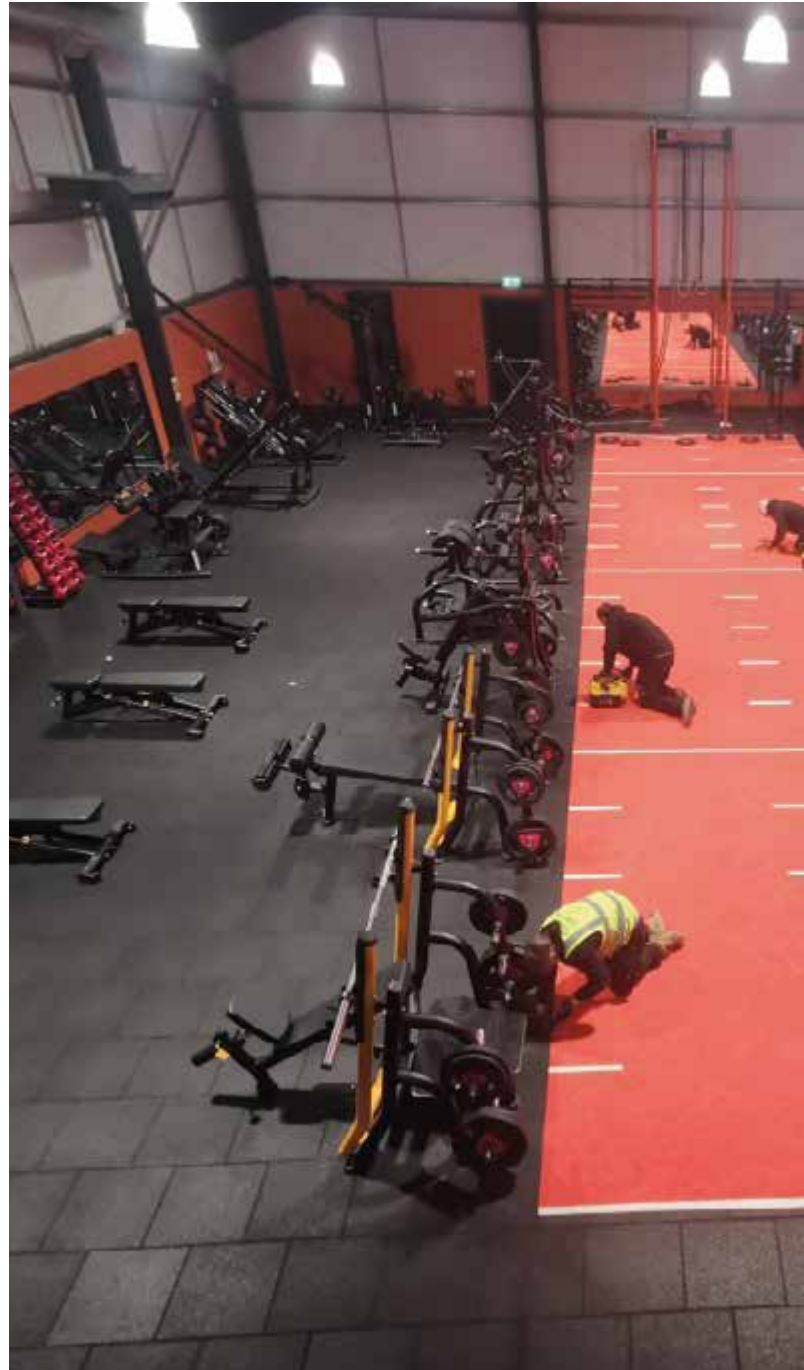
Choose to add floor markings (numbers, dots, lines, grids, a compass and even your logo) to enhance your Activ flooring, and tailor your group exercise and gym offering so enhance your brand.

Not only can we customise your rubber tiles, you can create your own branded sprint track and turf area with our Premium Turf offering.

Contact our dedicated customer sales team for a quote and design mock ups:

Call: +44 (0) 1553 763285

Email: sales@jordanfitness.co.uk





Having taken over the facilities in Cardiff it was decided we needed an upgrade to flooring of the main Gym and new equipment for a functional training area. We had already used Jordan products and flooring for our facility in Bristol and were very impressed. Once again they did not let us down and the new gym flooring and matting looks fantastic, I would not hesitate to recommend Jordan to any other business."

Ali Drury
Riverside Leisure Club
Cardiff

SPEED & AGILITY

PG 178 SPEED & AGILITY

- PG 180 Power Drag Bag
- PG 180 Juke 360
- PG 181 Quick Hurdles & Cones
- PG 181 Speed Ladder
- PG 182 Quick Puncher
- PG 182 Power Chute
- PG 183 BlazePods



PG 181
SPEED LADDER

PG 183
BLAZEPODS

POWER DRAG BAG



Take your sprint power to another level with this highly versatile training tool.

- Power Drag Bag adds resistance to sprint and drill work to build strength and explosive power
- Adjustable and comfortable padded vest attaches to an adjustable tether and heavy-duty weights bag
- Weights bag features integrated handles for upper-body training
- 10 drill cards for smashing your sprint technique and speed
- The durable Power Drag Bag can be used indoors and out. If used indoors, it won't mark wooden flooring
- One-year warranty

PRODUCT INFORMATION

JL-PDB Power Drag Bag

JUKE 360



Build speed and strength plus improve sprint economy with this impressive stretch cord/adjustable belt combo.

- Build explosive power and increase sprint efficiency with this fantastic, durable stretch cord
- Your training partner or coach holds one end of the 8ft stretch cord that extends to 20ft. The other is connected to you via the adjustable belt with free sled ring for multi-directional movement
- Sprint against resistance or practice footwork drills for faster, more powerful running
- 10 drill cards for smashing your sprint technique and speed
- Great for athletics and team sports
- One-year warranty

PRODUCT INFORMATION

JL-J360 Juke 360
