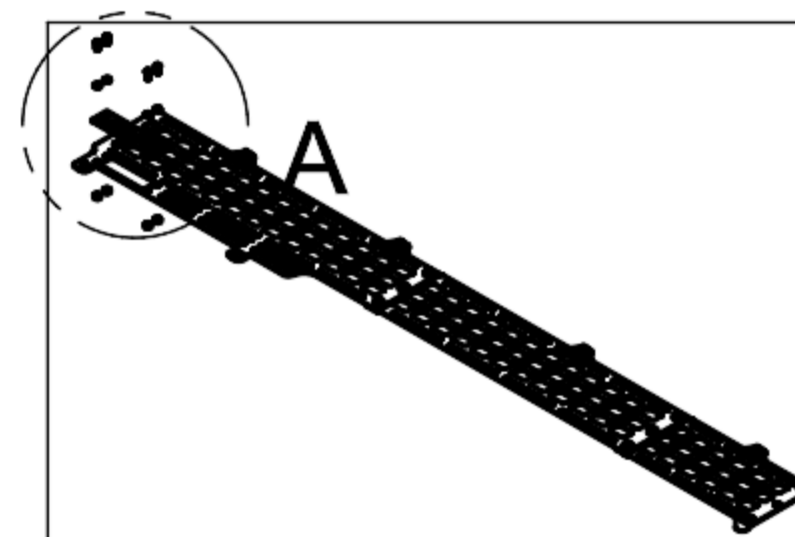


PARTS ASSEMBLY LIST			
ITEM	DESCRIPTION	QUANTITY	TOOLS REQ'D
BAG: 1	1/4" SOCKET CAP BOLT	4	5/32 Allen Head
BAG: 2	1/4" LOCKWASHER	4	n/a
BAG: 3	1/4" NUT	4	7/16 Wrench
BAG: 12	AOD BOTTLE OPENER	1	n/a

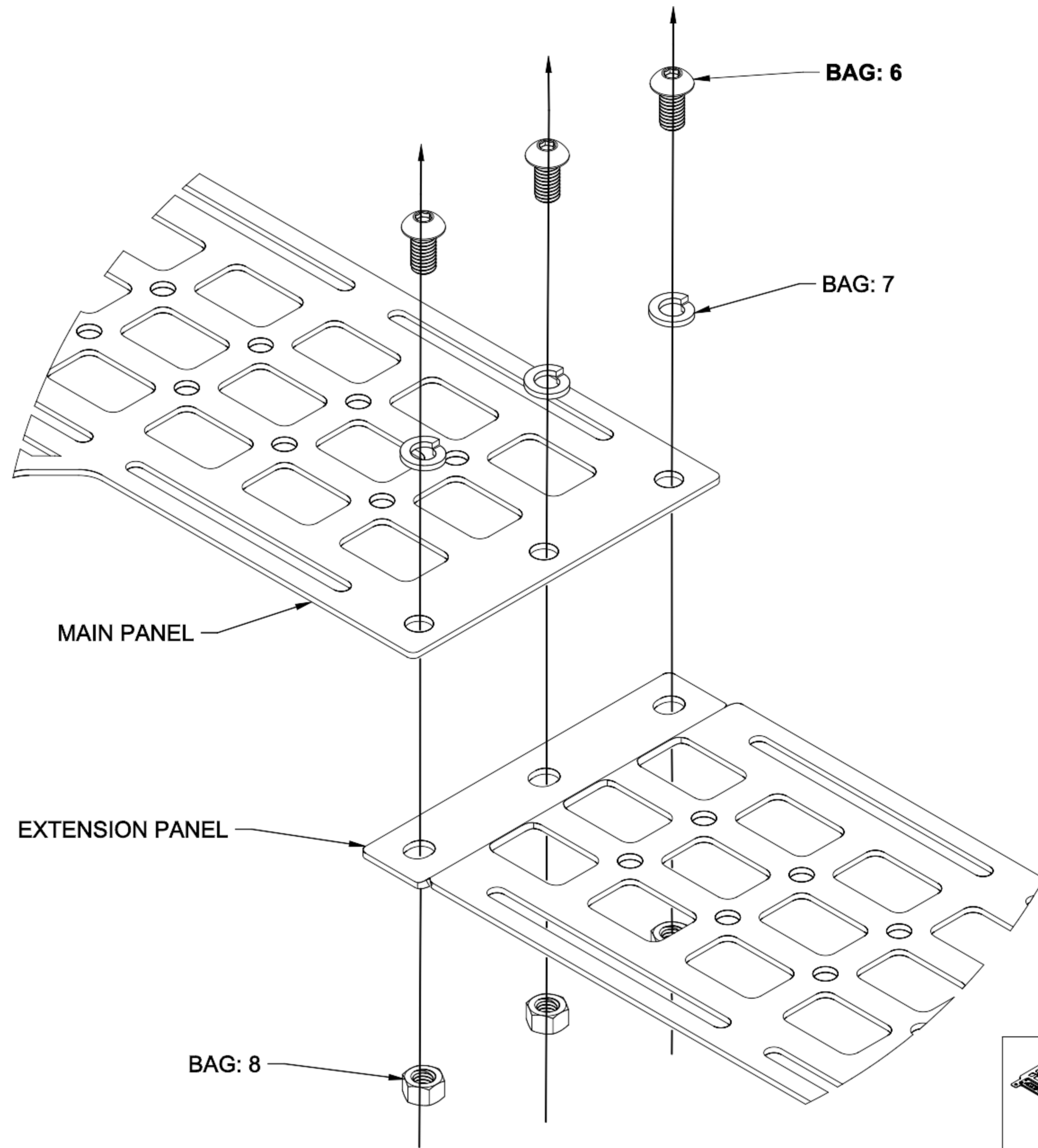
Assembly Notes:

- 1) Assemble hardware in the orientation shown.
- 2) Using a 5/32 Allen key, tighten the 1/4" socket cap bolt. A 7/16" wrench will be required to hold the nuts on the backside.

DETAIL A  
SCALE 1:2



PROJECT			
<b>ASSEMBLY INSTRUCTIONS</b>			
TITLE			
<b>STEP: 1</b>			
<b>Assembling AOD bottle Opener</b>			
APPROVED	SIZE	CODE	DWG NO
CHECKED	B		
DRAWN	SCALE 1:22	WEIGHT	SHEET 1/1



**DETAIL A**  
**SCALE 1:2**

PARTS ASSEMBLY LIST			
ITEM	DESCRIPTION	QUANTITY	TOOLS REQ'D
BAG: 6	3/8"x3/4" Socket Cap Bolt	3	7/32 Allen Head
BAG: 7	3/8 Lockwasher	3	n/a
BAG: 8	3/8" Nut	3	9/16 Wrench
Extension Panel	Extension	1	n/a

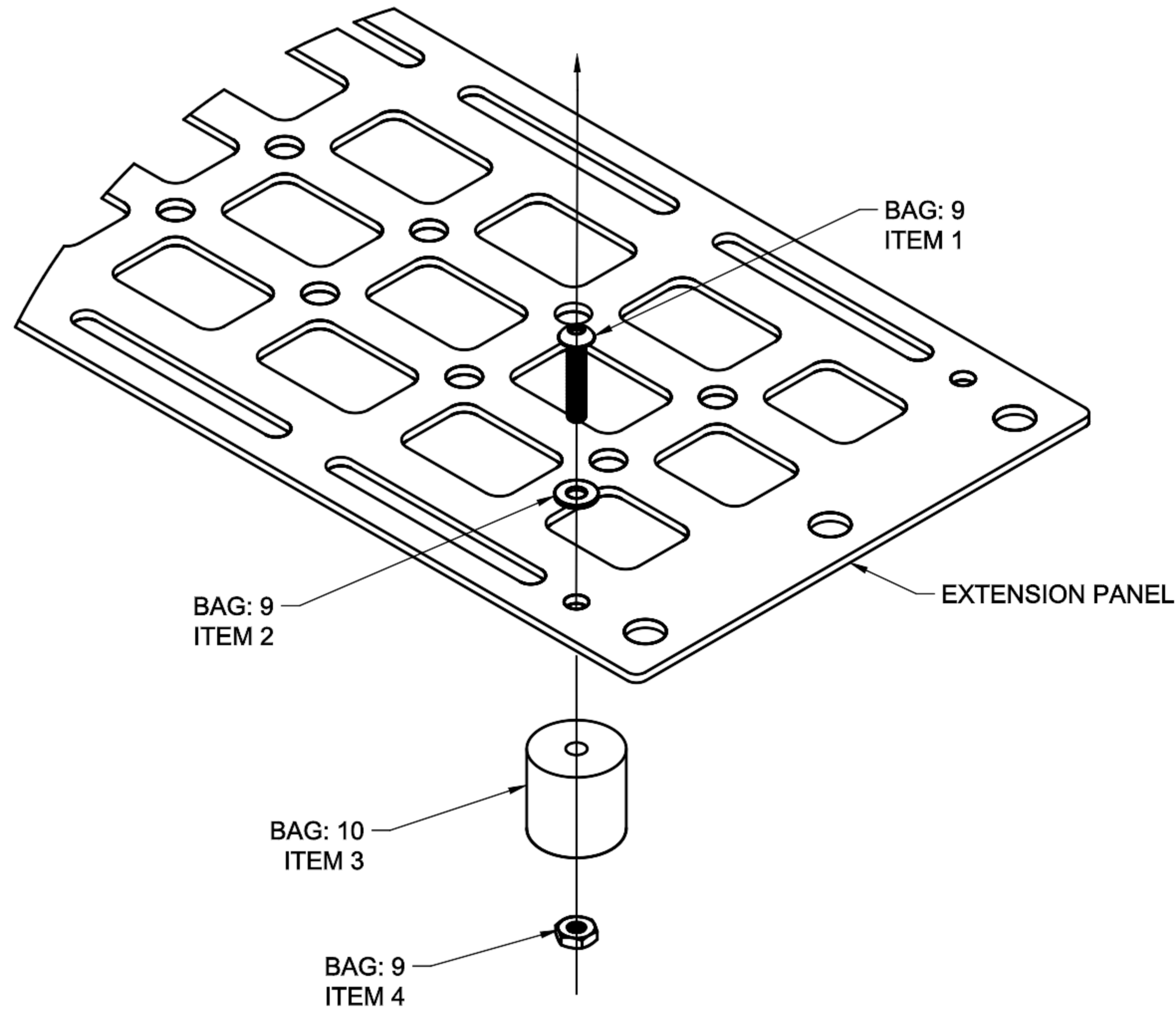
**Assembly Notes:**

- 1) Place Main Panel on top of Extension panel.
- 2) Assemble hardware in the orientation shown.
- 3) Tighten the 3/8" Socket Cap Bolts using a 7/32 Allen Key. A 9/16 wrench will be required to hold the nuts on the backside

**For Long Bed installations:**

- 1) repeat the above steps with the additional panel provided.

	PROJECT			
	<b>ASSEMBLY INSTRUCTIONS</b>			
	TITLE			
	<b>STEP: 2</b>			
				REV
APPROVED		SIZE	CODE	DWG NO
CHECKED		B		
DRAWN		SCALE 1:22	WEIGHT	SHEET 1/1

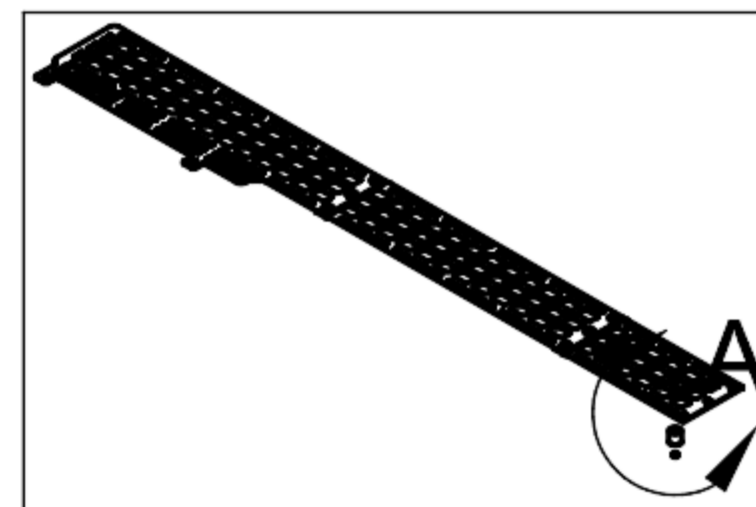


**DETAIL A**  
**SCALE 1:1.5**

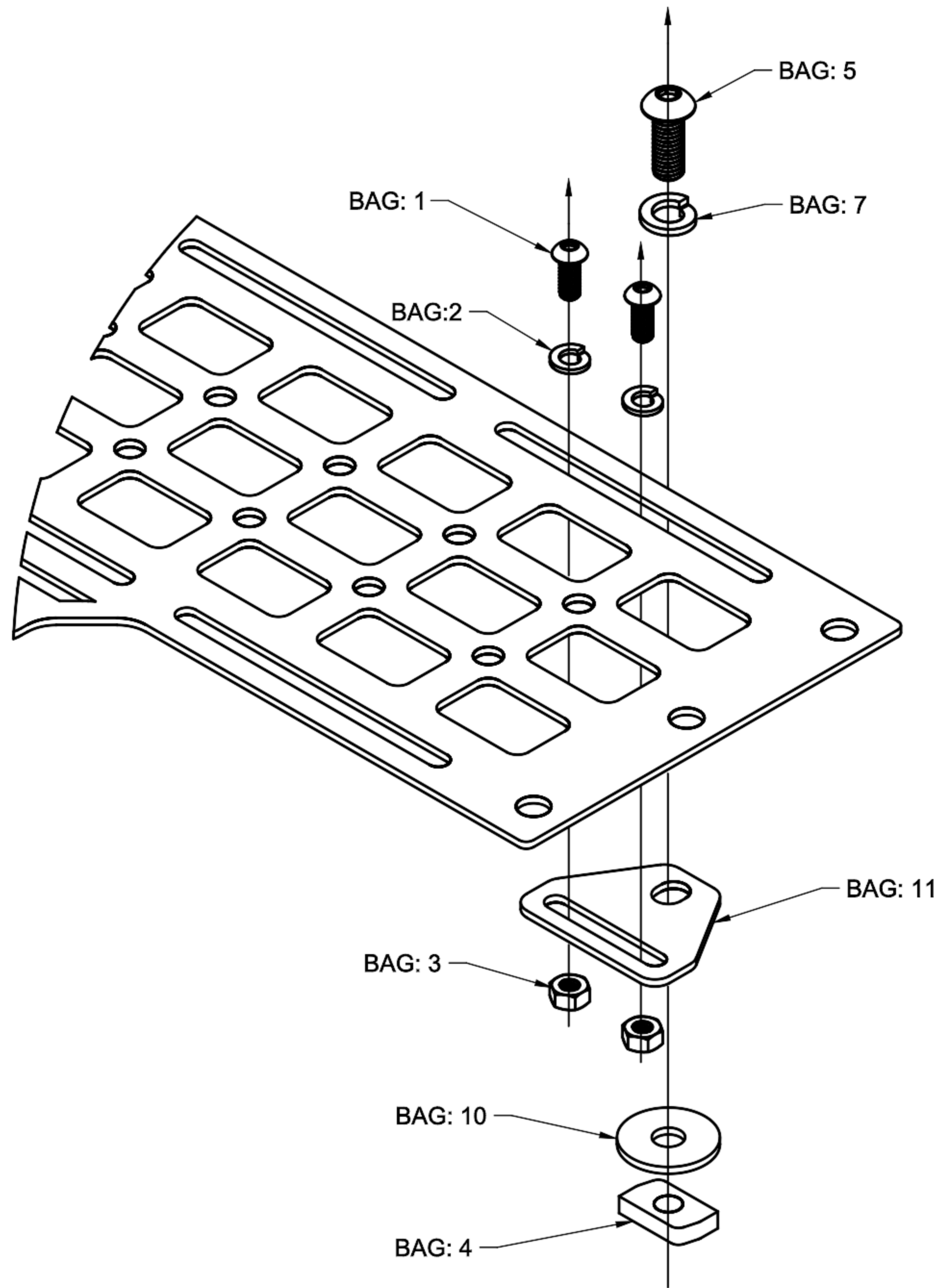
PARTS ASSEMBLY LIST			
ITEM	DESCRIPTION	QUANTITY	TOOLS REQ'D
BAG: 9 - ITEM 1	#10 Socket Cap Bolt	1	3/32 Allen Head
BAG: 9 - ITEM 2	#10 Washer	1	n/a
BAG: 9 - ITEM 3	Rubber Vibration Bushing	1	n/a
BAG: 9 - ITEM 4	#10 Nut	1	11/32 Wrench
Extension Panel	Extension	1	n/a

**Assembly Notes:**

- 1) Press the Nut into the recessed hole on the Rubber Vibration Bushing.
- 2) Assemble remaining hardware in the orientation shown.
- 3) Tighten the #10 Socket Cap bolt using a 3/32 Allen Key. Pressing the Nut into the Rubber Vibration Bushing will hold the nut from spinning.



PROJECT			
<b>ASSEMBLY INSTRUCTIONS</b>			
TITLE			
<b>STEP: 3</b>			
<b>Assembling Vibration Bushing</b>			
APPROVED	SIZE	CODE	DWG NO
CHECKED	B		
DRAWN	SCALE 1:22	WEIGHT	SHEET 1/1
			REV



DETAIL A  
SCALE 1:1.75

PARTS ASSEMBLY LIST			
ITEM	DESCRIPTION	QUANTITY	TOOLS REQ'D
BAG: 1	1/4" Socket Cap Bolt	2	5/32 Allen Head
BAG: 2	1/4" Lockwasher	2	n/a
BAG: 3	1/4" Nut	2	7/16 Wrench
BAG: 4	T Slot Nut	1	n/a
BAG: 5	3/8x3/4 Socket Cap Bolt	1	7/32 Wrench
BAG: 7	3/8" Lockwasher	1	n/a
BAG: 10	Rubber Vibration Washer	1	n/a
BAG: 11	Mount Bracket	1	n/a

\*Note\* These quantities are for one mount bracket assembly. There are multiple assemblies along the top rail of your mount panel system.

Assembly notes:

1) place the mount bracket on the backside of the panel. Align the holes and fasten together using the 1/4" hardware located in Bag 1, 2, and 3.

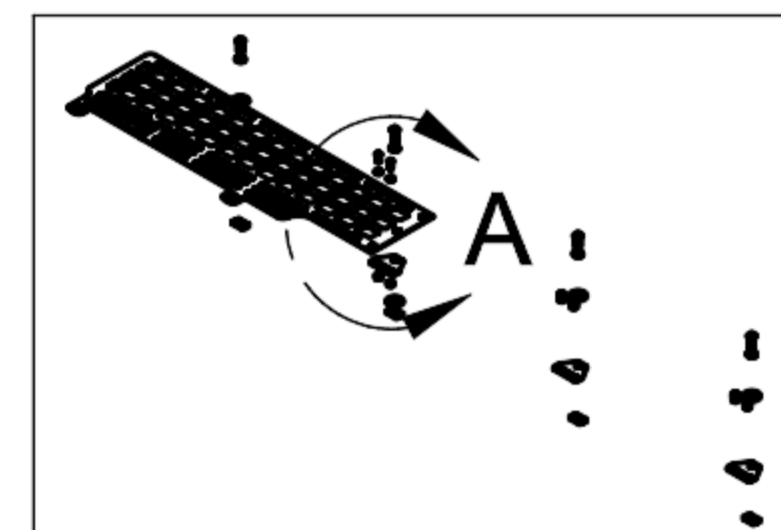
2) Assemble the remaining hardware in the orientation shown.

3) Thread the T slot nut, onto the 3/8" Socket Cap bolt. Only thread the nut a few turns, leaving a space between the nut, and the rubber washer. Rotate the nut into the Horizontal position before placing in the T slot mount Rail.

3a) This will allow the nut to properly drop into the T slot mount rail in the bed of your truck.



Completed Mount Bracket  
Ref: 3a

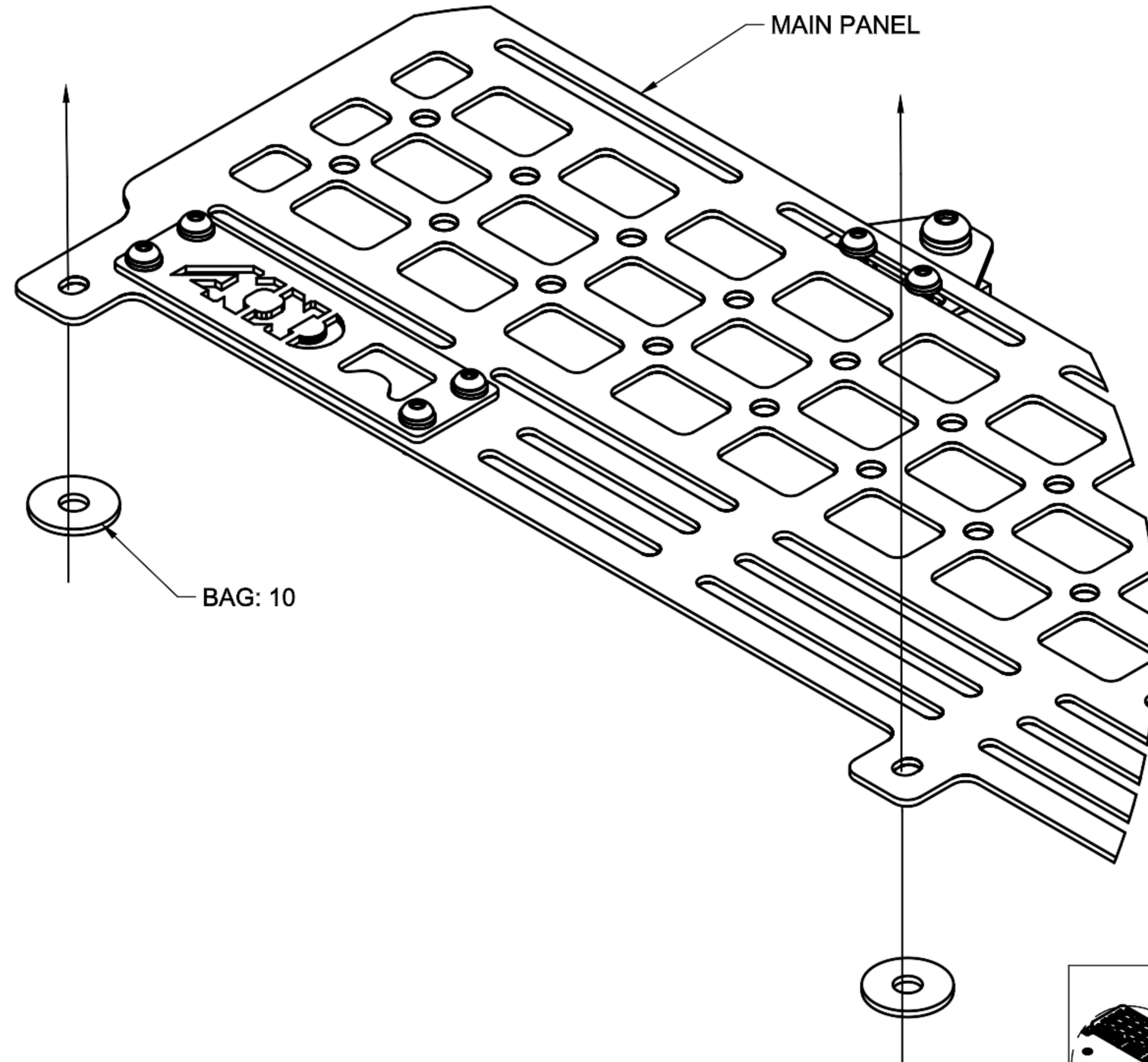


PROJECT  
**ASSEMBLY INSTRUCTIONS**

TITLE  
**STEP: 4**  
**Assembling Mount Brackets**

APPROVED	SIZE	CODE	DWG NO	REV
CHECKED	B			
DRAWN	SCALE 1:22	WEIGHT	SHEET 1/1	

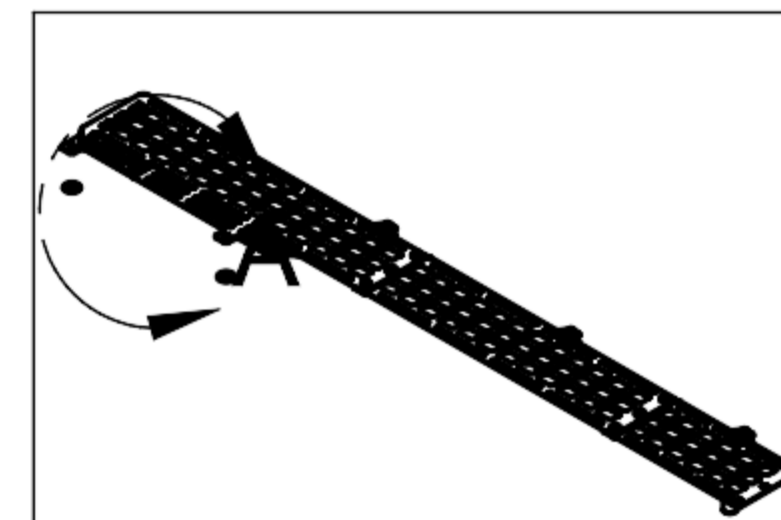
PARTS ASSEMBLY LIST			
ITEM	DESCRIPTION	QUANTITY	TOOLS REQ'D
BAG: 10	Rubber Washers	2	n/a
MAIN PANEL	Main Panel	1	n/a



**Assembly Notes:**

- 1) Remove the existing storage bin torx bolts using a T30 hex.
- 2) Align panel over the storage bin, and slide the rubber washers in place. Re-install torx bolts.

**DETAIL A  
SCALE 1:2**



PROJECT			
<b>ASSEMBLY INSTRUCTIONS</b>			
TITLE			
<b>STEP: 5</b>			
<b>Assembling Rubber Vibration Washers</b>			
APPROVED	SIZE	CODE	DWG NO
CHECKED	B		
DRAWN	SCALE 1:22	WEIGHT	SHEET 1/1
			REV