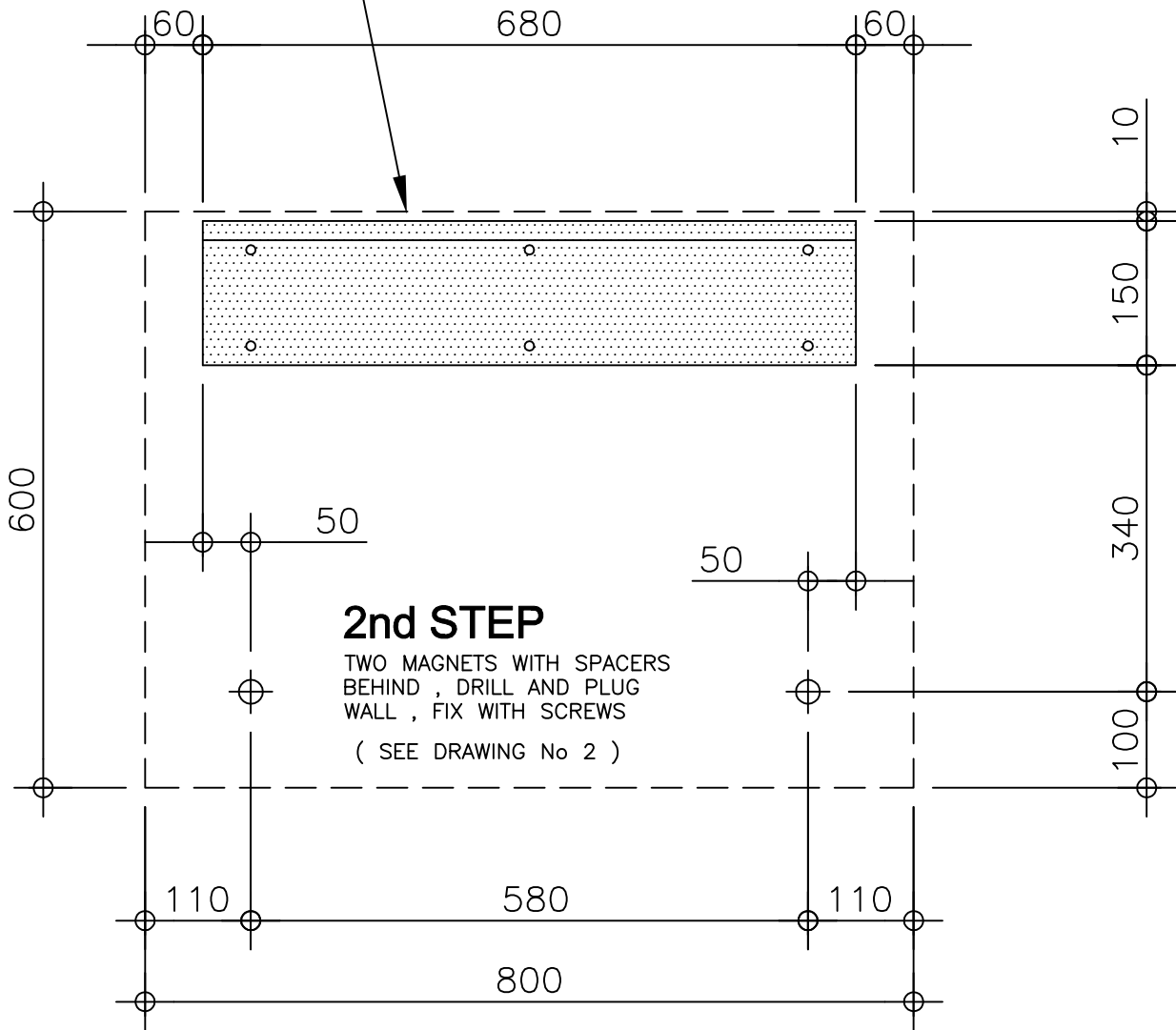


# 1st STEP

METAL WALL BRACKET , LEVEL  
AND FIX WITH SIX SCREWS INTO  
SUITABLE WALL PLUGS

FLANGE ON TOP AND POINTING  
AWAY FROM WALL

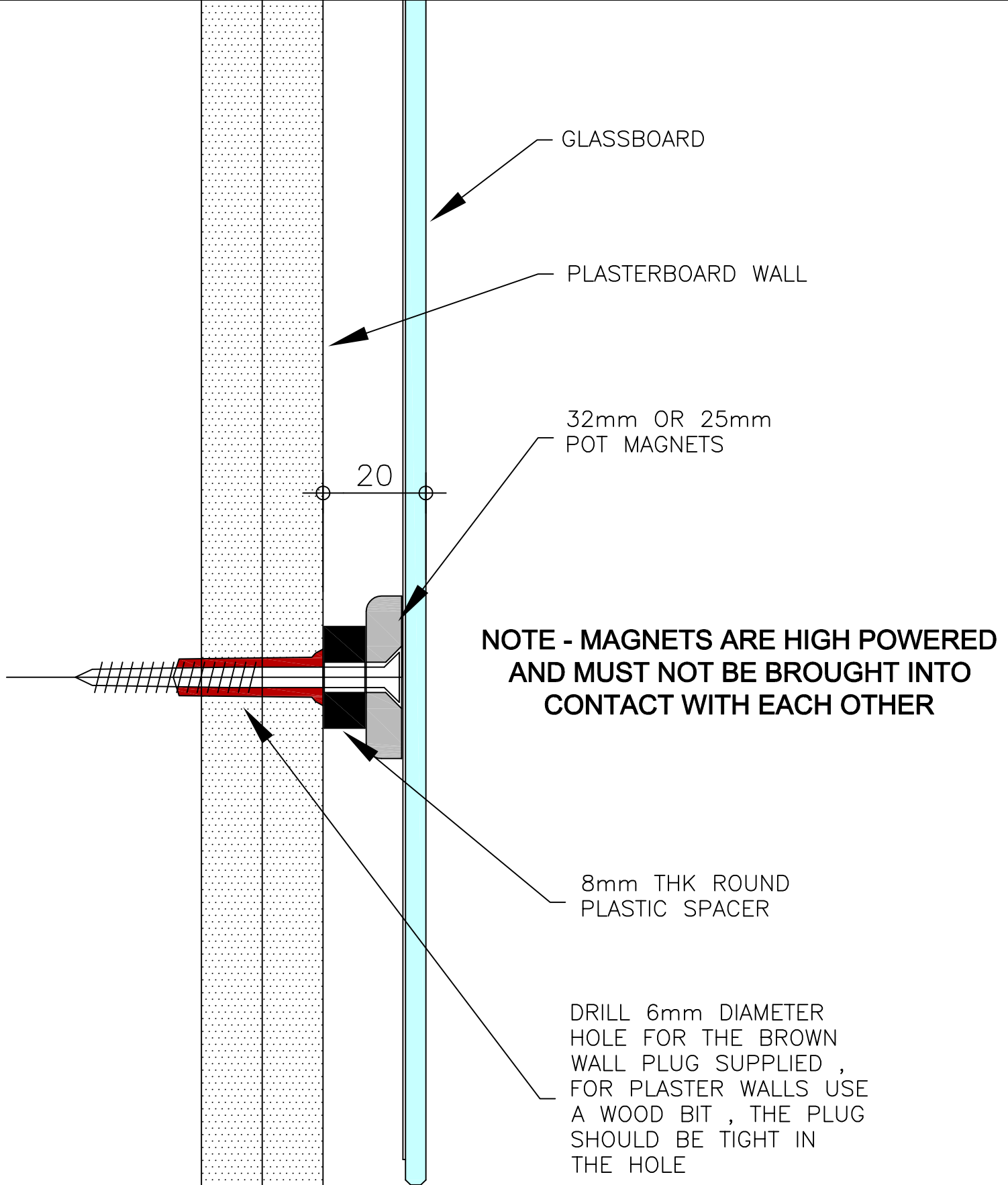


# 2nd STEP

TWO MAGNETS WITH SPACERS  
BEHIND , DRILL AND PLUG  
WALL , FIX WITH SCREWS

( SEE DRAWING No 2 )

# 800mmW X 600mmH



**NOTE - this brown plug may not be suitable for all wall types**

**Onglass Products Ltd**

**Glass Boards Fitting Instructions - Drawing 2**