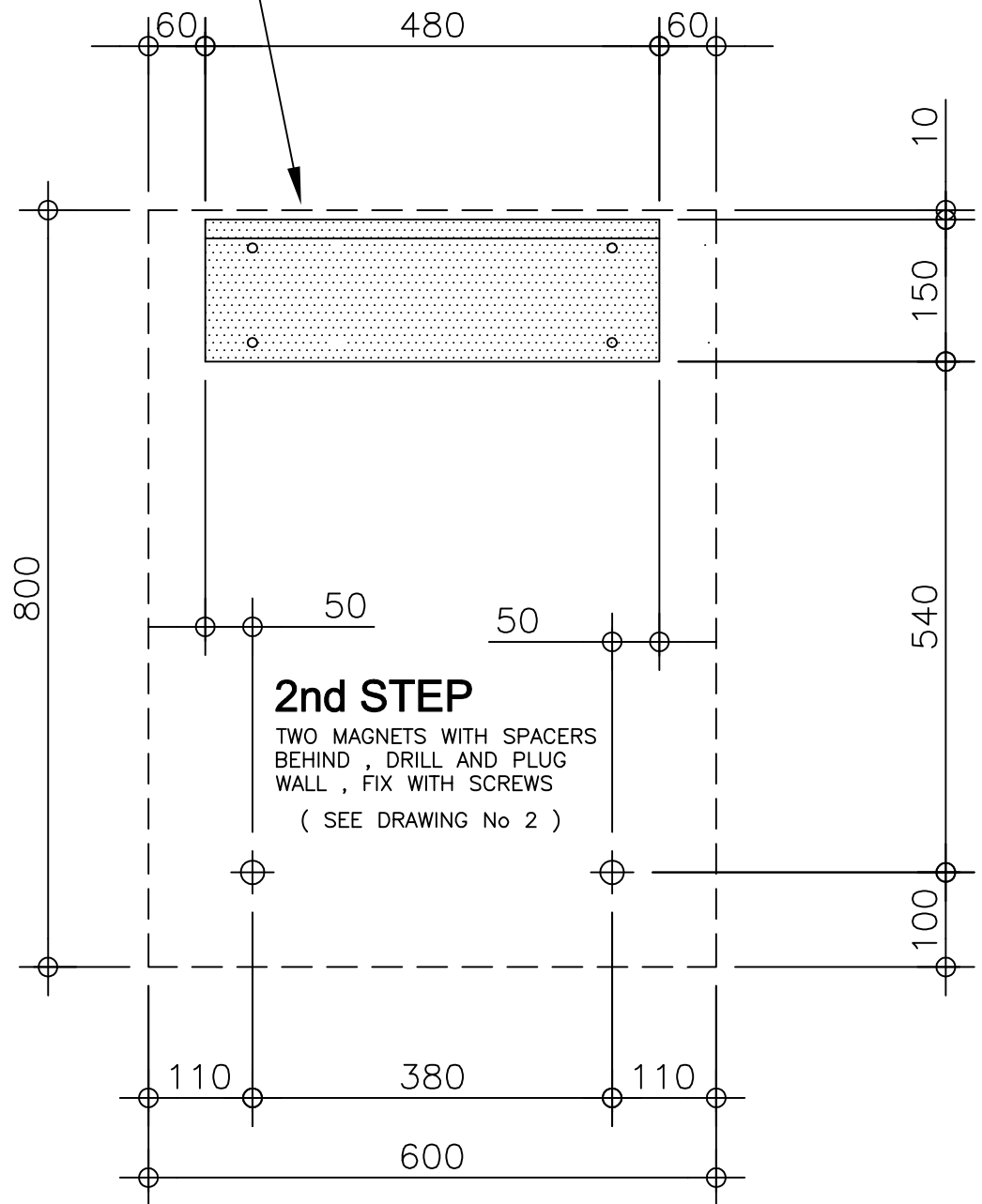


1st STEP

METAL WALL BRACKET , LEVEL
AND FIX WITH FOUR SCREWS
INTO SUITABLE WALL PLUGS

FLANGE ON TOP AND POINTING
AWAY FROM WALL

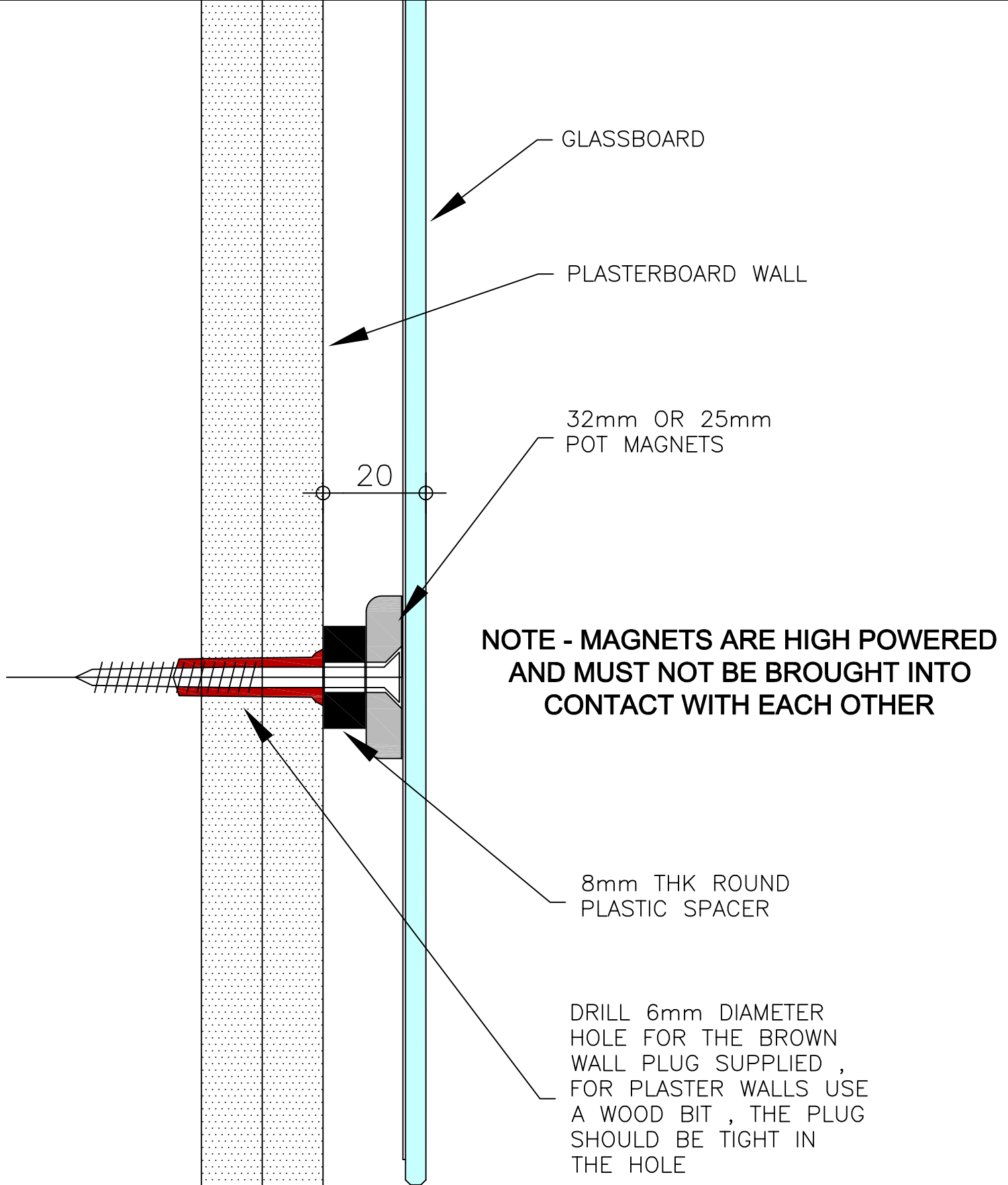


2nd STEP

TWO MAGNETS WITH SPACERS
BEHIND , DRILL AND PLUG
WALL , FIX WITH SCREWS

(SEE DRAWING No 2)

600mmW X 800mmH



**NOTE - this brown plug may not be suitable
for all wall types**

Onglass Products Ltd

Glass Boards Fitting Instructions - Drawing 2