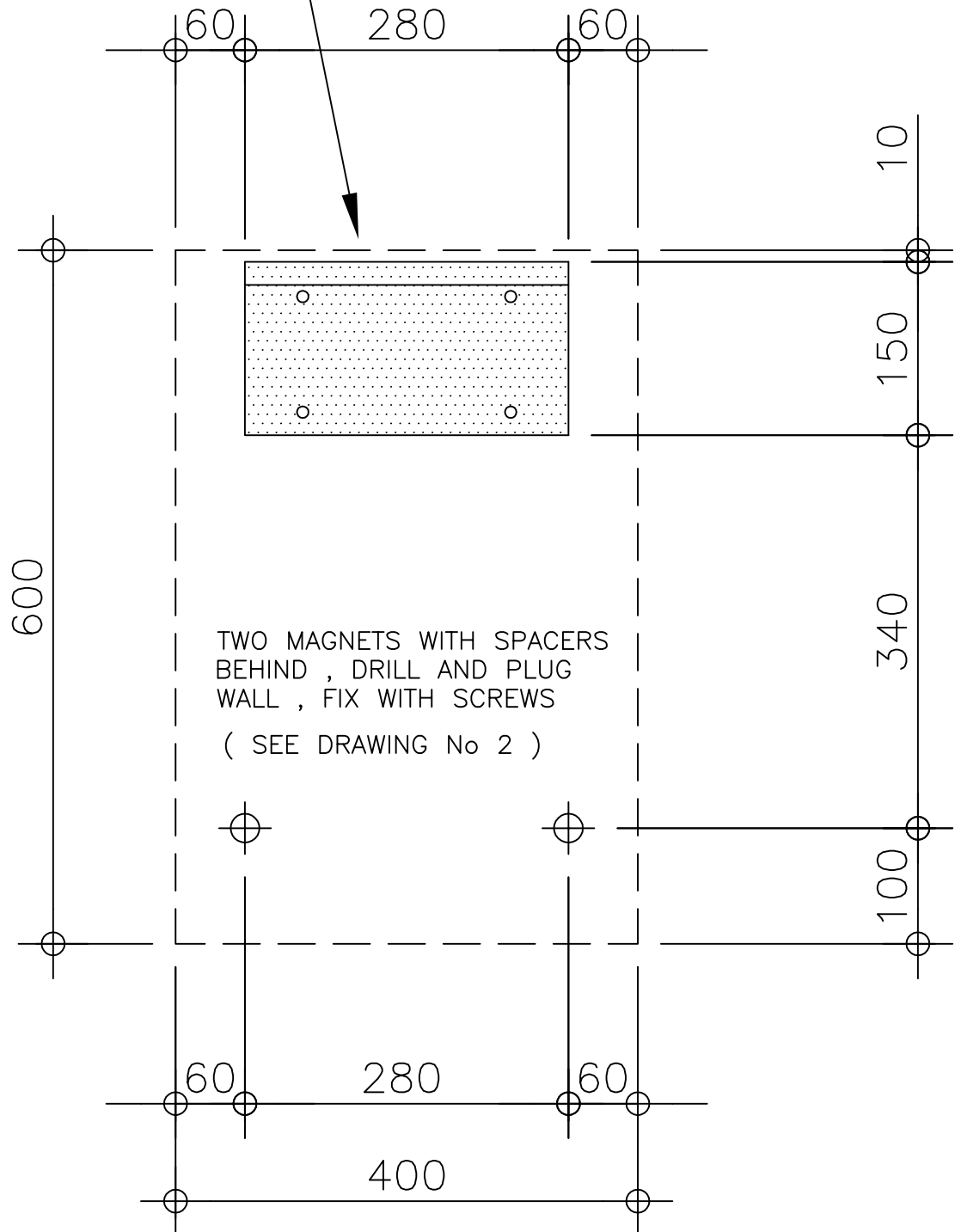


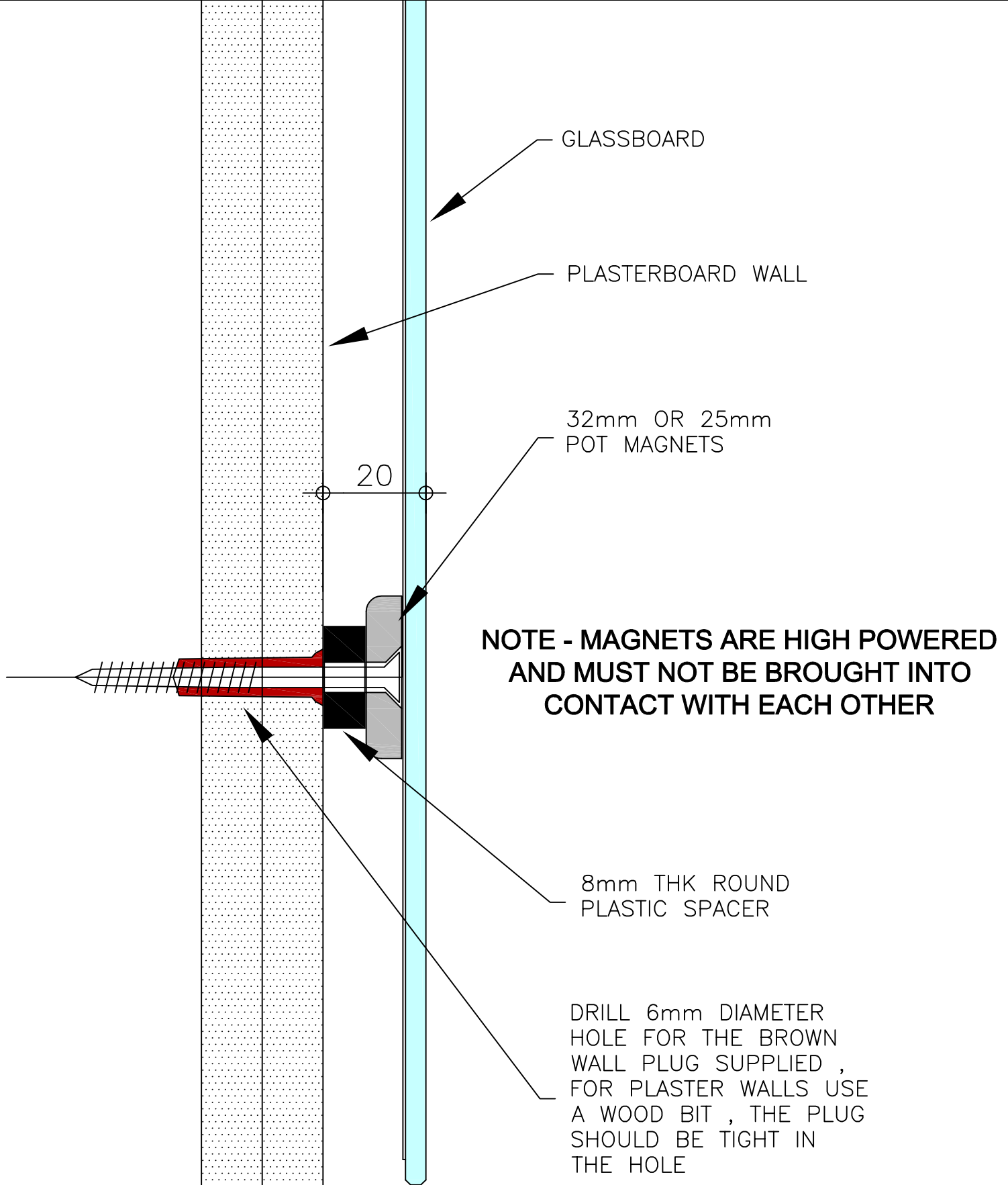
1st STEP

METAL WALL BRACKET , LEVEL
AND FIX WITH FOUR SCREWS
INTO SUITABLE WALL PLUGS

FLANGE ON TOP AND POINTING
AWAY FROM WALL



400mmW X 600mmH



**NOTE - this brown plug may not be suitable
for all wall types**

Onglass Products Ltd

Glass Boards Fitting Instructions - Drawing 2