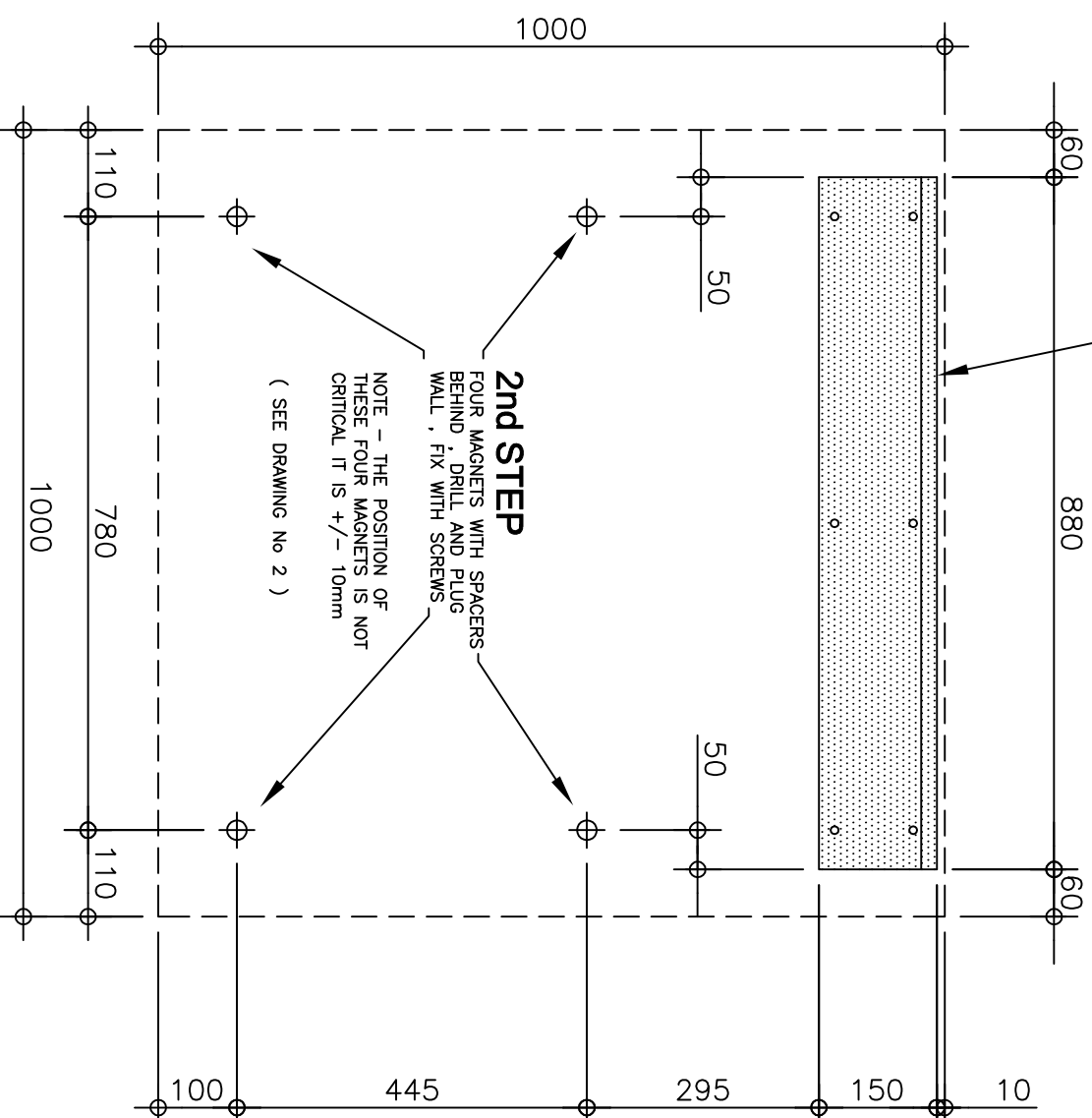


1st STEP

METAL WALL BRACKET , LEVEL
AND FIX WITH SIX SCREWS INTO
SUITABLE WALL PLUGS
FLANGE ON TOP AND POINTING
AWAY FROM WALL

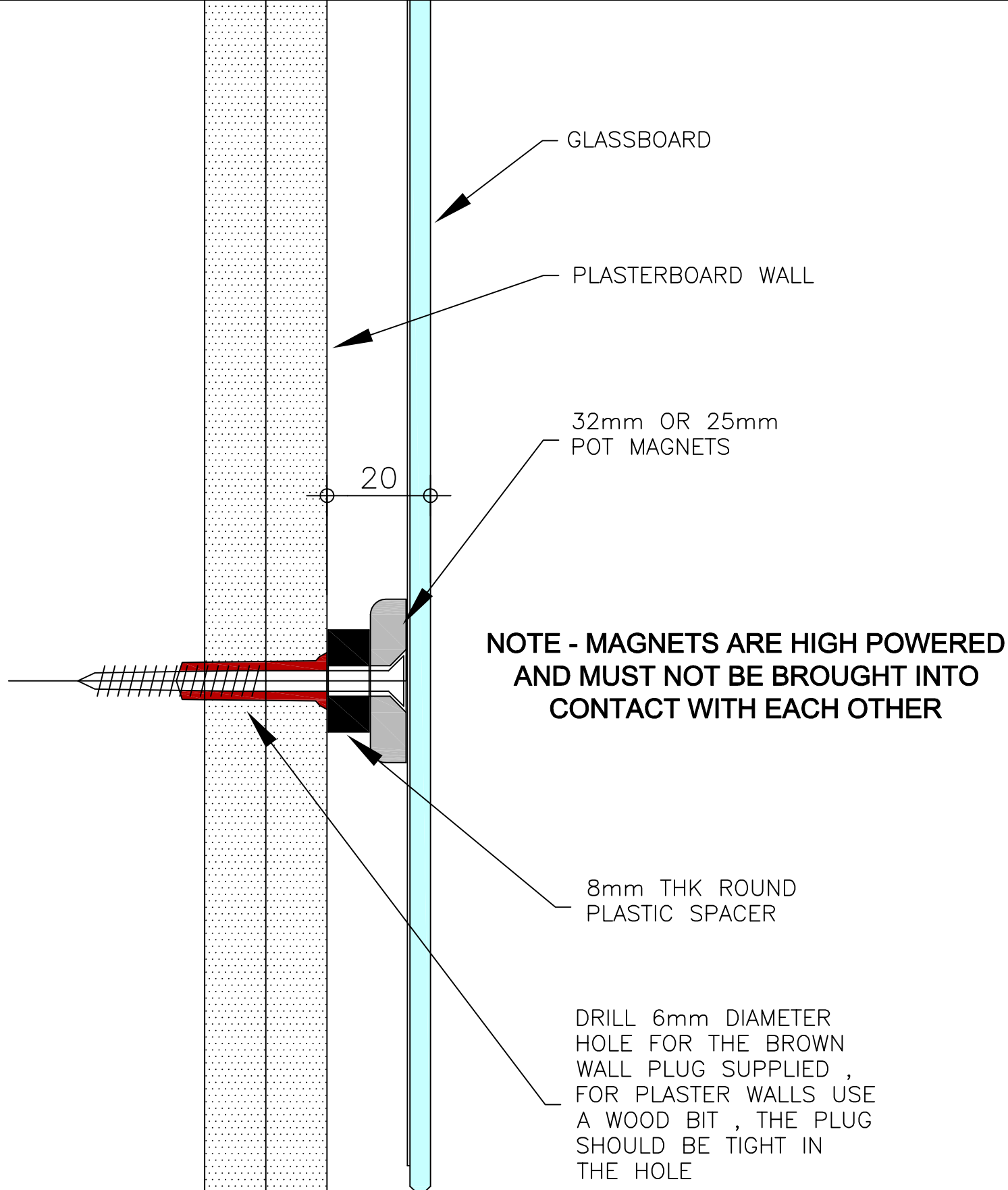


Onglass Products Ltd

Glass Boards Fitting Instructions - Drawing 1

1000mmW X 1000mmH

FITTINGS D



**NOTE - this brown plug may not be suitable
for all wall types**

Onglass Products Ltd

Glass Boards Fitting Instructions - Drawing 2