



# Club Scrap® Special Edition Page Kit

## Plaid About You

To view a complete page assembly video tutorial, phone scan the QR code at right, click on, or carefully enter the following link: <https://youtu.be/PwRYfKdgabM>



### Materials and Tools:

- ❑ *Plaid About You* Special Edition Page Kit
- ❑ 12" Paper Trimmer
- ❑ Accordion Pocket File
- ❑ ScorPal
- ❑ Adhesive
- ❑ Tape
- ❑ Foam Adhesive Tape
- ❑ 3x14" CS® Grid Ruler
- ❑ Scissors
- ❑ CS® Bookbinding Glue
- ❑ Needle-tipped Glue Applicator
- ❑ Staples and Stapler
- ❑ Slot Punch (Optional)
- ❑ Green Embossing Powder, Embossing Ink and Heat Tool (Optional)
- ❑ (3) Mini Brads (Optional)

**LB** = Left Base Page  
**RB** = Right Base Page

### Measurement Conversions:

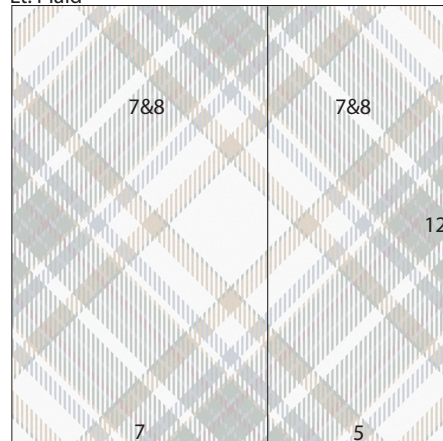
- .25 = 1/4"
- .5 = 1/2"
- .75 = 3/4"

### Preparation:

Trim the papers and printed cutaparts as indicated by the written instructions. While trimming, distribute the pieces to a pile or file designated for each double page spread as referenced in the diagram.

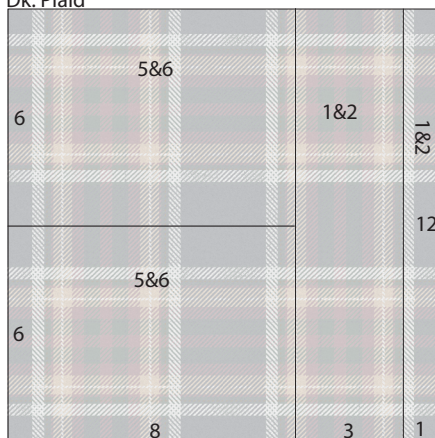
Pre-cut photo mats are not included in this collection. Instead, four additional plain papers are provided.

Lt. Plaid



1. Trim one Lt. Plaid Print at 7".

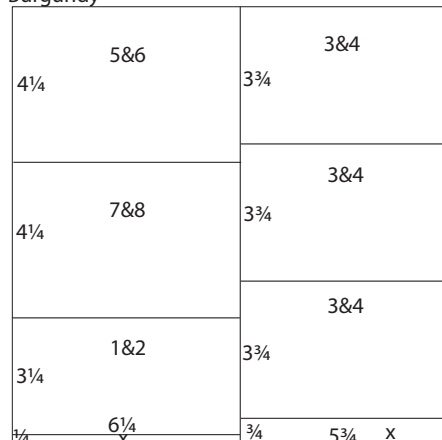
Dk. Plaid



2. Cut one Dk. Plaid Print at 11 and 8".

Rotate and cut the 8x12 at 6".

Burgundy

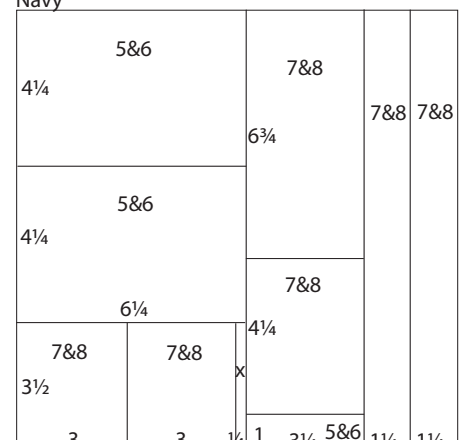


3. Trim one Burgundy at 6.25".

Rotate and cut the 6.25x12 at 11.75, 8.5 and 4.25".

Trim the 5.75x12 at 11.25, 7.5 and 3.75".

Navy



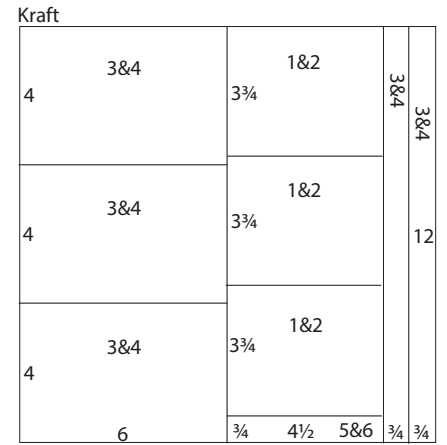
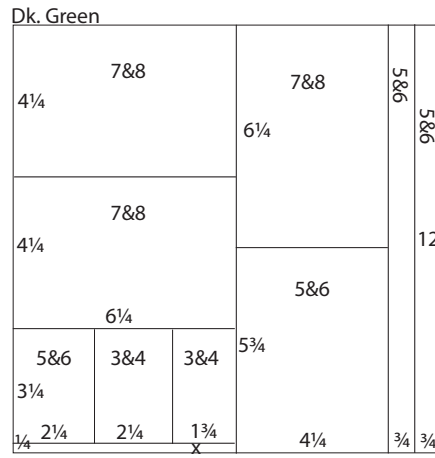
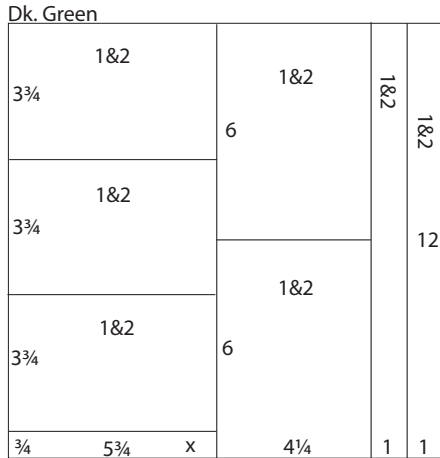
4. Cut one Navy at 10.75, 9.5 and 6.25".

Rotate and trim the 6.25x12 at 8.5 and 4.25".

Cut the 3.5x6.25 at 6 and 3".

Trim the 3.25x12 at 11 and 6.75".





5. Trim one Dk. Green at 11, 10 and 5.75".

Rotate and cut the 5.75x12 at 11.25, 7.5 and 3.75".

Trim the 4.25x12 at 6".

6. Cut one Dk. Green at 11.25, 10.5 and 6.25".

Rotate and trim the 6.25x12 at 11.75, 8.5 and 4.25".

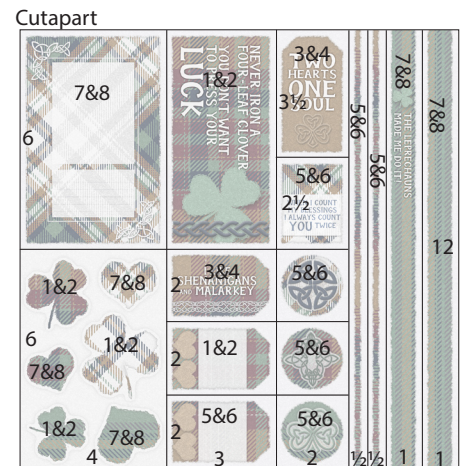
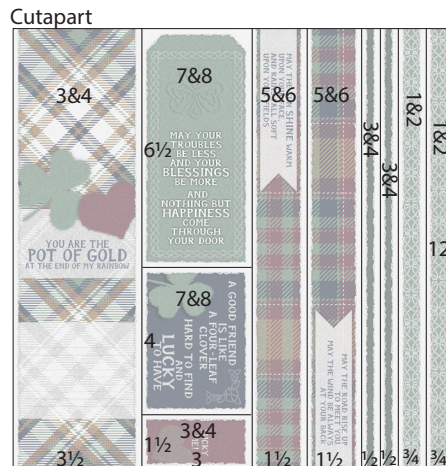
Cut the 3.25x6.25 at 4.5 and 2.25".

Trim the 4.25x12 at 6.25".

7. Trim one Kraft at 11.25, 10.5 and 6".

Rotate and cut the 6x12 at 8 and 4".

Trim the 4.5x12 at 11.25, 7.5 and 3.75".



8. Cut one White at 10.25 and 6.25".

Rotate and trim the 6.25x12 at 11.75, 8.5 and 4.25".

Trim the 3.25x6.25 at 5.5 and 2.75".

Cut the 4x12 at 6".

9. Prior to trimming, remove approximately 1/8" from the perimeter of the cutpart. Use the intersecting marks on each corner as a cutting guide.

Trim at 11.25, 10.5, 10, 9.5, 8, 6.5 and 3.5".

Cut the 3x12 at 10.5 and 6.5".

10. Prior to trimming, remove approximately 1/8" from the perimeter of the cutpart. Use the intersecting marks on each corner as a cutting guide.

Cut at 11, 10, 9.5, 9, 7 and 4".

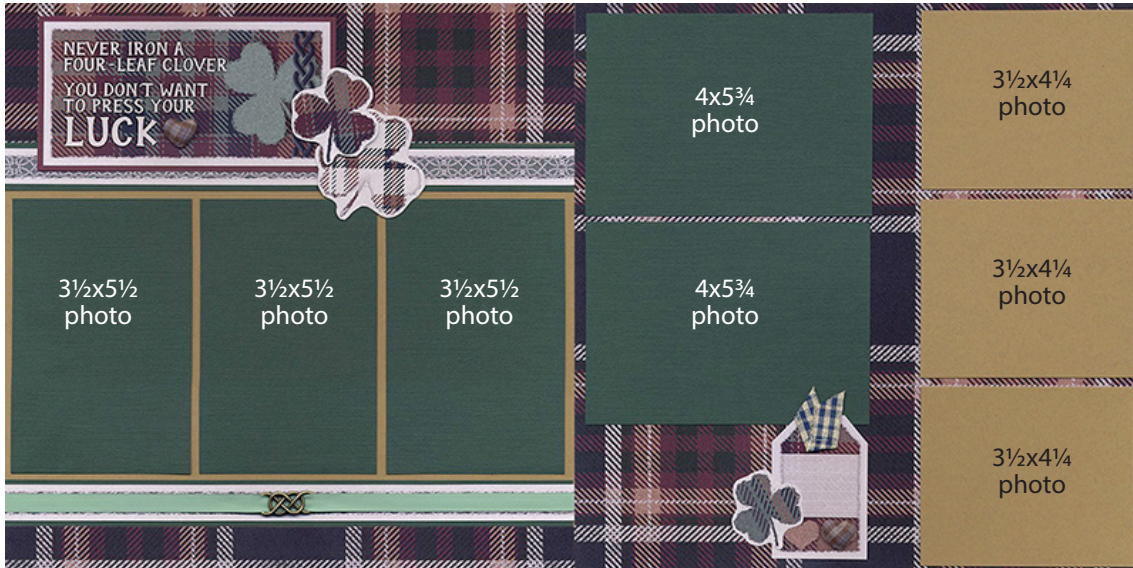
Rotate and trim the 4x12 at 6". Remove small images from one 4x6 piece with scissors.

Cut the 3x12 at 10, 8, and 6".

Trim the 2x12 at 10, 8, 6 and 3.5".



## Layouts 1 & 2



- 12x12 Kraft (LB)
- 12x12 Dk. Plaid Print (RB)
- 3x12 Dk. Plaid
- 1x12 Dk. Plaid
- 3.25x6.25 Burgundy
- (3) 3.75x5.75 Dk. Green
- (2) 4.25x6 Dk. Green
- (2) 1x12 Dk. Green
- (3) 3.75x4.5 Kraft
- Printed Cutaparts
- (2) Heart Buttons
- Double Infinity Charm
- Plaid Ribbon
- Lt. Green Ribbon

## Layouts 3 & 4



- 12x12 White (LB)
- 12x12 Lt. Plaid Print (RB)
- (3) 3.75x5.75 Burgundy
- 2.25x3.25 Dk. Green
- 1.75x3.25 Dk. Green
- (3) 4x6 Kraft
- (2) .75x12 Kraft
- (2) 4.25x6.25 White
- Printed Cutaparts
- Heart Button
- Double Infinity Charm
- Clover Woodcut
- Plaid Ribbon
- Lt. Green Ribbon



Layouts 5 & 6



- 12x12 Burgundy (LB)
- 12x12 Navy (RB)
- (2) 6x8 Dk. Plaid
- 4.25x6.25 Burgundy
- (2) 4.25x6.25 Navy
- 1x3.25 Navy
- 2.25x3.25 Dk. Green
- 4.25x5.75 Dk. Green
- (2) .75x12 Dk. Green
- .75x4.5 Kraft
- Printed Cutaparts
- Key Charm
- (3) Mini Tassels
- Burgundy Ribbon

Layouts 7 & 8



- (2) 12x12 Lt. Green (LB & RB)
- 7x12 Lt. Plaid
- 5x12 Lt. Plaid
- 4.25x6.25 Burgundy
- (3) 4.25x6.25 Dk. Green
- (2) 3x3.5 Navy
- 3.25x6.75 Navy
- 3.25x4.25 Navy
- (2) 1.25x12 Navy
- (2) 2.75x3.25 White
- (2) 4x6 White
- 1.75x12 White
- Printed Cutaparts
- (2) Clover Woodcuts
- Burgundy Ribbon

