



# Special Release Club Scrap® Card Kit Cherish Sympathy



To view a complete page assembly video tutorial, phone scan the QR code at right, click on, or carefully enter the following link: <https://youtu.be/lp6u-7sSPbc>

## Materials and Tools:

- Cherish CS® Page Kit
  - Cherish Sympathy Card Cutaparts
  - 12" Paper Trimmer
  - Accordion Pocket File
  - ScorPal
  - Adhesive
- Tape
  - Foam Adhesive
  - 3x14" CS® Grid Ruler
  - Scissors
  - CS® Bookbinding Glue
  - Needle-tipped Glue Applicator

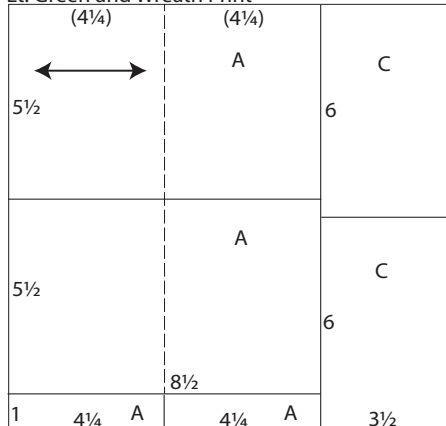
**Measurement Conversions:** .25 = 1/4"  
 .5 = 1/2"  
 .75 = 3/4"

**Important note:** This is the "sympathy" variation of the original Cherish Card Cutaparts. Follow along with the workshop video to trim and prepare the papers, and substitute the sympathy sentiments as shown in the finished card examples in this document. (The final cards will be slightly different from the original wedding version.)

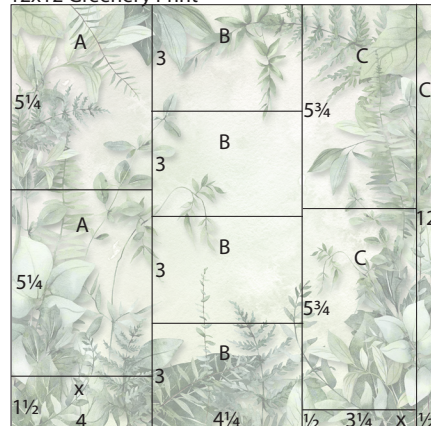
**Preparation:** Trim the papers and cutaparts into sections as indicated by the detailed instructions. While trimming, distribute the pieces to a pile or file designated for each card set as referenced in the diagram.

If there is an arrow on the paper trimming diagram, make sure the paper grain dips easily in the same direction as the arrow when placing the paper into the trimmer.

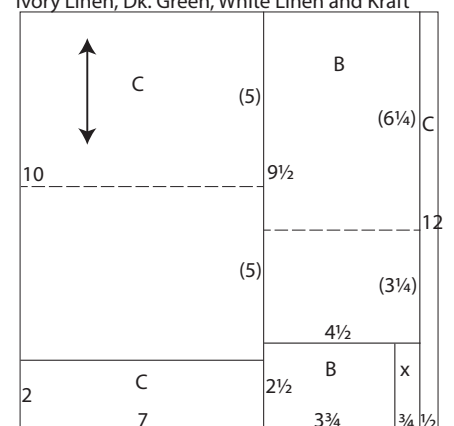
Lt. Green and Wreath Print



12x12 Greenery Print



Ivory Linen, Dk. Green, White Linen and Kraft



1. Trim one Lt. Green and one Wreath Print at 8.5".  
  
 Rotate and cut the 8.5x12 at 11 and 5.5".  
  
 Trim the 1x8.5 at 4.25".  
  
 Cut the 3.5x12 at 6".  
  
*Score and fold each 5.5x8.5 at 4.25".*
2. Cut one Greenery Print at 11.5, 8.25 and 4".  
  
 Rotate and trim the 4x12 at 10.5 and 5.25".  
  
 Cut the 4.25x12 at 9, 6 and 3".  
  
 Trim the 3.25x12 at 11.5 and 5.75".
3. Trim one Ivory Linen, Dk. Green, White Linen and Kraft at 11.5 and 7".  
  
 Rotate and cut the 7x12 at 10".  
  
 Trim the 4.5x12 at 9.5".  
  
 Cut the 2.5x4.5 at 3.75".  
  
*Score and fold each 7x10 at 5".*  
  
*Score and fold each 4.5x9.5 at 6.25".*



Brown

2¾	B	3	A	C
2¾	B	3	A	C
2¾	B	3	A	C
2¾	B	3	A	C
1	4	A	4¼	3¾

4. Cut one 12x12 Brown at 8.25 and 4".

Rotate and trim the 4x12 at 11, 8.25, 5.5 and 2.75".

Cut the 4.25x12 and 3.75x12 at 9, 6 and 3".

Cutapart

3	C	A	2¾	C	A	2¼
3	C	A	2¾	C	A	2¼
3	C	A	2¾	C	A	2¼
3	C	A	2¾	C	A	2¼
3	C	A	2¾	C	A	2¼
5		2¼	1	3½	A	¾ x

5. Remove approximately 1/8" from the perimeter of the cutapart, using the intersecting guidelines on each corner as a cutting guide.

Trim at 10.75, 7.25 and 5".

Rotate and cut the 5x12 at 9, 6 and 3".

Trim the 2.25x12 at 9, 6 and 3".

Cut the 3.5x12 at 11, 8.25, 5.5 and 2.75".

Trim the 1.25x12 at 11.25, 9, 6.75, 4.5 and 2.25".

Cutapart

2¾	A	B	2¼	B	C
2¾	A	B	2¼	B	C
2¾	A	B	2¼	B	C
2¾	A	B	2¼	B	C
2¾	A	B	2¼	B	C
1	4	A	4¼	A	12
				3	B
				3	B
				3	B
				3	B
				3½	B
				¾	x

6. Remove approximately 1/8" from the perimeter of the cutapart, using the intersecting guidelines on each corner as a cutting guide.

Cut at 11.75, 8.25 and 4".

Rotate and trim the 4x12 at 11, 8.25, 5.5 and 2.75".

Cut the 4.25x12 at 11, 8.25, 5.5 and 2.75".

Trim the 3.5x12 at 9, 6.75, 4.5 and 2.25".



Set A: 4¼x5½" Cards



Tag: "You are so loved."  
Inside: "Sending hugs and hope for better days ahead.."



**Assembly steps for all cards:** Nest the 4x5.25" printed panel onto the folded card base, if applicable. For printed card bases, add the 1x4.25" strip adorned with ribbon to the upper portion of the card.

Nest the 2.75x4" Cutapart to the 3x4.25 Brown panel and center onto the card.

Adhere the 1.25x2.25 Cutapart to the manila tag, top with ribbon, and center onto the card. Add the inner sentiment and any other leftover cutaparts or papers, as desired.

Trim the circular "love" cutapart and adhere to the bronze setting; add to the 2nd card.



Tag: "You are so loved."  
Inside: Sending hugs and hope for better days ahead."



Tag: "with deepest sympathy"  
Inside: "Wishing you comfort and peace."



Tag: "with sincere sympathy"  
Inside: "Wishing you comfort and peace."



Set B: 4 1/2x6 1/4" Split Flap Cards



Front: "What a beautiful difference a single life made."  
Inside: "So sorry for your loss!"



**Assembly steps for all cards:** Wrap the upper left corner of the 3x4.25" printed panel with satin ribbon and layer onto the left flap of the card base.

Nest the 2.25x3.5" Cutapart onto the 2.5x3.75" and 2.75x4" panels.

Apply adhesive to the left side of the nested piece only and adhere to the left flap of the card, centered.

Add the sentiment to the inside of the card, on the right side of the flap.

Add a silk flower to the upper left corner and accent with trimmed leaves, as shown.



Front: "In memory — and in celebration — of someone who made this world a better and brighter place."  
Inside: "Sending you strength and love"



Finish cards one and two with a bronze key charm. Trim the circular "hope" from the cutapart, adhere to the bronze setting, and add to the fourth card.



Front: "Wherever a beautiful soul has been, there is a trail of beautiful memories."  
Inside: "So sorry for your loss!"



Front: "Tears are words the heart cannot say."  
Inside: "Wishing you strength for today, and hope for tomorrow."



**Set C: 5x7" Cards**

**Assembly steps for horizontal cards:** Trim and adhere a .5x7" strip to the 2x7" piece and layer onto the bottom of the card. Nest the 3.25x5.5" printed panel onto the 3.5x6" Lt. Green panel and center onto the card. Nest the Cutapart sentiment onto a 3x3.75" Brown panel and staple folded ribbon to the upper left edge. Add the nested cutapart to the card and finish with the inner sentiment.



Front: "Somewhere between hello and goodbye, there was love."  
Inside: "So much love. Thinking of you."



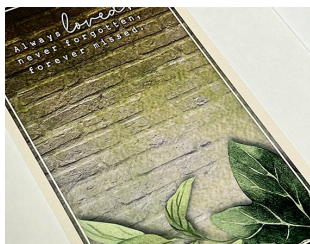
Front: "Somewhere between hello and goodbye, there was love."  
Inside: "So much love" and tag with "thinking of you"



**Assembly steps for vertical cards:** Wrap the 2x7" strip with ribbon or add a .5x7" paper strip and adhere to the left side of the folded card base. Nest the 2.75x3.5" sentiment onto the 3x3.75" Brown panel. Thread ribbon through the left and right sides of the heart-shaped woodcut. Wrap the ends around to the back and secure with tape. Nest the panel onto the card and finish with the inner sentiment.



Front: "with sympathy"  
Inside: "Always loved, never forgotten, forever missed."



Front: "with sympathy"  
Inside: "Always loved, never forgotten, forever missed."

