



# Club Scrap® Special Edition Card Kit

## Gnome for Christmas

### Materials and Tools:

- Gnome for Christmas Special Edition CS® Card Kit
  - 12" Paper Trimmer
  - Accordion Pocket File
  - ScorPal
  - Adhesive
  - Tape
  - Foam Adhesive
- 3x14" CS® Grid Ruler
  - Scissors
  - CS® Bookbinding Glue
  - Needle-tipped Glue Applicator
  - Corner Chomper or Corner Rounder Punch
  - Postage-edged Scissors (Optional)

**Measurement Conversions:** .25 = 1/4"  
 .5 = 1/2"  
 .75 = 3/4"

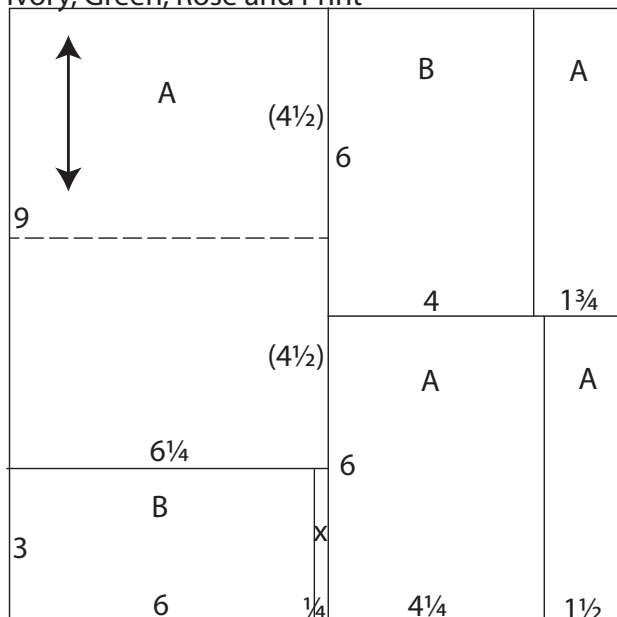
### Preparation:

Trim the papers and cutparts into sections as indicated by the detailed instructions. While trimming, distribute the pieces to a pile or file designated for each card set as referenced in the diagram. *Prior to trimming the cutparts, remove approximately 1/8" from the perimeter of each sheet, using the intersecting guidelines on each corner as a cutting guide.*

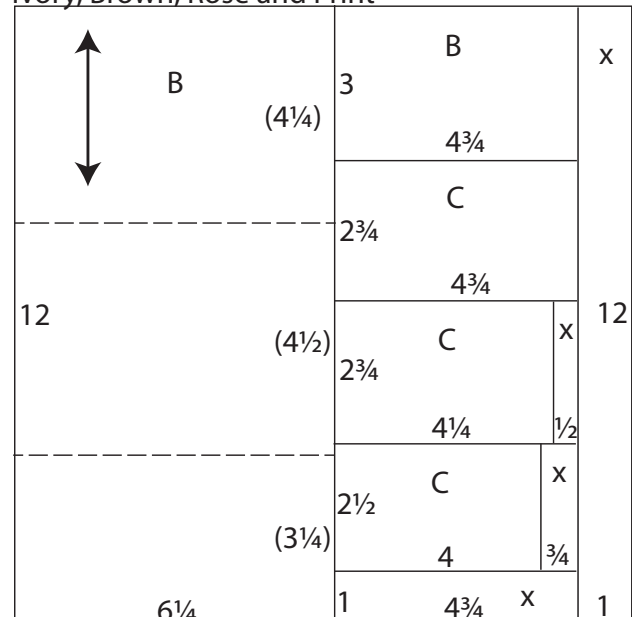
If there is an arrow on the paper trimming diagram, make sure the paper grain dips easily in the same direction as the arrow when placing the paper into the trimmer.

Please click on or enter the following to view a helpful card assembly tutorial: <https://youtu.be/00OBnUiLc9k>

Ivory, Green, Rose and Print



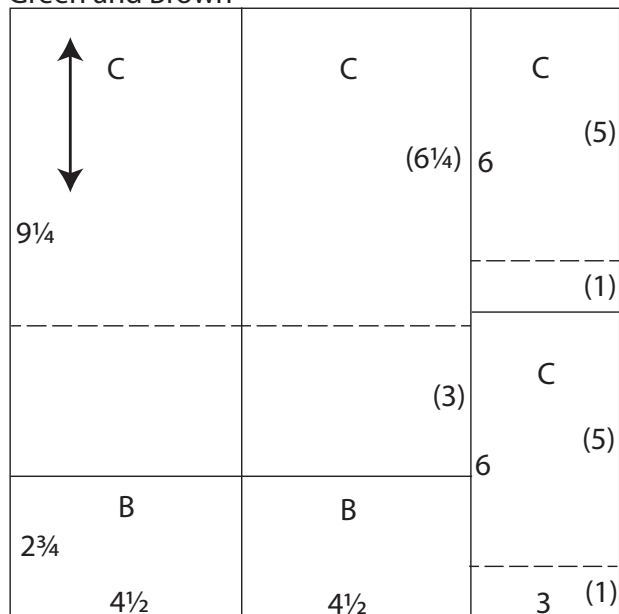
Ivory, Brown, Rose and Print



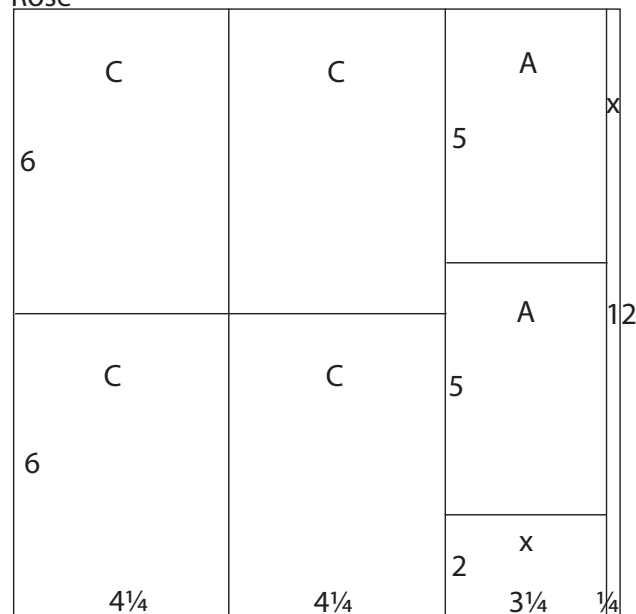
1. Trim one Ivory, Green, Rose, and Print at 6.25". Cut the 6.25x12 at 9". Trim the 3x6.25 at 6". Cut the 5.75x12 at 6". Trim one 5.75x6 vertically at 4". Cut one 5.75x6 vertically at 4.25". Score each 6.25x9 at 4.5".
2. Cut one Ivory, Brown, Rose and Print at 11 and 6.25". Trim the 4.75x12 at 11, 8.5, 5.75 and 3". Cut one 2.75x4.75 at 4.25". Trim the 2.5x4.75 at 4". Score each 6.25x12 horizontally at 4.25 and 8.75".



Green and Brown



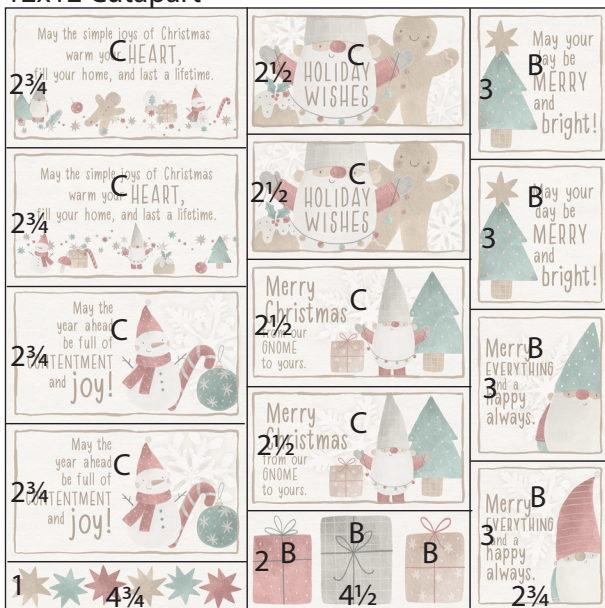
Rose



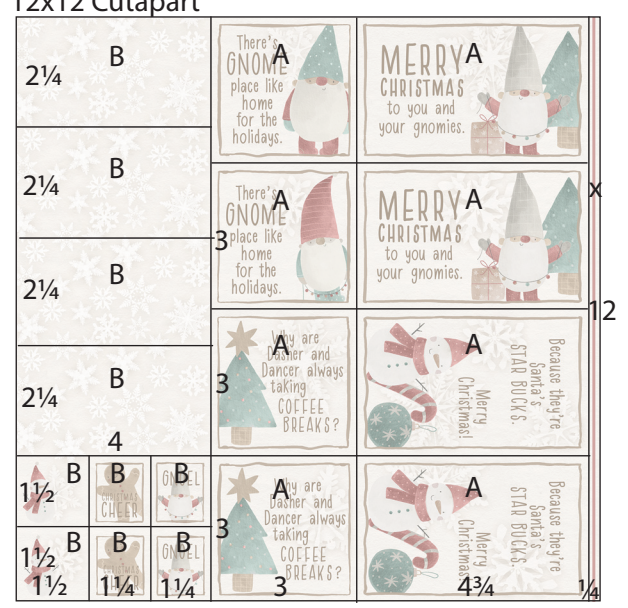
- Trim one Green and one Brown at 9 and 4.5". Cut each 4.5x12 at 9.25". Trim the 3x12 at 6". Score each 4.5x9.25 horizontally at 6.25". Score each 3x6 horizontally at 5".

- Cut one Rose at 11.75, 8.5 and 4.25". Trim each 4.25x12 at 6". Cut the 3.25x12 at 10 and 5".

12x12 Cutpart



12x12 Cutpart



- Trim one Cutpart at 9.25 and 4.75". Cut the 4.75x12 at 11, 8.25, 5.5 and 2.75". Trim the 4.5x12 at 10, 7.5, 5 and 2.5". Cut the 2.75x12 at 9, 6 and 3".

- Trim the Cutpart at 11.75, 7 and 4". Cut the 4x12 at 10.5, 9, 6.75, 4.5 and 2.25". Trim each 1.5x4 at 2.75 and 1.5". Cut the 3x12 at 9, 6 and 3". Trim the 4.75x12 at 9, 6 and 3".



7. Trim the White Crinkle Paper vertically at 4.5 and 2.25". Cut each 2.25x7.5 at 3.75".

White Crinkle Paper

C	C	B
3¾		
C	C	1
3¾	2¼	

Set A: 4½x6¼" Single Fold Cards



Inside: "Merry Christmas to you and your gnomies."

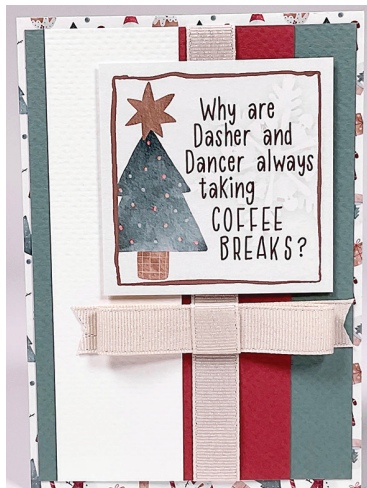
Inside: "Merry Christmas to you and your gnomies."



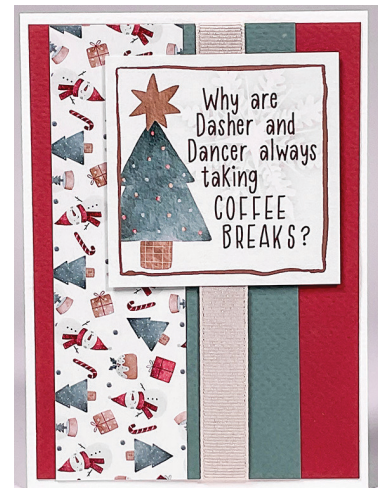
**Assembly steps for cards at left:** Nest the 1.5x6 strip onto the 1.75x6" strip and wrap with ribbon. Layer near the bottom edge of a 4.25x6" panel and nest onto the card base. Add the sentiment to the right side of the card. Adhere a 1x5.5" strip trimmed from leftover pieces to the inside of the card, if desired. Finish with the inner sentiment.

Assembly steps for cards at right:

Nest the 1.5x6 and 1.75x6" strips side by side onto the 4.25x6" panel and wrap with ribbon. Add a three-part bow to the card, if desired, and nest the panel onto the folded card base. Adhere the sentiment to the upper right corner of the card. Nest the 3x4.75" inner sentiment onto the 3.25x5" panel. Top the snowman with the Santa hat punched from the kraft tag and adhere to the inside of the card.



Inside: "Because they're Santa's star bucks. Merry Christmas!"



Inside: "Because they're Santa's star bucks. Merry Christmas!"



Set B: 4½x6¼" Tri-Fold Cards



Inside: "Merry everything and a happy always."

Inside: "Merry everything and a happy always."

**Assembly steps for all cards:** Tri-fold the card base, keeping the shortest flap on the front (left side) of the card. Nest the 3x6" panel to the left flap and the 4x6" panel to the right flap.

If desired, add a scrap of White Crinkled Paper behind the die cut Santa hat opening on the Kraft tag. Top the tag with ribbon and a bow. Nest onto the 2.25x4" cutapart (snowflake print), 2.75x4.5 panel and 3x4.75" panel. Adhere to the left card flap.

Add the sentiment and other leftover paper strips to the inside of the card along with the inner sentiment.



**Tip:** Add a cutapart scrap to the 4x6" panel on the right card flap. Trim the snowman image with a postage-edged scissors and add to the strip.



Inside: "May your day be merry and bright!"



Inside: "May your day be merry and bright!"



Set C: 4½x6¼" Split Flap Cards



Inside: "May the year ahead be full of contentment and joy!"



**Assembly steps for all cards:** Fold along the score line on the 4.5x9.25" card base and the 3x6" panel. Wrap the 1" tab on the 3x6" panel around the right edge of the 4.25x6" panel and adhere to the card base, making sure the 3x5" flap is on the right, and the 3x4.5" card flap is on the left.

Nest one 2.25x3.75" Crinkle Paper panel onto the 2.5x4" panel. Thread twine onto each hanging loop of a star charm and tape the ends to the back of the nested panels; adhere the panels to the left card flap. Nest the 2.5x4.5" cutapart sentiment onto the 2.75x4.75" panel and center onto the right card flap.

Add a 2.75x4.25" panel to the left flap on the inside of the card and finish with the cutapart sentiment. Add a die cut Santa hat shape from the Kraft tag to the snowman on the inside of the first two cards.



Inside: "May the year ahead be full of contentment and joy!"



Inside: "May the simple joys of Christmas warm your heart..."



Inside: "May the simple joys of Christmas warm your heart..."

