



Assembly Line Cardmaking

Special Edition Forest Floor

Materials and Tools:

- Forest Floor Special Edition Card Kit
 - 12" Paper Trimmer
 - ScorPal
 - Adhesive
 - Tape
- 3x14" CS® Grid Ruler
 - Scissors
 - CS® Bookbinding Glue
 - Needle-tipped Glue Applicator

Measurement Conversions: .25 = 1/4"
 .5 = 1/2"
 .75 = 3/4"

Preparation:

Trim the printed cutaparts into sections as indicated by the artwork. While trimming the cutaparts and papers according to the instructions, distribute the pieces to a pile or file designated for each card set as referenced in the diagram.

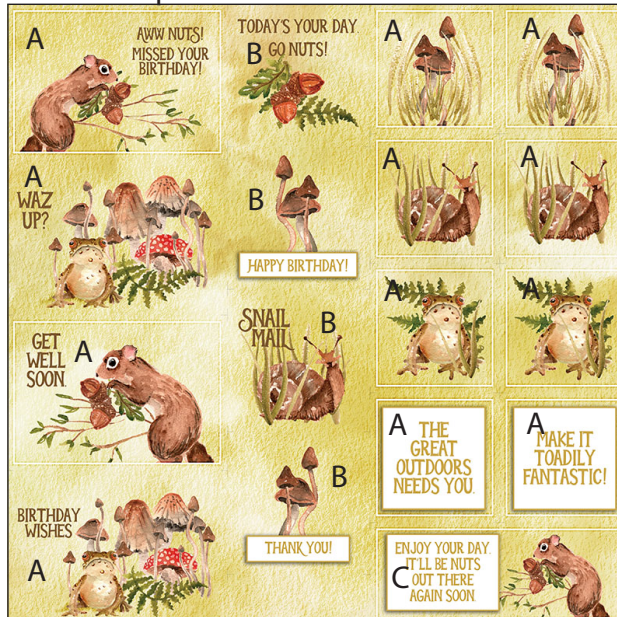
If there is an arrow on the paper trimming diagram, make sure the paper grain dips easily in the same direction as the arrow when placing the paper into the trimmer.

Click or carefully enter the following link to view a helpful video tutorial: youtu.be/zYD5XtGTAf4

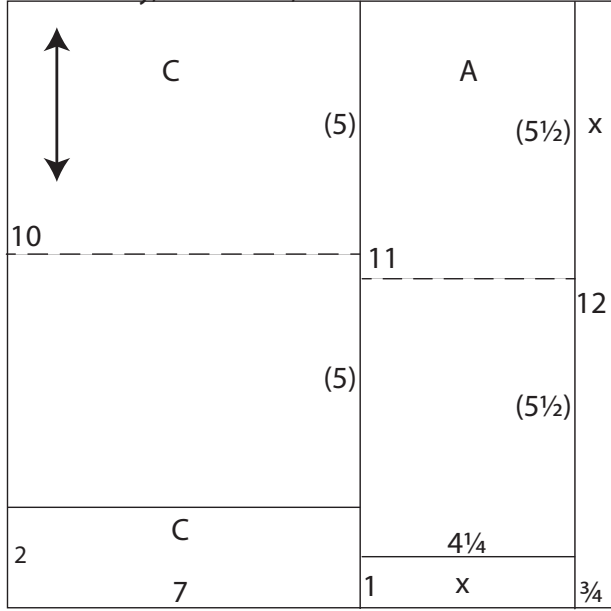
12x12 Cutapart



12x12 Cutapart

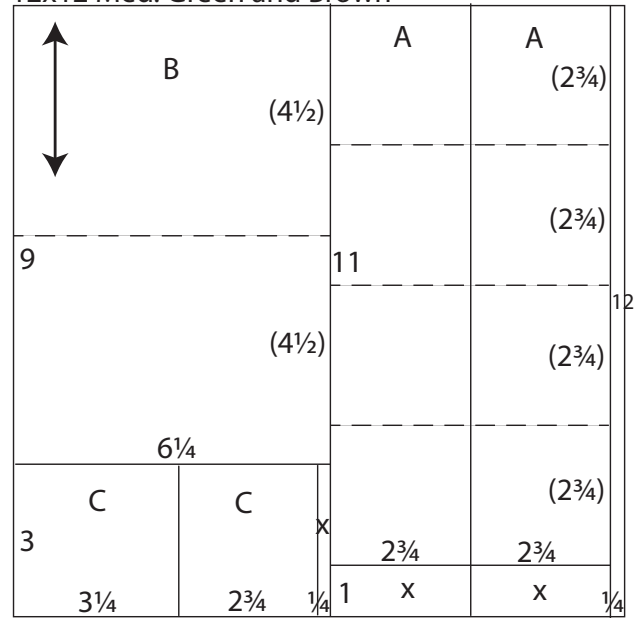


12x12 Ivory, Dk. Green, Med. Green and Lt. Green



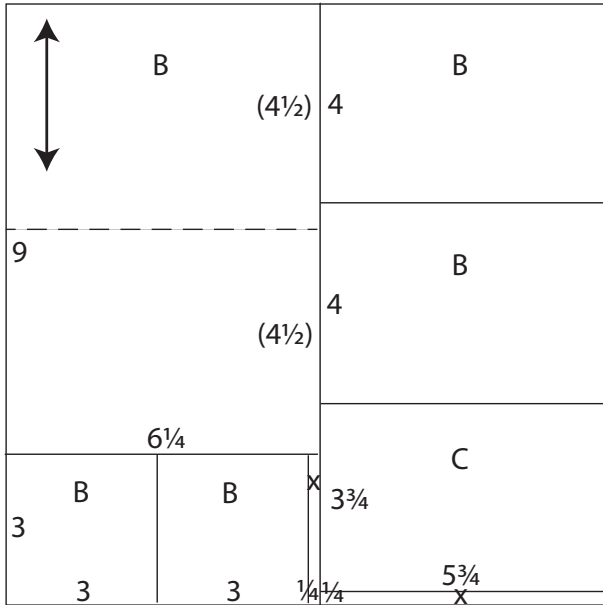
1. Trim one Ivory, Dk. Green, Med. Green and Lt. Green at 11.25 and 7". Cut the 7x12 horizontally at 10". Trim the 4.25x12 at 11". Score and fold each 7x10 horizontally at 5". Score and fold each 4.25x11 at 5.5".

12x12 Med. Green and Brown



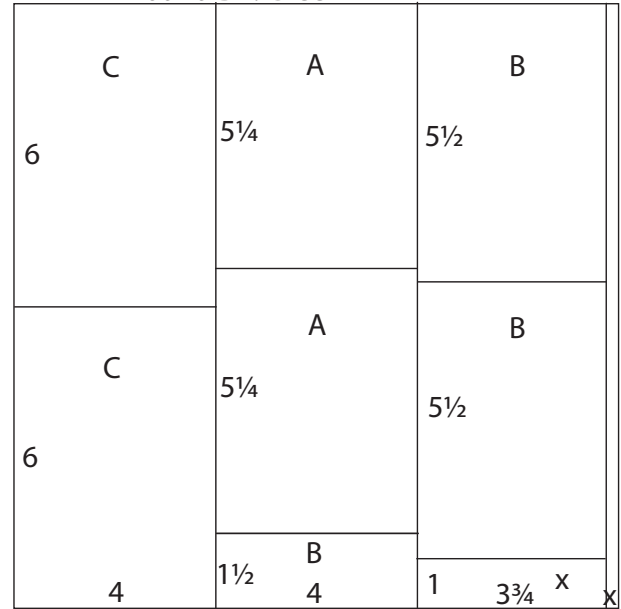
2. Cut one Med. Green and one Brown at 11.75, 9 and 6.25". Trim the 6.25x12 at 9". Cut the 3x6.25 horizontally at 6 and 3.25". Trim each 2.75x12 at 11". Score and fold the 6.25x9 horizontally at 4.5". Score and accordion fold each 2.75x11 at 2.75, 5.5 and 8.25".

12x12 Print and Lt. Green



3. Trim one Print and one Lt. Green at 6.25". Cut the 6.25x12 at 9". Trim the 3x6.25 horizontally at 6 and 3". cut the 5.75x12 at 11.75, 8 and 4". Score and fold each 6.25x9 horizontally at 4.5".

12x12 Print and Dk. Green



4. Cut one Print and one Dk. Green at 11.75, 8 and 4". Trim one 4x12 at 6". Cut one 4x12 at 10.5 and 5.25". Cut one 3.75x12 at 11 and 5.5".



Set A: (4) 4.25x5.5" Cards



Inside: "Here's a quick snail mail hug."



Assembly steps for all cards:

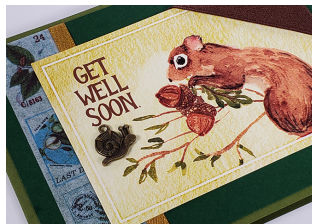
Interchange paper colors as shown. Nest panels and cutparts, adding ribbon, if desired. Place the accordion folded strip horizontally in front of you with the mountain fold in the middle. Center a cutpart onto each section of the strip. Fold up the accordion and apply adhesive to the back; attach to the right edge of the inside card base, centered top to bottom. Apply adhesive to the front of the accordion and close the card.



Inside: "Make it toadily fantastic!"



Inside: "Aww nuts! Missed your birthday!"



Inside: "Get well soon."



Set B: (4) 4½x6¼" Cards



Inside: "Thanks so much!"



Inside: "Celebrate! Don't leave mushroom for anything else!"



Assembly steps for all cards: Distribute the colored card bases, panels and cutaparts. Embellish with ribbon bows, washi tape, and metal leaves, as shown. Adhere the sentiment to the inside of the card.



Inside: "This card doesn't have mushroom for all the love I'm sending!"



Inside: "Sorry this card doesn't have mushroom for cash!"



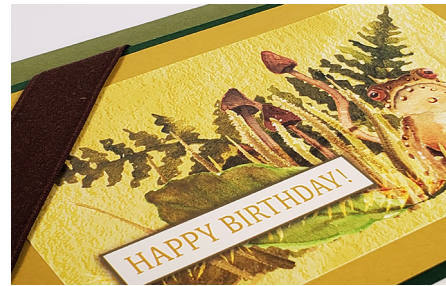
Set C: (4) 5x7" Cards



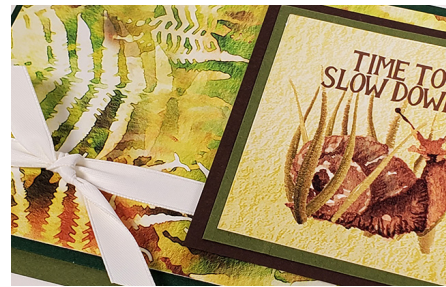
Inside: "You're just the best. Thank you."



Inside: "Toadily thinking of you."



Inside: "Enjoy your day. I'll be nuts out there agian soon."



Inside: "Go a little wild today."

