



Assembly Line Cardmaking

Special Edition Farm Critters

Materials and Tools:

- Farm Critters Special Edition Card Kit
- 12" Paper Trimmer
- ScorPal
- Bone Folder
- Adhesive
- Tape
- 3x14" CS® Grid Ruler
- Scissors
- CS® Bookbinding Glue
- Needle-tipped Glue Applicator
- Corner Chomper or Corner Rounding Punch
- Cutting Mat and Craft Knife (Optional)
- Accordion Pocket File Organizer (Optional)
- Pencil

Measurement Conversions: .25 = 1/4"
 .5 = 1/2"
 .75 = 3/4"

Preparation:

Trim the printed cutaparts into sections as indicated by the artwork. While trimming the cutaparts and papers according to the instructions, distribute the pieces to a pile or file designated for each card set as referenced in the diagram.

If there is an arrow on the paper trimming diagram, make sure the paper grain dips easily in the same direction as the arrow when placing the paper into the trimmer.

Enter or click on the following link for a helpful video tutorial: youtu.be/a_s_xD_rd5o

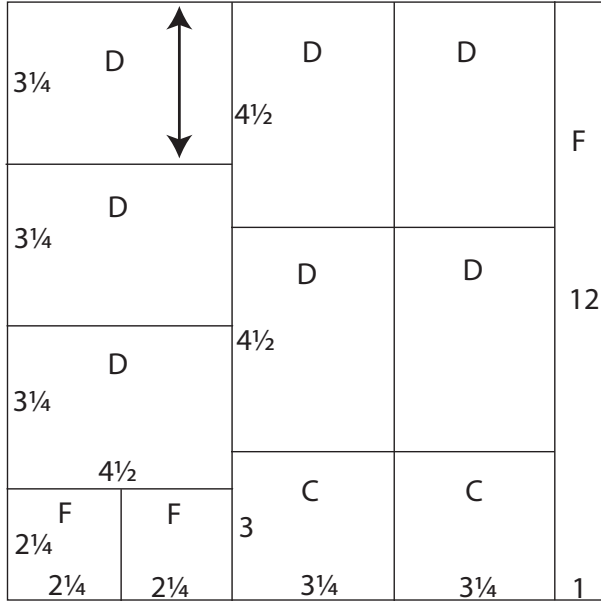
12x12 Cutapart



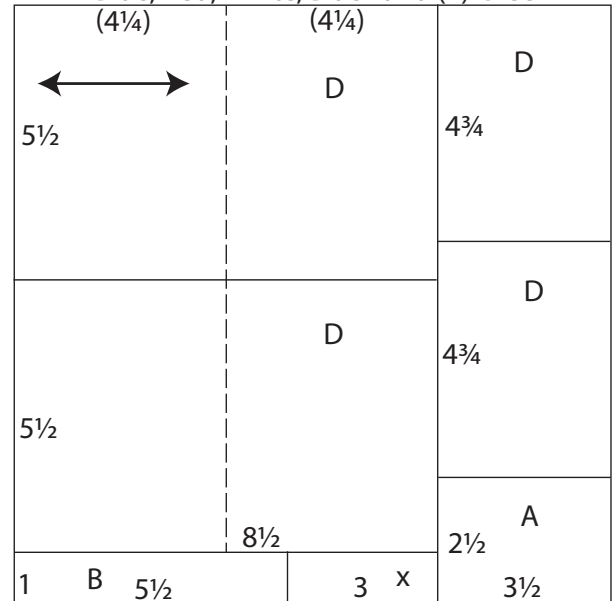
12x12 Cutapart



12x12 Black and 12x12 White



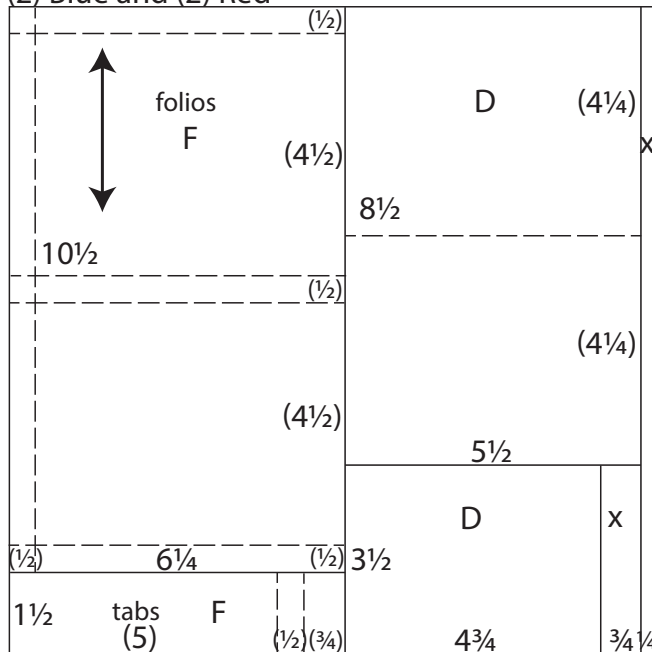
12x12 Blue, Red, White, Black and (2) Green



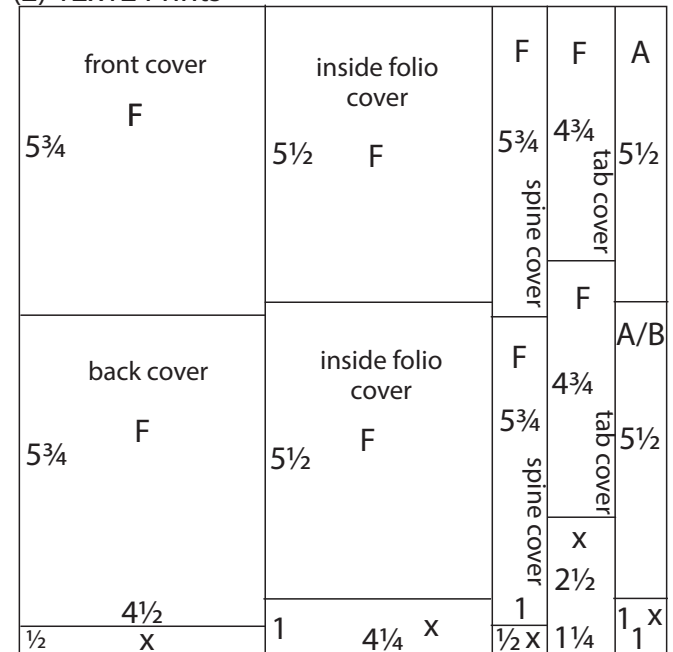
- Trim one Black and one White Plain at 11, 7.75 and 4.5". Cut the 4.5x12 at 9.75, 6.5 and 3.25". Trim the 2.25x4.5 at 2.25". Cut each 3.25x12 at 9 and 4.5".

- Cut one Blue, one Red, one White, one Black and two Green Plains at 8.5". Trim the 8.5x12 at 11 and 5.5". Cut the 1x8.5 at 5.5". Trim the 3.5x12 horizontally at 9.5 and 4.75". Score each 5.5x8.5 horizontally at 4.25".

(2) Blue and (2) Red



(2) 12x12 Prints

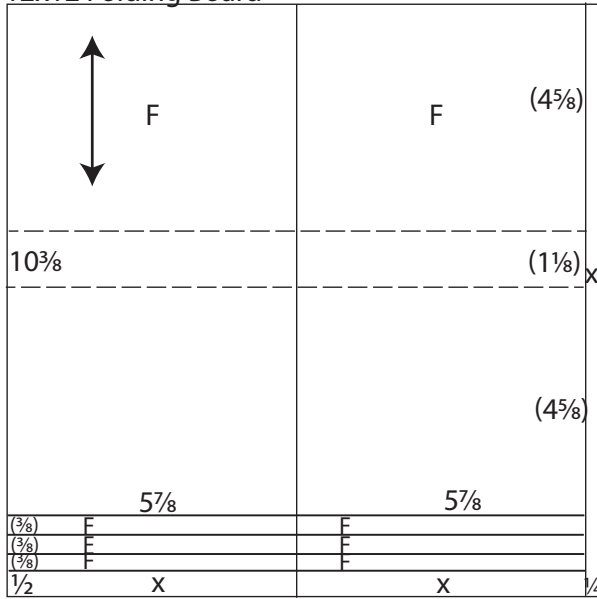


- Trim two Blue and two Red at 11.75 and 6.25". Cut the 6.25x12 at 10.5". Trim the 5.5x12 at 8.5". Cut the 3.5x5.5 horizontally at 4.75". Score the 6.25x10.5 vertically at 5.75 and horizontally at .5, 5, 5.5 and 10". Score each 1.5x6.25 horizontally at 5 and 5.5". Score each 5.5x8.5 horizontally at 4.25".

- Trim each 12x12 Print at 11, 9.75, 8.75 and 4.5". Cut the 4.5x12 at 11.5 and 5.75". Trim the 4.25x12 at 11 and 5.5". Cut one 1x12 at 11.5 and 5.75". Trim the 1.25x12 at 9.5 and 4.75". Cut one 1x12 at 11 and 5.5".

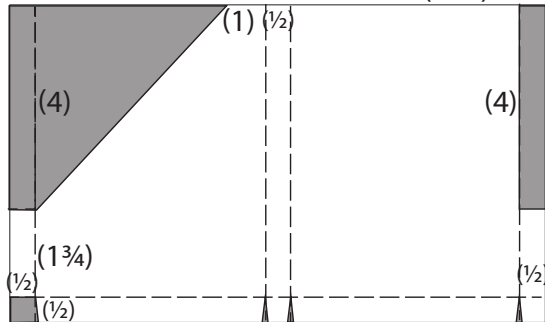


12x12 Folding Board

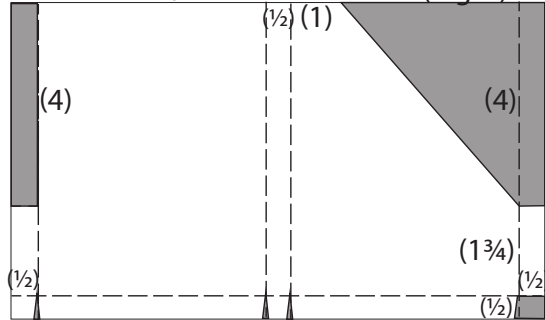


5. Cut one 12x12 Folding Board at $11\frac{3}{4}$ and $5\frac{7}{8}$ ". Cut each $5\frac{7}{8}$ x12 horizontally at $11\frac{1}{2}$, $11\frac{1}{8}$, $10\frac{3}{4}$, and $10\frac{3}{8}$ ". Score each $5\frac{7}{8}$ x $10\frac{3}{8}$ horizontally at $4\frac{5}{8}$ and $5\frac{3}{4}$ ".

6 1/4 x 10 1/2 Red/Blue Folio Pockets (Left)



6 1/4 x 10 1/2 Red/Blue Folio Pockets (Right)



6. Work with the bumps of the score lines facing up. Remove all areas shown in gray on each Folio Pocket. Cut diagonally as shown with scissors or a ruler and craft knife. Make one of each color in each style (left/right).



7. With the bumps of the score lines still facing up, glue a $\frac{3}{8}$ " folding board support to the center spine of each folio pocket. (Trim the folding board to the appropriate length to fit.)
8. Place the one folio score side down and temporarily center a 4.25x5.5" inside folio cover onto the angled area. Flip and mark the angled line onto the plain side of the cover paper. Make a second line on the cover paper, $\frac{1}{8}$ " below the first. Trim along the second line with scissors or a ruler and craft knife to create a piece to perfectly nest onto the angled area of the folio. Adhere.
9. Repeat for the remaining folio pockets.
10. Fold along all score lines on each folio pocket. Glue the side tab of each folio to form a pocket shape. Tuck in the bottom side tabs and glue the bottom flaps in place.
11. Round the corners of the longest section of each 1.5x6.25" folio tab. Adhere a trimmed $\frac{3}{8}$ " piece of folding board supports to the scored spine area of each tab, to the side with the bumps of the score lines facing up.
12. Adhere the 1.25x4.75" printed tab covers to the other side of the tabs. Fold on the score lines and adhere the $\frac{1}{2}$ " scored area to the back of each folio pocket, about $\frac{1}{2}$ " from the top inner corner, so the tab wraps around to the front of the angled pocket to help hold the cards in place during transit.



13. Add a hook and loop dot to each tab/pocket.
14. Place a folding board folio cover on your work surface with the *bumps of the scores facing up*. Nest the 4.5x5.75" printed covers and 1x5.75" printed spine covers onto the folding board.
15. Gently fold along the score lines to create a book cover shape. Contrary to most situations, the bump of the score functions best when on the outside of the folding board.
16. Install the prepared pockets onto the left and right side of the inside folding board cover. Make sure the folio pockets angle downward toward the center spine.
17. Adhere the 1x5.75" printed spine cover to the inside of the book.
18. Nest the .75x12 printed cutpart onto the 1x12 Black or White strips. Wrap around the folio to form a belly band. Cover the seam of the band with a 2x2" printed cutpart and a 2.25x2.25" Black or White mat.
19. Repeat steps 14-18 to create the second folio.

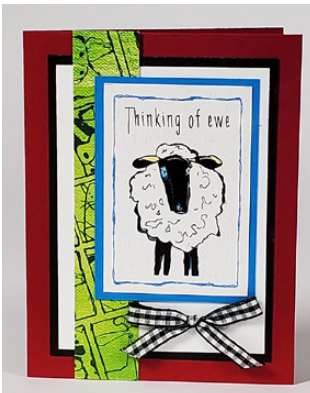
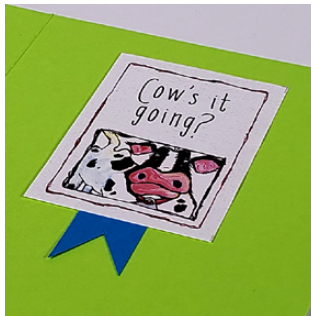


Set A: (6) 4.25x5.5" Cards



Assembly steps for all cards:

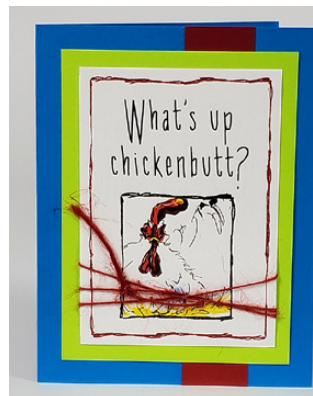
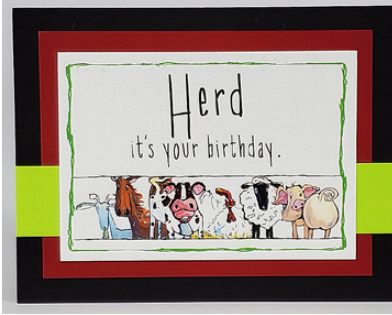
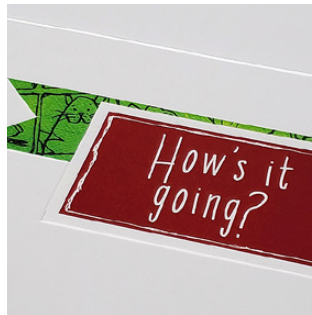
Interchange the colored card bases, panels and cutaparts, as shown. Embellish with wrapped ribbons and bows. Add a sentiment to the inside of each card and enhance with scraps from the paper trimming session.



Set B: (6) 4 1/4 x 5 1/2" Cards

Assembly steps for all cards:

Interchange the colored card bases, panels and cutaparts, as shown. Embellish with wrapped ribbons and bows. Add a sentiment to the inside of each card and enhance with scraps from the paper trimming session. In some cases, the 3.25x4.5" White panel is used as a liner for the inside of the card to provide a brighter writing surface.



Set C: (4) 4¼x5½" Cards



Assembly steps for all cards:

Interchange the colored card bases, panels and cutaparts, as shown. Embellish with wrapped ribbons and bows. Add a sentiment to the inside of each card and enhance with scraps from the paper trimming session.

Once completed, insert four cards and four envelopes into each folio pocket.

