



Assembly Line Cardmaking

Special Edition Baby, Baby Card Add-on

Materials and Tools:

- Baby, Baby* Special Edition Page Kit
 - Baby, Baby* Card Cutaparts
 - 12" Paper Trimmer
 - ScorPal
 - Adhesive
 - Tape
 - 3x14" CS® Grid Ruler
- Scissors
 - CS® Bookbinding Glue
 - Needle-tipped Glue Applicator
 - Foam Adhesive Circles
 - Texture Embossing Folders (Optional)
 - Embossing Machine (Optional)

Measurement Conversions:

- .25 = 1/4"
- .5 = 1/2"
- .75 = 3/4"

Preparation:

Trim the printed cutaparts into sections as indicated by the artwork. While trimming the cutaparts and papers according to the instructions, distribute the pieces to a pile or file designated for each card set as referenced in the diagram.

If there is an arrow on the paper trimming diagram, ensure the grain of the paper dips easily in the direction of the arrow before placing into the trimmer. If there is no arrow, the direction of placement does not matter.

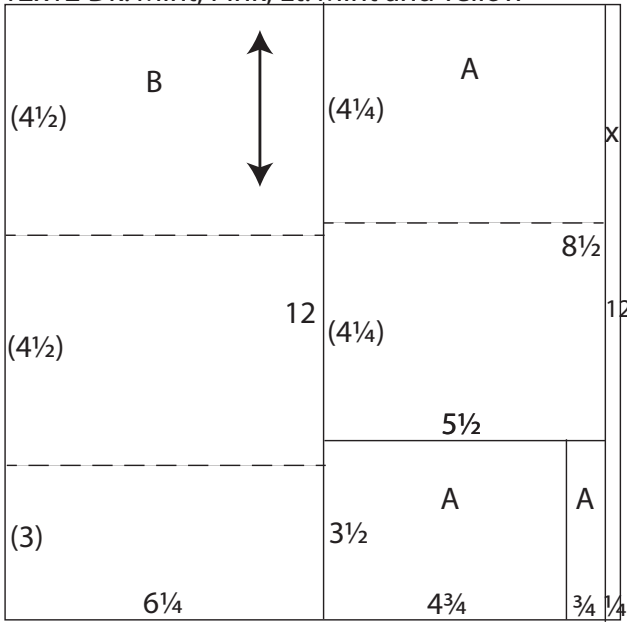
12x12 Cutpart



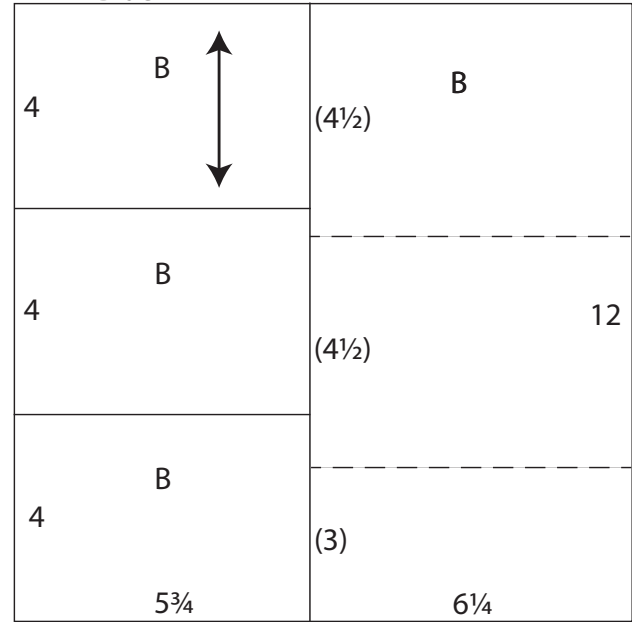
12x12 Cutpart



12x12 Dk. Mint, Pink, Lt. Mint and Yellow

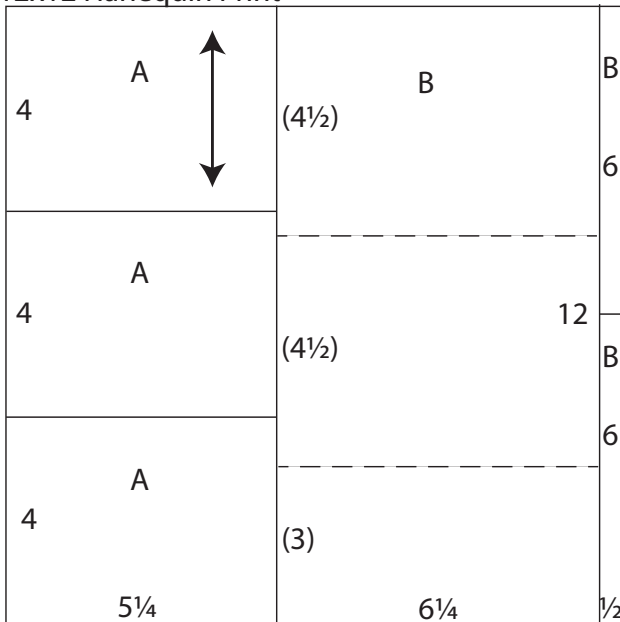


12x12 Blue

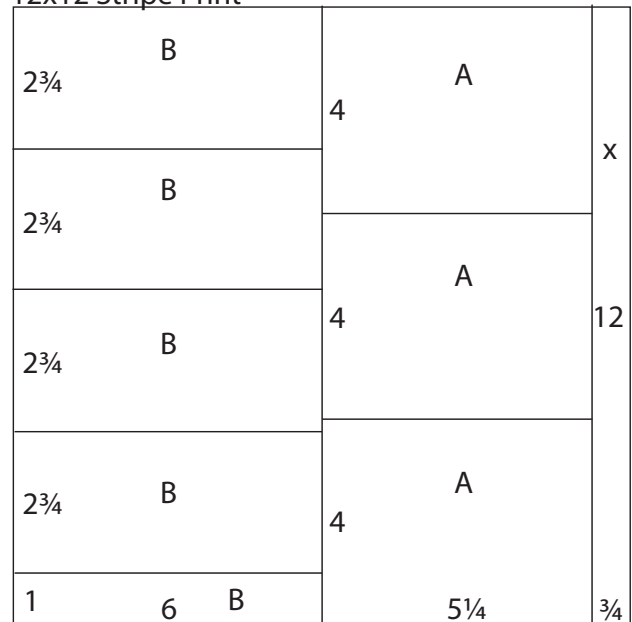


1. Trim one 12x12 Dk. Mint Plain, Pink Plain, Lt. Mint Plain and Yellow Plain at 11.75 and 6.25". Cut the 5.5x12 horizontally at 8.5". Trim the 3.5x5.5 horizontally at 4.75". Score and tri-fold each 6.25x12 horizontally at 4.5 and 9".
2. Cut one 12x12 Blue Plain at 5.75". Trim the 5.75x12 horizontally at 8 and 4". Score and tri-fold the 6.25x12 horizontally at 4.5 and 9".

12x12 Harlequin Print



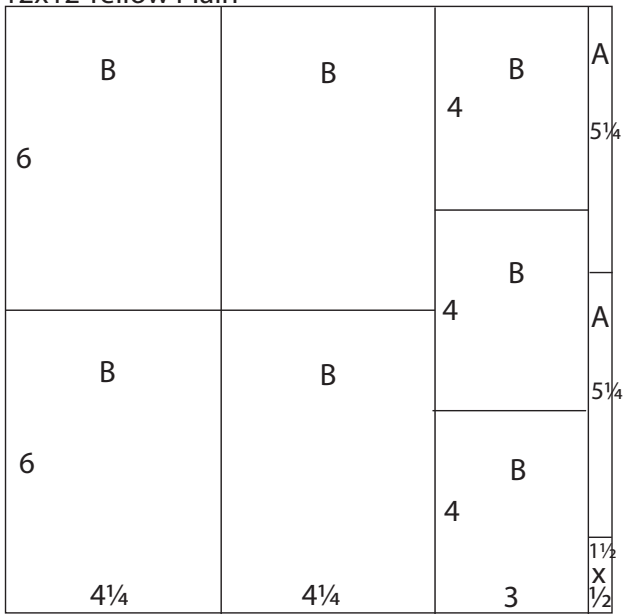
12x12 Stripe Print



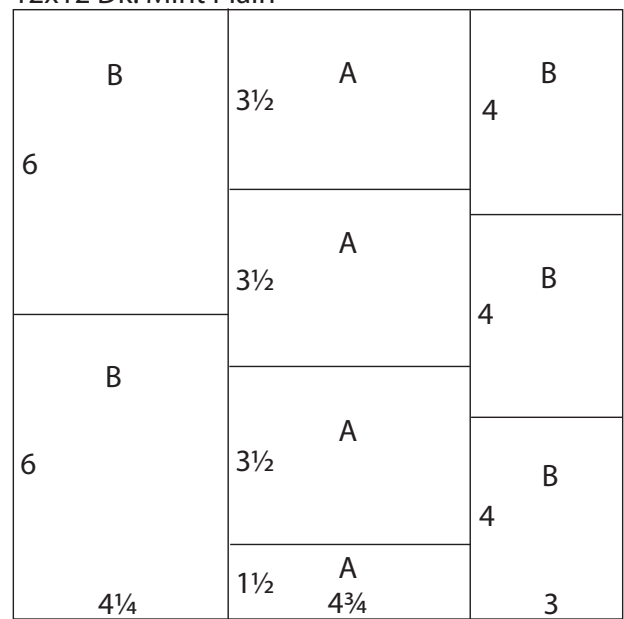
3. Trim one 12x12 Harlequin Print at 11.5 and 5.25". Cut the 5.25x12 horizontally at 8 and 4". Trim the .5x12 horizontally at 6. Score and tri-fold the 6.25x12 horizontally at 4.5 and 9".
4. Cut one 12x12 Stripe Print at 11.25 and 6". Trim the 6x12 horizontally at 11, 8.25, 5.5 and 2.75". Cut the 5.25x12 horizontally at 8 and 4".



12x12 Yellow Plain



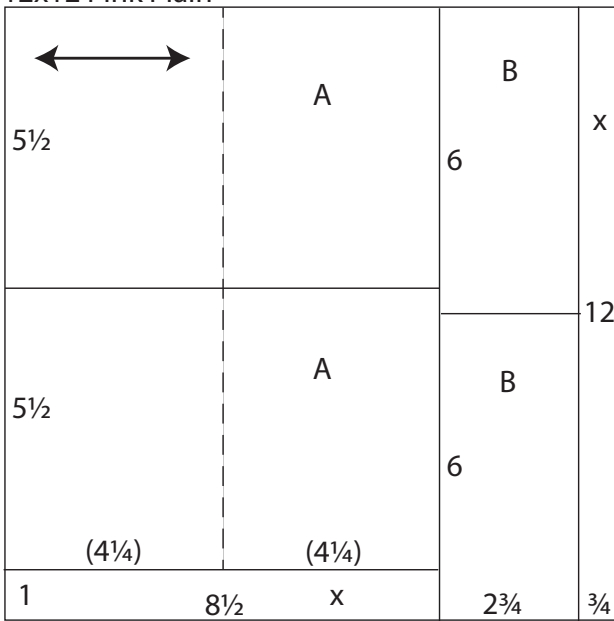
12x12 Dk. Mint Plain



- Trim one 12x12 Yellow Plain at 11.5, 8.5 and 4.25". Cut each 4.25x12 horizontally at 6". Trim the 3x12 horizontally at 8 and 4". Cut the .5x12 horizontally at 10.5 and 5.25".

- Cut one 12x12 Dk. Mint Plain at 9 and 4.25". Trim the 4.25x12 horizontally at 6". Cut the 4.75x12 horizontally at 10.5, 7 and 3.5". Trim the 3x12 horizontally at 8 and 4".

12x12 Pink Plain



- Trim one 12x12 Pink Plain at 11.25 and 8.5". Cut the 8.5x12 horizontally at 11 and 5.5". Trim the 2.75x12 horizontally at 6". Score and fold each 5.5x8.5 horizontally at 4.25".



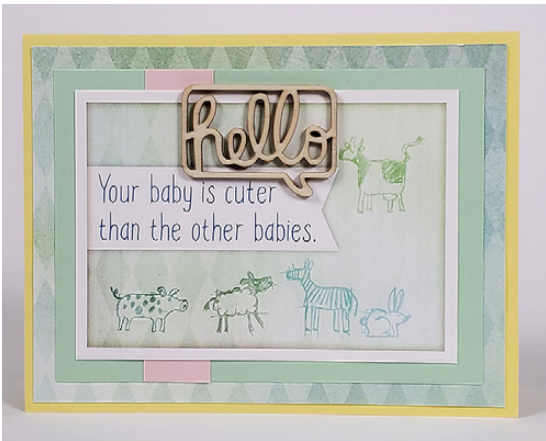
Set A: 4 1/4 x 5 1/2" Cards with 4 x 5 1/4" and 3 1/2 x 4 3/4" Panels



Inside: "You're amazing!"



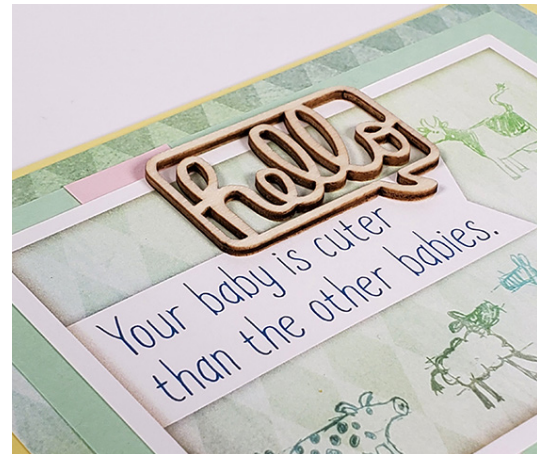
Inside: "So happy for you!"



Inside: "Congratulations" and one 3 1/2 x 4 3/4" Green Panel

Assembly steps for all

cards: Add texture to plain card panels, if desired. Nest the panels and anchoring strips onto the folded card base, interchanging colors and patterns. Add washi tape to the narrow strips. Wrap satin ribbon around one corner of the cutpart, wrap the cutpart with twine, or add a wood word embellishment to decorate the finished card.



Inside: "Congratulations!"



Inside: "Well, it was worth a shot."



Inside: "Congratulations!"



Set B: 4½x6¼" Tri-fold Cards with 4¼x6", 4x5¾", 2¾x6" and 3x4" Panels



Left Flap: Bunnies
Right Flap: "Sorry we're all drinking champagne without you."



Left Flap: "Oink"
Right Flap: "Congratulations!"



Left Flap: Bunny
Right Flap: "Congrats!"



Assembly steps for all cards: If desired, add texture to the plain card panels with an embossing folder. Nest panels onto the wide and narrow flaps of each card. Some wide flaps will have two nesting panels. Add a contrasting narrow strip to the right edge of some panels. Nest a cutapart onto a 3x4" card panel and adhere to the upper center of the closed card. (Apply adhesive only to the left edge of this panel.) Embellish with a bow or washi tape. Add a second cutapart panel to the 3x4" mat on the inside of the left flap. Embellish with onesie tags, washi tape and tiny words from the page kit cutaparts. Add a sentiment to the right flap, as shown.



Left Flap: Giraffe with "Moo"
Right Flap: You are officially broke for a very long time."



Left Flap: Sheep with "Baa"
Right Flap: "You change the diapers."



Left Flap: Duck with "Quack"
Right Flap: "A shower of wishes and love for your sweet little bundle of joy!"

