



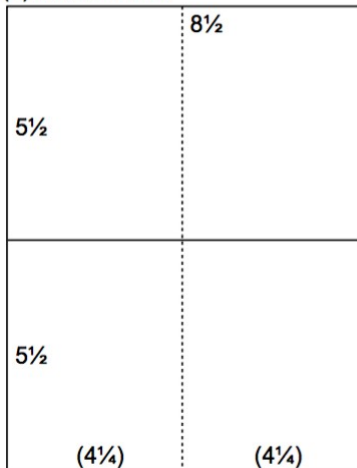
# Assembly Line Cardmaking

## Special Edition 2016 Christmas Thyme

Trimming and scoring instructions for the *Christmas Thyme* paper collection:

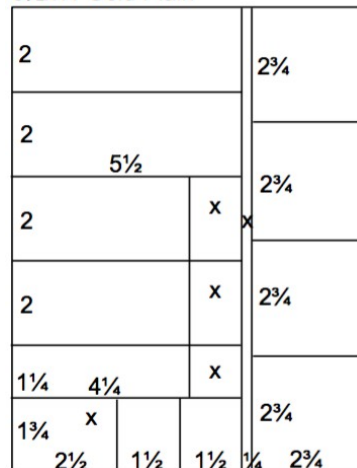
(Makes 20  $4\frac{1}{4} \times 5\frac{1}{2}$ " cards.) To view more card assembly details, visit the [blog: clubscrap.com/16CT](http://blog:clubscrap.com/16CT)

8½x11 Ivory Text Print, Ivory Leaf Print,  
Brown Plain, (2) Cranberry Plains and  
(2) Green Plains



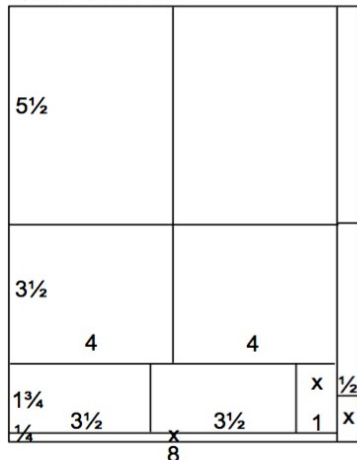
1. Score one 8.5x11 Ivory Text Print, one Ivory Leaf Print, one Brown Plain, two Cranberry Plains and two Green Plains vertically at 4.25". Trim horizontally at 5.5". Fold each 5.5x8.5 in half on the score line.

8½x11 Gold Plain



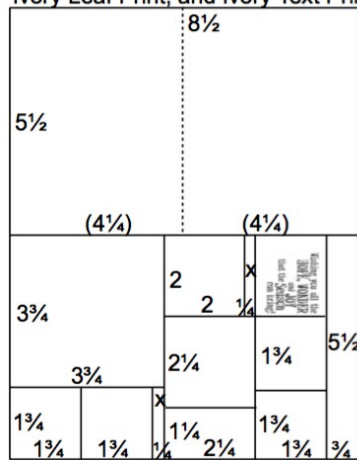
2. Trim one 8.5x11 Gold Plain vertically at 5.75 and 5.5". Cut the 5.5x11 horizontally at 9.25, 8, 6, 4 and 2". Trim two 2x5.5 strips horizontally at 4.25". Cut the 1.25x5.5 horizontally at 4.25". Trim the 1.75x5.5 horizontally at 4 and 2.5". Cut the 2.75x11 horizontally at 8.25, 5.5 and 2.75".

8½x11 Gold Plain



3. Trim one 8.5x11 Gold Plain vertically at 8". Trim the 8x11 horizontally at 10.75, 9 and 5.5". Cut the 5.5x8 and 3.5x8 horizontally at 4". Trim the 1.75x8 horizontally at 7 and 3.5". Cut the .5x11 horizontally at 9.75 and 5.5".

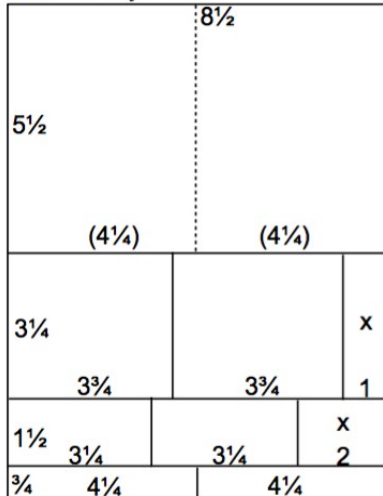
8½x11 Brown Plain, Burgundy Plain,  
Ivory Leaf Print, and Ivory Text Print



4. Trim one 8.5x11 Brown Plain, Burgundy Plain, Ivory Leaf Print and Ivory Text Print horizontally at 5.5". Cut one 5.5x8.5 horizontally at 7.75, 6 and 3.75". Trim the 3.75x5.5 horizontally at 1.75". Cut the 1.75x3.75 horizontally at 3.5 and 1.75". Trim the 2.25x5.5 horizontally at 4.25 and 2". Cut the 2x2.25 horizontally at 2". Trim the 1.75x5.5 horizontally at 3.75 and 2". Score and fold the 5.5x8.5 horizontally at 4.25". Stamp the 1.75x2" pieces with the "hope, wonder, joy" sentiment. Stamp the wreath onto the 2x2" squares.

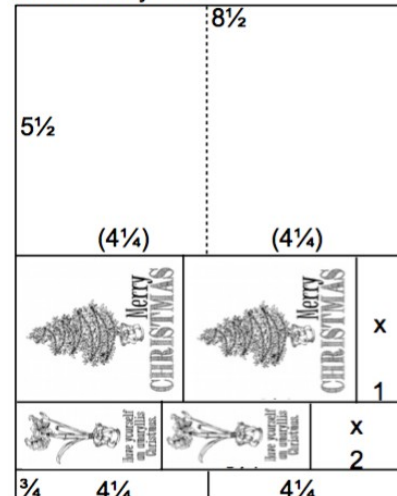


8½x11 Ivory Plain

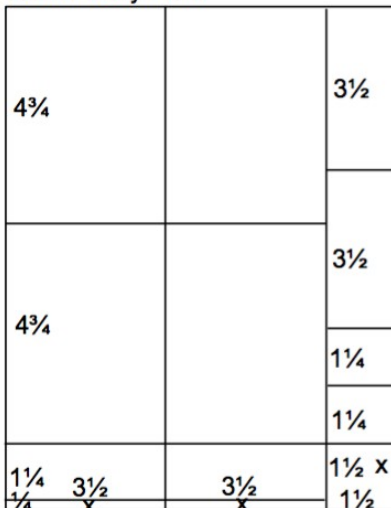


5. Trim one 8.5x11 Ivory Plain horizontally at 10.25, 8.75 and 5.5". Cut the 3.25x8.5 horizontally at 7.5 and 3.75". Trim the 1.5x8.5 horizontally at 6.5 and 3.25". Cut the .75x8.5 horizontally at 4.25". Score and fold the 5.5x8.5 horizontally at 4.25". Stamp the panels as shown in the diagram on the right.

8½x11 Ivory Plain



8½x11 Ivory Plain

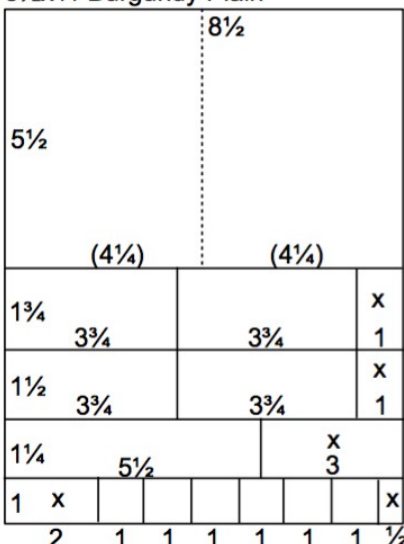


6. Trim one 8.5x11 Ivory Plain vertically at 7 and 3.5". Cut each 3.5x11 horizontally at 10.75, 9.5 and 4.75". Trim the 1.5x11 horizontally at 9.5, 8.25, 7 and 3.5". Stamp each panel as shown in the diagram on right.

8½x11 Ivory Plain



8½x11 Burgundy Plain



8. Trim one 8.5x11 Burgundy Plain horizontally at 10, 8.75, 7.25 and 5.5". Cut the 1.75x8.5 and 1.5x8.5 horizontally at 7.5 and 3.75". Trim the 1.25x8.5 horizontally at 5.5". Cut the 1x8.5 horizontally at 8, 7, 6, 5, 4, 3 and 2". Score and fold the 5.5x8.5 horizontally at 4.25".

