



December 2023 Club Scrap® Card Kit Luminary

To view a complete page assembly video tutorial, phone scan the QR code at right, click on, or carefully enter the following link: https://youtu.be/sXb_J3iwGlw



Materials and Tools:

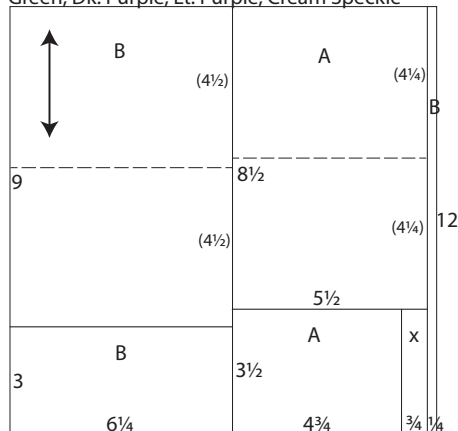
- ❑ Luminary CS® Card Kit
 - ❑ 12" Paper Trimmer
 - ❑ Accordion Pocket File
 - ❑ ScorPal
 - ❑ Adhesive
 - ❑ Tape
 - ❑ Foam Adhesive Tape
- ❑ 3x14" CS® Grid Ruler
 - ❑ Scissors
 - ❑ CS® Bookbinding Glue
 - ❑ Needle-tipped Glue Applicator
 - ❑ Staples and Stapler
 - ❑ Corner Chomper or Corner Punch

Measurement Conversions: .25 = 1/4"
 .5 = 1/2"
 .75 = 3/4"

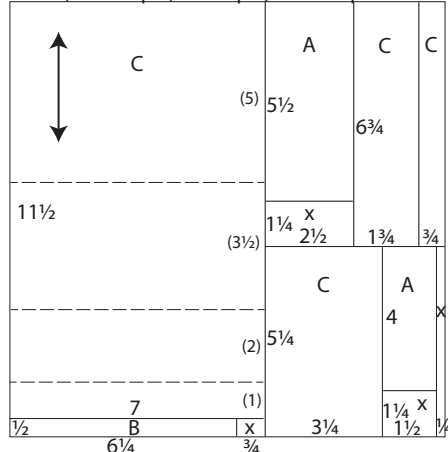
Preparation:

Trim the papers and cutparts into sections as indicated by the detailed instructions. While trimming, distribute the pieces to a pile or file designated for each card set as referenced in the diagram. *If there is an arrow on the paper trimming diagram, make sure the paper grain dips easily in the same direction as the arrow when placing the paper into the trimmer.*

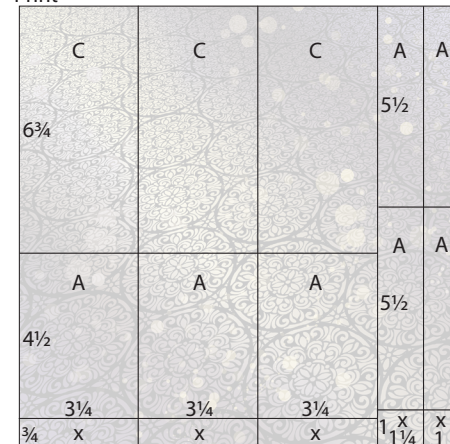
Green, Dk. Purple, Lt. Purple, Cream Speckle



Green, Dk. Purple, Lt. Purple, Cream Speckle



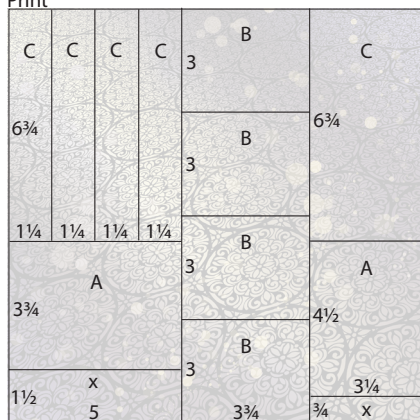
Print



1. Trim one Green, Dk. Purple, Lt. Purple and Cream Speckle at 11.75 and 6.25".
 Rotate and cut the 6.25x12 at 9".
 Trim the 5.5x12 at 8.5".
 Cut the 3.5x5.5 at 4.75".
Score each 6.25x9 horizontally at 4.5".
Score each 5.5x8.5 horizontally at 4.25".
2. Cut one Green, Dk. Purple, Lt. Purple and Cream Speckle at 7".
 Rotate and trim the 7x12 at 11.5".
 Cut the .5x7 at 6.25".
 Cut the 5x12 at 6.75".
 Trim the 5x6.75 vertically at 4.25 and 2.5".
 Cut the 2.5x6.75 at 5.5".
 Trim the 5x5.25 vertically at 4.75 and 3.25".
 Trim the 1.5x5.25 at 4".
Score each 7x11.5 at 5 and 10.5.
Flip the paper bottom to top and score at 8.5".
3. Trim one Print at 11, 9.75, 6.5 and 3.25".
 Rotate and cut each 3.25x12 at 11.25 and 6.75".
 Trim the 1.25x12 at 11 and 5.5".
 Cut the 1x12 at 11 and 5.5".

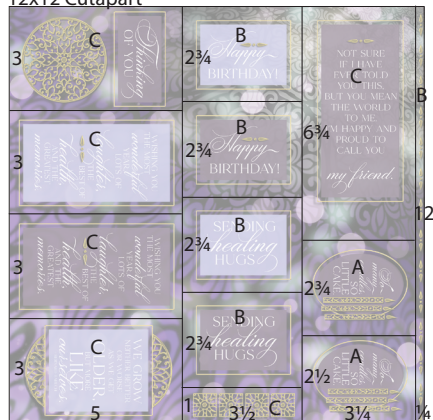


Print



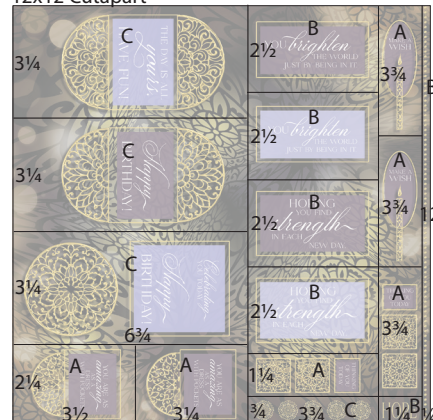
- Cut one Print at 8.75 and 5".
 Rotate and trim the 5x12 at 10.5 and 6.75".
 Cut the 5x6.75 vertically at 3.75, 2.5 and 1.25".
 Trim the 3.75x12 at 9, 6 and 3".
 Cut the 3.25x12 at 11.25 and 6.75".

12x12 Cutapart



- Prior to trimming, remove approximately 1/8" from the perimeter of the cutapart. Use the intersecting marks on each corner as a cutting guide.
 Trim the Cutapart at 11.75, 8.5 and 5".
 Rotate and cut the 5x12 at 9, 6 and 3".
 Trim the 3.5x12 at 11, 8.5, 5.5 and 2.75".
 Cut the 3.25x12 at 9.5 and 6.75".

12x12 Cutapart



- Prior to trimming, remove approximately 1/8" from the perimeter of the cutapart. Use the intersecting marks on each corner as a cutting guide.
 Cut the Cutapart at 11.75, 10.5 and 6.75".
 Rotate and trim the 6.75x12 at 9.75, 6.5 and 3.25".
 Cut the 2.25x6.75 at 3.5".
 Trim the 3.75x12 at 11.25, 10, 7.5, 5 and 2.5".
 Cut the 1.25x12 at 11.25, 7.5 and 3.75".



Set A: 4¼x5½" Cards

Assembly steps: Nest the 2.5x5.5 strip on the left side of the folded card base. Center the 3.25x4.5 printed panel onto the 3.5x4.75" panel and add the .75x3.5" strip to the bottom portion of the panel. Wrap ribbon around the strip and secure ends to the back. Center the nested panels onto the card base. Round the top corners of the 1.25x3.75" tag insert and staple a piece of folded ribbon to the top. Round the same corners of a 1.5x4" panel and nest with the tag. Insert the tag into the organza bag and adhere to the lower left corner of the card. Adhere a gold medallion to the printed panel on two of the cards. Add the inner sentiment and any remaining elements to the inside of the card, as shown.



Inside: "So many candles, so little cake."

Inside: "So many candles, so little cake."



Inside: "You are as amazing as a dress with pockets."

Inside: "You are as amazing as a dress with pockets."



Set B: 4½x6¼" Cards

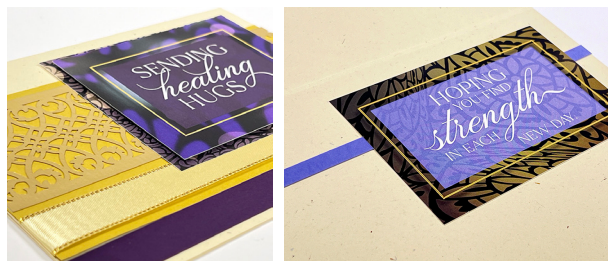
Assembly steps: Trim the ends from the Laser Cut Border to create a 6.25" strip and nest onto the 3x6.25 panel, about 1/8" from one edge. Wrap the remaining portion of the panel with gold-edged satin ribbon. Adhere the .5x6.25" strip to the bottom of the card, about 1/8" from the edge. Add the prepared 3x6.25" panel directly above the strip. Nest the 2.75x3.5" cutapart sentiment onto the 3x3.75" printed panel with foam adhesive and attach to the upper right corner of the card. Add remaining pieces and the inner sentiment to the inside of the card, as shown.



Inside: "Hope" and "Hoping you find strength in each new day."



Inside: "Hoping you find strength in each new day."



Inside: "You brighten the world just by being in it."



Inside: "You brighten the world just by being in it."

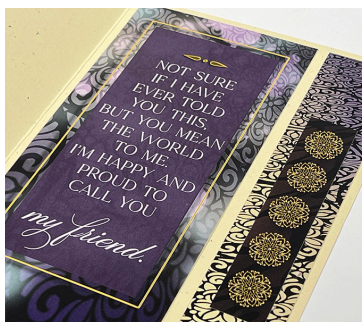


Set C: 5x7" Cards

Assembly steps: Accordion fold the card base. Add ribbon to the .75x6.75" panel and adhere to the front of the narrowest card flap. Add the 3.25x6.75" Print to the left pleat of the card. Nest the 1.75x6.75" panel onto the right pleat. Adhere the 1.25x6.75" Print to the right edge of the inner card base, and fill the remaining area of the inside of the card with the 3.25x6.75" sentiment. Nest the 3x5" outer sentiment onto the 3.25x5.25" panel and adhere to the narrowest card flap, centered with the card base. Add the gold medallion embellishment to two of the cards, as shown.



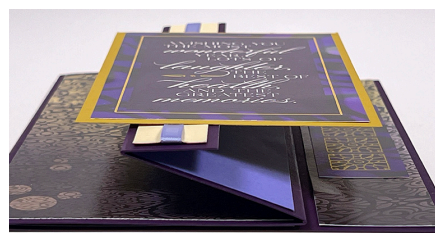
Inside: "I'm happy and proud to call you my friend."



Inside: "Celebrating you today. Happy birthday!"



Inside: "The day is all yours. Have fun!"



Inside: "Celebrating you today. Happy birthday!"

