



Assembly Line Cardmaking

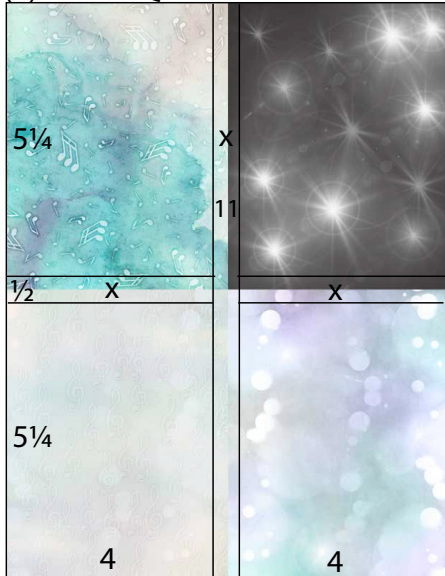
December 2017 Club Stamp

A Night at the Met

Trimming and scoring instructions for the *A Night at the Met* Club Stamp collection:

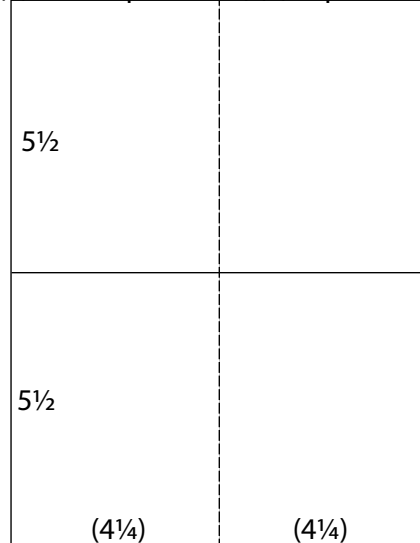
(Makes 12 cards and tray with slider cover.)

(2) 8½x11 Quad Prints



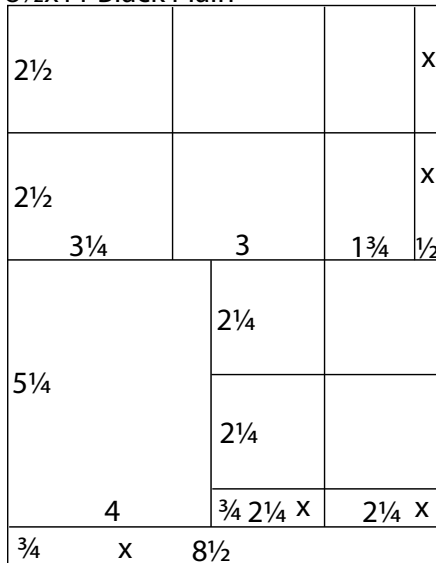
1. **Trim** one Quad Print vertically at 4.5 and 4". Cut each 4x11 horizontally at 5.75 and 5.25".

8½x11 Silver Plain, Black Plain, (2) Dk. Purple Plains, (2) Aqua Plains



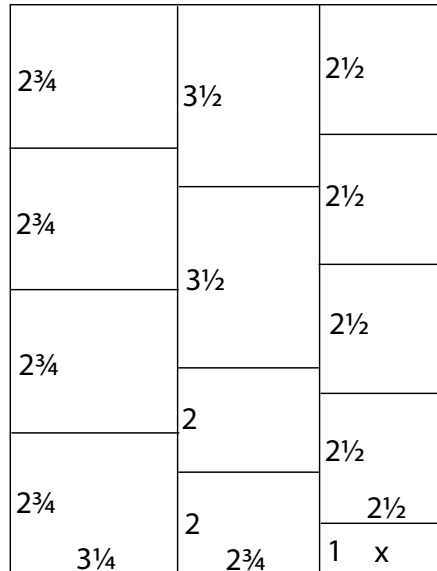
2. **Score** one Silver, one Black, two Dk. Purple, and two Aqua Plains vertically at 4.25". **Trim** at 5.5". Fold along each score line to make a total of twelve card bases.

8½x11 Black Plain



3. **Trim** one Black Plain horizontally at 10.25, 5 and 2.5". Cut each 2.5x8.5 horizontally at 8, 6.25 and 3.25". Trim the 5.25x8.5 horizontally at 6.25 and 4". Cut each 2.25x5.25 horizontally at 4.5 and 2.25"

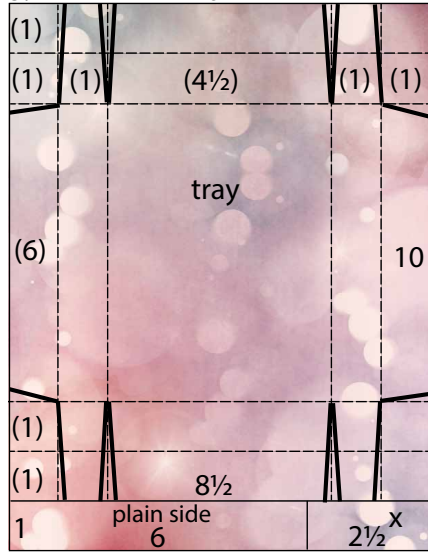
8½x11 Silver Plain



4. **Trim** one Silver Plain vertically at 6 and 3.25". Cut the 3.25x11 horizontally at 8.25, 5.5 and 2.75". Trim the 2.75x11 horizontally at 9, 7 and 3.5". Cut the 2.5x11 horizontally at 10, 7.5, 5 and 2.5".

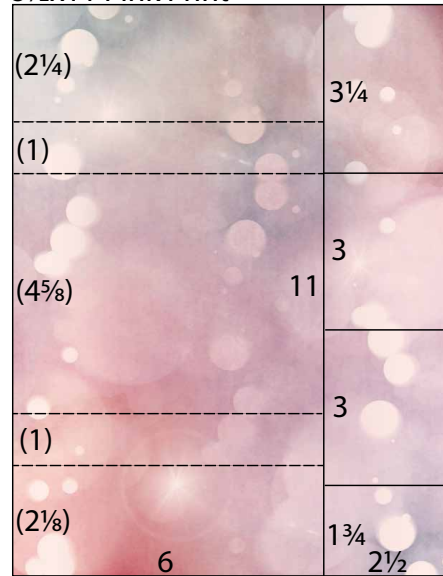


8½x11 Pink Print



5. **Trim** one Pink Print horizontally at 10". Cut the 1x8.5 horizontally at 6". **Score** 1 and 2" from each edge of the 8.5x10. Cut along lines as indicated in the diagram to form flaps and tabs. Fold and adhere the left and right flaps to form side walls. Tuck in the tabs and fold over the top and bottom flaps to form the end walls of the tray.

8½x11 Pink Print



6. **Trim** one Pink Print vertically at 6". Cut the 2.5x11 horizontally at 9.25, 6.25 and 3.25". **Score** the 6x11 horizontally at 2.25, 3.25, 7.875 and 8.875". Fold along score lines and wrap around the tray. Use the 1x6" piece from the previous sheet to complete the sleeve.

Visit the blog at www.clubscrap.com/1217-alc to view more card assembly instructions.



A Night at the Met Club Stamp
December 2017

