



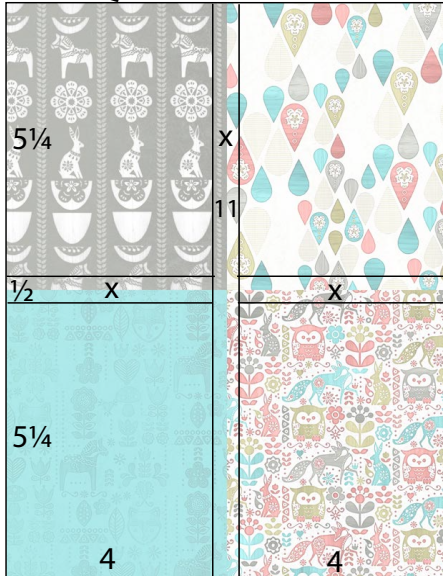
# Assembly Line Cardmaking

## October 2017 Club Stamp

# Scandinavia

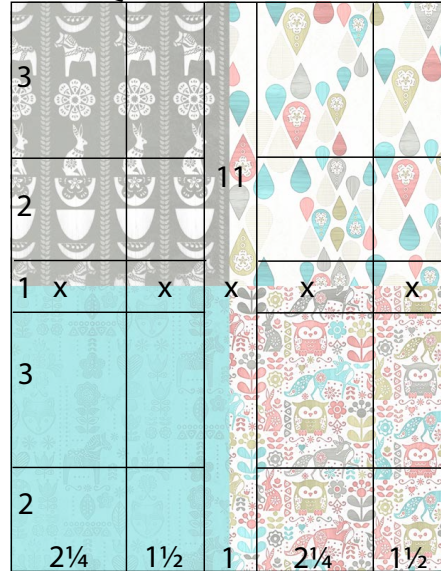
Trimming and scoring instructions for the *Scandinavia* Club Stamp collection:  
(Makes 12 cards and a gift box with lid.)

8½x11 Quad Print



1. Trim one Quad Print vertically at 4.5 and 4". Cut each 4x11 horizontally at 5.75 and 5.25".

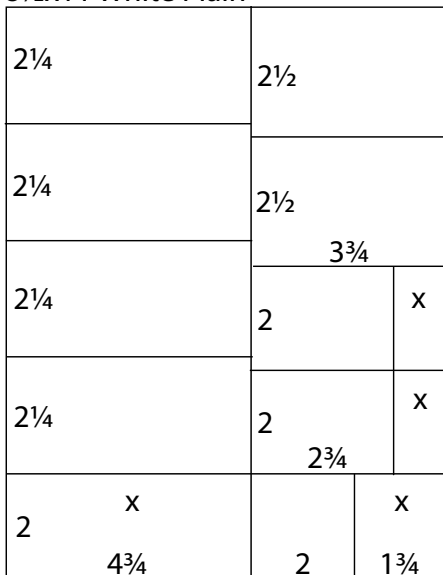
8½x11 Quad Print



2. Trim one Quad Print vertically at 7, 4.75, 3.75 and 2.25". Cut each 2.25x11 and 1.5x11 strip horizontally at 9, 6, 5 and 3".

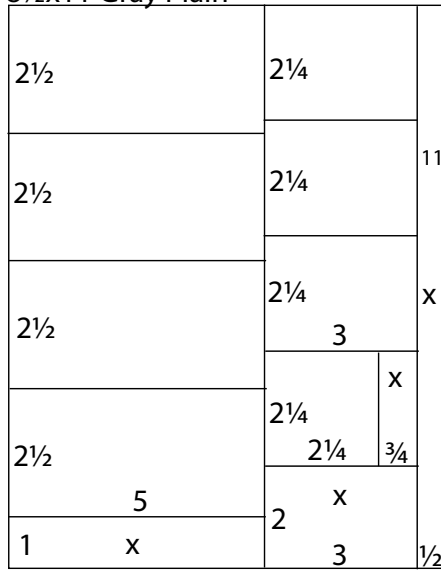


8½x11 White Plain



3. **Trim** one White Plain vertically at 4.75". Cut the 4.75x11 horizontally at 9, 6.75, 4.5 and 2.25". Cut the 3.75x11 horizontally at 9, 7, 5 and 2.5". Trim two 2x3.75 pieces horizontally at 2.75". Cut the 2x3.75 horizontally at 2".

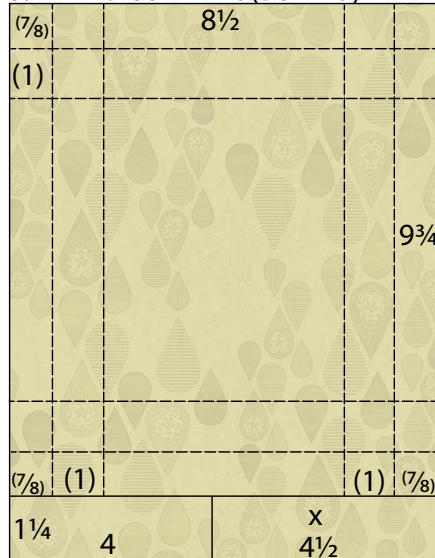
8½x11 Gray Plain



4. **Trim** one Gray plain vertically at 8 and 5". Cut the 5x11 horizontally at 10, 7.5, 5 and 2.5". Trim the 3x11 horizontally at 9, 6.75, 4.5 and 2.25". Cut one 2.25x3 horizontally at 2.25".

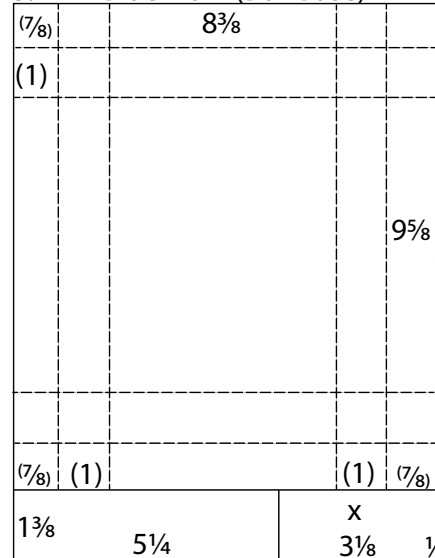


8½x11 Green Print (Box Lid)



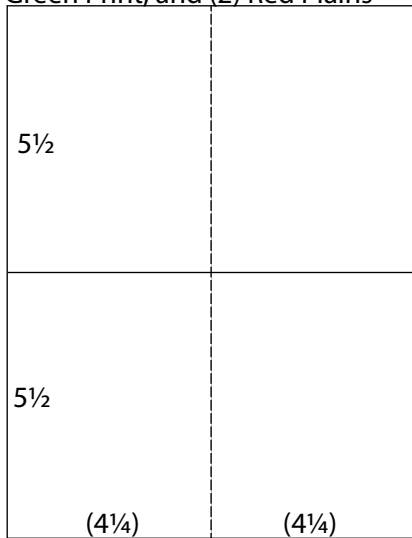
5. **Trim** one Green Print horizontally at 9.75". Cut the 1.25x8.5 horizontally at 4". **Score** the 8.5x9.75 at 7/8 and 1-7/8" from each outside edge.

8½x11 Blue Plain (Box Base)



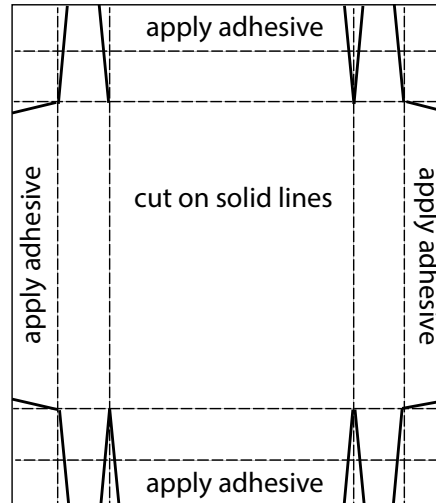
6. **Trim** one Blue Plain vertically at 8-3/8". Trim the 8-3/8x11 horizontally at 9-5/8". Cut the 1-3/8x8-3/8 horizontally at 5.25". **Score** the 8-3/8x9-5/8 at 7/8 and 1-7/8" from each outside edge.

8½x11 Blue Pl., White Pl., Gray Pl., Green Print, and (2) Red Plains



7. **Score** one Blue Plain, one White Plain, one Gray Plain, one Green Print and two Red Plains vertically at 4.25". **Cut** horizontally at 5.5". Fold each 5.5x8.5 piece in half on the score line to make twelve card bases.

Box Lid and Base



8. Cut along solid lines as shown in the diagram. Fold along score lines to prepare the paper. Apply adhesive to the outside flaps. Fold over the flaps on the left and right sides and turn them up to form the long walls of the box. Turn in the tabs at the top and bottom at a 90 degree angle. Bring the top and bottom flaps up and over the tabs to finish the box.



Scandinavia Club Stamp October 2017

clubs Scrap.com



Visit the blog at [www.clubscrap.com/1017-alc](http://www.clubscrap.com/1017-alc) to view specific card assembly instructions.

