



# September 2021 Club Scrap® Card Kit

## Farmstand

### Materials and Tools:

- Farmstand CS® Card Kit
  - 12" Paper Trimmer
  - Accordion Pocket File
  - ScorPal
  - Adhesive
  - Tape
- Foam Adhesive
  - 3x14" CS® Grid Ruler
  - Scissors
  - CS® Bookbinding Glue
  - Needle-tipped Glue Applicator
  - Crop-A-Dile or 1/8" Hole Punch

**Measurement Conversions:** .125 = 1/8"    .375 = 3/8"    .625 = 5/8"    .875 = 7/8"  
 .25 = 1/4"    .5 = 1/2"    .75 = 3/4"

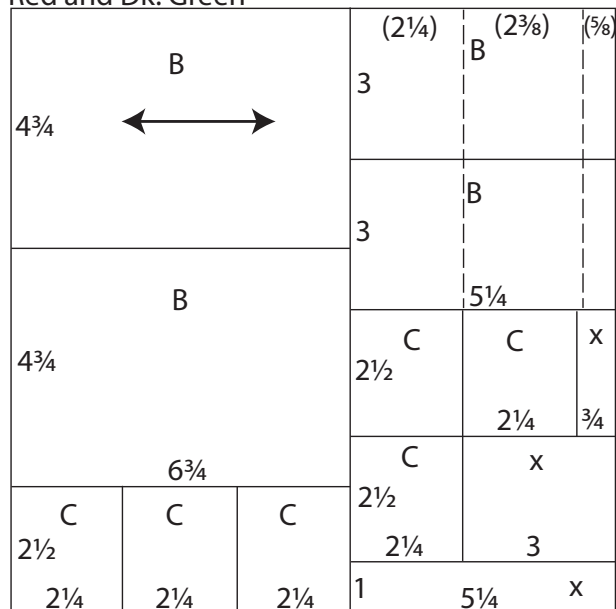
### Preparation:

Trim the papers and cutaparts into sections as indicated by the detailed instructions. While trimming, distribute the pieces to a pile or file designated for each card set as referenced in the diagram. *Prior to trimming the cutaparts, remove approximately 1/8" from the perimeter of each sheet, using the intersecting guidelines on each corner as a cutting guide.*

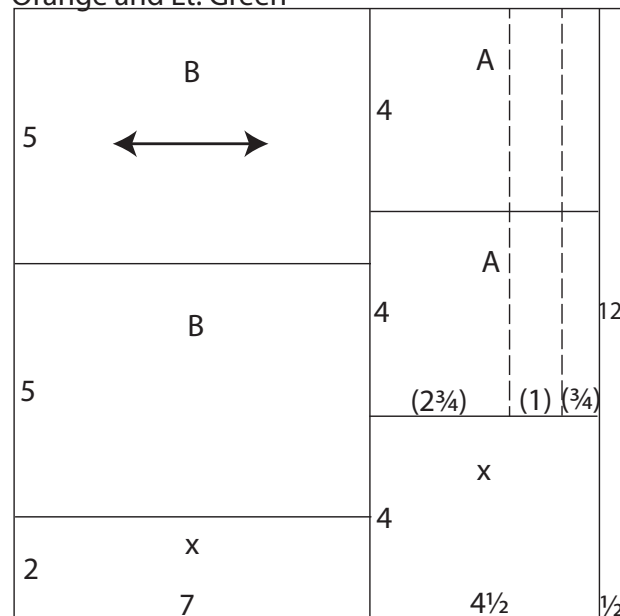
If there is an arrow on the paper trimming diagram, make sure the paper grain dips easily in the same direction as the arrow when placing the paper into the trimmer.

Please click on or enter the following to view a helpful card assembly tutorial: <https://youtu.be/5kitCEwe2Cs>

Red and Dk. Green



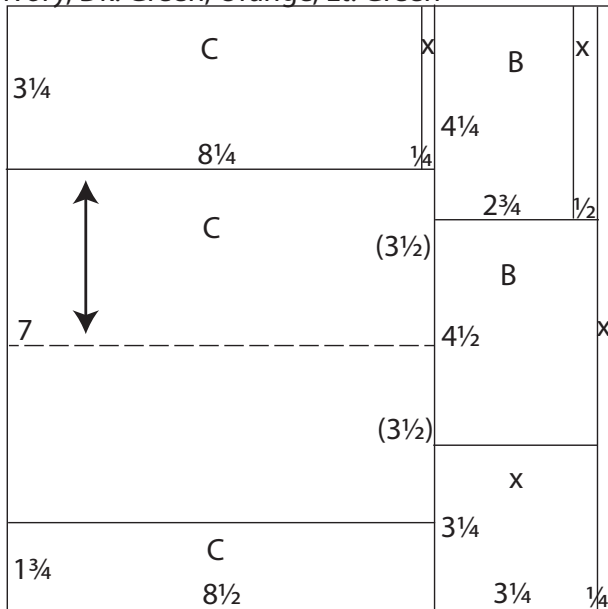
Orange and Lt. Green



1. Trim one Red and one Dk. Green at 6.75". Cut the 6.75x12 at 9.5 and 4.75". Trim the 2.5x6.75 at 4.5 and 2.25". Cut the 5.25x12 at 11, 8.5, 6 and 3". Trim one 2.5x5.25 at 4.5 and 2.25". Cut the other 2.5x5.25 at 2.25". Score each 3x5.25 horizontally at 2.25 and 4.625.
2. Cut one Orange and one Lt. Green at 11.5 and 7". Trim the 7x12 at 10 and 5". Cut the 4.5x12 at 8 and 4". Score two 4x4.5" pieces horizontally at 2.75 and 3.75".

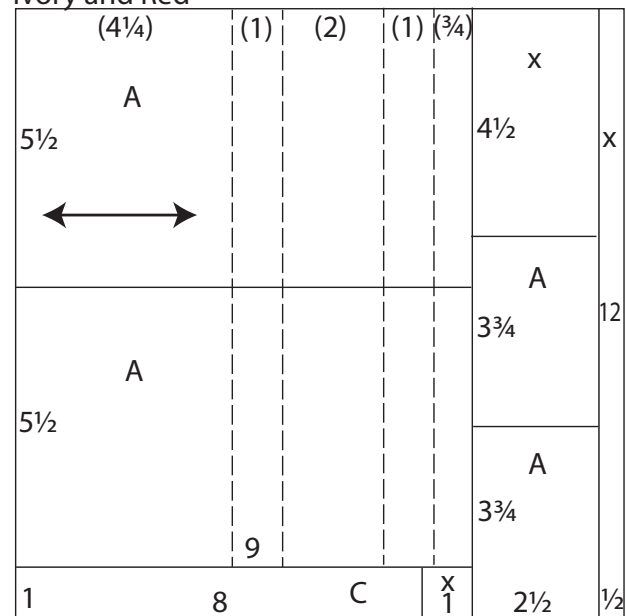


Ivory, Dk. Green, Orange, Lt. Green



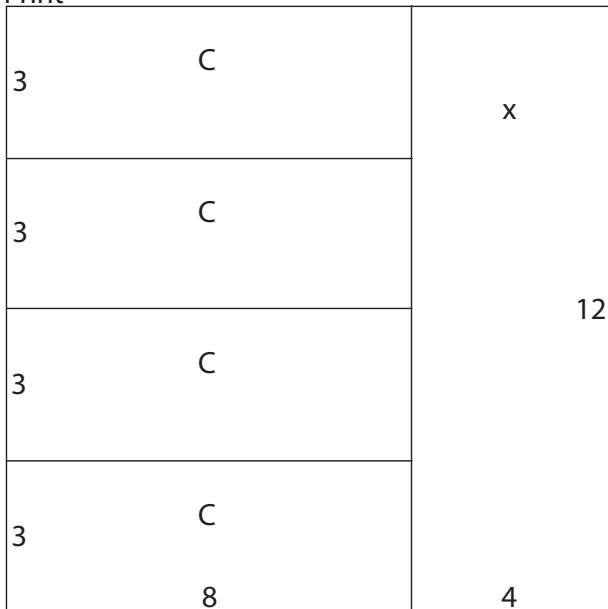
- Trim one Ivory, Dk. Green, Orange and Lt. Green at 11.75 and 8.5". Cut the 8.5x12 at 10.25 and 3.25". Trim the 3.25x8.5 at 8.25". Cut the 3.25x12 at 8.75 and 4.25". Trim the 3.25x4.25 vertically at 2.75". Score each 7x8.5 vertically at 3.5".

Ivory and Red



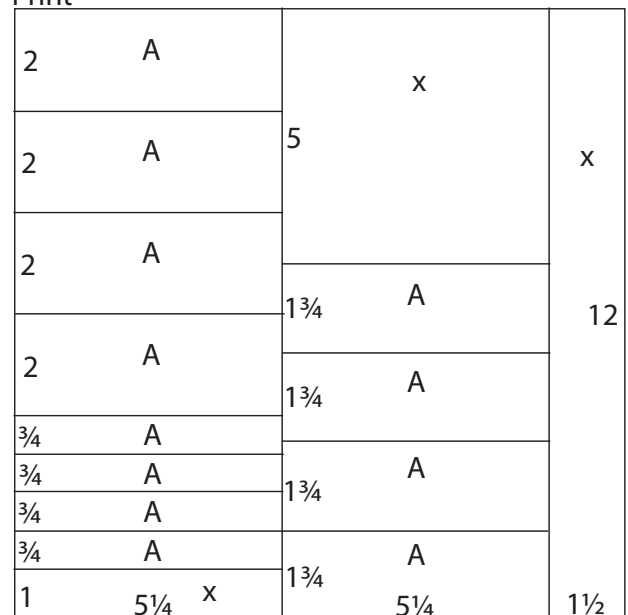
- Cut one Ivory and one Red at 11.5 and 9. Trim the 9x12 at 11 and 5.5". Cut the 1x9 at 8". Trim the 2.5x12 at 8.25 and 4.5". Score each 5.5x9 horizontally at 4.25, 5.25, 7.25 and 8.25".

Print



- Trim one Print at 8". Cut the 8x12 at 9, 6 and 3".

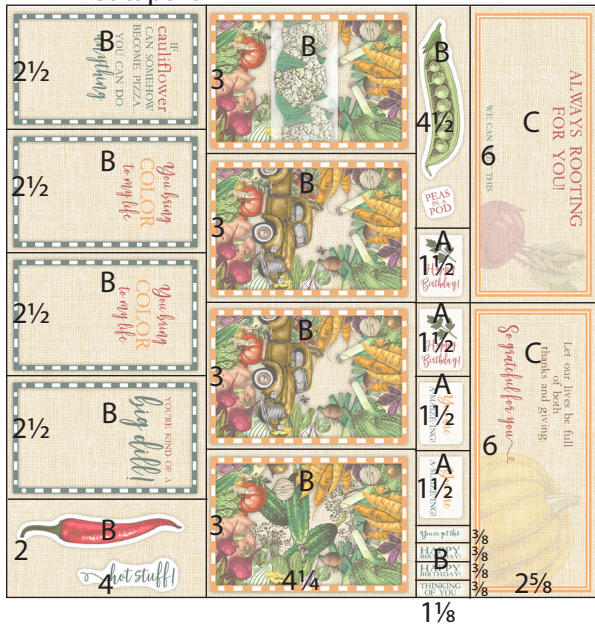
Print



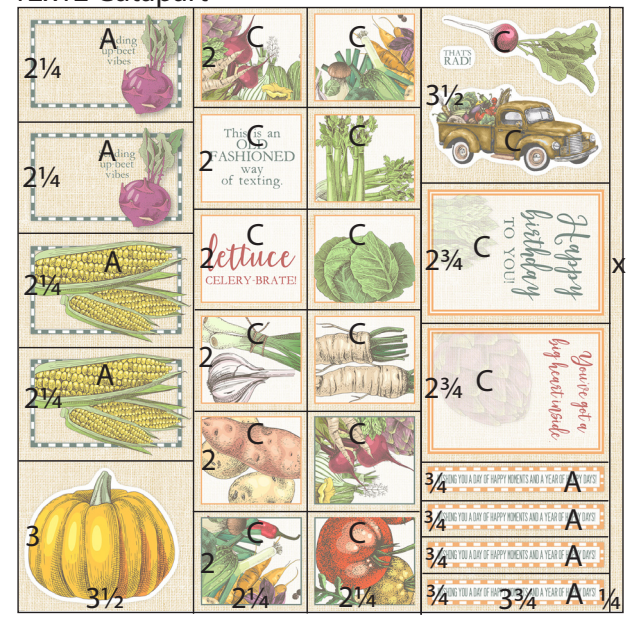
- Cut one Print at 10.5 and 5.25". Trim one 5.25x12 at 11, 10.25, 9.5, 8.75, 8, 6, 4 and 2". Cut one 5.25x12 at 10.25, 8.5, 6.75 and 5".



12x12 Cutpart



12x12 Cutpart



7. Trim one Cutpart at 9.375, 8.25 and 4". Cut the 4x12 at 10, 7.5, 5 and 2.5". Trim the 3x12 at 9, 6 and 3". Cut the 1.125x12 at 11.625, 11.25, 10.875, 10.5, 9, 7.5, 6 and 4.5". Trim the 2.625x12 at 6".

8. Trim one Cutpart at 11.75, 8, 5.75 and 3.5". Cut the 3.5x12 at 9, 6.75, 4.5 and 2.25". Trim each 2.25x12 at 10, 8, 6, 4 and 2". Cut the 3.75x12 at 11.25, 10.5, 9.75, 9, 6.25 and 3.5".

Set A: 4 1/4 x 5 1/2" Cards



Top: "Wishing you a day of happy moments and a year of happy days!"



Top: "Wishing you a day of happy moments and a year of happy days!"



Side: "Wishing you a day of happy moments and a year of happy days!"



Side: "Wishing you a day of happy moments and a year of happy days!"

Assembly steps for all cards:

Fold along all score lines of the 5.5x9" card base. Adhere the .75" tab to the back wall of the card to form a rectangular box shape. Nest a printed panel onto each scored section of the card base. Fold along the score lines of the 4x4.5" panel. Apply adhesive to the .75 tab and the opposite edge of the panel. Add to the card as shown, so the card flattens easily for mailing and stands up for display. Nest the sentiment onto the 2.5x3.75" panel and adhere to the front of the card. Add the narrow .75x3.75" sentiment to the top edge (or side) of the pop-up panel. Round two corners of the 1.125x1.5" panel and nest onto the laser cut wood tag. Top with ribbon and adhere to the card.



Set B: 5x7" Split Flap Tent Cards



Inside: "Happy Birthday"



Inside: "Happy Birthday"



Inside: "Thinking of you."



Inside: "You've got this."

**Assembly steps for all cards:** Nest a cutapart onto the 3.25x4.5" panel and add to the left edge of the 4.75x6.75" panel, centered top to bottom. Fold along the score lines of the 3x5.25" panel. Apply adhesive to the small scored area and add to the top edge of the 4.75x6.75" panel, centered within the remaining open space. Apply adhesive to the scored area at the bottom of the 3x5.25" piece, and layer with a 2.75x4.5" panel. Center a cutapart sentiment and add a bow to the bottom.

To create a "stopper" for the tent card, cut the 1.75x6" strip of Kraft folding board into eight 1/2" pieces. (A scrap will remain.) Laminate the strips together in pairs with bookbinding glue. Punch a hole in each edge and tie with red jute. Adhere the corresponding sentiment onto the handmade tag and adhere to the inside of the card.

Add miscellaneous cutaparts to the inside of the card, if desired.



**Set C: 3½x8½” Slimline Cards**

**Assembly steps for all cards:** Nest the 3x8 and 3.25x8.25” panels onto the folded card base. If desired, add the 1x8” strips to the horizontal cards. Nest the cutaparts onto the 2.25x2.5” panels and add to the card with foam adhesive. Thread red jute onto the bronze sunflower charm and add to the card. Finish with a sentiment and assorted paper remnants on the inside of the card.



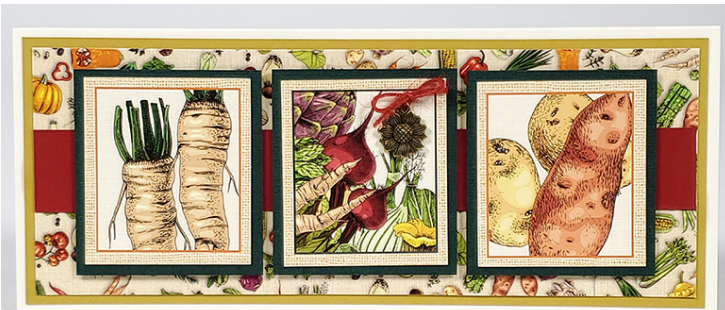
Inside: "So grateful for you."



Inside: "You've got a big heart inside."



Inside: "Happy birthday to you!"



Inside: "Always rooting for you!"

