



Take Wing

Flip Photo Easel Project
by Kay Williamson of CS®



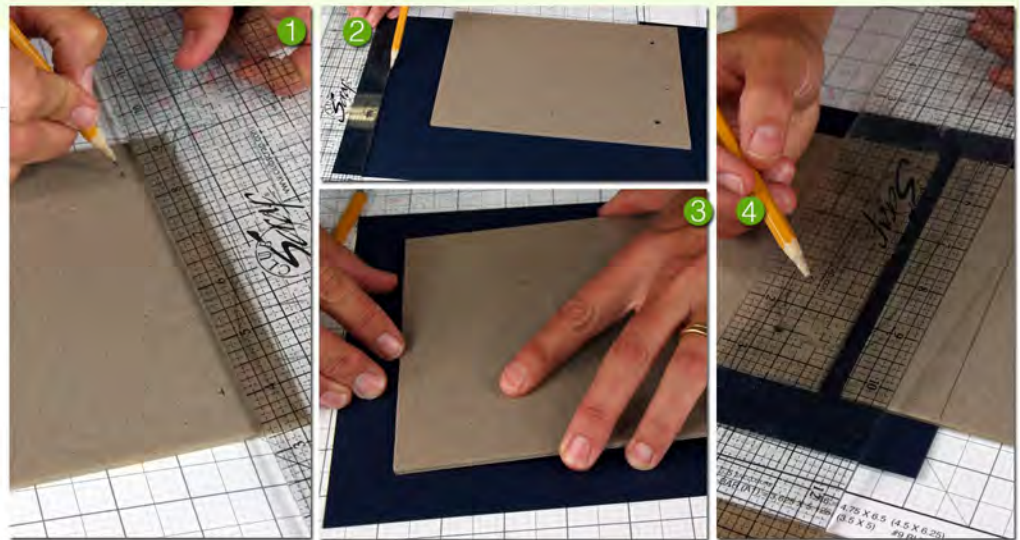
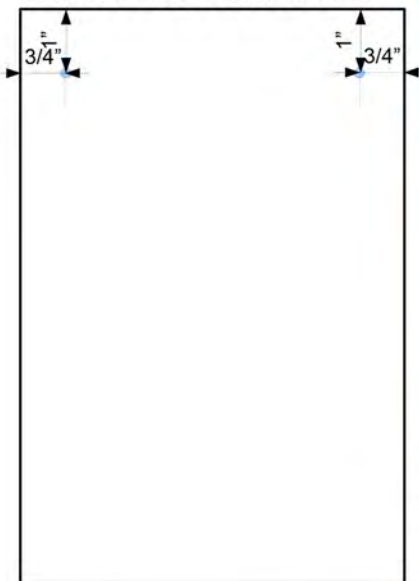
Project Kit:

- (2) 6x9" Book Board Covers
- 8x12" Blue Outside Wrap
- 8x8.375" Blue Outside Wrap
- 5.75x12" Blue Inside Wrap
- 5.75x6.125" Blue Inside Wrap
- 3x6" Blue Easel
- (12) 5.5x6.75" Hanging Pages (3 each of 4 colors)
- (12) 4.25x5.25 Photo Mattes (3 each of 4 colors)
- 2-Ring Binder
- (2) Brads

Tools and Materials:

- Crop-A-Dile®
- CS® Bookbinding Glue
- Foam Brush
- CS® Acrylic Grid Ruler
- Pencil
- Scissors

6x9 Book Board Cover



1. Use a ruler and pencil to measure and mark 1" from one short edge and 3/4" from the long edges of one 6x9" Book Board Cover. Use a Crop-A-Dile to punch a 3/8" hole at each mark.

2. Place the 8x12" Blue Outside Wrap horizontally on your work surface. Draw a placement guideline 1" from the bottom and left edges.

3. Brush glue onto the punched book board cover and place onto the Blue Outside wrap, aligning the non-punched edges of the cover with the pencil guidelines.

4. Temporarily place the second 6x9" Book Board Cover next to the first with a 1/2" gutter between the two pieces. (Be certain of the gutter measurement. If it is too narrow, the easel will not be able to close completely.) Use the ruler and pencil to mark the location of the edge of the outside wrap onto the book board.

5. **Brush** glue onto the book board within the marked area and replace onto the cover wrap, using the ruler to confirm the gutter size.

6. **Add** glue to the remaining outside cover and attach the 8x8.375 Blue Outside Wrap.

7. **Trim** the four outside corners of the wrap at a 45 degree angle, being sure to leave at least 1/8" of paper extending beyond the tip of each corner.

8. **Pre-wrap** and burnish the four paper flaps around the book boards. Glue the long flaps into place and tuck in excess paper at each corner. Glue short flaps.

9. **Pierce** through the cover at the pre-punched holes, and use the tip of a pencil to push the paper into the holes.

10. **Glue** the 5.75x12" and 5.75x6.125" Blue Inside Wraps to the inside of the cover, leaving a 1/8" margin around the outside edges. Pierce through the paper at the pre-punched holes.

11. **Attach** the 2-ring binder to the outside of the wrapped cover with silver brads.

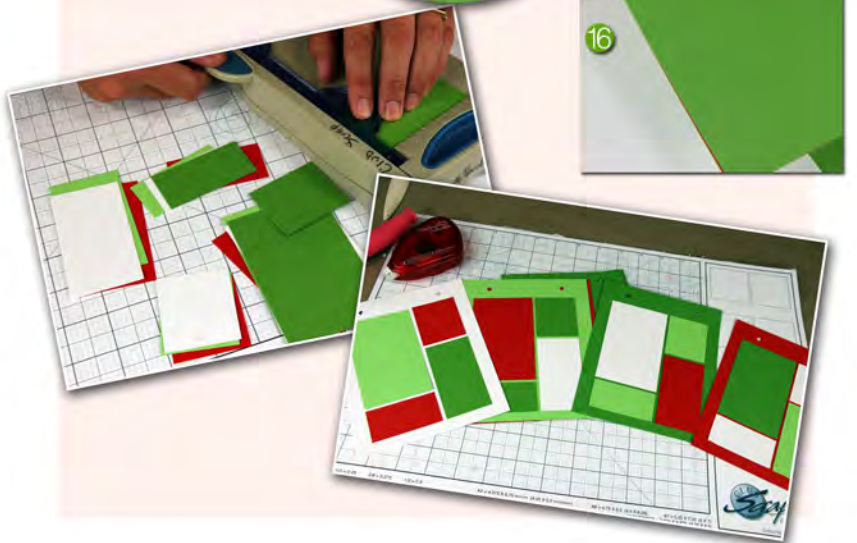
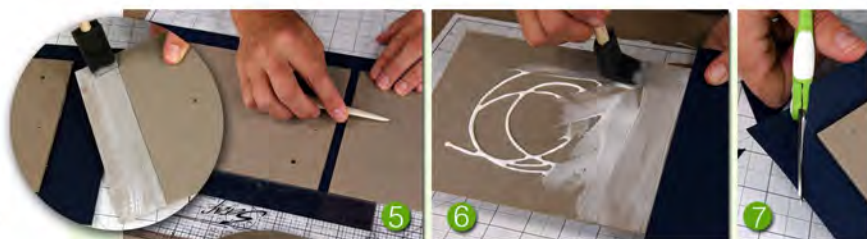
12. **Score** the 3x6" Blue Easel horizontally at 1, 3, and 5". Make a valley fold on each scoreline.

13. **Brush** glue onto one 1" scored area and center it onto the bottom edge of the inside wrapped cover.

14. **Brush** glue onto the other 1" tab and attach to the other inside edge of the cover.

15. **Prepare** one 5.5x6.75" Hanging Pages by marking holes for the binder rings 1/2" from the top edge and 1-3/16" from the left and right edges. (Mark halfway between 1-1/8 and 1-1/4".)

16. **Punch** holes in the marked page and use as a template for the eleven remaining pages.



Optional Decorative Panels

1. **Trim** one 4.25x5.25 Photo Matte of each color vertically at 2.5". Trim the 2.5x5.25 horizontally at 4". Cut the 1.75x5.25 horizontally at 3.25". Stack the trimmed pieces into piles according to size.

2. **Interchange** the colors and attach the trimmed panels to the hanging pages as shown. Attach the eight remaining 4.25x5.25" panels to the rest of the hanging pages. Add photographs, stamped artwork and embellishments to the pages, or use as a monthly desktop calendar.