



# August 2022 Club Scrap® Card Kit

## Mediterranean

### Materials and Tools:

- ❑ Mediterranean CS® Card Kit
  - ❑ 12" Paper Trimmer
  - ❑ Accordion Pocket File
  - ❑ ScorPal
  - ❑ Adhesive
  - ❑ Tape
- ❑ Foam Adhesive Tape
  - ❑ 3x14" CS® Grid Ruler
  - ❑ Scissors
  - ❑ CS® Bookbinding Glue
  - ❑ Needle-tipped Glue Applicator
  - ❑ Waxed Linen Thread or Waxed Cord

**Measurement Conversions:** .25 = 1/4"  
 .5 = 1/2"  
 .75 = 3/4"

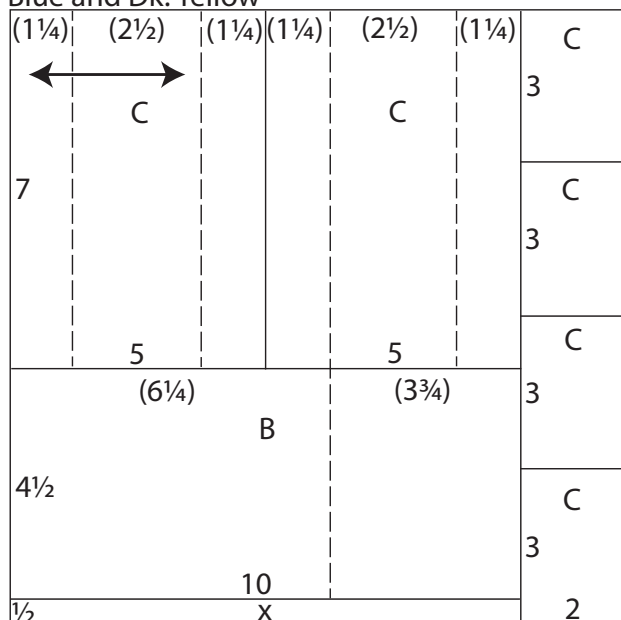
### Preparation:

Trim the papers and cutaparts into sections as indicated by the detailed instructions. While trimming, distribute the pieces to a pile or file designated for each card set as referenced in the diagram. *Prior to trimming the cutaparts, remove approximately 1/8" from the perimeter of each sheet, using the intersecting guidelines on each corner as a cutting guide.*

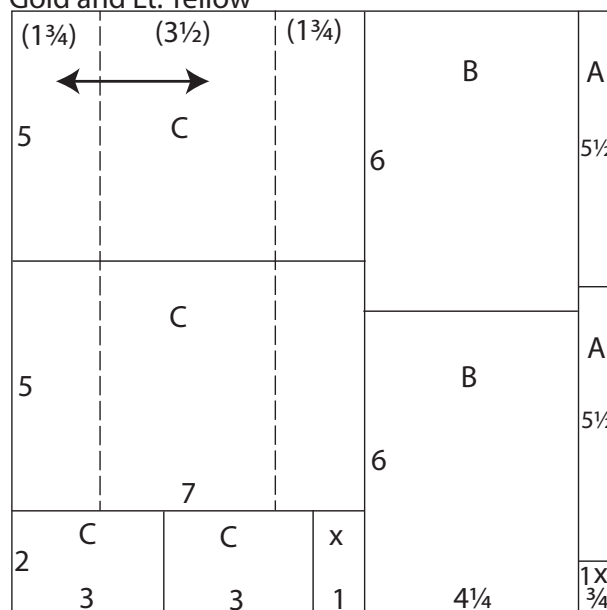
If there is an arrow on the paper trimming diagram, make sure the paper grain dips easily in the same direction as the arrow when placing the paper into the trimmer.

Please click on or enter the following to view a helpful card assembly tutorial: <https://youtu.be/1D3vsbUdTIE>

Blue and Dk. Yellow



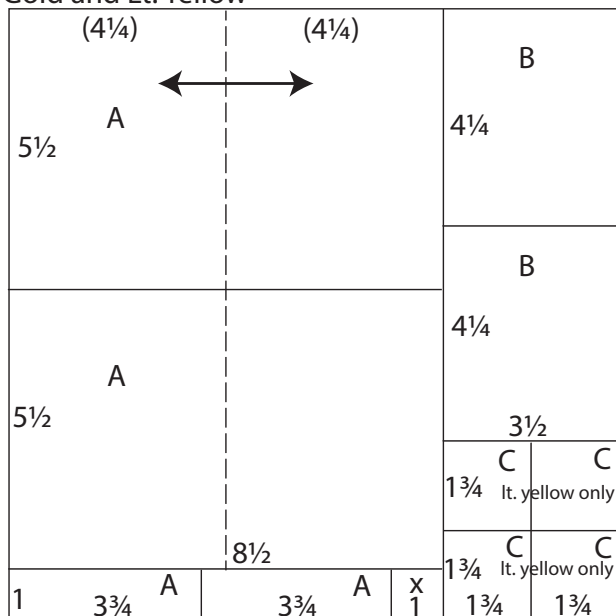
Gold and Lt. Yellow



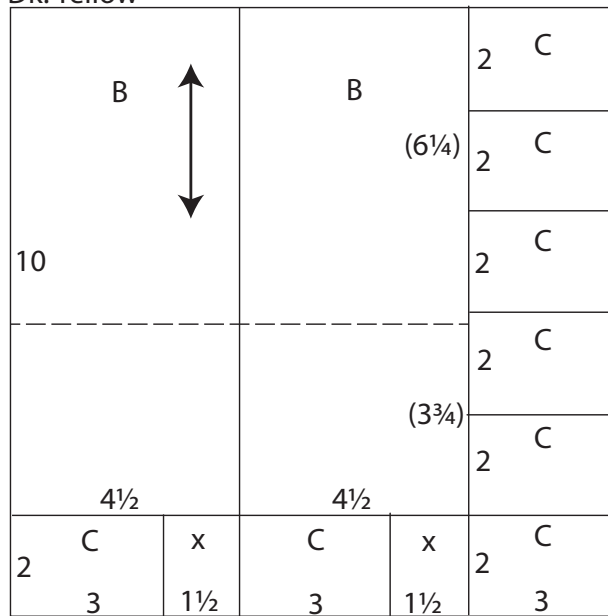
1. Trim Blue and Dk. Yellow at 10". Cut the 10x12 at 11.5 and 7". Trim the 7x10 at 5". Cut the 2x12 at 9, 6 and 3". Score each 5x7 vertically at 1.25 and 3.75". Score each 4.5x10 at 6.25".
2. Cut one Gold and Lt. Yellow at 11.25 and 7". Trim the 7x12 at 10 and 5". Cut the 2x7 at 6 and 3". Trim the 4.25x12 at 6". Cut the .75x12 at 11 and 5.5". Score each 5x7 horizontally at 1.75 and 5.25".



Gold and Lt. Yellow



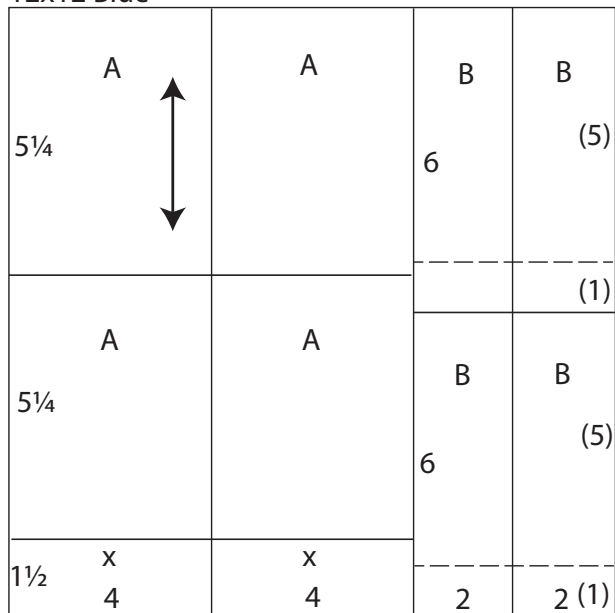
Dk. Yellow



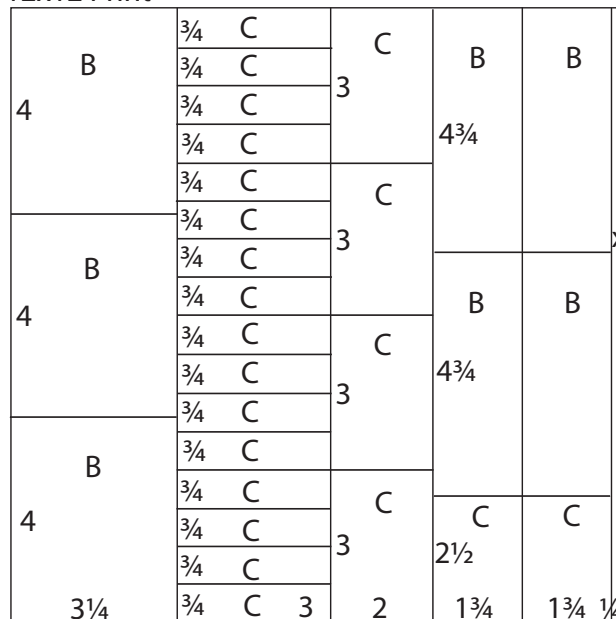
- Trim one Gold and Lt. Yellow at 8.5". Cut the 8.5x12 at 11 and 5.5". Trim the 1x8.5 at 7.5 and 3.75". Cut the 3.5x12 at 10.25, 8.5 and 4.25". Trim each 1.75x3.5 Lt. Yellow at 1.75" and file in pocket C. (Gold not used.) Score each 5.5x8.5 horizontally at 4.25".

- Cut one Dk. Yellow at 9 and 4.5". Trim each 4.5x12 at 10". Cut each 2x4.5 at 3". Cut the 3x12 at 10, 8, 6, 4 and 2". Score each 4.5x10 at 6.25".

12x12 Blue



12x12 Print

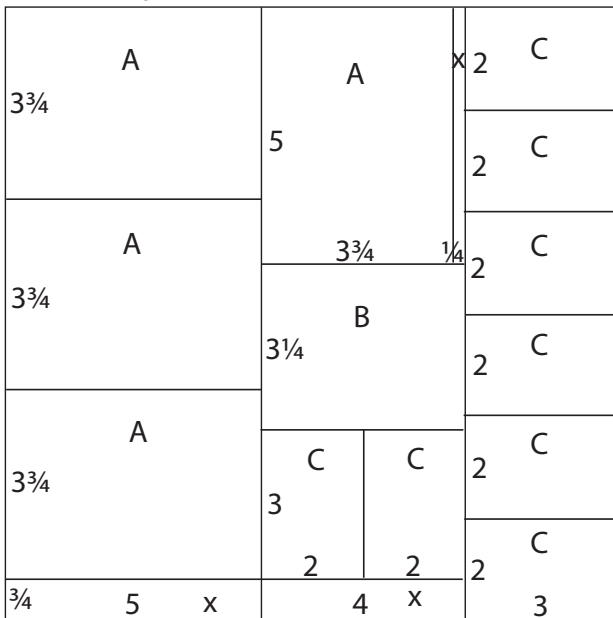


- Trim one Blue at 10, 8 and 4". Cut each 4x12 at 10.5 and 5.25". Trim each 2x12 at 6". Score each 2x6 at 5".

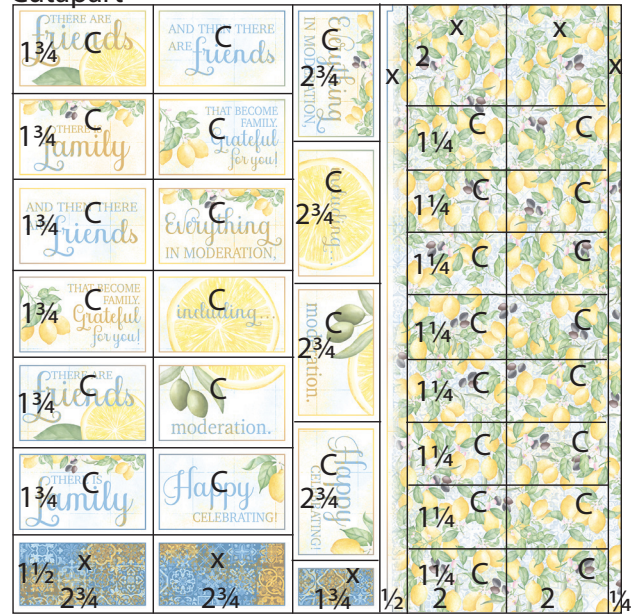
- Cut one Print at 11.75, 10, 8.25, 6.25 and 3.25". Trim the 3.25x12 at 8 and 4". Cut the 3x12 at 11.25, 10.5, 9.75, 9, 8.25, 7.5, 6.75, 6, 5.25, 4.5, 3.75, 3, 2.25, 1.5 and .75". Trim the 2x12 at 9, 6 and 3". Cut each 1.75x12 at 9.5 and 4.75".



12x12 Print



Cutapart



- Trim one Print at 9 and 5". Cut the 5x12 at 11.25, 7.5 and 3.75". Trim the 4x12 at 11.25, 8.25 and 5". Cut the 4x5 vertically at 3.75". Trim the 3x4 at 2". Cut the 3x12 at 10, 8, 6, 4 and 2".

- Cut one Cutapart at 11.75, 9.75, 7.75, 7.25, 5.5 and 2.75". Trim each 2.75x12 at 10.5, 8.75, 7, 5.25, 3.5 and 1.75". Cut the 1.75x12 at 11, 8.25, 5.5 and 2.75". Trim each 2x12 at 10.75, 9.5, 8.25, 7, 5.75, 4.5, 3.25 and 2".

Cutapart



- Trim one Cutapart at 10.25, 8.5, 6.25 and 4". Cut the 4x12 at 11, 8.25, 5.5 and 2.75". Trim one 2.25x12 at 9, 6 and 3". Cut one 2.25x12 at 9, 6.75, 4.5 and 2.25". Trim each 1.75x12 at 9.5 and 4.75".



Set A: 4¼x5½" Cards

**Assembly steps:** Add washi tape to the 1x3.75" and .75x5.5" strips. Nest the 4x5.25 and 3.75x5" panels onto the center of the folded card base. Adhere the 1x3.75" strip onto the panel, as shown, and add the cutapart sentiment. Embellish with ribbon. Adhere the .75x5.5" strip to the inside of the card and finish with the inner sentiment.



Inside: "Hope things are better soon."



Inside: "Just only until about 9pm or so."



Inside: "Hope things are better soon."



Inside: "Just only until about 9pm or so."



**Set B: 4 1/2 x 6 1/4" Cards**

**Assembly steps:** Fold along the score line of the 2x6" strip to create a 1" tab. Hook the tab behind the center of the short side of a 4.25x6" panel and adhere. Nest the panel onto the inside of the card base with the 2x5" flap on the right, and the card flap on the left. Nest a 3.5x4.25 and 3.25x4" panel onto the left flap of the card and a 1.75x4.75" panel onto the right flap. Adhere the outer sentiment onto a square tag. Punch a hole into the top of the tag according to the guide, and top with ribbon. Adhere to the edge of the right card flap. Add the sentiment to the inside of the card. **NOTE:** I added the sentiment to the inside of the flap on the samples below, but I recommend adding to the inside panel so it doesn't get missed.



Inside: "You're the best!"



Inside: "But I'm sending one anyway."



Inside: "Happy birthday!"



Inside: I hope you felt the squeeze!"



**Set C: 5x7" Never-ending Cards**

**Assembly steps for cards above:**

For best results, follow along with the [instructional video](#) starting at 46:05.

Trim each 5x7 with score lines 1.25" from the edge horizontally at 3.5". (Cut through the score lines.) Trim each 5x7 with score lines 1.75" from the edge vertically at 2.5". (Cut through the score lines.) Keep the trimmed pieces together in pairs matched by color. Place two 2.5x7" pieces side by side with score lines running vertically. Place two 3.5x5 score pieces on top, side by side, with the score lines running horizontally. Glue the four pieces together at each corner to create the never-ending card. (Glue should not be applied beyond any score line.) Add four .75x3" panels and two 2x3" panels and the first sentiment to Side 1, as shown. Open the card from the center, and apply two 2x3" panels and one sentiment to the second side. Open again from the center, and add the sentiment and panels to Side 3. Open to Side 4, and add two 2x3" panels, four 1.25x2" panels and the sentiment.



Side 1: "Everything in moderation,"  
Side 2: "including ..."  
Side 3: "moderation."  
Side 4: "Happy celebrating!"



Side 1: "Everything in moderation,"  
Side 2: "including ..."  
Side 3: "moderation."  
Side 4: "Happy celebrating!"



Side 1: "There are friends"  
Side 2: "There is family"  
Side 3: "And then there are friends"  
Side 4: "That become family. Grateful for you!"



Side 1: "There are friends"  
Side 2: "There is family"  
Side 3: "And then there are friends"  
Side 4: "That become family. Grateful for you!"

