

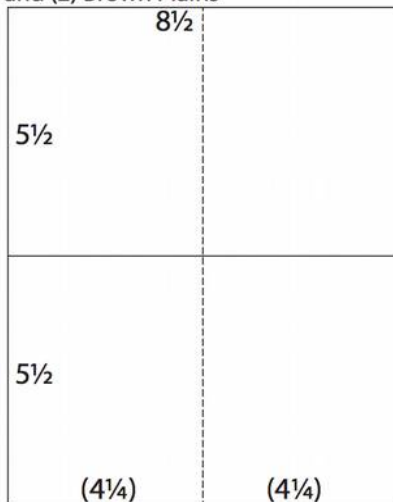


# Assembly Line Cardmaking

## July 2017 Vintage Botany

Trimming and scoring instructions for the *Vintage Botany* Club Stamp paper collection:  
(Makes 10 cards and one card box with lid.)

8½x11 Yellow Plain, Dk. Green Plain,  
and (2) Brown Plains



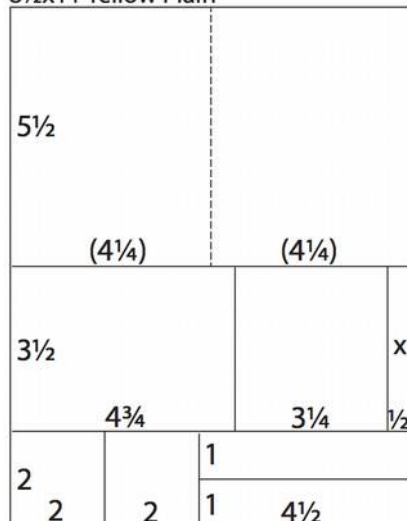
**1. Score** one 8.5x11 Yellow Plain, one Dk. Green Plain, and two Brown Plains vertically at 4.25". Trim horizontally at 5.5". Fold each 5.5x8.5 in half along the score line.

(2) 8½x11 Quad Prints



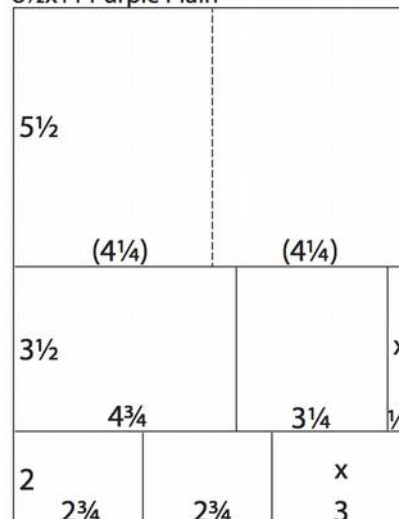
**2. Trim** two 8.5x11 Quad Prints vertically at 4.75 and 4". Cut the 4x11 horizontally at 5.75 and 5.25". Trim the 3.75x11 horizontally at 6 and 5".

8½x11 Yellow Plain



**3. Trim** one 8.5x11 Yellow Plain horizontally at 9 and 5.5". Cut the 3.5x8.5 horizontally at 8 and 4.75". Trim the 2x8.5 horizontally at 4 and 2". Cut the 2x4.5 vertically at 1". **Score** and fold the 5.5x8.5 horizontally at 4.25".

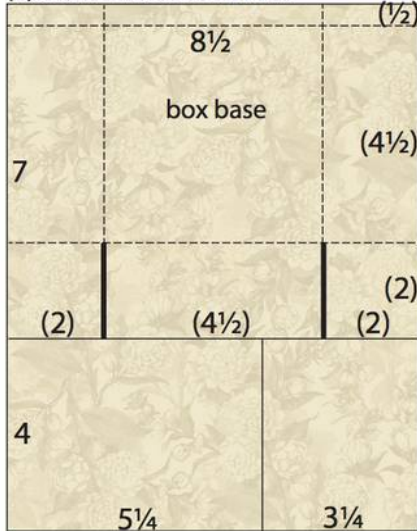
8½x11 Purple Plain



**4. Trim** one 8.5x11 Purple Plain horizontally at 9 and 5.5". Cut the 3.5x8.5 horizontally at 8 and 4.75". Trim the 2x8.5 horizontally at 5.5 and 2.75". **Score** and fold the 5.5x8.5 horizontally at 4.25".

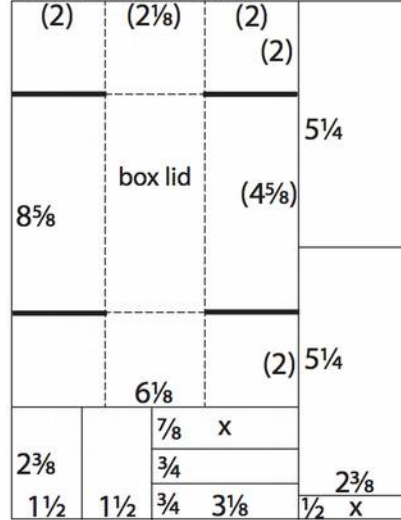


(2) 8½x11 Lt. Green Prints



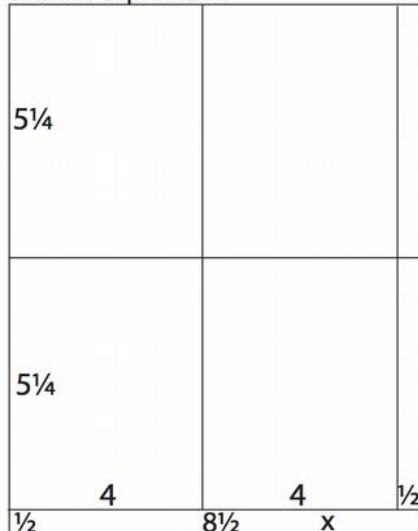
5. Trim each 8.5x11 Lt. Green Print horizontally at 7". Cut the 4x8.5 horizontally at 5.25". **Score** the 7x8.5" horizontally at 2 and 6.5". Score vertically at 2 and 6.5". Cut along the solid lines as indicated in the diagram; remove the 2x2" corners from one box base. Fold and glue the 1/2" flaps, nest and adhere the side walls, and glue to tabs and flaps to form the base.

8½x11 Dk. Green Plain



6. Trim one 8.5x11 Dk. Green Plain vertically at 6-1/8". Cut the 6-1/8x11 horizontally at 8-5/8". Trim the 2-3/8x6-1/8 horizontally at 3 and 1.5". Cut the 2-3/8x3-1/8 vertically at 1.5 and .75". Trim the 2-3/8x11 horizontally at 10.5 and 5.25". Score 2" from each outside edge of the 6-1/8x8-5/8 box lid; cut along solid lines as shown in the diagram and glue tabs to form the lid.

8½x11 Purple Plain



7. Trim one 8.5x11 Purple Plain horizontally at 10.5 and 5.25". Cut each 5.25x8.5 horizontally at 8 and 4".



clubs Scrap.com

Vintage Botany Club Stamp  
July 2017

Click [HERE](#) for more detailed assembly information, or visit [clubs Scrap.com/0717alcm](http://clubs Scrap.com/0717alcm)

