



Wild Flowers



Bead Bound Book

by Kay Williamson of Club Scrap®

This splendid book structure earned plenty of ooh's and aah's around the Clubhouse when Kay made a tour with her sample. You'll be surprised at how quickly and easily the project comes together when you use your well-honed bookbinding skills. We love how the bead spacers allow for those trendy dimensional embellishments such as rosettes, felt flowers, beads, charms, etc.

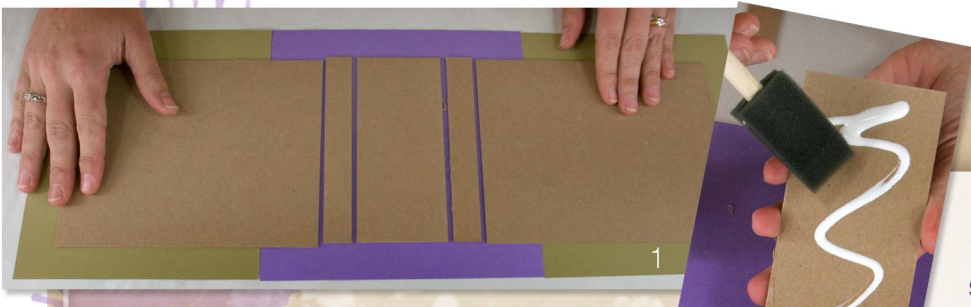
Project Kit:

- 7-3/4x7-3/4" Purple Spine Cover
- (2) 6-3/4x7-3/4" Dark Green Outside Covers
- (2) 9-3/8x5-1/2" Light Green Inside Covers
- (8) 6-3/4 x 11" Purple Page Sleeves
- (8) 5-1/2x5" Light Green Page Mattes
- (3) 5x7" Peach Page Inserts
- (2) 7-1/4x5-3/4" Matte Board Covers
- (2) 3/4x5-3/4" Matte Board Hinges
- 2-1/2x5-3/4 Matte Board Spine
- (18) 6x9mm Crystal Pony Beads
- 1-1/8" Purple Button Closure
- (1) Yard Lilac Waxed Linen Thread
- (1) Yard 7/8" Chiffon Ribbon

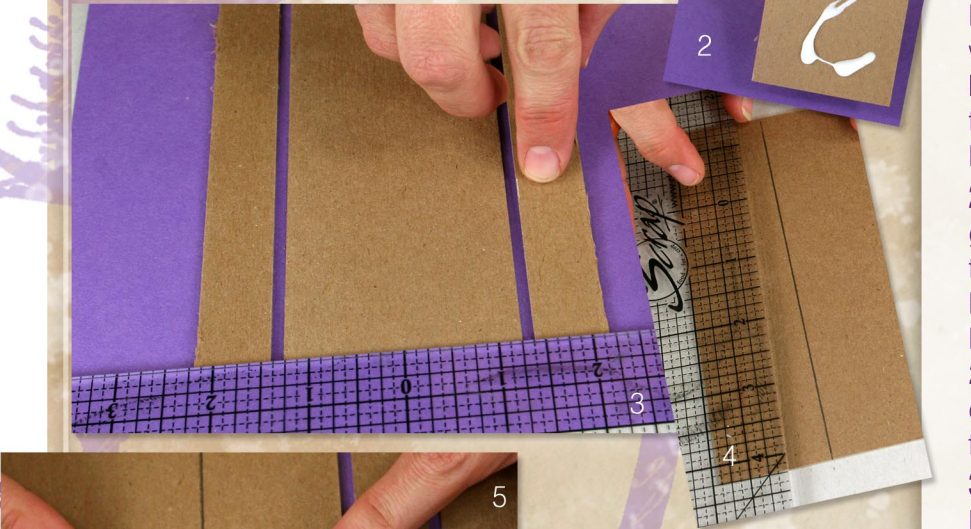
Tools and Materials:

- CS® Bookbinding Glue
- CS® Grid Ruler
- Foam Brush
- Paper Piercing Tool and Cork Board
- Bone Folder
- Scissors
- Pencil
- Crop-A-Dile or Japanese Screw Punch
- Scoring Tool (Optional)
- (2) Bookbinding Needles (Optional)

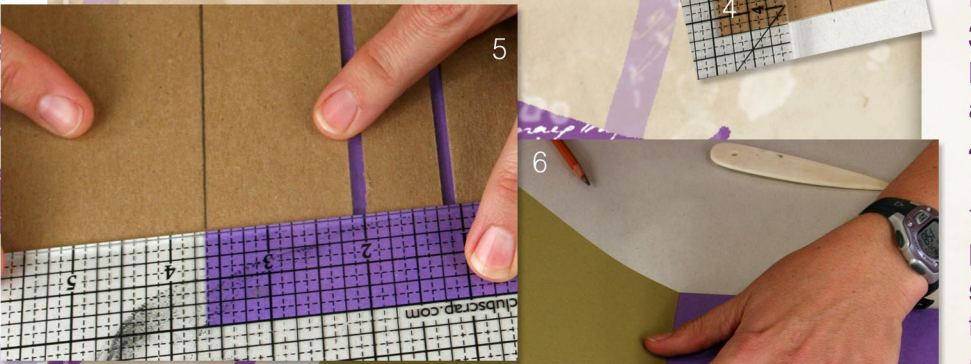




1. Arrange the outside covers, spine cover, and all of the matte board pieces horizontally on your work surface as shown. (This is known as the “test drive” and ensures that all pieces are arranged correctly before attaching with glue.)



2. Position the zero center of the grid ruler 1” from the bottom edge of the 7-3/4x7-3/4” Purple Spine Cover. Brush a thin layer of CS® Bookbinding Glue onto the 2-1/2x5-3/4” Matte Board Spine and center vertically onto the spine cover, flush with the edge of the ruler.



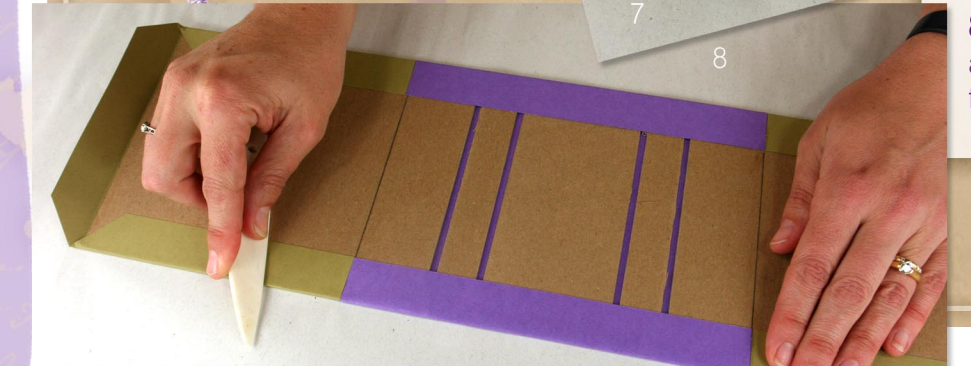
3. Glue the 3/4x5-3/4” Matte Board Hinges on each side of the spine with a 1/8” gutter between each piece.



4. Measure and mark a guideline 1-1/2” from one short edge of the 7-1/4x5-3/4” Matte Board Covers. Draw the same guideline on the other side so that the line “wraps around” the entire cover.



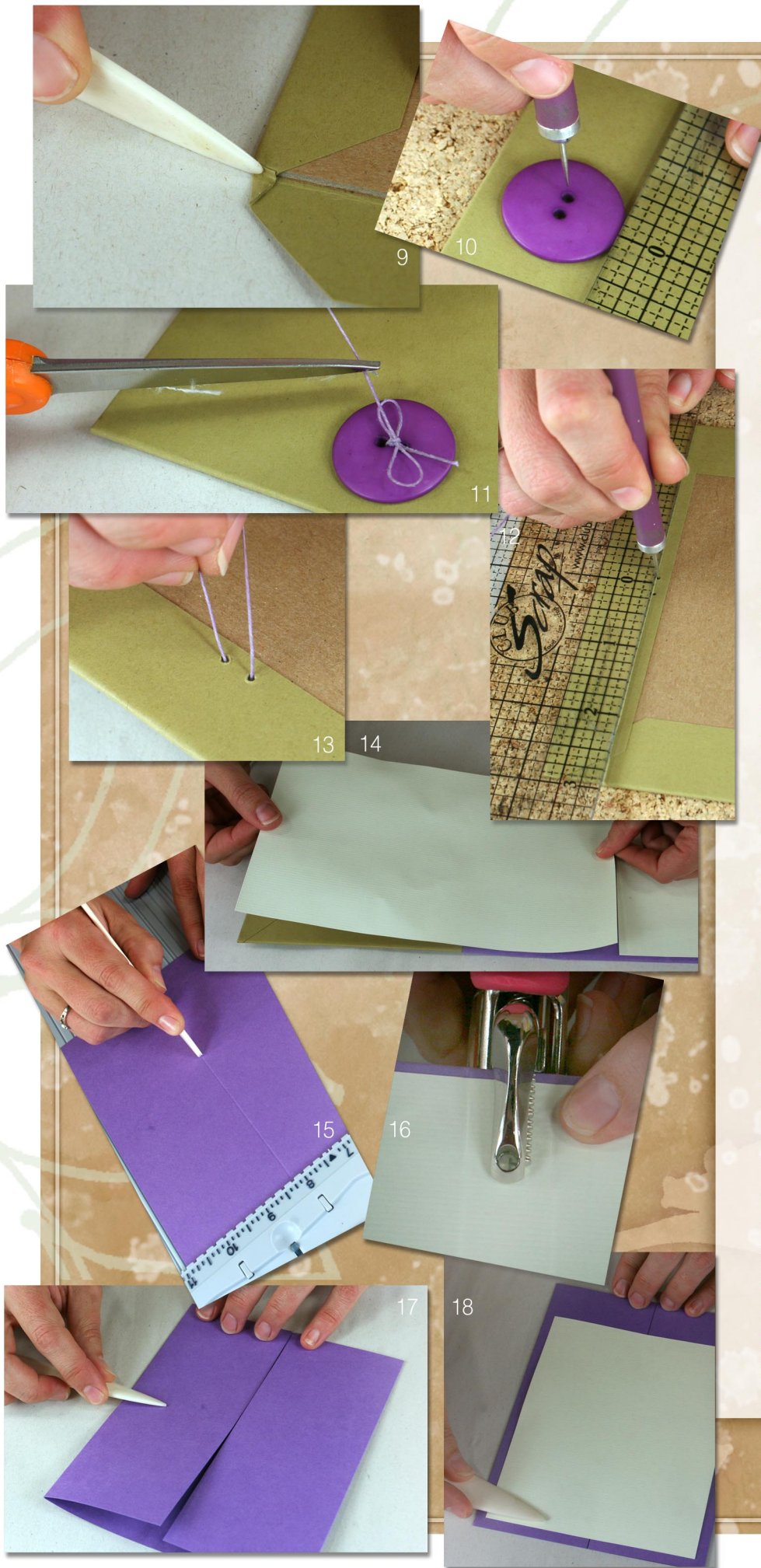
5. Brush glue within the marked area and attach to the spine cover, aligning the guideline with the edge of the paper. Flip the cover over and burnish the paper to ensure good contact between the paper and matte board. Repeat for the other cover.



6. Add glue to the remaining exposed matte boards and attach the 6-3/4x7-3/4” Dark Green Outside Covers. Burnish with a bone folder.

7. Use a scissors to trim each corner at a 45 degree angle, leaving approximately 1/8” of paper beyond the tip of each matte board corner.

8. Pre-wrap all of the paper flaps around the matte boards with a bone folder. Glue the long flaps into place.



9. Tuck in the excess paper flaps at each corner and glue the short flaps. Burnish.

10. Choose which side will be the front of your cover. Center the large purple button onto the edge of the front cover. Pierce through the button holes and cover with a paper piercing tool and cork board.

11. Thread waxed linen through the button and cover with thread tails exiting at the front. Tie the tails into a bow and trim ends.

12. Measure $\frac{3}{4}$ " from the edge of the back cover and find the center. Pierce a hole $\frac{1}{8}$ " from each side of center.

13. Bring the waxed linen thread through the holes from inside to outside and even out the thread tails.

14. Brush glue onto the $9\text{-}\frac{3}{8} \times 5\text{-}\frac{1}{2}$ " Light Green Inside Covers and attach to the inside of the wrapped matte board. There should be an $\frac{1}{8}$ " reveal around the outside edges of the covers. Burnish with a bone folder.

15. Center $\frac{1}{4}$ " holes 1" from the top and bottom edge of the narrow matte board hinges.

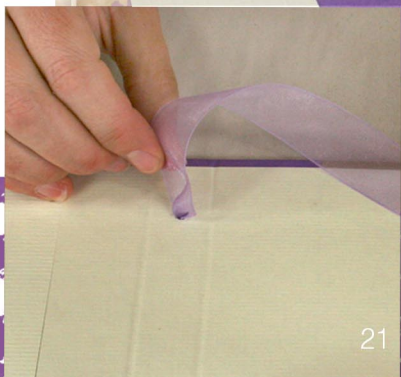
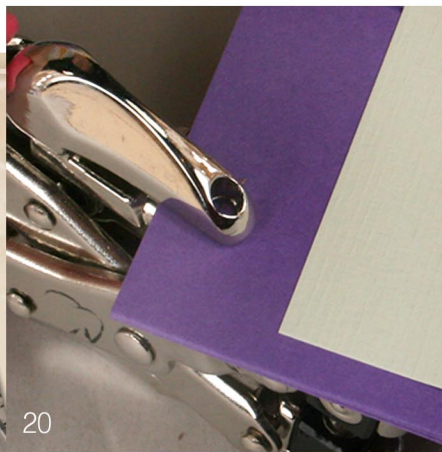
16. Score each $6\text{-}\frac{3}{4} \times 11$ " Purple Page Sleeve horizontally at 2.75 and 8.25".

17. Fold along the scorelines of each page sleeve to create two flaps; burnish.

18. Apply a small amount of glue to the short edges of a $5\text{-}\frac{1}{2} \times 5$ " Light Green Page Matte and place onto the folded Purple page sleeve, keeping an equal margin on three sides. One edge will have a larger margin to accommodate the binding. Repeat for the remaining sleeves and mattes.



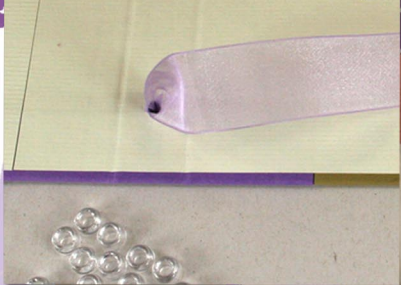
19 20



21



22



23



24

19. Measure 3/8" from the binding edge of one page sleeve. Mark 7/8" from the top and bottom edge.

20. Stack three additional sleeves beneath the marked page and punch holes at the marked locations. Keeping the original pattern page on top, repeat punching for the remaining sleeves.

21. If available, thread a book-binding needle onto each end of the chiffon ribbon. Thread the ribbon ends through the back cover of the book, from the outside to the inside.

22. Thread a pony bead onto each ribbon, and then add a page sleeve.

23. Continue adding a pony bead followed by a page sleeve until all pages have been installed.

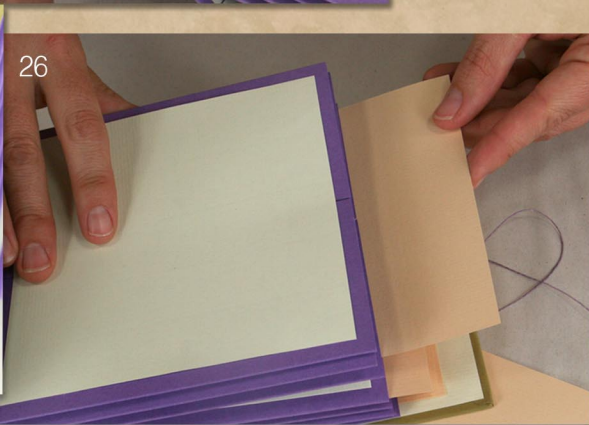
24. Thread one more pony bead onto each ribbon and bring ribbon to the outside of the front cover.

25. Tie the ribbon tails into a bow and trim ends. **TIP:** Fold the ribbon in half lengthwise, and cut at an angle.

26. Add the 5x7" Peach Page Inserts to each page sleeve. To close the book, wrap the waxed linen thread tails around the button on the front cover. Trim thread tails to the desired length, allowing for expansion of the book.



25



26