

CLUB

Stamp

Bookshelves

Card Keeper Project

by Kay Williamson of Club Scrap®

We've got a clever way for you to collect and store your favorite handmade cards right on your bookshelf. Simply slide the fold of the card beneath an elastic tie and page through them when the mood strikes. Front and back inside pockets can be used to store lists, envelopes and postage.



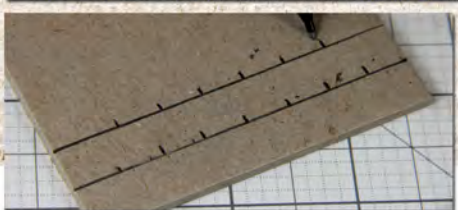
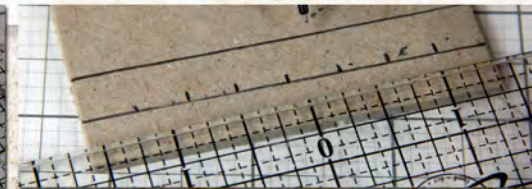
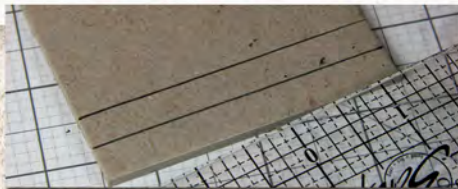
Project Kit:

- (2) 5.5x8" Book Board Covers
- 3x8" Book Board Spine
- 6.5x10" Outside Spine Wrap
- (2) 5x10" Outside Cover Wraps
- 6.5x7.75" Inside Spine Wrap
- (2) 5.25x7.75" Inside Covers
- (2) 3.5x7.25" Inside Pockets
- (2) .5x10" Binding Strips
- (26) Gold Eyelets
- (7) Gold Elastic Ties

Tools and Materials:

- CS® Bookbinding Glue
- CS® Grid Ruler
- Scoring Tool
- Bone Folder
- Foam Brush
- Scissors
- Paper Piercing Tool and Cork Board
- Crop-A-Dile®
- Japanese Screw Punch (Optional)
- Pencil
- Tape

1. **Use** a grid ruler and pencil to mark lines $\frac{3}{8}$ " and $\frac{3}{4}$ " from the top and bottom edges of the 3x8" book board spine.
2. **Make** a mark every $\frac{3}{8}$ " across the bottom line. There should be seven equally spaced marks.
3. **On the second** line, make marks between the seven spots. Repeat for the other end of the spine.
4. **Punch** a hole into each marked spot with the largest punch on the Crop-A-Dile®.



5. Place the 6.5x10" Outside Spine Rap vertically on your work surface. Position the grid ruler at the center and 1" from the bottom edge. Rest the book board spine onto the spine wrap at the center. Tip: Once perfectly centered, mark the location of the spine onto the paper with a pencil.

6. Glue the spine onto the wrap with CS Bookbinding Glue.

7. Draw a vertical line 1.5" from the long edge of each book board cover.

8. Brush glue within the marked area on one board.

9. Place the glued area onto the spine wrap, leaving 1/4" between the spine and cover. Confirm that the spine and cover are level.

10. Repeat for the other cover. Burnish the paper onto the boards with a bone folder.

11. Brush glue onto the outside of the book board cover.

12. Attach one 5x10" Outside Cover Wrap and burnish. Tip: Stamp the paper prior to attaching to the board. If stamped, ensure that both covers face the same direction. Repeat to attach the other cover.

13. Pierce through the cover at each punched hole in the spine.

14. Working from the outside of the cover, use the tip of pencil to push the paper into the hole.

Alternatively, remove the paper from the hole completely with a Japanese screw punch.

15. Trim paper from the four outside corners of the cover at a 45 degree angle, being sure to leave at least 1/8" of paper extending beyond the tip of each corner.

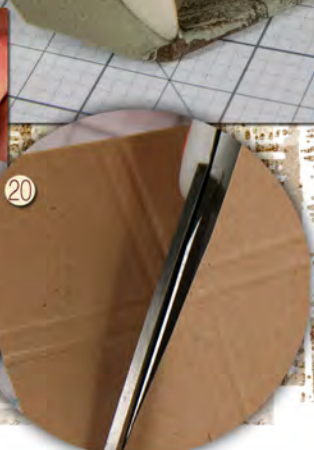
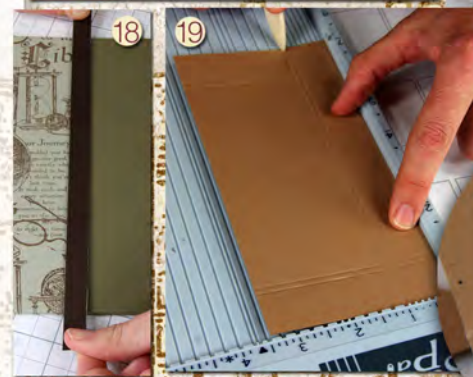
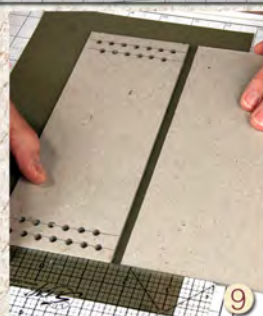
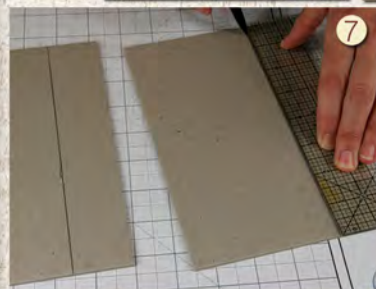
16. Using a bone folder, pre-fold the paper flaps around the book boards. Glue the long flaps into place first.

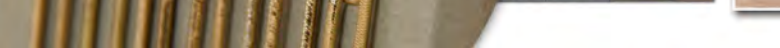
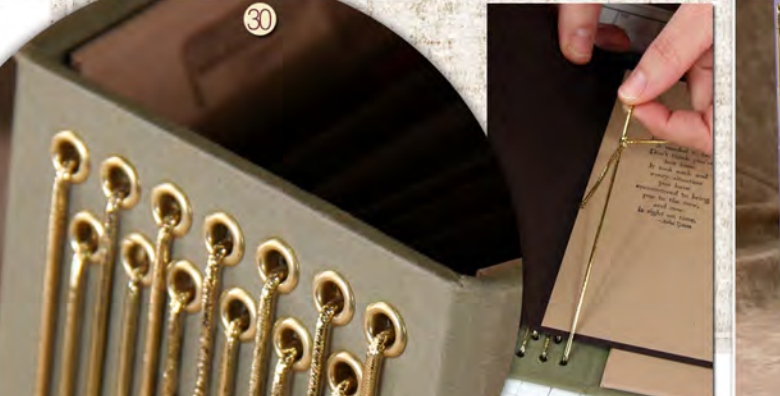
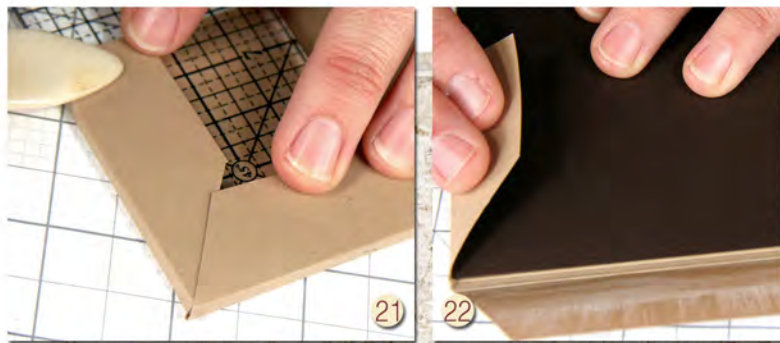
17. Tuck in the paper that extends beyond the tip of each corner with the tip of a bone folder, and glue short flaps into place.

18. Place a .5x10" Binding Strip on a protected work surface and brush with glue. Attach to the cover along the seam between the spine and cover wraps. Repeat for the other side.

19. Score the 3.5x7.25" Inside Pockets 7/8 and 1" from each short edge and one long edge.

20. Trim away the scored corners of the pockets at a 45 degree angle. Cut through the square formed by the intersecting scorelines.





21. Fold along the scorelines. It will be helpful to rest the grid ruler against the innermost scoreline and wrap the flaps around the ruler to form the pocket, which is the same thickness of the ruler.

22. Brush glue onto the inside of each pocket flap. Place one 5.25x7.75" Inside Cover onto the pocket, resting it along the inner score lines. Fold the flaps into place. Repeat for the second pocket.

23. Burnish the flaps to the inside covers by tucking the grid ruler into the pocket to help maintain its shape.

24. Glue the 6.5x7.75" Inside Spine Wrap to the spine.

25. Pierce through the wrap at each punched hole in the spine and push the paper into the holes, or remove paper with a screw punch.

26. Place an eyelet into each hole on the outside of the spine. Use the flat edge of a bone folder to assist with eyelet placement.

27. Give each eyelet a little squeeze with the Crop-A-Dile. It will not fully set into the book board, but it will be more secure.

28. Glue the inside covers/pocket pages into the inside of the book. Before making final placement, confirm the orientation of the inside and outside covers is correct.

29. Untie each piece of elastic cord and trim in half. Thread the cord through the bottom and corresponding top hole. Tie the cord ends together in a double knot. The knot can be positioned on the inside or outside of the spine, depending on your preference. Continue threading and tying the cords, alternating between the outer eyelet pairs and inner eyelet pairs.

30. To use, slip a folded card beneath the elastic on the inside of the book. The longer cords will hold 5x7" cards, and the shorter lengths will house 4.25x5.5" cards.

