



February 2024 Club Scrap® Card Kit

Take Flight

Please scan the QR code at right with a phone or tablet camera or click on or enter the following link to view a helpful card assembly tutorial:

<https://youtu.be/fAKQ9uutm5c>



Materials and Tools:

- Take Flight CS® Card Kit
 - 12" Paper Trimmer
 - Accordion Pocket File
 - ScorPal
 - Adhesive
 - Tape
- Foam Adhesive Tape
 - 3x14" CS® Grid Ruler
 - Scissors
 - CS® Bookbinding Glue
 - Needle-tipped Glue Applicator
 - Staples and Stapler

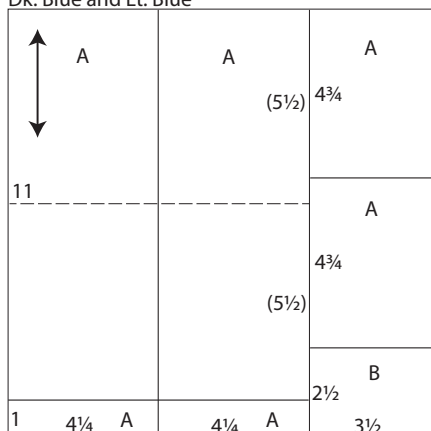
Measurement Conversions: .25 = 1/4"
 .5 = 1/2"
 .75 = 3/4"

Preparation:

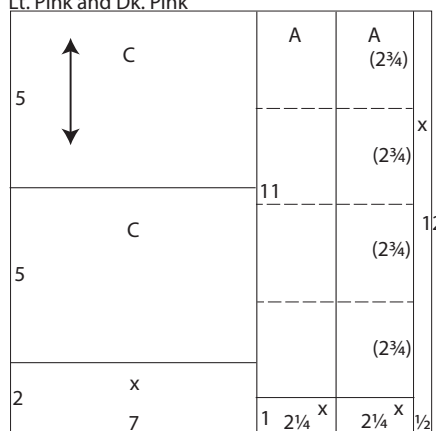
Trim the papers and cutparts into sections as indicated by the detailed instructions. While trimming, distribute the pieces to a pile or file designated for each card set as referenced in the diagram.

If there is an arrow on the paper trimming diagram, make sure the paper grain dips easily in the same direction as the arrow when placing the paper into the trimmer.

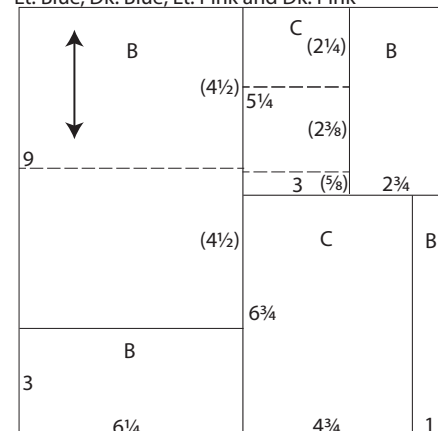
Dk. Blue and Lt. Blue



Lt. Pink and Dk. Pink



Lt. Blue, Dk. Blue, Lt. Pink and Dk. Pink



1. Trim one Dk. Blue and one Lt. Blue at 8.5 and 4.25".
 Rotate and cut each 4.25x12 at 11".
 Trim the 3.5x12 at 9.5 and 4.75".
 Score each 4.25x11 horizontally at 5.5".
2. Cut one Lt. Pink and one Dk. Pink at 11.5, 9.25 and 7".
 Rotate and trim the 7x12 at 10 and 5".
 Cut each 2.25x12 at 11".
 Score each 2.25x11 horizontally at 2.75 and 8.25". Flip the paper bottom to top and score at 5.5".
3. Trim one Lt. Blue, Dk. Blue, Lt. Pink and Dk. Pink at 6.25".
 Rotate and cut the 6.25x12 at 9".
 Cut the 5.75x12 at 5.25".
 Rotate the 5.25x5.75 and trim horizontally at 3".
 Cut the 5.75x6.75 vertically at 4.75".
 Score each 6.25x9 horizontally at 4.5".
 Score each 3x5.25 horizontally at 2.25 and 4.625 (4 5/8)".



Set A: 4¼x5½" Explosion Cards

Assembly steps: Adhere the outer 2.75" square sentiment to the upper center of the 3.25x4.5" Print. Add a criss-cross of ribbon to the bottom portion of the Print and nest onto the 3.5x4.75" panel. Center onto the card and add the pink chiffon flower to the center of the ribbon.

To create the explosion mechanism, please consult the video workshop at **26:45** for assembly steps, tips and tricks.

For review, place the 3x7" strip horizontally on your work surface with the bump of the score facing down. Rest a CS® Grid ruler 2" from the left edge. Bring the top right corner of the paper down along the edge of the ruler to form a 45° fold. Unfold, and bring the bottom right corner up along the edge of the ruler to form a second 45° angle. This creates an "x" shape.

Flip the paper over and fold along the center score line. Unfold, and place the paper on your work surface with the peak of the fold facing up, like a tent. Press down on the center of the fold, causing the sides to pop up.

Bring the ends of the center crease together to form a "house" shape. Center the newly formed mechanism onto the inside of the 4.25x11" folded card base with the tip of the mechanism near the center of the fold of the card.

Accordion fold the 2.25x11" strip and identify the edge with two mountain folds. With the mountain folds facing the top, slide the strip between the two mechanism flaps with the left flap on the top of the accordion. Align the bottom edge of the accordion with the bottom edge of the card.

Mark where the flap overlaps the accordion and apply glue within the marked area to hold the flap in place. Apply glue to the triangular area of the mechanism, close the card, and burnish. Flip the card and repeat steps to glue the flap and the triangular area.

Add the sentiments to the sections of the pop-up after confirming the location of the front side of the card. Finish with the 1x4.25" strip and cutout image.



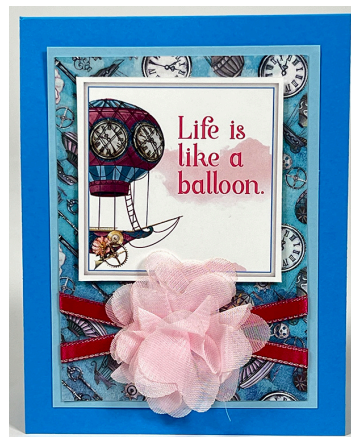
Inside: "Here's to a year filled with joy, laughter, and breathtaking views."



Inside: "Here's to a year filled with joy, laughter, and breathtaking views."



Inside: Another year of sharing life's ups and downs together!



Inside: "If you never let yourself go, you'll never know how much you can rise. Up, up and away!"



Set B: 4½x6¼" Cards

Assembly steps: Nest the 2.75x6" Print onto the 3x6.25" panel and adhere about 1/4" from the left edge of the folded card base. Nest the 2.5x5" Cutapart onto the 2.75x5.25" panel and center onto the card. Trim the laser cut wing in half at the center and add to the Cutapart. Select your favorite .5x1.75" outer sentiment, trim each word with scissors or a craft knife, and adhere next to the wing. Trim a "v" into one short edge of the 1x6.75 strip and add to the inside of the card. Add the printed or plain panels to the inside of the card and finish with the sentiment and remaining half of the laser cut wing.



Inside: "The sky's the limit!"



Inside: "Thinking of you"



Inside: "Wishing you happiness"



Inside: "So happy for you"



Set C: 5x7" Cards

Assembly steps: Nest a cutpart onto the upper center of the 3.25x4.5" Print and add ribbon to the lower portion of the panel. Adhere to the left edge of the 4.75x6.75" panel, centered top to bottom. Fold along the score lines of the 3x5.25" panel. Apply adhesive to the small tab and hang over the top edge of the 4.75x6.75" panel, centered within the remaining open space. Apply adhesive to the scored area at the bottom of the 3x5.25" piece, layer with the 2.75x4.25" Print, and center the cutpart sentiment onto the panel. To create a stopper for the tent, glue the gear charm to the inside of the 4.75x6.75" panel, as shown. Add the instructions for the tent card to the inside of the flap, and center the panel onto the 5x7" card base.



Inside: "Tuck the bottom edge of the flap against the charm to create a tent."



Inside: "Tuck the bottom edge of the flap against the charm to create a tent."



Inside of each card: "Tuck the bottom edge of the flap against the charm to create a tent."

