

CLUB Stamp

Up, Up and AWAY!

Art on a String Project

by Tricia Morris of Club Scrap®

When Kay came to the design team with her first prototype of this extraordinary project, we were wild about it! Don't freak out when you see all of the steps... just take 'em one at a time and you'll be fine. Pour yourself a beverage and enjoy the process. We sure did!



Project Kit:

Book Board

- 2x4" Box Base
- (2) 4.25x6" Box Front and Back Walls
- (2) 2x6" Box Side Walls
- 2.5x4.5" Lid
- (2) .75x4.75" Lid Front and Back Walls
- (2) .75x2.5" Lid Side Walls

Paper

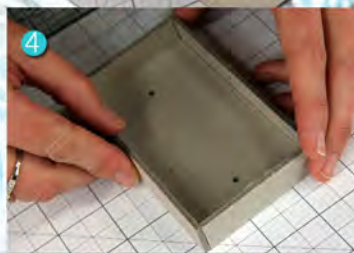
- 8.5x11" White Print Box Wrap
- 5.5x11" White Print Box Wrap
- 8.75x6.75" White Print Lid Wrap
- (2) 4.25x2.25" White Print Inside Lid Wraps
- 5.5x8.5" White Balloon Cutout

Other

- (4) Wooden Feet
- Black Thread
- 10" Black Ribbon
- (2) D-Rings
- (2) Brads

Tools and Materials:

- (2) Foam Brushes (gluing and painting)
- CS® Bookbinding Glue
- CS® Grid Ruler
- Scissors
- Crop-A-Dile®
- Pencil
- Black Acrylic Paint
- Chalk and Chalk Applicator
- Bone Folder
- Tape

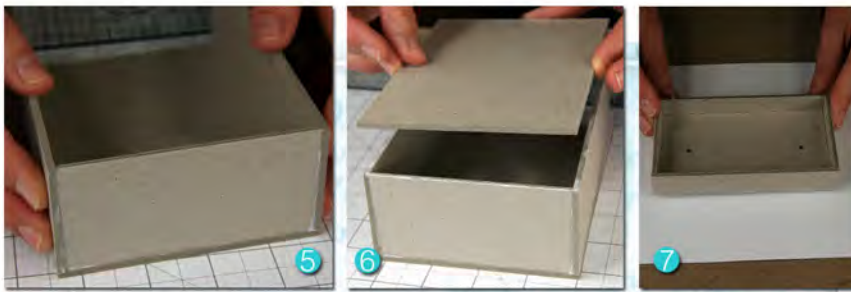


1. Measure and label all of the book board pieces according to the supply list above. Position the 2.5x4.5" Lid horizontally on your work surface. Place the ruler 1.25" from the bottom edge. Mark .75" from the left and right edges.

2. Punch a 1/8" hole at each marked spot with a Crop-A-Dile®.

3. Arrange the lid and the front, back and side walls on your work surface and take them for an assembly test drive. Study how the pieces fit together to form the lid. Brush glue onto the outside edges of the lid and attach the side walls.

4. Apply glue to all corner joints before attaching. Once all side walls are in position, set the lid aside to dry.



5. Arrange the box pieces on your work surface with the back wall in the center and test drive the assembly. Brush glue onto the edges of the side walls and base and place on top of the back wall, flush with the edges.

6. Add glue to the exposed edges of the side walls and base; attach the front wall.

7. Place the 8.75x6.75" White Print Lid Wrap horizontally on your work surface. Brush glue onto the top of the lid and center onto the wrap. Burnish the paper onto the lid with a bone folder.

8. Rest a ruler along the long edges of the lid and draw horizontal lines to the left and right edges of the wrap.

9. Lay the ruler 1/2" past a corner of the long wall of the lid and mark a vertical guideline. Repeat for all four corners.

10. Cut along all pencil lines and remove the four outside corners of the wrap.

11. Brush glue onto the short flaps and wrap around the short walls of the lid. Burnish the paper onto the board with a bone folder.

12. Apply glue to a long walls of the lid and attach the long flaps.

13. Bring the long flaps around the corner and tack in place. Crease each corner at a 90 degree angle.

14. Cut along each folded corner of the wrap to the edge of the lid. Brush glue onto the flaps, one at a time, and secure them to the inside of the lid.

15. Use the tip of a scissors to transfer the location of the punched holes in the lid through the wrap. Attach the D-rings with black brads.

16. Brush glue onto one 4.25x2.25" White Print Inside Lid Wrap and attach to the inside of the lid.

17. Position the 8.5x11" and 5.5x11" White Print Box Wraps vertically on your work surface, plain side up. Measure and mark a guideline 1.5" from the bottom edge of each piece.

18. Measure a vertical guideline 2.25" from the right edge of the 8.5x11" piece.

19. Brush glue onto the front wall of the box. Position the bottom corner of the box at the intersecting point of the two pencil guidelines. Make sure that the edges of the box are lined up with the guides.

20. **Glue** the side walls and burnish the paper flaps into place.

21. **Working** at the base of the box, cut the paper flaps at a 45 degree angle toward each wrapped corner. Glue the flaps onto the base.

22. **Rest** the edge of the ruler along the top edge of the box and use the bone folder to crease the paper flaps at each corner. Cut along the creases.

23. **Glue** the three flaps down into the inside of the box. Burnish.

24. **Brush** glue onto the uncovered wall of the box and center onto the 5.5x8.5" White, lining up the bottom edge of the box with the guideline.

25. **Glue** down the side flaps and burnish.

26. **Cut** the corners of the bottom flaps at an angle and glue into place onto the base of the box.

27. **Square** off the top flaps and cut along the creases.

28. **Glue** the flaps one at a time and wrap them down inside the box.

29. **Use** a scissors to trim three sets of balloons from the printed cutpart.

30. **Color** or alter the balloons with chalks or other mediums.

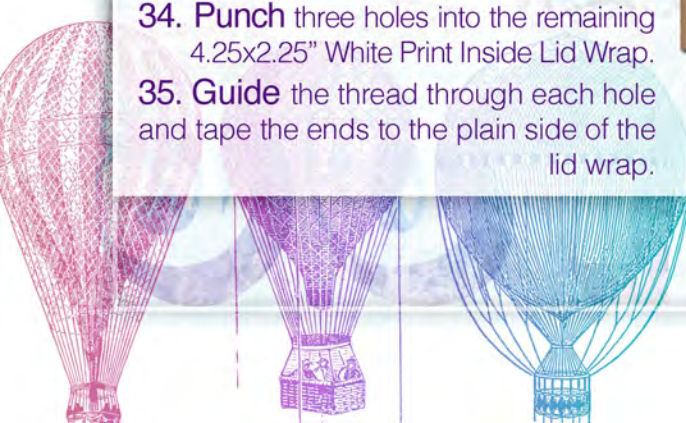
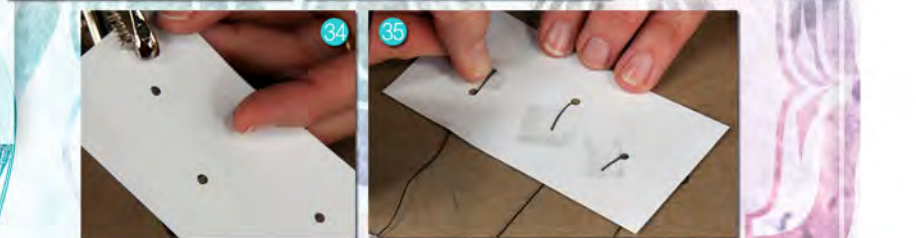
31. **Trim** the black thread into three equal lengths. Brush glue onto the back of one of the balloons. Place the end of the thread onto the balloon so that it hangs off the top edge. Align the coordinating balloon to sandwich the thread between the two layers.

32. **Repeat** for the remaining two balloon shapes.

33. **Arrange** the balloons at varying lengths. Rest the lid of the box on the threads to mark the position and trim.

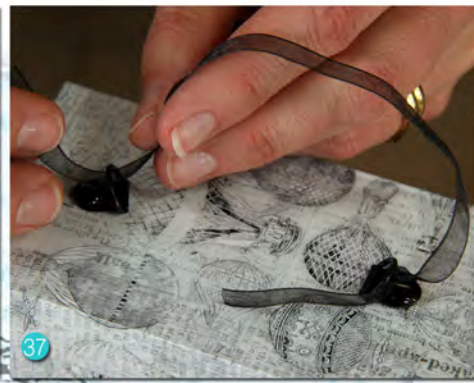
34. **Punch** three holes into the remaining 4.25x2.25" White Print Inside Lid Wrap.

35. **Guide** the thread through each hole and tape the ends to the plain side of the lid wrap.





36



37

36. Brush glue onto the lid wrap and adhere to the inside of the lid. Burnish with a bone folder.

37. Tie the black ribbon to the D-rings to create the handle.

38. Paint the four wooden feet black with acrylic paint. *TIP:* Pierce into the bottom of the wooden piece with the tip of a craft knife and use it as a handle while painting.

39. Place a dab of glue into each corner on the bottom of the box and attach the painted feet. Set aside to dry. Decorate the box with stamped panels and additional greetings.



38



39

