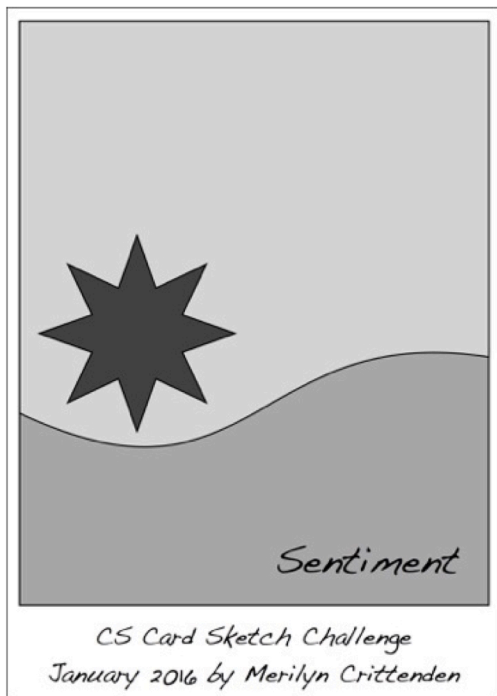
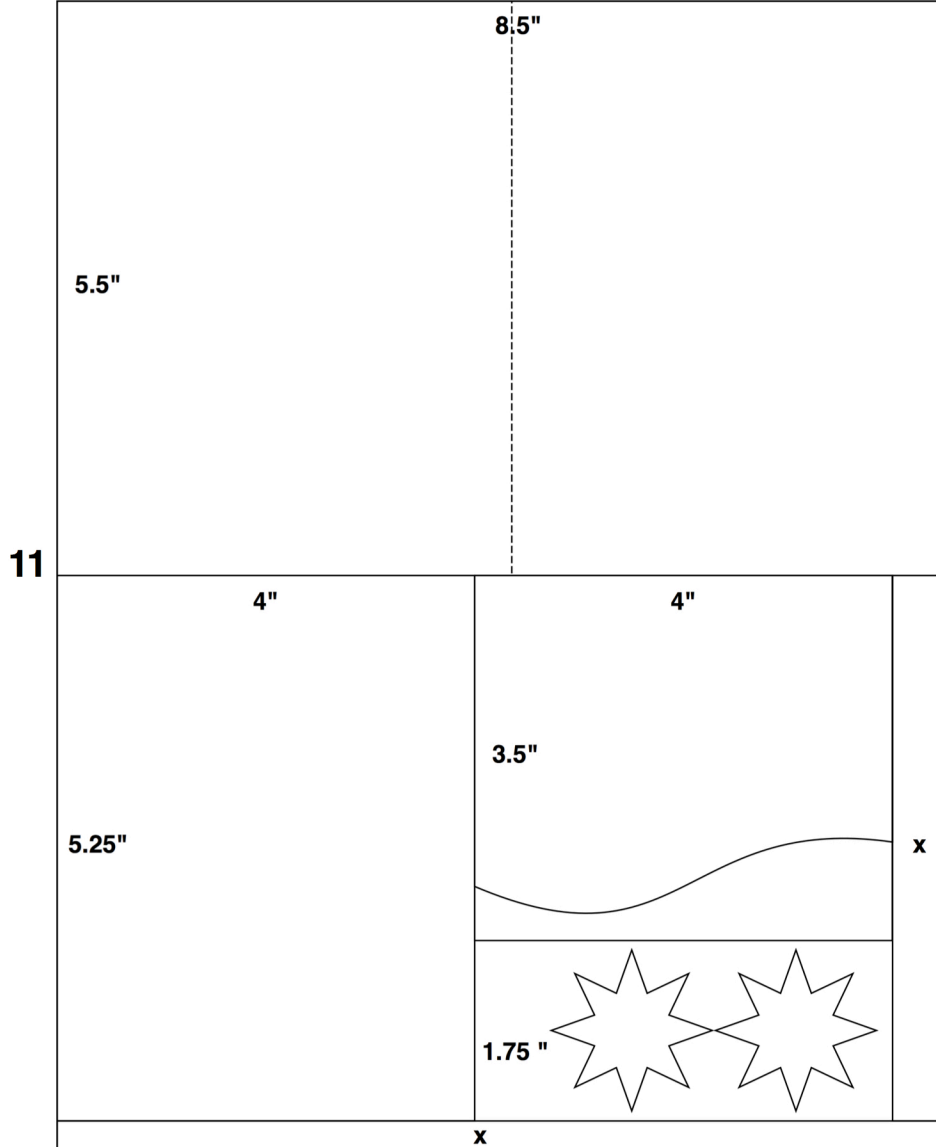


# Jan 2016 Card Sketch



## Gather:

- 12" Paper Trimmer
- Adhesive
- 8.5x11 Paper A
- 8.5x11 Paper B
- 8.5x11 Paper C
- 8.5x11 Paper D



**8.5 x 11" papers A, B, C, & D**

1. Trim 8.5x11 papers horizontally at 10.75 and 5.5".
2. Score one 5.5x8.5 of each paper horizontally at 4.25" creating four card bases.
3. Trim the remaining 5.5x8.5 horizontally at 8 and 4".
4. Cut one 4x5.5 of each paper horizontally at 3.5".
5. Tear or cut the 3.5x4" at an angle as suggested in the diagram.
6. Punch or die cut focal embellishment from the 1.75x4" panel.

