

					
RAL 1000 49/15200	RAL 1019 49/13660 • 38/15019	RAL 2008 49/24340	RAL 3014 49/31080	RAL 4008 49/32280	RAL 5014 49/42320
					
RAL 1001 49/15190 • 38/15001	RAL 1020 49/22500 • 38/20020	RAL 2009 49/24360	RAL 3015 49/33670	RAL 4009 49/34740	RAL 5015 49/42330
					
RAL 1002 49/22590 • 38/20002	RAL 1021 49/22280	RAL 2010 49/24520	RAL 3016 49/31980	RAL 4010 49/40490	RAL 5017 49/40760 • 38/40017
					
RAL 1003 49/22580	RAL 1023 49/22490 • 38/20023	RAL 2011 49/24580	RAL 3017 49/31060	RAL 5000 49/42200	RAL 5018 49/41140 • 38/40020
					
RAL 1004 49/22570	RAL 1024 49/22480 • 38/20024	RAL 2012 49/24690	RAL 3018 49/31050	RAL 5001 49/42210	RAL 5019 49/42360 • 38/40019
					
RAL 1005 49/22560	RAL 1027 49/22470	RAL 3000 49/33120	RAL 3020 49/31040	RAL 5002 49/42220	RAL 5020 49/44270 • 38/40018
					
RAL 1006 49/22550	RAL 1028 49/22460	RAL 3001 49/31120	RAL 3022 49/33700	RAL 5003 49/42230	RAL 5021 49/41190 • 38/40021
					
RAL 1007 49/22540	RAL 1032 49/22450	RAL 3002 49/31110	RAL 3027 49/33660	RAL 5004 49/42240 • 38/40004	RAL 5022 49/42390
					
RAL 1011 49/15180	RAL 1033 49/22240	RAL 3003 49/31100	RAL 3031 49/34730	RAL 5005 49/43190	RAL 5023 49/44650
					
RAL 1012 49/22530	RAL 1034 49/23910	RAL 3004 49/33900	RAL 4001 49/43160	RAL 5007 49/42250 • 38/40007	RAL 5024 49/44660
					
RAL 1013 49/11280 • 38/10013	RAL 1037 49/20096	RAL 3005 49/31900	RAL 4002 49/31030	RAL 5008 49/42260 • 38/40008	RAL 6000 49/53160 • 38/50000
					
RAL 1014 49/15170 • 38/15014	RAL 2000 49/24570	RAL 3007 49/31910	RAL 4003 49/32270	RAL 5009 49/42270	RAL 6001 49/52900 • 38/50005
					
RAL 1015 49/15320 • 38/15015	RAL 2001 49/24560	RAL 3009 49/31920	RAL 4004 49/31020	RAL 5010 49/42280	RAL 6002 49/52890
					
RAL 1016 49/22520 • 38/20016	RAL 2002 49/24550	RAL 3011 49/31090	RAL 4005 49/42780	RAL 5011 49/43180 • 38/40011	RAL 6003 49/52880 • 38/50003
					
RAL 1017 49/22510	RAL 2003 49/24540	RAL 3012 49/31940 • 38/30012	RAL 4006 49/32090	RAL 5012 49/43170	RAL 6004 49/50980 • 38/50004
					
RAL 1018 49/21830	RAL 2004 49/24530	RAL 3013 49/31950	RAL 4007 49/32540	RAL 5013 49/42310 • 38/40013	RAL 6005 49/50670 • 38/50002



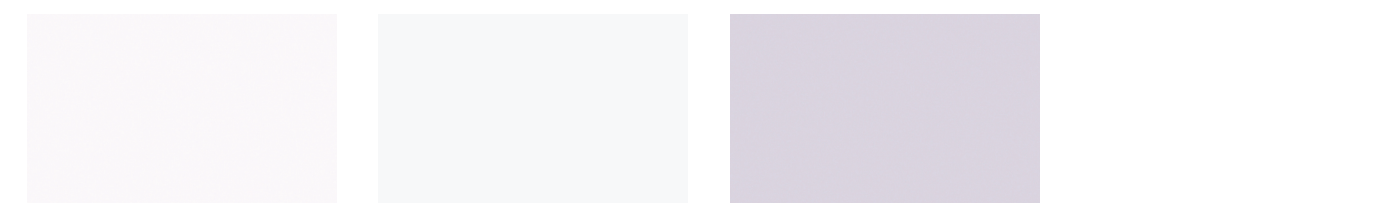
bengal | 49/01234 ❖ Bengal Clear Glossy
bengal | 49/66666 Bengal Yellow | gloss level 9545
bengal | 49/77777 Bengal Light Grey | gloss level 9545
bengal | 49/44444 Bengal Blue | gloss level 9545



bengal | 49/11111 Bengal White | gloss level 9545
bengal | 49/22222 Bengal Orange | gloss level 9545
bengal | 49/70158 Bengal Dark Grey | gloss level 9545
bengal | 49/55555 Bengal Green | gloss level 9545



bengal | 49/10388 Bengal Cream | gloss level 9545
bengal | 49/33333 Bengal Red | gloss level 9045
bengal | 49/99999 *** Bengal Silver
bengal | 49/88888 Bengal Black | gloss level 9545



glossy | 39/10010 Sky White | gloss level 9045
glossy | 39/10160 Horizon White | gloss level 9045
glossy | 39/10200 Appliance White | gloss level 9045
glossy | 39/10210 Apollo White | gloss level 9045



glossy | 44/10008 Anti-Graffiti White | gloss level 9045
glossy | 49/10316 Steel Rack White | gloss level 9045
glossy | 49/10410 High-Reflective White | gloss level 90+
glossy | 49/11421 WW White | gloss level 8545



glossy | 39/60010 Chocolate Brown | gloss level 8045
glossy | 39/80010 Gloss Black | gloss level 8545
glossy | 49/80036 Wet Black | gloss level 9545
glossy | 418/80020 FC Black Mar Resistant | gloss level 55-65 NEW



matte | 49/81210 Alaska Black Matte | gloss level 2545 NEW
semigloss | 49/81231 Alaska Medium Black | gloss level 6045 NEW
glossy | 49/13720 Alaska Bianco | gloss level 80-95 NEW
glossy | 49/80600 Alaska Black Glossy | gloss level 80-95 NEW



flat matte interior | 69/80291 NEW Black | gloss level 343
flat matte | 44/80060 Solar Black Flat Matte | gloss level 643
flat matte | 44/80066 Black Magic Flat Matte | gloss level 643
flat matte | 44/90053 Millennium Black Flat Matte | gloss level 845



matte | 49/10103 White Matte RAL 9010 | gloss level 2045
matte | 49/11350 White Matte | gloss level 2045
matte | 39/80020 Black Matte | gloss level 2045
matte | 39/60060 Roman Bronze Matte | gloss level 2045



matte | 49/80350 Black Matte RAL 9005 | gloss level 2047
matte | 44/90052 Millennium Black Matte | gloss level 20-30
semi matte | 49/81430 Black Semi Matte | gloss level 4045
semi matte | 39/10040 White Semi Matte | gloss level 4045



semigloss | 49/80033 PacCar Black Semigloss | gloss level 5545
semigloss | 39/80040 Black Semigloss | gloss level 6045
semigloss | 49/62070 Rail Bronze | gloss level 6045
semigloss | 49/13370 Off White | gloss level 6045



smooth texture interior | 69/80143 Midnight Black Epoxy Wrinkle
fine texture matte | 39/80200 Black Fine Texture
fine texture matte | 39/80170 Black Wrinkle
fine texture matte | 49/13150 White Fine Texture



fine texture matte | 49/62721 Brown Fine Texture
fine texture matte | 49/80830 Black Matte Fine Texture
fine texture matte | 49/80521 Anti Skid Black
fine texture matte | 49/81241 Black Extra Fine Texture



rough texture matte | 49/81307 NEW Aprx to RAL 9005
rough texture glossy | 39/81420 NEW Aprx to RAL 9005
rough texture glossy | 49/80990 Aprx to RAL 9011 Graphite
rough texture glossy | 49/11570 RTG Nature White

* To increase durability and chemical resistance, TIGER Drylac® recommends the application of a clear top coat for interior and exterior applications. | *** Due to semi transparency of the product, the opacity of the color and finish will depend upon the substrate type and the film thickness. A film below 2.8 mils will exhibit limited hiding.

exterior applications



clear | 16/00030 ❖ Clear Flat Matte
clear | 38/00088 ❖ Clear Matte SD
clear | 49/00280 ❖ Clear Semi Matte
clear | 44/00049 ❖ NEW Geronimo Satin



clear | 44/00018 ❖ Clear Anti-Graffiti Glossy
clear | 38/00001 ❖ Clear High Gloss SD
clear fine texture | 49/00260 ❖ NEW Clear Sandy FT
clear rough texture | 49/03002 ❖ NEW Clear Textured RT



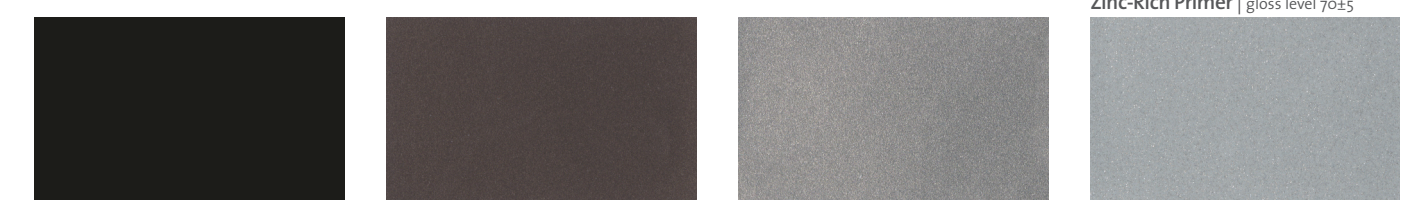
outgassing forgiving | 49/10870 White OGF | gloss level 7045
outgassing forgiving | 49/16130 Light Ivory OGF | gloss level 8045
outgassing forgiving | 49/51610 Moss Green OGF | gloss level 8045
outgassing forgiving | 49/70239 Fed Std Haze Grey OGF | gloss level 4045



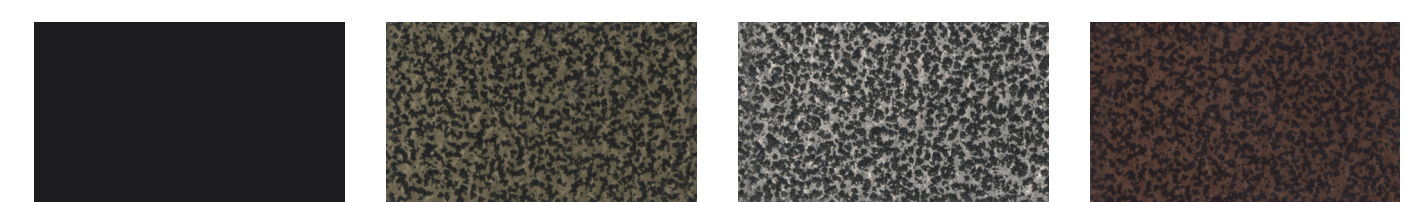
outgassing forgiving | 49/71800 Haze Grey OGF | gloss level 7545
outgassing forgiving | 49/80720 Black OGF | gloss level 7045
outgassing forgiving | 49/91312 Chrome OGF *|***
primer | 09/73841 OGF | gloss level 7045



glossy | 418/11244 Sealkor White | gloss level 8747
primer | 69/11001 NEW Dryprotector White | gloss level 543
primer | 69/70000 Dryprotector | gloss level 342
primer | 69/90500 (USA and Mexico) 69/90701 (Canada) Zinc-Rich Primer | gloss level 7045



semigloss | 223/80001 Sealkor Black | gloss level 6045
metallic | 39/60020 Bronze Matte
metallic | 49/93061 Stardust
metallic | 39/90000 Silver



high gloss | 223/80005 NEW Sealkor Black | gloss level 95+
antique/vein metallic | 59/90050 Antique Bronze Metallic
antique/vein metallic | 59/90820 Antique Silver Metallic
antique/vein metallic | 59/90821 Antique Copper Metallic

❖ Clear coat swatch for indication only. It does not represent the actual clear powder coating. For an accurate assessment and to qualify the finish and shade, it is recommended to obtain a powder coated sample before specifying the product. | ▲ Exhibits limited UV stability.



glossy | 39/40010 Royal Blue | gloss level 8545
glossy | 39/30070 Snowmobile Purple | gloss level 9045
glossy | 39/15020 Almond | gloss level 9045
glossy | 39/15010 Beige | gloss level 9045



glossy | 39/20010 Safety Orange | gloss level 9045
glossy | 39/32920 Pumpkin Orange | gloss level 9045
glossy | 39/30100 Fire Engine Red | gloss level 8545
glossy | 39/30010 Ruby Red | gloss level 80-90



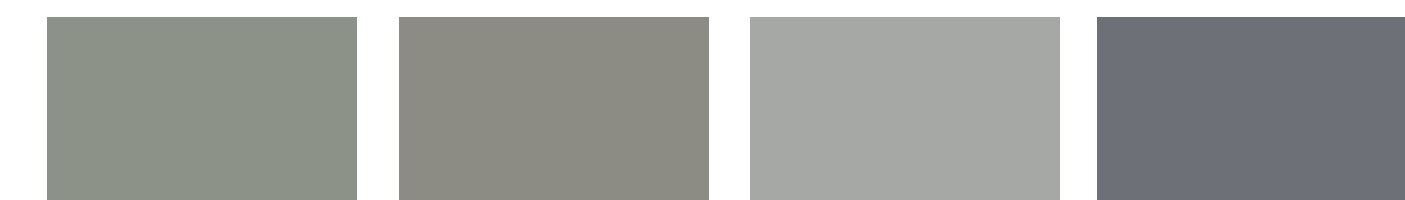
glossy | 39/50060 U.S. Green | gloss level 9045
glossy | 39/20130 Buttercup Yellow | gloss level 8545
glossy | 39/20020 Safety Yellow | gloss level 9045
glossy | 49/20855 CNH Bright Yellow | gloss level 8747



glossy | 49/19365 Tan | gloss level 8545
glossy | 49/25001 ▲ Steel Rack Orange | gloss level 9045
glossy | 49/30052 ▲ Steel Rack Red | gloss level 9045
glossy | 49/20047 ▲ Steel Rack Yellow | gloss level 9045



ASA | 549/70022 ANSI 61
glossy | 59/51648 SD Deer Green | gloss level 8545
glossy | 59/20360 New Cat Yellow | gloss level 8045
glossy | 59/21157 SD Deer Yellow | gloss level 8545



ASA | 49/70082 ASA-61 Semigloss | gloss level 6045
ASA | 39/70020 ASA-61 | gloss level 8045
ASA | 39/70010 ASA-70 | gloss level 8545
ASA | 39/70200 ASA-49 | gloss level 8045

Disclaimer
Color swatches featured in this color chart have been matched to color standards at a 60-degree visual angle under a D65 Daylight primary source. Gloss level on metallic, fine and rough textured swatches cannot be accurately measured. The swatches are to be considered as an indication only. In practice, discrepancy between the color swatch and the actual powder coating may arise. This is due to paper and ink limitations, the influence of light and heat during the color chart production, as well as gloss level, substrate, surface variations, binder systems and pigments, coating thickness and cure oven conditions used during application.

For an accurate color and finish assessment, it is recommended to obtain a powder coated sample panel from TIGER Drylac®.



SERIES 29 MATTE RAL POWDER COATINGS

TIGER Drylac® Series 29 is a new line of select RAL colors in smooth matte finish within a gloss range of 20-35. Series 29 products are polyester TGIC-free, offer good performance to UV and corrosion resistance with very good flow and mechanical properties. This product is ideal for interior and exterior powder coating applications.

Typical applications

- store fixtures
- lawn and garden equipment
- electrical components
- automotive accessories
- bicycles and motorcycles
- lighting
- cabinetry
- sporting goods
- internal ship components
- residential windows and doors
- patio furniture
- agricultural machinery



RAL 1003 - 02921660



RAL 1013 - 02915042



RAL 1015 - 02915200



RAL 1018 - 02920028



RAL 7024 - 02970029



RAL 7032 - 02970035



RAL 7035 - 02972160



RAL 7037 - 02970349



RAL 1019 - 02915370



RAL 1021 - 02921930



RAL 1023 - 02920723



RAL 3001 - 02930009



RAL 7038 - 02970276



RAL 7039 - 02973213



RAL 7040 - 02973330



RAL 7042 - 02970215



RAL 3003 - 02930022



RAL 3004 - 02931320



RAL 3011 - 02931980



RAL 3020 - 02932090



RAL 7043 - 02974700



RAL 7044 - 02970411



RAL 8011 - 02963100



RAL 8014 - 02962090



RAL 5002 - 02946170



RAL 5003 - 02940065



RAL 5005 - 02947080



RAL 5009 - 02947310



RAL 8016 - 02960830



RAL 8019 - 02962060



RAL 8028 - 02963930



RAL 9001 - 02910660



RAL 5011 - 02941930



RAL 5012 - 02941020



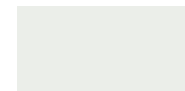
RAL 5013 - 02949940



RAL 5015 - 02947520



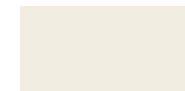
RAL 9002 - 02971750



RAL 9003 - 02910268



RAL 9005 - 02980430



RAL 9010 - 02910470



RAL 5017 - 02940360



RAL 6002 - 02950420



RAL 7001 - 02977900



RAL 7011 - 02970415



RAL 9011 - 02981930



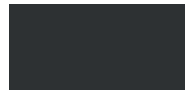
RAL 9016 - 02910999



RAL 7012 - 02979660



RAL 7016 - 02973570



RAL 7021 - 02970240



RAL 7022 - 02970970

Disclaimer

THIS IS A DIGITAL VERSION: The colors/effects shown here will deviate from the original color/effect due to screen technology. The swatches are to be considered as an indication only. For an accurate color and finish assessment, it is recommended to obtain a powder coated sample panel from TIGER Drylac®.