



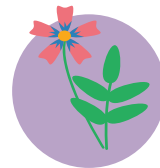
NATURAL &
ORGANIC



BIOACTIVE™ SUPERCHARGER

EXCELLENT FOR EDIBLES AND ALL PLANTS

Purple Cow BioActive Supercharger does exactly what the name says: It supercharges your plants, providing them with living organisms and trace minerals to produce nutrient dense vegetables and fruits. When your plants are healthier, you are healthier. BioActive Supercharger contains humates and kelp meal - which provide Nitrogen, Potassium, Calcium, and other trace minerals. It is a soluble powder that is meant to be used in Purple Cow CX-1 or water, and is an easy-to-use way to feed your plants "immediately."



"WE USED CX-1 IN 2019 WITH TREMENDOUS SUCCESS...WE APPLIED CX-1 AND A LITTLE [BIOACTIVE SUPERCHARGER] EVERY SEVEN DAYS STARTING IN MID-MAY. WE HAD TWO SOLID CYCLES OF PRODUCTION AND HARVESTED AN ADDITIONAL 30 DAYS LONGER THAN USUAL; THE DIFFERENCE WAS CLEARLY CX-1 [AND BIOACTIVE SUPERCHARGER]. HOME RUN ON YIELD

AND DISEASE SUPPRESSION." - Matt Martin, The Martin Family Farm

SUPPLIES
BENEFICIAL
MICROBES,
ORGANIC MATTER
AND TRACE
MINERALS

EASY-TO-USE
SOLUBLE POWDER



Available in:
8 oz pouch (16 pouches/case)

WWW.PURPLECOWORGANICS.COM

RETAIL

BIOACTIVE™ SUPERCHARGER

MANURE
FREE



Ingredients:

- Humic Acid
- Soluble Potash
- Calcium

MAY NATURALLY INCREASE
PLANTS' UPTAKE OF
NUTRIENTS AND WATER

Guaranteed Analysis 3-0-7

- Humic Acid.....40%
- Total Nitrogen (N).....3%
- Ammoniacal Nitrogen.....0.07%
- Water Soluble Nitrogen.....2.83%
- Water Insoluble Nitrogen....0.10%
- Soluble Potash (K₂O).....7%
- Calcium (Ca).....1.25%

USE RECOMMENDATIONS:



Use 1 tablespoon per 1 gallon of Purple Cow CX-1 or water

1 gallon of mixture can be used on up to 250 sq ft

Once dissolved in liquid: Use as soil drench or apply to plants/leaves

Apply as often as weekly

For indoor and outdoor plants

“TOP PIC IS APRIL 3, BOTTOM IS APRIL 30.
A CUSTOMER ASKED WHAT SOIL AND FERTILIZER DO
WE USE TO GET THEM SO BIG. MY ANSWER: PURPLE
COW ORGANICS.”

- Brad Wynne, Veg Out Gardens



Why Use BioActive Supercharger

Soluble - Works in water or Purple Cow CX-1, great for watering cans and tank or backpack sprayers. Also can be sprinkled over soil and watered in

Quick Results - Feeds the plant “immediately” at the leaf surface in addition to the root system

