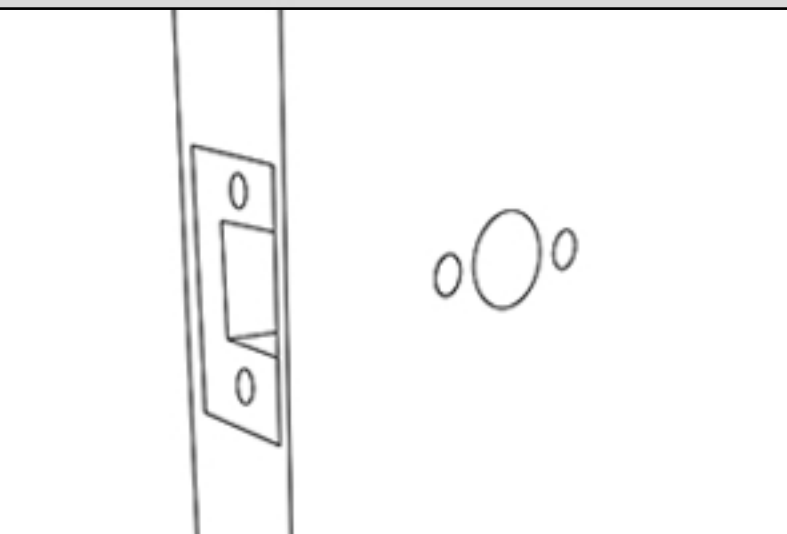


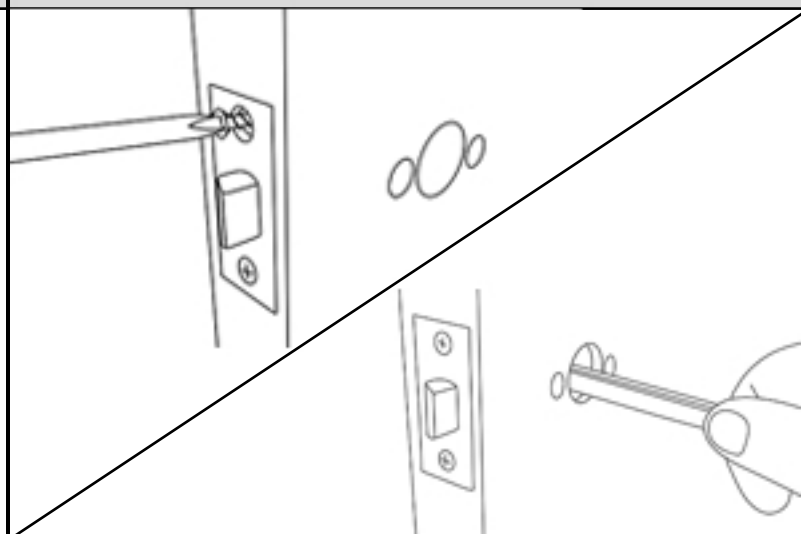
WHAT'S INCLUDED:

- A - LEVERS (2)
- B - ESCUTCHEONS (2)
- C - O-RINGS (2)
- D - CASSETTES (1 X LEFT 1 X RIGHT)
- E - LONG FIXING SCREWS (2)
- F - SHORT FIXING SCREWS (2)
- G - FIXING SLEEVES (2)
- H - SPINDLE (2 PARTS)
- I - PASSAGE LATCH
- J - TIMBER SCREWS (4)
- K - STRIKE PLATE
- L - REMOVAL TOOL
- M - ALLEN KEY

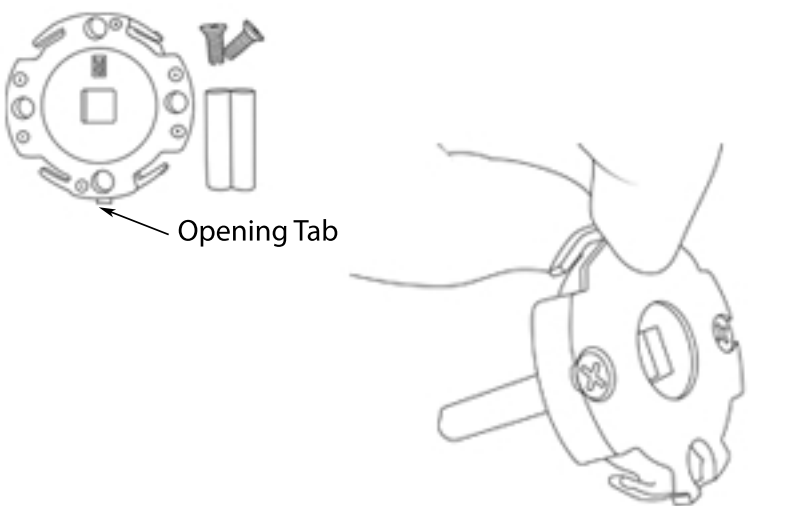
1. Drill holes according to the product template, including checking the latch face into the door so that it sits flush.



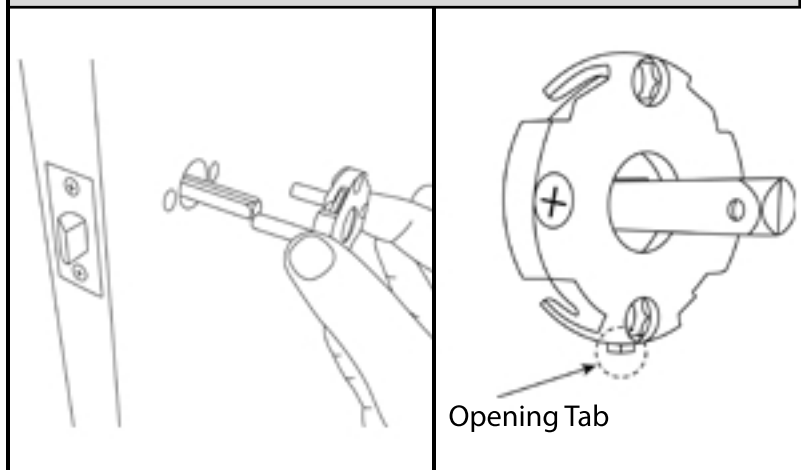
2. Insert latch and fix in with screws. Assemble the spindle (grooves facing downward) through the latch.



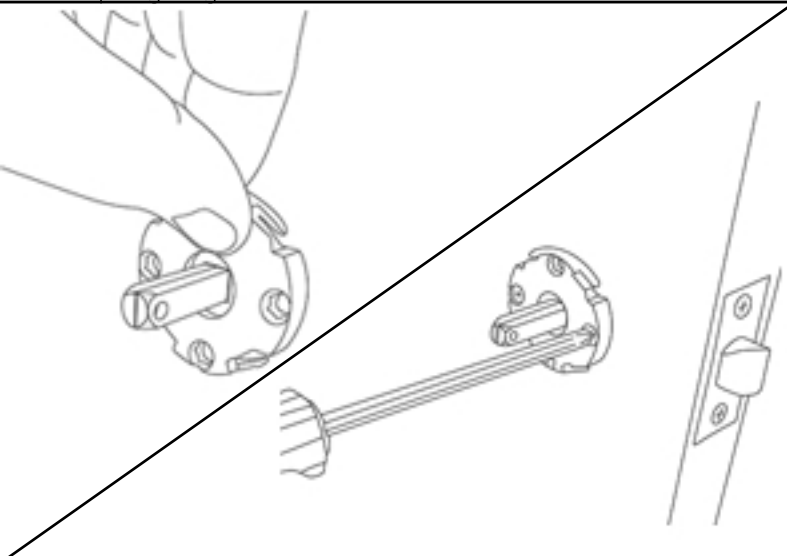
3. Pick up the cassette labelled 'R' and assemble it with the small fixing screws & fixing sleeves. The 'R' should face the door, and opening tab must sit facing downwards.



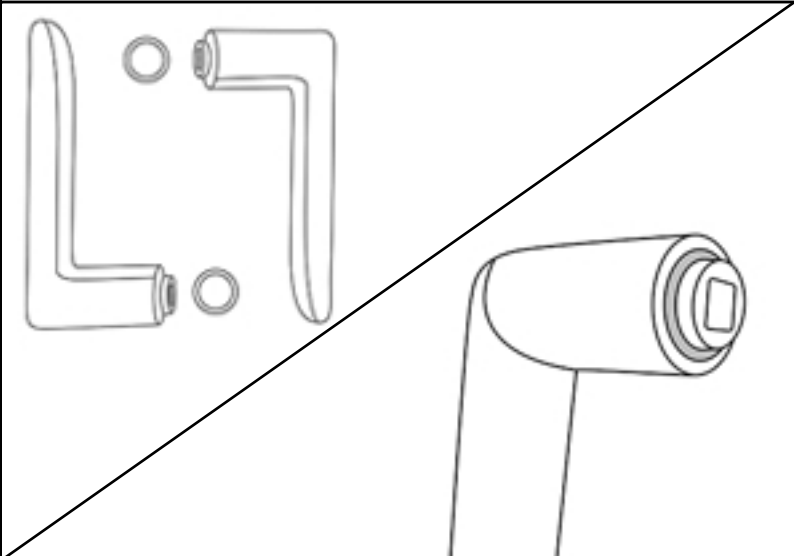
4. Stand with the latch pointing directly at you and slide the assembly onto the RIGHT HAND SIDE of the door. Ensure opening tab is facing down and the printed 'R' on the cassette is pressed against the face of the door.



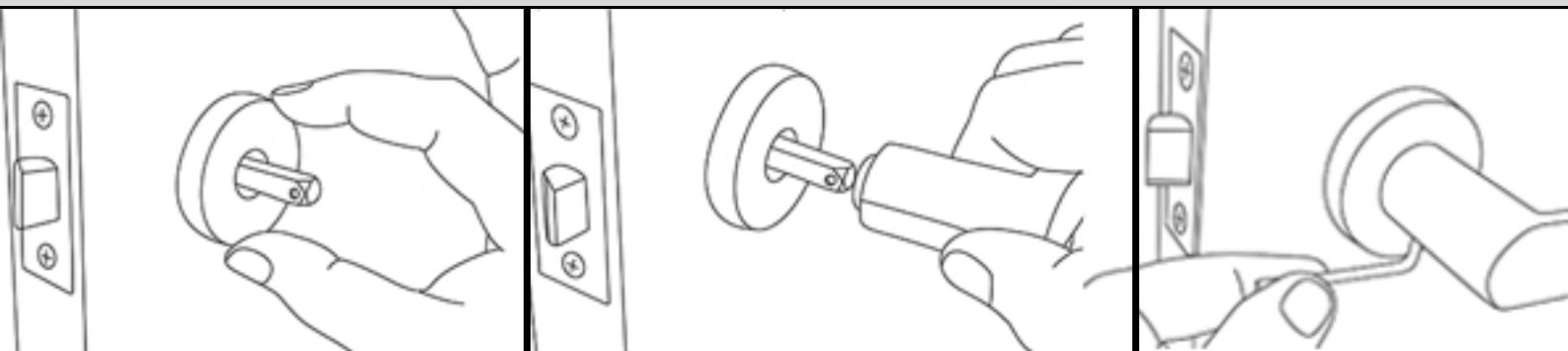
5. Fix the second cassette labeled 'L' to the other side of the door using the longer fixing screws, again ensuring the opening tab is facing down and the 'L' is pressed against the face of the door. Screw up finger tight.



6. Next, slip the o-rings over the connection part of the handles

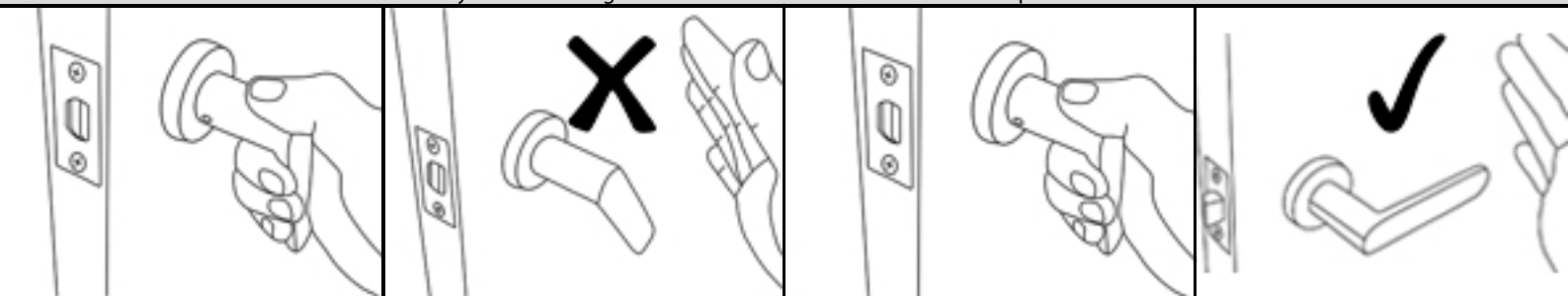


7. Firmly push the escutcheon over cassette R so it is flat against the door and place handle over the spindle. Tighten handle onto spindle using allen key provided.



8. Check & make sure your handle springs back smoothly.

If your handle stays down after lever action, slowly back off exposed screws on cassette L until lever returns to starting position. You will need to adjust these screws according to your door thickness, making sure they are tight enough so the round rose does not move, yet loose enough so the handle returns to the horizontal position.



9. Once this is complete, slide escutcheon over cassette L and press down firmly. Install lever and tighten with allen key. Don't forget to check out strike plate onto the frame and fix on with timber screws provided. You're all done!

