

PACIFIC SQUARE

P019

Standard features

- Frame: wooden structure, seat suspensions in reinforced elastic webbing.
- Paddings in eco-friendly open cell polyurethane foam, with different densities.
- Covering in leather or fabric. Not removable coverings.
- Legs in Gunmetal (Cod.50), Antique bronze (Cod.52).
- Back cushion with pendular mechanism on all elements.
- Stitching type Cod.01 for leather coverings.
- Stitching type Cod.03 for fabric coverings.
- No bed version available.
- Sectional sides finished.

Optional features available upon request with no upcharge

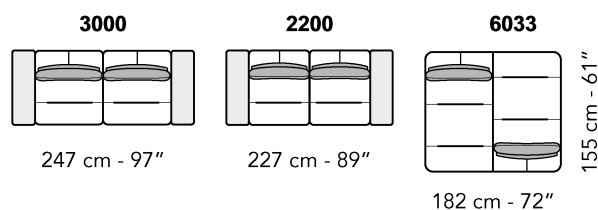
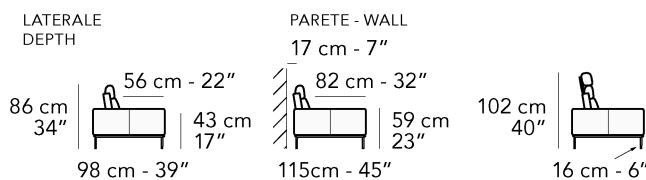
- Stitching, unless differently requested, will be matching the leather or fabric colour. Contrast stitching colour can be ordered at no extra charge. You might use as reference any Nicoline leather.
- For velvet coverings composed mainly of cotton, stitching type Cod.00 will be applied (as per picture below).
- For some fabrics production dept. must apply the stitching Cod.00 (as per picture below).

Optional features available upon request with an upcharge

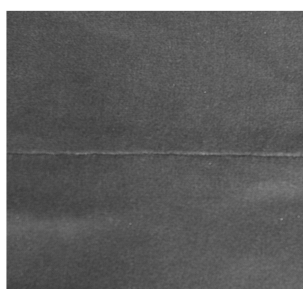
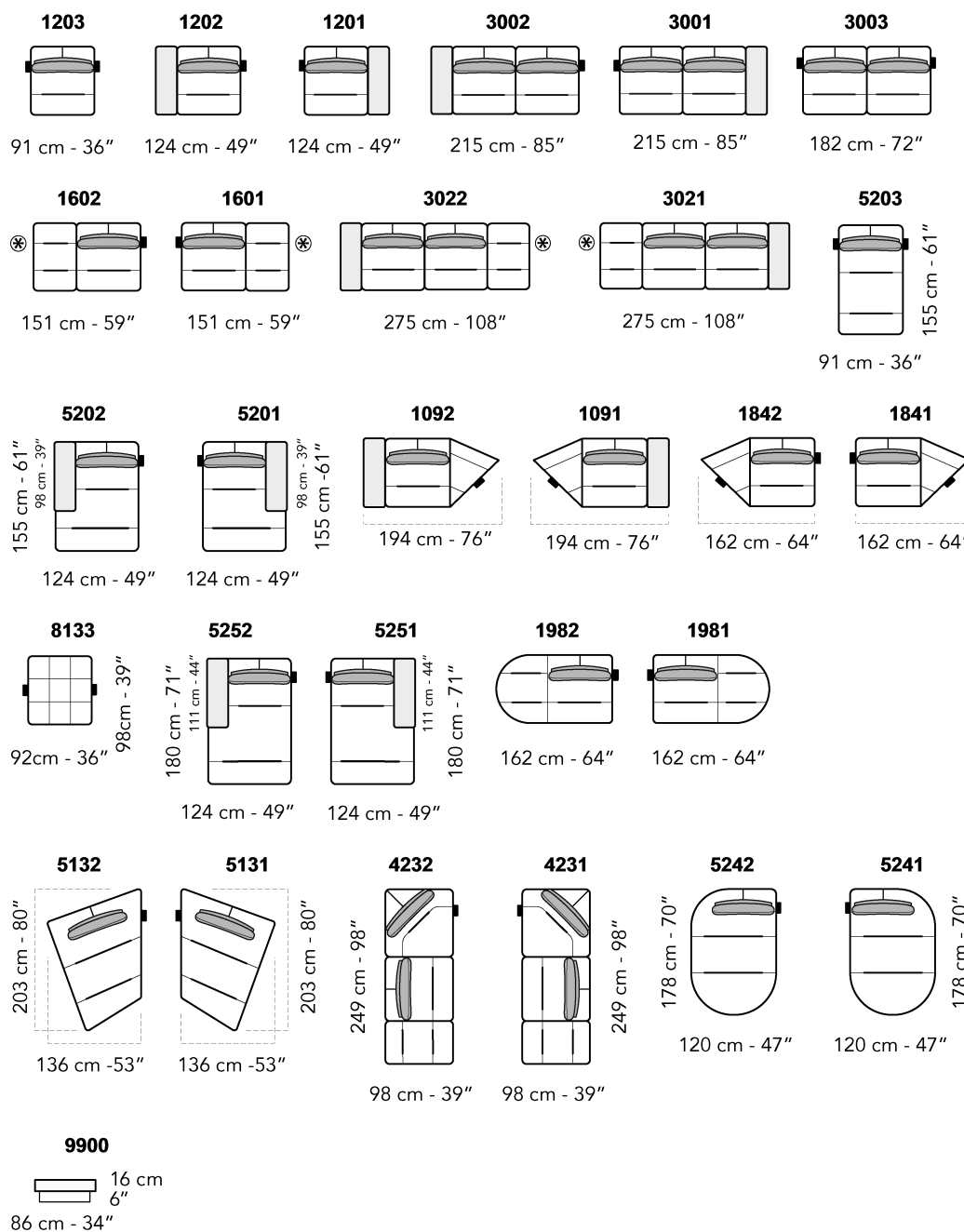
- Headrest (Cod.9900 - 9902) in eco-friendly open cell polyurethane foam and removable covering.
- 7% upcharge for combined coverings. Please refer to the notes at the beginning of pricelist.

Notes

- Versions with asterisk (*) have always the terminal side finished with the possibility to be connected to modular elements.
- Different stitchings not available.
- For some fabrics and velvets production dept. must apply the stitching Cod.00 (as per picture below).

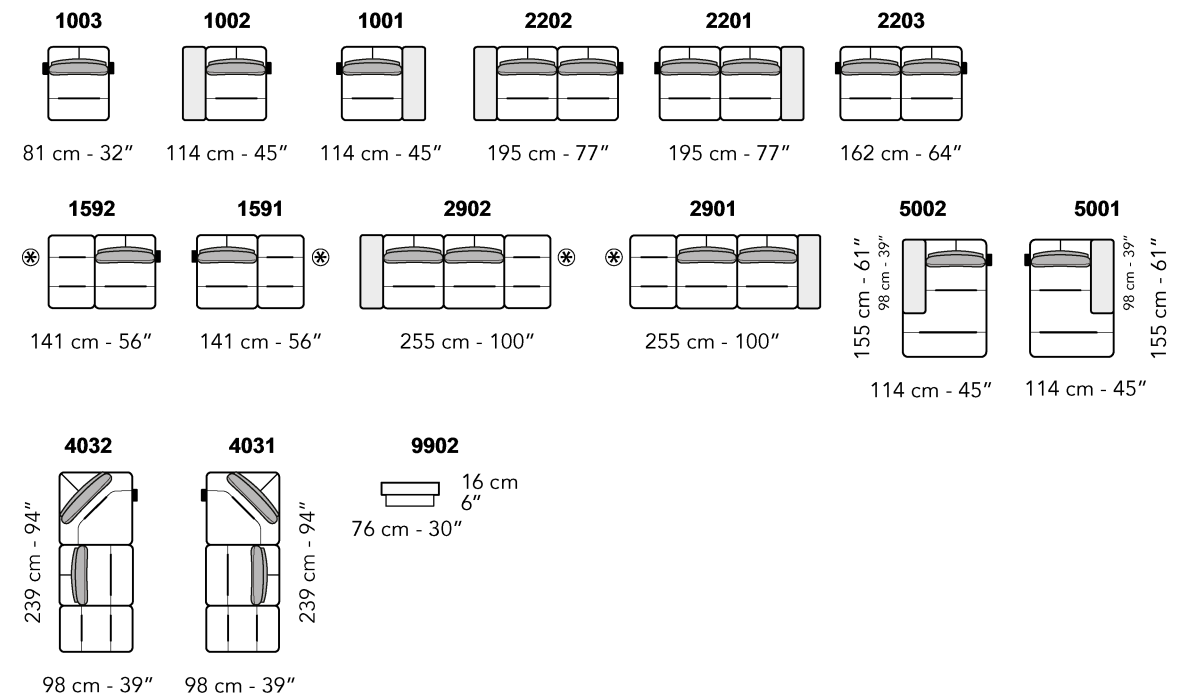


A ↓ all items in group A have the same seat width

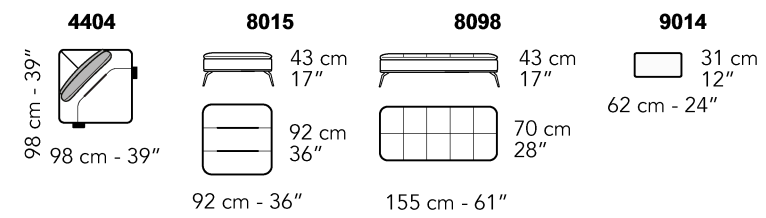


Cod.00

B ↓ all items in group B have the same seat width



↓ These elements are compatible with all groups of versions



Scala 1:100
Ratio 1 to 100

Legenda / Legend

- Spalliera / Back Cushions
 - Bracciolo / Armrest
 - Poggiareni / Kidneyrest
 - Seduta / Seat Cushions
 - Aggancio Componibile / Connector
- ⊗ Lato terminale sempre rifinito e agganciabile agli elementi componibili / Terminal side is always finished and it can also be connected to modular elements