

# nicoline

## Rivestimento tessuto / Fabric covering

Composizione/Composition: **30%VI 16%WO 13%LI 12%CO 10%PA 9%PL 6%SE**

### Caratteristiche/Features

Width cm - Altezza cm **140**

Lightfastness - Resistenza alla luce **5/6**  
UNI EN ISO 105 B02

Weight Gr./Mt I /Peso Gr./Mt I **626**

Martindale/Rubs-Giri **30.000**  
ISO 12947-2

Firetests:

Cal TB 117 **PASS**

Pilling **3/4** Rubs-Giri **5.000**  
DIN EN ISO 12945-2

Cigarettes test - Test sigaretta **PASS**  
BS 5852 MARCH

## Atelier Collection



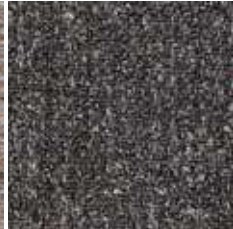
G CATEGORIA / CATEGORY  
TESSUTO / FABRIC



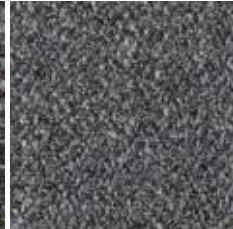
AMO Col 02



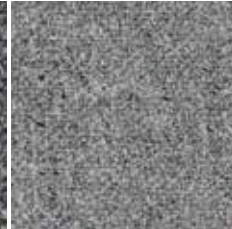
AMO Col 03



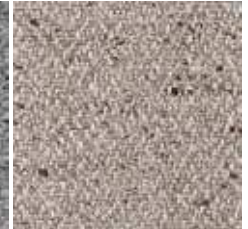
AMO Col 04



AMO Col 05



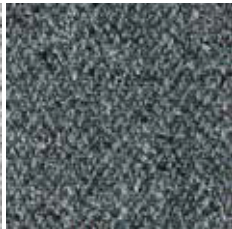
AMO Col 06



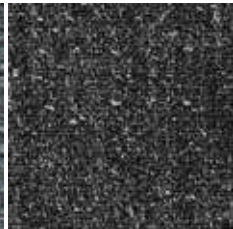
AMO Col 07



AMO Col 08



AMO Col 11



AMO Col 10



### Attenzione

**Note** Tutti i tessuti potrebbero presentare una variazione cromatica tra un lotto e l'altro.

*Le immagini sono indicative e possono differire dalla realtà.  
Photos are just examples and can be different from reality.*

### Attention

**Notes** Each fabric may have differences and variations of colours from batch to batch.

# nicoline

## Rivestimento tessuto / Fabric covering

Composizione/Composition: **54%CO 3%LI 15%PL 28%VI 4%PC**

### Caratteristiche/Features

Width cm - Altezza cm **140**

Weight Gr./Mt I /Peso Gr./Mt I **880**

Martindale/Rubs-Giri **30.000**  
DIN EN ISO 12947-2

Pilling **4** Rubs-Giri **2.000**  
DIN EN ISO 12945-2

Lightfastness - Resistenza alla luce **5**  
DIN EN ISO 105 B02

Firetests:

Cal TB 117 **PASS**

Cigarettes test - Test sigaretta **PASS**  
BS 5852 MARCH: 1990 sez 4 part 1

## Atelier Collection



G CATEGORIA / CATEGORY  
TESSUTO / FABRIC



COC Col 00

COC Col 01

COC Col 02

COC Col 04

COC Col 05

COC Col 06



COC Col 08

COC Col 09

COC Col 10

COC Col 12



### Attenzione

**Note** Tutti i tessuti potrebbero presentare una variazione cromatica tra un lotto e l'altro.

*Le immagini sono indicative e possono differire dalla realtà.  
Photos are just examples and can be different from reality.*

### Attention

**Notes** Each fabric may have differences and variations of colours from batch to batch.

# nicoline

## Rivestimento tessuto / Fabric covering

Composizione/Composition: **100% PL**

### Caratteristiche/Features

Width cm - Altezza cm **140**

Weight Gr./M<sup>2</sup> /Peso Gr./M<sup>2</sup> **500**

Martindale/Rubs-Giri **40.000**  
EN ISO12947-2

Pilling **4** Rubs-Giri **2.000**  
EN ISO 12945-2

Lightfastness - Resistenza alla luce **6**  
EN ISO 105-B02

Firetests:

Cal TB 117 **PASS**

Cigarettes test - Test sigaretta **PASS**  
BS 5852 Source 0

## Atelier Collection



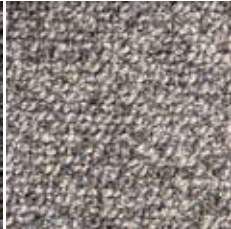
G CATEGORIA / CATEGORY  
TESSUTO / FABRIC



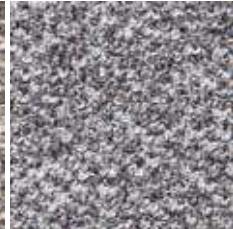
ICA Col 02



ICA Col 03



ICA Col 04



ICA Col 06



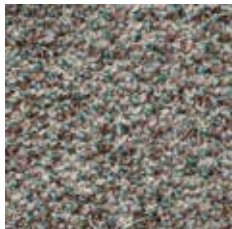
ICA Col 07



ICA Col 08



ICA Col 09



ICA Col 14



ICA Col 17



ICA Col 18



ICA Col 19



ICA Col 20



ICA Col 21



ICA Col 22



### Attenzione

**Note** Tutti i tessuti potrebbero presentare una variazione cromatica tra un lotto e l'altro.

*Le immagini sono indicative e possono differire dalla realtà.  
Photos are just examples and can be different from reality.*

### Attention

**Notes** Each fabric may have differences and variations of colours from batch to batch.

# nicoline

## Rivestimento tessuto / Fabric covering

Composizione/Composition: **57%CO 29%PC 14%PL**

### Caratteristiche/Features

Width cm - Altezza cm **140**

Lightfastness - Resistenza alla luce **5**  
EN ISO 105-B02

Weight Gr./Mt I /Peso Gr./Mt I **800**

Firetests:

Martindale/Rubs-Giri **40.000**  
EN ISO12947-2

Cal TB 117 **PASS**

Pilling **4** Rubs-Giri **2.000**  
EN ISO 12945-2



## Atelier Collection

G CATEGORIA / CATEGORY  
TESSUTO / FABRIC



IMI Col 00

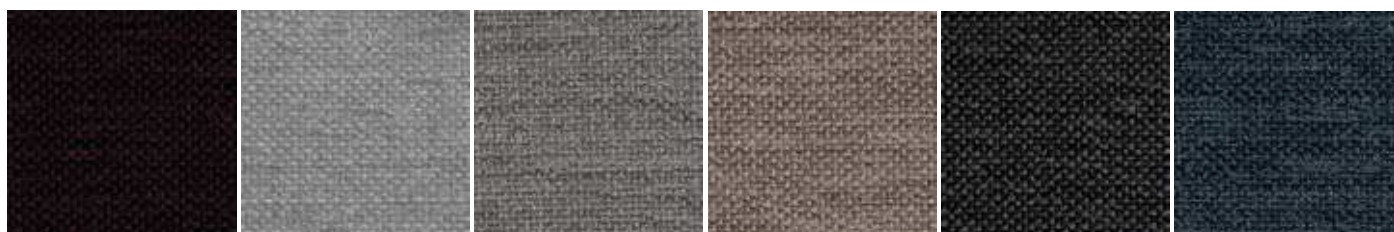
IMI Col 01

IMI Col 02

IMI Col 03

IMI Col 05

IMI Col 06



IMI Col 13

IMI Col 17

IMI Col 18

IMI Col 19

IMI Col 22

IMI Col 23



IMI Col 24

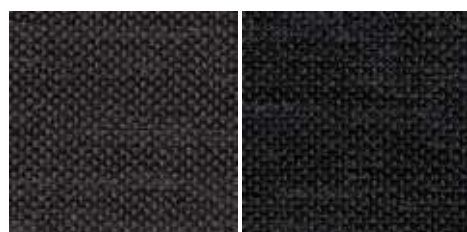
IMI Col 25

IMI Col 27

IMI Col 28

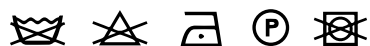
IMI Col 30

IMI Col 35



IMI Col 38

IMI Col 39



### Attenzione

**Note** Tutti i tessuti potrebbero presentare una variazione cromatica tra un lotto e l'altro.

*Le immagini sono indicative e possono differire dalla realtà.  
Photos are just examples and can be different from reality.*

### Attention

**Notes** Each fabric may have differences and variations of colours from batch to batch.

# nicoline

## Rivestimento tessuto / Fabric covering

Composizione/Composition: **46%CO 10%LI 28%PC 10%PL 6%VI**

### Caratteristiche/Features

Width cm - Altezza cm **140**

Weight Gr./Mt I /Peso Gr./Mt I **800**

Martindale/Rubs-Giri **30.000**  
DIN EN ISO12947-2

Pilling **4/5** Rubs-Giri **2.000**  
DIN EN ISO 12945-2

Lightfastness - Resistenza alla luce **5**  
DIN EN ISO 105-B02

Firetests:  
Cal TB 117 **PASS**

## Atelier Collection



G CATEGORIA / CATEGORY  
TESSUTO / FABRIC



LIN Col 01

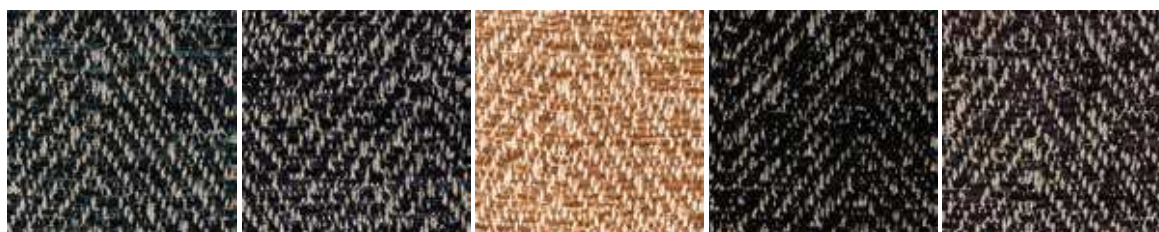
LIN Col 02

LIN Col 04

LIN Col 07

LIN Col 08

LIN Col 11



LIN Col 12

LIN Col 13

LIN Col 15

LIN Col 16

LIN Col 18

*Le immagini sono indicative e possono differire dalla realtà.  
Photos are just examples and can be different from reality.*

**Only for footstools, pillows and accessories**  
**Articolo applicabile solo su pouf, cuscini e accessori**



### Attenzione

**Note** Tutti i tessuti potrebbero presentare una variazione cromatica tra un lotto e l'altro.

### Attention

**Notes** Each fabric may have differences and variations of colours from batch to batch.

# nicoline

## Rivestimento tessuto / Fabric covering

Composizione/Composition: **60%PC 37%PL 3%VI**

### Caratteristiche/Features

Width cm - Altezza cm **140**

Weight Gr./Mt I /Peso Gr./Mt I **720**

Martindale/Rubs-Giri **>45.000**  
EN ISO12947-2

Pilling **4** Rubs-Giri **2.000**  
EN ISO 12945-2

Lightfastness - Resistenza alla luce **4/5**  
EN ISO 105-B02

Firetests:

Cal TB 117 **PASS**

Cigarettes test - Test sigaretta **PASS**  
BS 5852-1:1979



## Atelier Collection

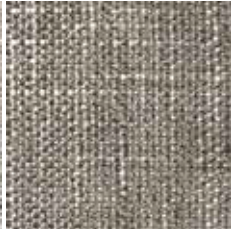
**G** CATEGORIA / CATEGORY  
TESSUTO / FABRIC



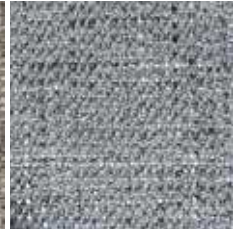
MEM Col01



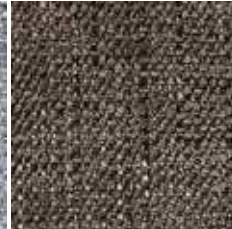
MEM Col02



MEM Col05



MEM Col06



MEM Col10



MEM Col13



MEM Col14



MEM Col16



### Attenzione

**Note** Tutti i tessuti potrebbero presentare una variazione cromatica tra un lotto e l'altro.

*Le immagini sono indicative e possono differire dalla realtà.  
Photos are just examples and can be different from reality.*

### Attention

**Notes** Each fabric may have differences and variations of colours from batch to batch.

# nicoline

## Rivestimento tessuto / Fabric covering

Composizione/Composition: **43%PC 31%PL 16%LI 10%CO**

### Caratteristiche/Features

Width cm - Altezza cm **140**

Weight Gr./Mt I /Peso Gr./Mt I **970**

Martindale/Rubs-Giri **>50.000**  
EN ISO12947-2

Pilling **4/5** Rubs-Giri **2.000**  
UNI EN ISO 12945-2

Lightfastness - Resistenza alla luce **5**  
UNI ISO 105-B02

Firetests:

Cal TB 117 **PASS**

Cigarettes test - Test sigaretta **PASS**  
BS 5852 Source 0

## Atelier Collection



G CATEGORIA / CATEGORY  
TESSUTO / FABRIC



MIO Col 01

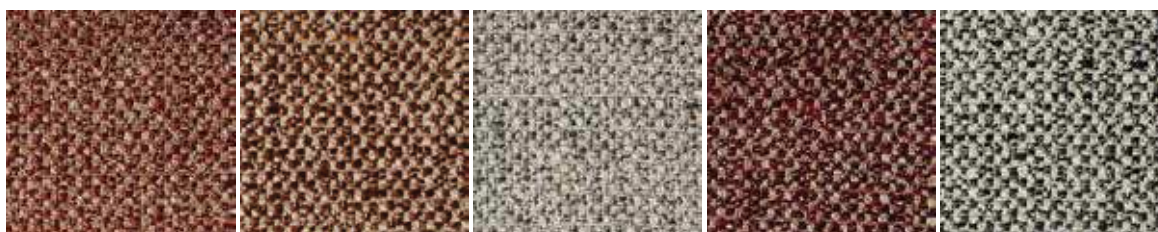
MIO Col 02

MIO Col 04

MIO Col 05

MIO Col 08

MIO Col 19



MIO Col 20

MIO Col 21

MIO Col 22

MIO Col 25

MIO Col 26



### Attenzione

**Note** Tutti i tessuti potrebbero presentare una variazione cromatica tra un lotto e l'altro.

*Le immagini sono indicative e possono differire dalla realtà.  
Photos are just examples and can be different from reality.*

### Attention

**Notes** Each fabric may have differences and variations of colours from batch to batch.

# nicoline

## Rivestimento tessuto / Fabric covering

Composizione/Composition: **30%VI 35%CO 16%PL 10%LI**

### Caratteristiche/Features

Width cm - Altezza cm **138/140**

Lightfastness - Resistenza alla luce **4/5**  
UNI EN ISO 105-B02

Weight Gr./Mt I /Peso Gr./Mt I **980**

Firetests:

Martindale/Rubs-Giri **>40.000**  
UNI EN ISO12947-2

Cal TB 117 **PASS**

Pilling **3/4** Rubs-Giri **2.000**  
UNI EN ISO 12945-2

## Atelier Collection



G CATEGORIA / CATEGORY  
TESSUTO / FABRIC



OLO Col 01

OLO Col 02

OLO Col 03

OLO Col 05

OLO Col 06

OLO Col 07



OLO Col 10

OLO Col 11

OLO Col 12

OLO Col 13

OLO Col 14

OLO Col 15



OLO Col 16

OLO Col 17

OLO Col 18

OLO Col 19

OLO Col 20

OLO Col 21



### Attenzione

**Note** Tutti i tessuti potrebbero presentare una variazione cromatica tra un lotto e l'altro.

*Le immagini sono indicative e possono differire dalla realtà.  
Photos are just examples and can be different from reality.*

### Attention

**Notes** Each fabric may have differences and variations of colours from batch to batch.



# nicoline

## Rivestimento tessuto / Fabric covering

Composizione/Composition: **47%PC 22%PL 11%VI 20%CO**

### Caratteristiche/Features

Width cm - Altezza cm **140**

Weight Gr./Mt I /Peso Gr./Mt I **1000**

Martindale/Rubs-Giri **50.000**  
EN ISO12947-2

Pilling **4/5** Rubs-Giri **2.000**  
UNI EN ISO 12945-2

Lightfastness - Resistenza alla luce **5**  
UNI ISO 105-B02

Firetests:

Cal TB 117 **PASS**

Cigarettes test - Test sigaretta **PASS**  
BS 5852 SOURCE 0

## Atelier Collection



G CATEGORIA / CATEGORY  
TESSUTO / FABRIC



POR Col 01



POR Col 02



POR Col 03



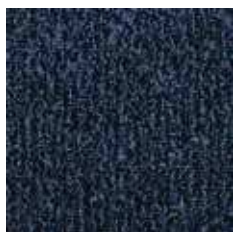
POR Col 04



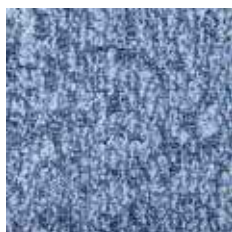
POR Col 06



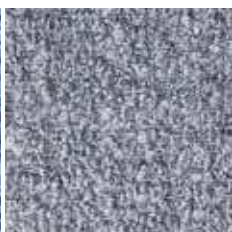
POR Col 10



POR Col 11



POR Col 13



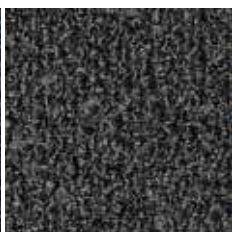
POR Col 15



POR Col 16



POR Col 18



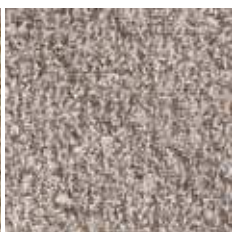
POR Col 19



POR Col 22



POR Col 23



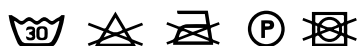
POR Col 24



POR Col 25



POR Col 26



### Attenzione

**Note** Tutti i tessuti potrebbero presentare una variazione cromatica tra un lotto e l'altro.

*Le immagini sono indicative e possono differire dalla realtà.  
Photos are just examples and can be different from reality.*

### Attention

**Notes** Each fabric may have differences and variations of colours from batch to batch.

# nicoline

Rivestimento tessuto / Fabric covering

Composizione/Composition: **52%PL 33%PC 8%WO 7%VI**

Caratteristiche/Features

Width cm - Altezza cm **140**

Weight Gr./Mt I /Peso Gr./Mt I **620**

Martindale/Rubs-Giri **30.000**  
EN ISO12947-2

Pilling **4/5** Rubs-Giri **2.000**  
UNI ISO 12945-2

Lightfastness - Resistenza alla luce **4/5**  
EN ISO 105-B02

Firetests:

Cal TB 117 **PASS**

Cigarettes test - Test sigaretta **PASS**  
BS 5852 - 1:1979



## Atelier Collection

G CATEGORIA / CATEGORY  
TESSUTO / FABRIC



SAN Col 01

SAN Col 02

SAN Col 03

SAN Col 05

SAN Col 09

SAN Col 10



SAN Col 11

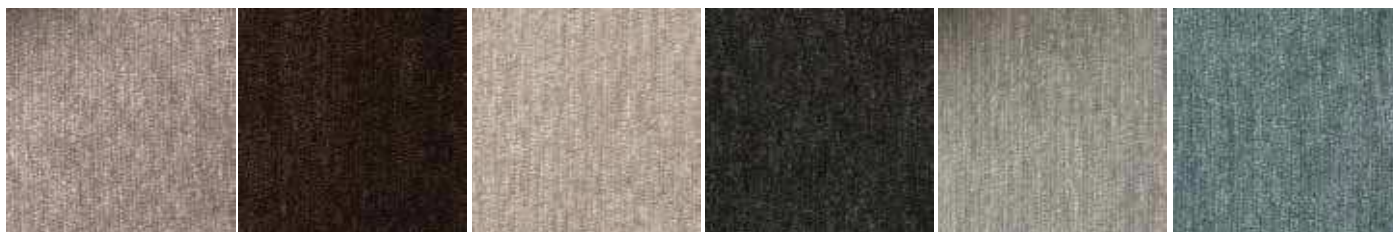
SAN Col 12

SAN Col 20

SAN Col 21

SAN Col 22

SAN Col 23



SAN Col 25

SAN Col 26

SAN Col 30

SAN Col 31

SAN Col 32

SAN Col 34



### Attenzione

**Note** Tutti i tessuti potrebbero presentare una variazione cromatica tra un lotto e l'altro.

*Le immagini sono indicative e possono differire dalla realtà.  
Photos are just examples and can be different from reality.*

### Attention

**Notes** Each fabric may have differences and variations of colours from batch to batch.

# nicoline

## Rivestimento tessuto / Fabric covering

Composizione/Composition: **100%PL**

### Caratteristiche/Features

Width cm - Altezza cm **140**

Weight Gr./Mt I /Peso Gr./Mt I **805**

Martindale/Rubs-Giri **>100.000**  
ISO 12947-2

Pilling **4** Rubs-Giri **2.000**  
ISO 12945-2

Lightfastness - Resistenza alla luce **4/5**  
ISO 105 B02

Firetests:  
Cal TB 117 **PASS**

## Flair Collection



**D** CATEGORIA / CATEGORY  
TESSUTO / FABRIC



CRI Col 101

CRI Col 301

CRI Col 400

CRI Col 401

CRI Col 402

CRI Col 600



CRI Col 601

CRI Col 602

CRI Col 603

CRI Col 604

CRI Col 700

CRI Col 703



CRI Col 801

CRI Col 802



### Attenzione

**Note** Tutti i tessuti potrebbero presentare una variazione cromatica tra un lotto e l'altro.

*Le immagini sono indicative e possono differire dalla realtà.  
Photos are just examples and can be different from reality.*

### Attention

**Notes** Each fabric may have differences and variations of colours from batch to batch.

# nicoline

## Rivestimento tessuto / Fabric covering

Composizione/Composition: **100%PL**

### Caratteristiche/Features

Width cm - Altezza cm **140**

Weight Gr./M<sup>2</sup> /Peso Gr./M<sup>2</sup> **390**

Martindale/Rubs-Giri **>100.000**

DIN EN ISO12947-1

DIN EN ISO12947-2

Pilling **4** Rubs-Giri **2.000**

DIN EN ISO 12945-2

Lightfastness - Resistenza alla luce **5**  
DIN EN ISO 105- BO2

Firetests:

Cal TB 117 **PASS**

Cigarettes test - Test sigaretta **PASS**  
BS 5852 Source 0 - DIN EN 1021-1

## Flair Collection



**D** CATEGORIA / CATEGORY  
TESSUTO / FABRIC



IBO Col 01

IBO Col 04

IBO Col 06

IBO Col 08

IBO Col 24

IBO Col 26



IBO Col 35

IBO Col 37

IBO Col 47

IBO Col 54

IBO Col 56

IBO Col 137



### Attenzione

**Note** Tutti i tessuti potrebbero presentare una variazione cromatica tra un lotto e l'altro.

*Le immagini sono indicative e possono differire dalla realtà.  
Photos are just examples and can be different from reality.*

### Attention

**Notes** Each fabric may have differences and variations of colours from batch to batch.

# nicoline

## Rivestimento tessuto / Fabric covering

Composizione/Composition: **40%VI 31%CO 21%PL 8%LI**

### Caratteristiche/Features

Width cm - Altezza cm **138/140**

Weight Gr./Mt I /Peso Gr./Mt I **640**

Martindale/Rubs-Giri **18.000**  
EN ISO12947-2

Pilling **3** Rubs-Giri **2.000**  
UNI EN ISO 12945-2

Lightfastness - Resistenza alla luce **4**  
UNI EN ISO 105-B02

Firetests:

Cal TB 117 **PASS**

Cigarettes test - Test sigaretta **PASS**  
BS 5852 -1979

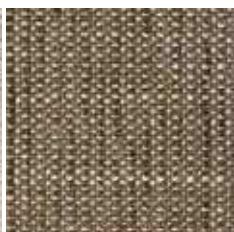


## Flair Collection

D CATEGORIA / CATEGORY  
TESSUTO / FABRIC



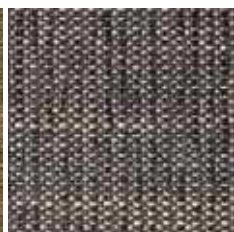
KOS Col 01



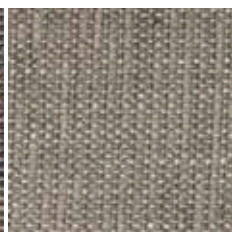
KOS Col 02



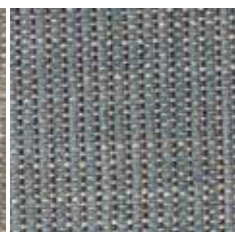
KOS Col 04



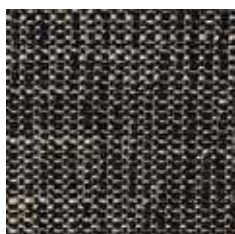
KOS Col 06



KOS Col 07



KOS Col 08



KOS Col 10



### Attenzione

**Note** Tutti i tessuti potrebbero presentare una variazione cromatica tra un lotto e l'altro.

*Le immagini sono indicative e possono differire dalla realtà.  
Photos are just examples and can be different from reality.*

### Attention

**Notes** Each fabric may have differences and variations of colours from batch to batch.

# nicoline

Rivestimento tessuto / Fabric covering

Composizione/Composition: **70%PL 30%PC**

Caratteristiche/Features

Width cm - Altezza cm **140**

Weight Gr./M<sup>2</sup> /Peso Gr./M<sup>2</sup> **475**

Martindale/Rubs-Giri **50.000**

UNI EN ISO12947-1

UNIEN ISO12947-2

Pilling **4** Rubs-Giri **2.000**

UNI EN ISO 105-B02

Lightfastness - Resistenza alla luce **3/4-5**  
UNI 7639/89

Firetests:

Cal TB 117 **PASS**

Cigarettes test - Test sigaretta **PASS**  
BS 5852 SCH 4 PART 1

## Flair Collection



D CATEGORIA / CATEGORY  
TESSUTO / FABRIC



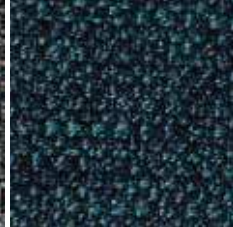
LEO Col 02



LEO Col 130



LEO Col 14



LEO Col 15



LEO Col 16



LEO Col 17



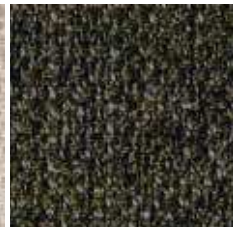
LEO Col 19



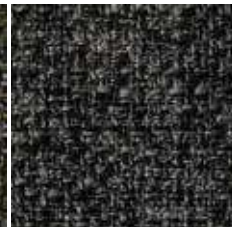
LEO Col 20



LEO Col 200



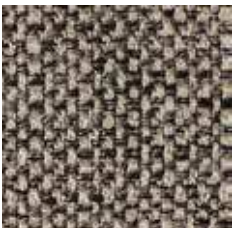
LEO Col 204



LEO Col 205



LEO Col 615



LEO Col 622



### Attenzione

**Note** Tutti i tessuti potrebbero presentare una variazione cromatica tra un lotto e l'altro.

*Le immagini sono indicative e possono differire dalla realtà.  
Photos are just examples and can be different from reality.*

### Attention

**Notes** Each fabric may have differences and variations of colours from batch to batch.

# nicoline

## Rivestimento tessuto / Fabric covering

Composizione/Composition: **100%PL**

### Caratteristiche/Features

Width cm - Altezza cm **140**

Weight Gr./M<sup>2</sup> /Peso Gr./M<sup>2</sup> **570**

Martindale/Rubs-Giri **>100.000**  
EN ISO12947-1  
EN ISO12947-2

Pilling **4/5** Rubs-Giri **5.000**  
EN ISO 12945-2

Lightfastness - Resistenza alla luce **5**  
EN ISO 105-B02

Firetests:

Cal TB 117 **PASS**

Cigarettes test - Test sigaretta **PASS**  
BS 5852 Source 0 - DIN EN 1021-1



## Flair Collection

D CATEGORIA / CATEGORY  
TESSUTO / FABRIC



LIR Col 01

LIR Col 04

LIR Col 13

LIR Col 24

LIR Col 26

LIR Col 39



LIR Col 44

LIR Col 46

LIR Col 47

LIR Col 48

LIR Col 56

LIR Col 59



LIR Col 77



### Attenzione

**Note** Tutti i tessuti potrebbero presentare una variazione cromatica tra un lotto e l'altro.

*Le immagini sono indicative e possono differire dalla realtà.  
Photos are just examples and can be different from reality.*

### Attention

**Notes** Each fabric may have differences and variations of colours from batch to batch.

# nicoline



## Flair Collection

D CATEGORIA / CATEGORY  
TESSUTO / FABRIC

## Rivestimento tessuto / Fabric covering

Composizione/Composition: **50%CO 20%PL 15%VI 10%LI 5%AF**

### Caratteristiche/Features

Width cm - Altezza cm **140**

Weight Gr./Mt I /Peso Gr./Mt I **650**

Martindale/Rubs-Giri **>30.000**  
UNI EN ISO12947-2

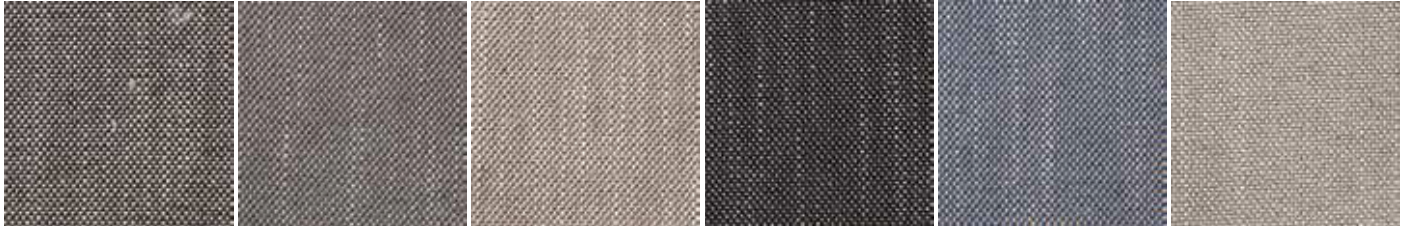
Pilling **4** Rubs-Giri **2.000**  
UNI EN ISO 12945-2

Lightfastness - Resistenza alla luce **4/5**  
UNI EN ISO 105-B02

Firetests:

Cal TB 117 **PASS**

Cigarettes test - Test sigaretta **PASS**  
BS 5852 SCH 4 PART 1



OCO Col 01

OCO Col 03

OCO Col 06

OCO Col 08

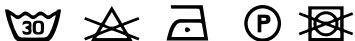
OCO Col 09

OCO Col 11



OCO Col 16

OCO Col 42



### Attenzione

**Note** Tutti i tessuti potrebbero presentare una variazione cromatica tra un lotto e l'altro.

*Le immagini sono indicative e possono differire dalla realtà.  
Photos are just examples and can be different from reality.*

### Attention

**Notes** Each fabric may have differences and variations of colours from batch to batch.



# nicoline

## Rivestimento tessuto / Fabric covering

Composizione/Composition: **90%PES 10%CO**

### Caratteristiche/Features

Width cm - Altezza cm **140**

Weight Gr./Mt I /Peso Gr./Mt I **980**

Martindale/Rubs-Giri **90.000**  
EN ISO12947-2

Pilling **4** Rubs-Giri **2.000**  
EN ISO 12945-2

Lightfastness - Resistenza alla luce **5**  
UNI 7639-89

Firetests:

Cal TB 117 **PASS**

Cigarettes test - Test sigaretta **PASS**  
BS 5852 Source 0,1 - ENI 1021 PART 1,2

## Flair Collection



D CATEGORIA / CATEGORY  
TESSUTO / FABRIC



ONE Col 00

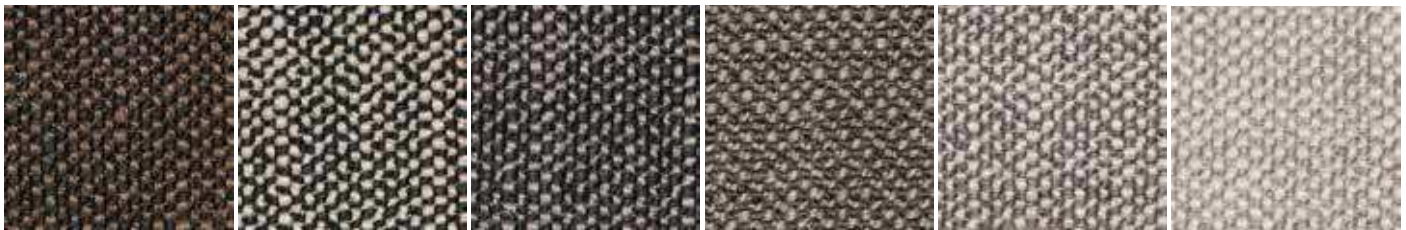
ONE Col 01

ONE Col 02

ONE Col 04

ONE Col 08

ONE Col 09



ONE Col 10

ONE Col 11

ONE Col 12

ONE Col 13

ONE Col 14

ONE Col 15



### Attenzione

**Note** Tutti i tessuti potrebbero presentare una variazione cromatica tra un lotto e l'altro.

*Le immagini sono indicative e possono differire dalla realtà.  
Photos are just examples and can be different from reality.*

### Attention

**Notes** Each fabric may have differences and variations of colours from batch to batch.

# nicoline

Rivestimento tessuto / Fabric covering

Composizione/Composition: **78%PL 10%PC 7%LI 5%WO**

Caratteristiche/Features

Width cm - Altezza cm **140**

Lightfastness - Resistenza alla luce **4/5**  
UNI EN ISO 105-B02

Weight Gr./Mt I /Peso Gr./Mt I **475**

Firetests:

Cal TB 117 **PASS**

Martindale/Rubs-Giri **100.000**

UNI EN ISO12947-1

UNI EN ISO12947-2

Pilling **4** Rubs-Giri **2.000**

UNI EN ISO 12945-2

## Flair Collection



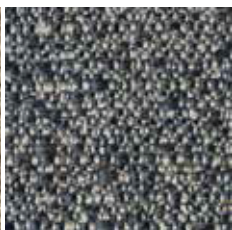
D CATEGORIA / CATEGORY  
TESSUTO / FABRIC



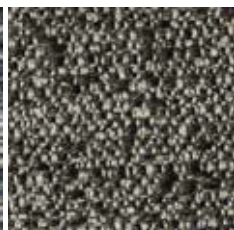
PER Col 01



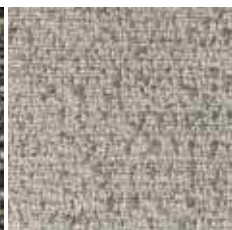
PER Col 02



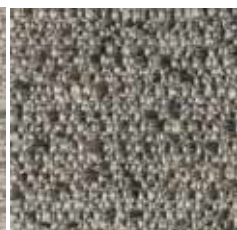
PER Col 14



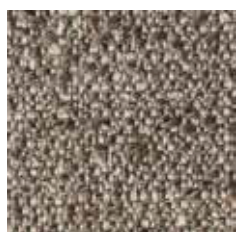
PER Col 18



PER Col 19



PER Col 616



PER Col 622



### Attenzione

**Note** Tutti i tessuti potrebbero presentare una variazione cromatica tra un lotto e l'altro.

*Le immagini sono indicative e possono differire dalla realtà.  
Photos are just examples and can be different from reality.*

### Attention

**Notes** Each fabric may have differences and variations of colours from batch to batch.

# nicoline

## Rivestimento tessuto / Fabric covering

Composizione/Composition: **90%PL 10%VI**

### Caratteristiche/Features

Width cm - Altezza cm **140**

Weight Gr./Mt I /Peso Gr./Mt I **490**

Martindale/Rubs-Giri **100.000**

DIN EN ISO12947-1

DIN EN ISO12947-2

Pilling **5** Rubs-Giri **2.000**

EN ISO 12945-2

Lightfastness - Resistenza alla luce **4/5**  
EN ISO 105-B02

Firetests:

Cal TB 117 **PASS**

Cigarettes test - Test sigaretta **PASS**  
BS 5852 PART 1- SOURCE 0



## Flair Collection

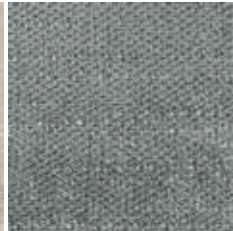
**D** CATEGORIA / CATEGORY  
TESSUTO / FABRIC



YUC Col 02



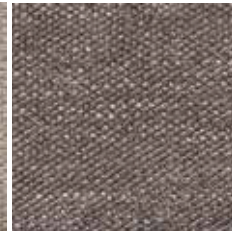
YUC Col 04



YUC Col 07



YUC Col 14



YUC Col 26



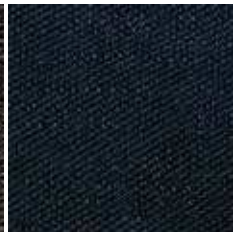
YUC Col 34



YUC Col 36



YUC Col 46



YUC Col 47



YUC Col 54



### Attenzione

**Note** Tutti i tessuti potrebbero presentare una variazione cromatica tra un lotto e l'altro.

*Le immagini sono indicative e possono differire dalla realtà.  
Photos are just examples and can be different from reality.*

### Attention

**Notes** Each fabric may have differences and variations of colours from batch to batch.

# nicoline

## Rivestimento tessuto / Fabric covering

Composizione/Composition: **100%CO**

### Caratteristiche/Features

Width cm - Altezza cm **140**

Weight Gr./Mt I /Peso Gr./Mt I **630**

Martindale/Rubs-Giri **100.000**  
DIN EN ISO12947-2

Lightfastness - Resistenza alla luce **3/4**  
EN ISO 105-B02

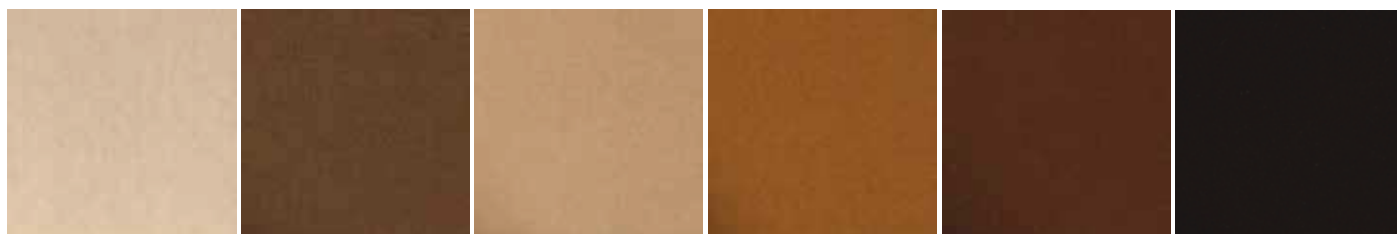
Firetests:

Cal TB 117 **PASS**

## Pure Velvet Collection



G CATEGORIA / CATEGORY  
TESSUTO / FABRIC



REG Col 01

REG Col 02

REG Col 05

REG Col 06

REG Col 08

REG Col 09



REG Col 12

REG Col 13

REG Col 17

REG Col 19

REG Col 33

REG Col 34



REG Col 36

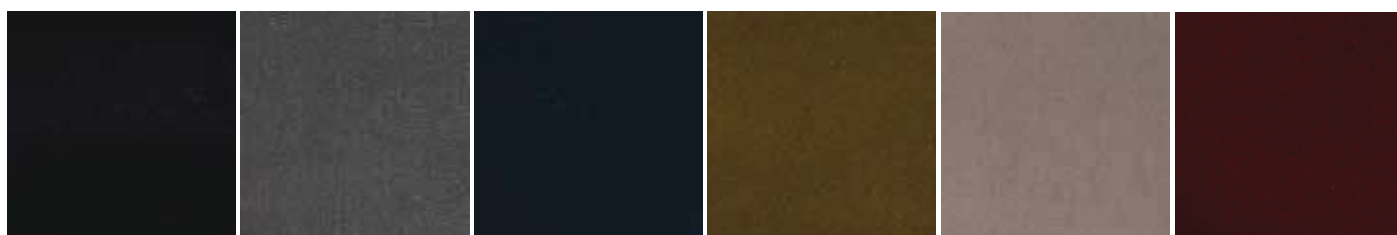
REG Col 38

REG Col 44

REG Col 46

REG Col 47

REG Col 48



REG Col 49

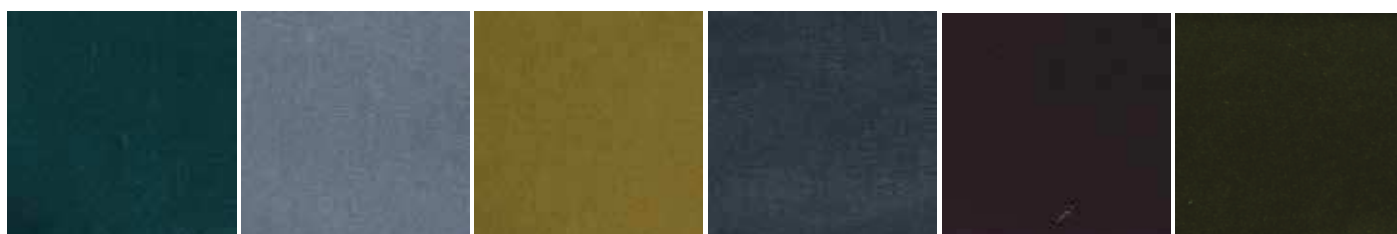
REG Col 53

REG Col 54

REG Col 59

REG Col 60

REG Col 62



REG Col 65

REG Col 66

REG Col 68

REG Col 70

REG Col 72

REG Col 75



### Attenzione

**Note** Tutti i tessuti potrebbero presentare una variazione cromatica tra un lotto e l'altro.

*Le immagini sono indicative e possono differire dalla realtà.  
Photos are just examples and can be different from reality.*

### Attention

**Notes** Each fabric may have differences and variations of colours from batch to batch.

# nicoline

## Rivestimento tessuto / Fabric covering

Composizione/Composition: **100% PL**

### Caratteristiche/Features

Width cm - Altezza cm **140**

Weight Gr./M<sup>2</sup> /Peso Gr./M<sup>2</sup> **430**

Martindale/Rubs-Giri **>100.000**  
EN ISO12947-1  
EN ISO12947-2

Pilling **5** Rubs-Giri **2.000**  
EN ISO 12945-2

Lightfastness - Resistenza alla luce **5**  
EN ISO 105- B02

Firetests:

Cal TB 117 **PASS**

Cigarettes test - Test sigaretta **PASS**  
BS 5852 Source 0 - DIN EN 1021-1

## Soft Velvet Collection



D CATEGORIA / CATEGORY  
TESSUTO / FABRIC



### Attenzione

**Note** Tutti i tessuti potrebbero presentare una variazione cromatica tra un lotto e l'altro.

*Le immagini sono indicative e possono differire dalla realtà.  
Photos are just examples and can be different from reality.*

### Attention

**Notes** Each fabric may have differences and variations of colours from batch to batch.

# nicoline

## Rivestimento tessuto / Fabric covering

Composizione/Composition: **100% PL**

### Caratteristiche/Features

Width cm - Altezza cm **140**

Weight Gr./Mt I /Peso Gr./Mt I **860**

Martindale/Rubs-Giri **80.000**  
BS 5690

Pilling **5** Rubs-Giri **2.000**  
BS 5811

Lightfastness - Resistenza alla luce **4/5**  
UNI 7639-89

Firetests:

Cal TB 117 **PASS**

Cigarettes test - Test sigaretta **PASS**  
BS 5852 Source 01



## Tech Velvet Collection

G CATEGORIA / CATEGORY  
TESSUTO / FABRIC



DOD Col 01

DOD Col 02

DOD Col 03

DOD Col 07

DOD Col 08

DOD Col 10



DOD Col 12

DOD Col 13

DOD Col 14

DOD Col 15

DOD Col 18

DOD Col 19



DOD Col 21

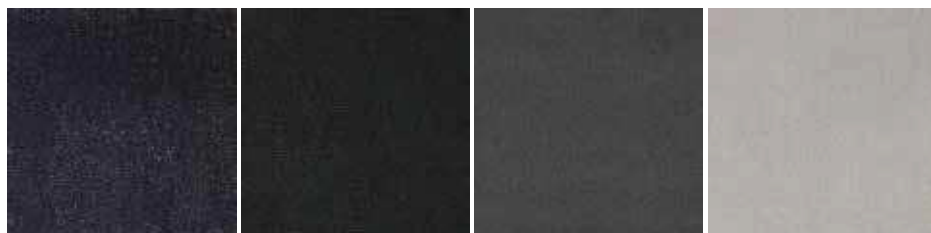
DOD Col 22

DOD Col 23

DOD Col 32

DOD Col 33

DOD Col 34



DOD Col 35

DOD Col 37

DOD Col 38

DOD Col 39



### Attenzione

**Note** Tutti i tessuti potrebbero presentare una variazione cromatica tra un lotto e l'altro.

*Le immagini sono indicative e possono differire dalla realtà.  
Photos are just examples and can be different from reality.*

### Attention

**Notes** Each fabric may have differences and variations of colours from batch to batch.

# nicoline

## Rivestimento tessuto / Fabric covering

Composizione/Composition: **55%VI 45%CO**

### Caratteristiche/Features

Width cm - Altezza cm **140**

Lightfastness - Resistenza alla luce **5**  
ISO 105-B02

Weight Gr./Mt I /Peso Gr./Mt I **700**

Martindale/Rubs-Giri **50.000**  
ISO12947-2

Pilling **4** Rubs-Giri **2.000**  
ISO 12945-2

## Cloudy Velvet Collection



G CATEGORIA / CATEGORY  
TESSUTO / FABRIC



VEG Col 06

VEG Col 10

VEG Col 12

VEG Col 16

VEG Col 34

VEG Col 37



VEG Col 41

VEG Col 44

VEG Col 45

VEG Col 47

VEG Col 48

VEG Col 51



VEG Col 52

VEG Col 53

VEG Col 54

VEG Col 59

VEG Col 61

VEG Col 67



VEG Col 68

VEG Col 71

VEG Col 83

VEG Col 84



### Attenzione

**Note** Tutti i tessuti potrebbero presentare una variazione cromatica tra un lotto e l'altro.

*Le immagini sono indicative e possono differire dalla realtà.  
Photos are just examples and can be different from reality.*

### Attention

**Notes** Each fabric may have differences and variations of colours from batch to batch.