

CATTELAN ITALIA FINISHES

Book 1 – Materials

CERAMIC, WOOD, GLASS, METALS, CRYSTALART

Book 2 – Leather

SOFT LEATHERS

Book 3 – Fabric

POLYESTER, COTTONS, MIXED

材料 Материалы Materiales Matériaux Materialien Materials Materiali

cattelan
italia

CAMPIONARIO MATERIALI



RN Rovere Naturale



HR Rovere Heritage



NC Noce Canaletto



RB Rovere Bruciato



OLM73 Olmo Nero

木质

дерево

Madera

Bois

Holz

Wood

Legni



KM03 Supreme



KM05 Matt
Golden Calacatta



KM06 Glossy
Golden Calacatta



KM02 Alabastro



KM11 Makalu



KM04 Ardesia



KM10 Emperador



KM07 Matt Portoro

KM08 Glossy Portoro



KM09 Glossy Sahara Noir

陶瓷

Керамика

Cerámica

Céramique

Keramik

Ceramic

Ceramica



KM12 Breccia



KM13 Arenal



KZ20 Zefiro

Crystalart



CY01 CrystalArt 01



CY02 CrystalArt 02



L7 Bianco Lucido



OP7 Bianco Opaco



L3 Nero Lucido



OP17 Nero Opaco



OP69 Graphite



L4 Moka Lucido



M11 Laccato Titanio



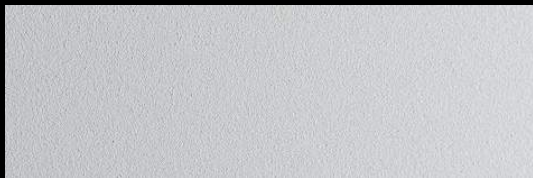
GF11 Goffrato Titanio



Brushed Bronze



GF15 Goffrato Bronzo



GF71 Goffrato Bianco



GF69 Goffrato Graphite



GF73 Goffrato Nero

亮漆

лакировка

Lacado

Laqués

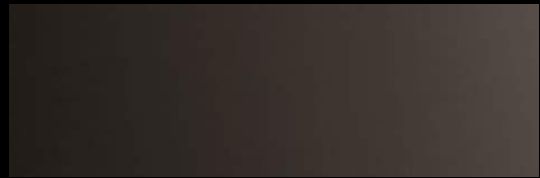
Lackiert

Lacquered

Laccati



08 Cromo



06 Cromo Nero



11 Titanio Satinato



Brushed Bronze



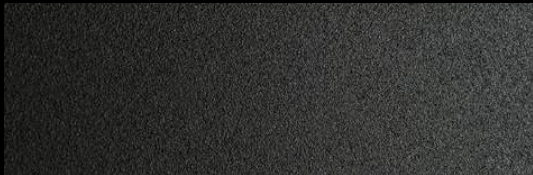
GFM71 Goffrato Bianco



Brushed Grey



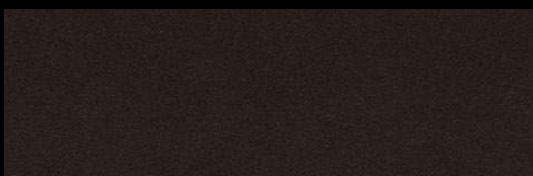
GFM11 Goffrato Titanio



GFM69 Goffrato Graphite



GFM73 Goffrato Nero



GFM18 Goffrato Bronzo

金属

металл

Metal

Metall

Métal

Metal

Metalli

材料 Материалы Materiales Matériaux Materialien Materials Materiali

CATTELANITALIA.COM



革

Кожа

Piel

Softleder

Cuir Mince

Soft Leather

cattelan
italia

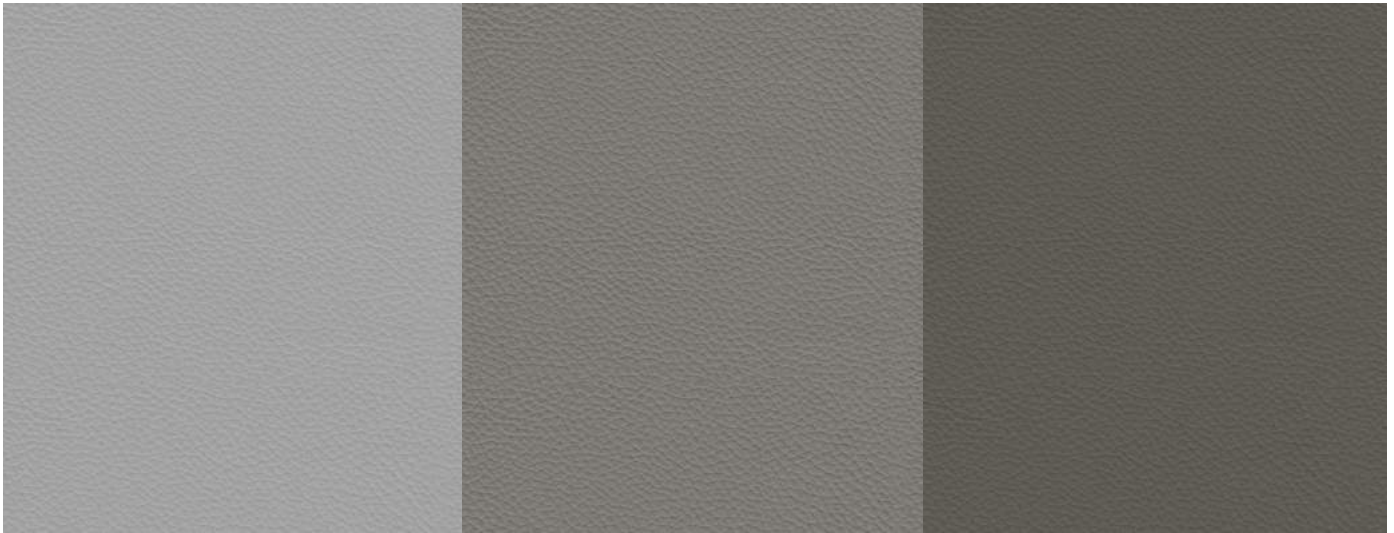
CAMPIONARIO PELLE



971 Bianco

961 Latte

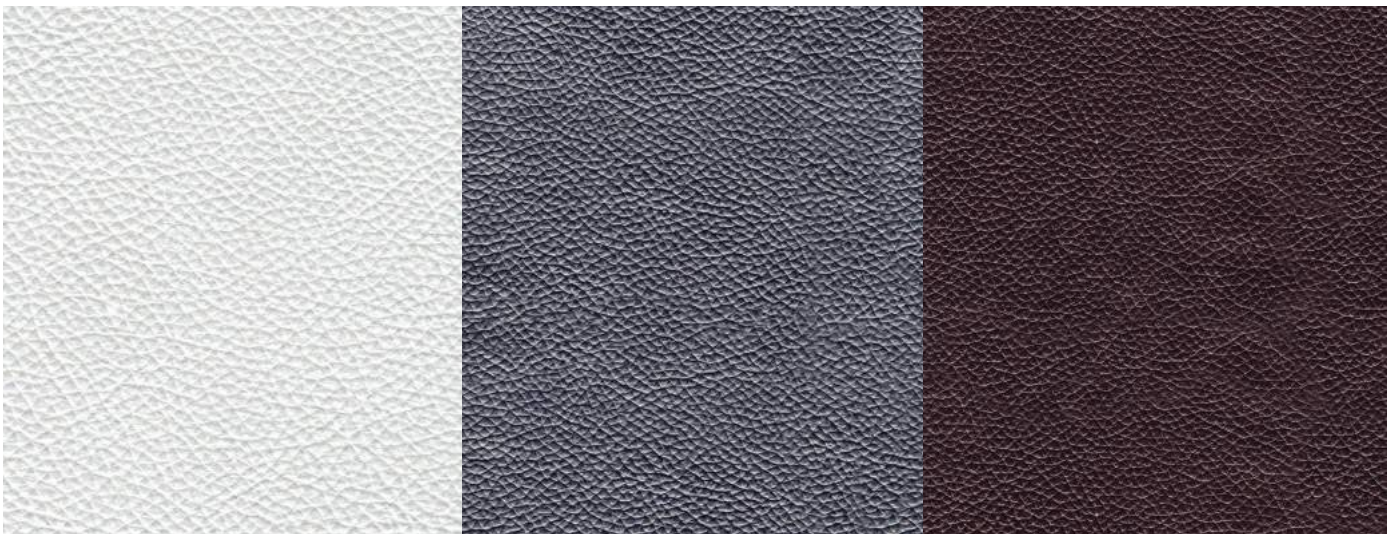
967 Avorio



993 Artico

959 Ice

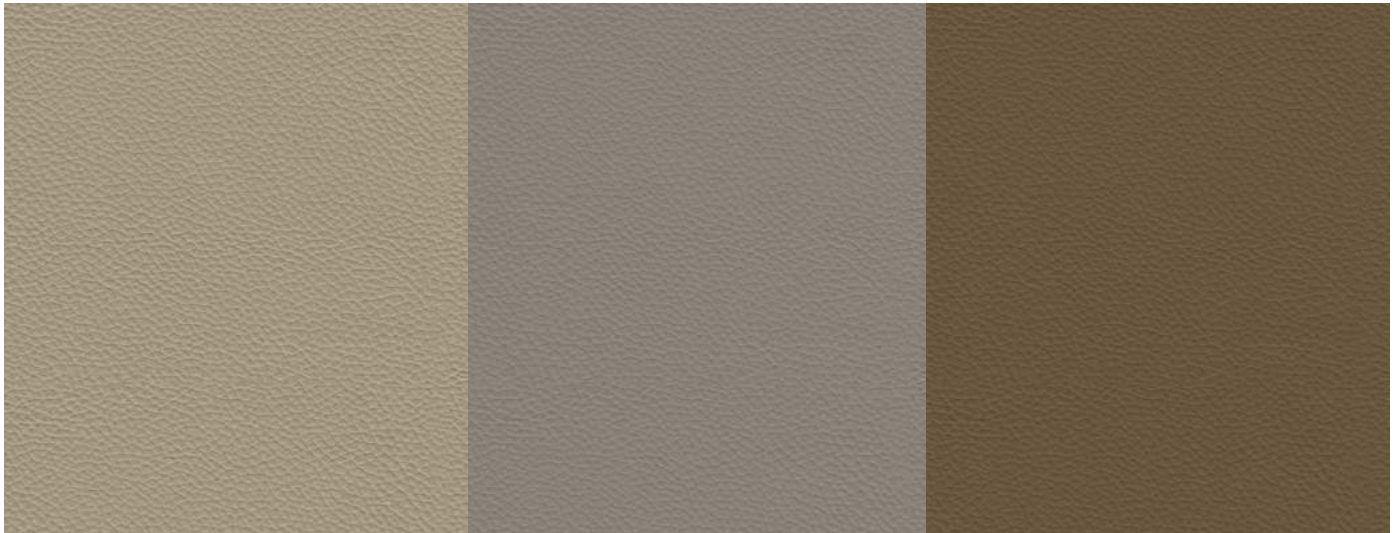
949 Cenere



PL71 Perlato Bianco

PL73 Perlato Nero

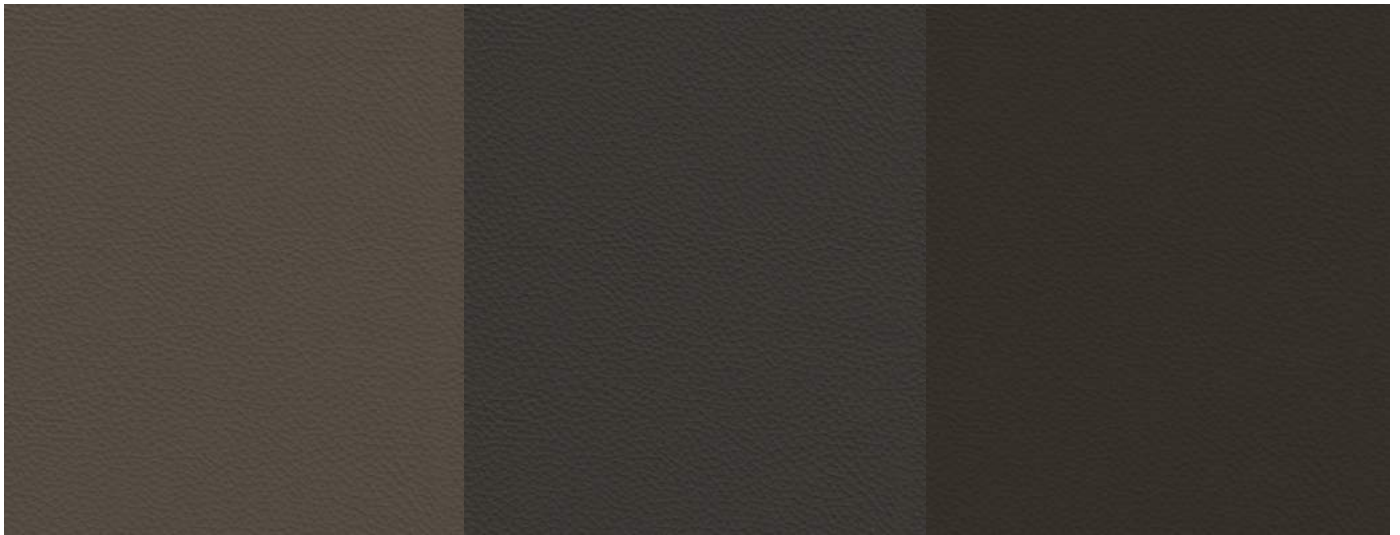
984 Bronzo



947 Oyster

948 Lino

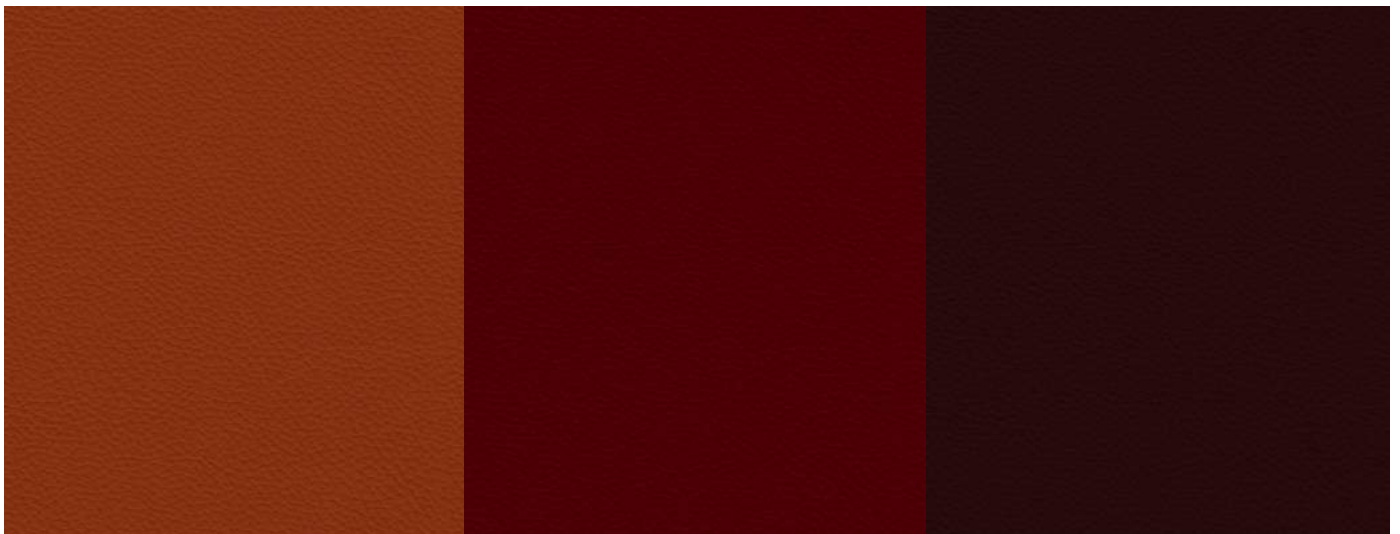
950 Tortora



951 Castoro

983 Argilla

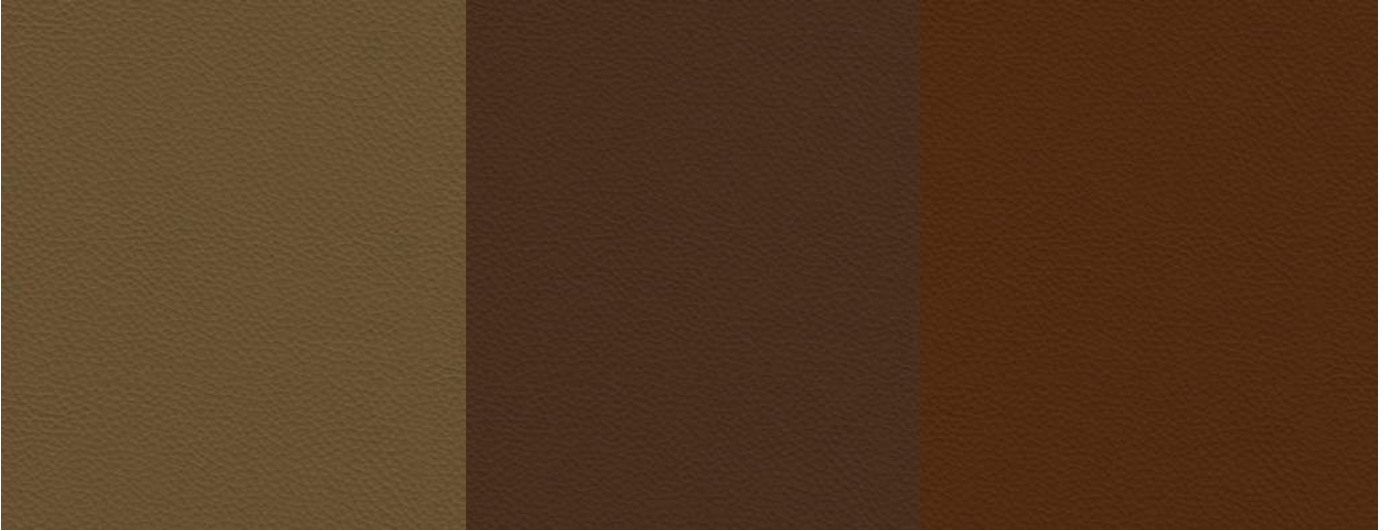
960 Bruno



992 Lobster

989 Rosso Corsa

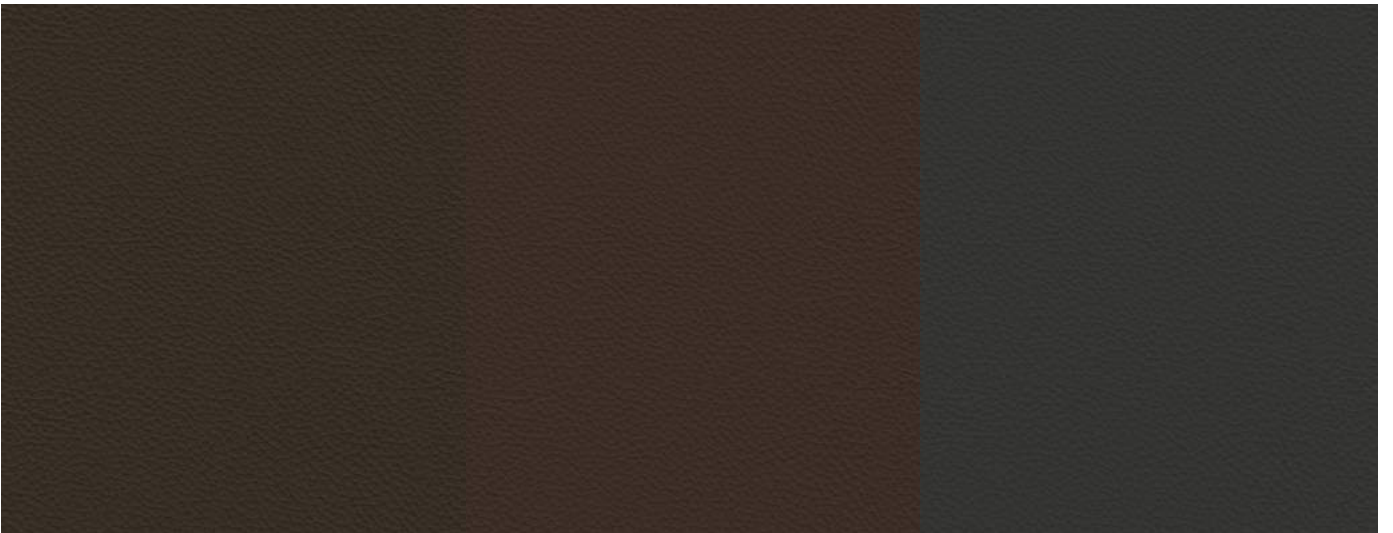
944 Bordeaux



945 Safari

981 Biscotto

982 Cognac



942 Fango

946 Marrone

952 Smoke



955 Mora

974 Capri

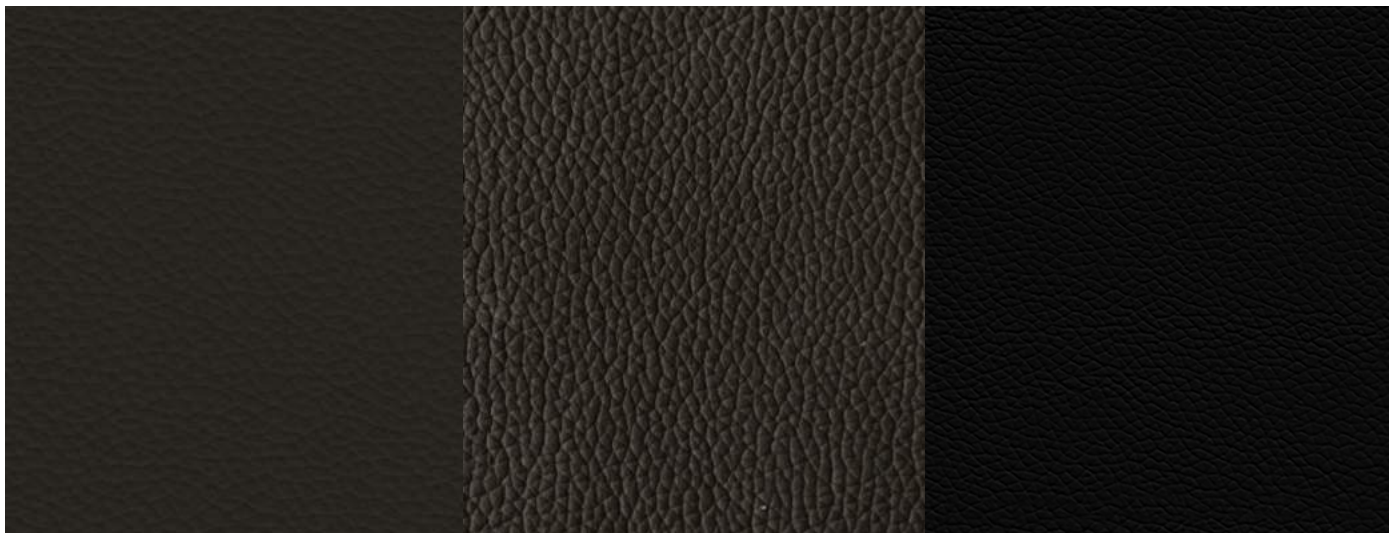
980 Ottanio



988 Tabacco

891 Testa di Moro

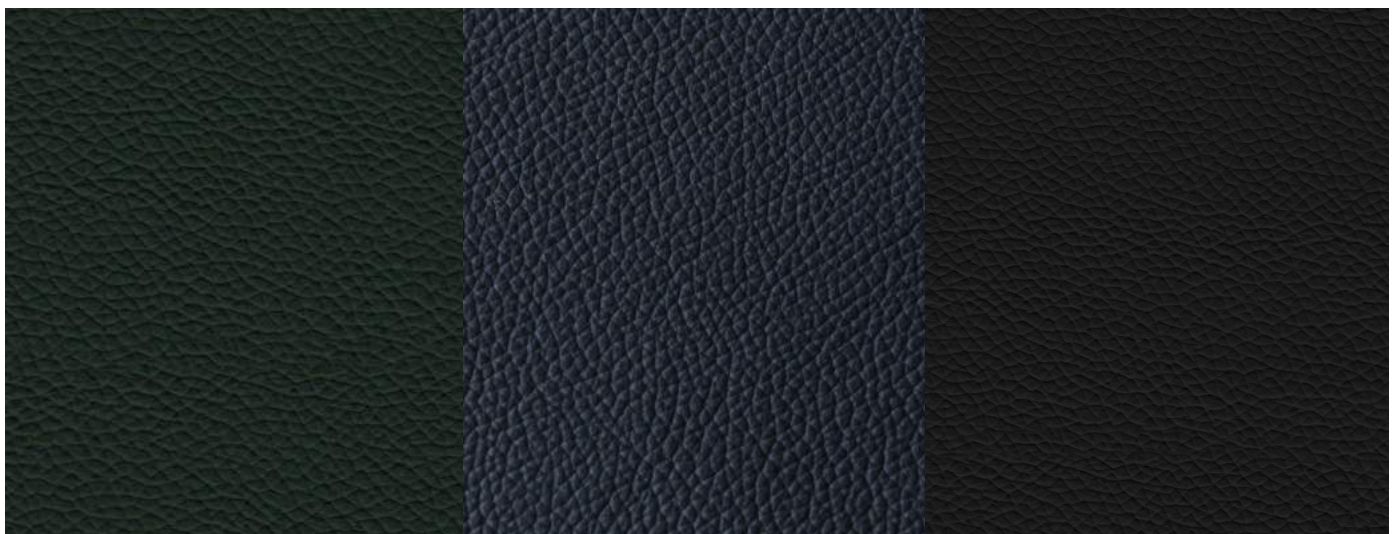
943 Moka



953 Ardesia

977 Piombo

973 Nero



987 Sherwood

940 Navy

956 Atlantico

it PULIZIA E MANUTENZIONE

Per la normale pulizia spolverare con un panno morbido e asciutto. Eventuali macchie si possono eliminare agendo con panno o cotone idrofilo umido e prodotti delicati per la pulizia quali sapone neutro o latte detergente. Solo per macchie più resistenti utilizzare prodotti specifici per la pelle. Asciugare immediatamente dopo il trattamento. Non usare mai prodotti abrasivi o aggressivi quali solventi, smacchiatori (esempio alcool). Non usare mai il vapore. Non utilizzare i prodotti per la pulizia delle scarpe. In ogni caso, ogni volta che si utilizza un prodotto nuovo per la pulizia, applicare in una zona "nascosta" per verificarne l'efficacia ed evitare il danneggiamento di zone "visibili".

ATTENZIONE

Pur nelle tolleranze d'uso, il prodotto finito può presentare variazioni di colore rispetto ai campioni forniti.

en CLEANING AND MAINTENANCE

Dust with a soft and dry cloth for the normal cleaning. Any stains can be treated and removed with a wet cloth or cotton wool and with delicate products for the cleaning like neutral soap or cleansing milk. Only for more resistant stains use specific products for the soft leather. Dry immediately after treatment. Never use abrasive or aggressive products like solvents, stain removers (i.e. alcohol). Never steam it. Don't use shoe cleaning products. In any case, every time that a new product is used for the cleaning, apply it in a "hidden" area to test its effectiveness and to avoid damages where more visible.

ATTENTION

Within the use tolerance, the finished product may vary in colour compared to our samples.

de LEDERPFLEGE

Prinzipiell sind Ledermöbel sehr einfach zu pflegen. Es genügt, wenn sie mit einem weichen Tuch abgestaubt werden. Flecken und stärkere Verschmutzungen lassen sich mit etwas Feinwaschmittel im Wasser behandeln. Die behandelte Stelle muss mit einem sauberen Tuch nachgerieben werden. Nach der Reinigung sollte das Leder mit einem Pflegemittel wie etwa einer Ledermilch oder einem Lederschaum behandelt werden. Es wird empfohlen, auf natürliche Weise zu trocknen. Unbedingt die Nähe von Wärmebestrahlung oder Dampf vermeiden. Keine lösungsmittelhaltigen Produkte wie Terpentin, Fleckenentferner, Benzin, Bohnerwachs, Schuhcreme etc. verwenden. Da jedes Material anders reagiert, ist es wichtig, die Reinigung immer erst an einer nicht gut sichtbaren Stelle auszuprobieren.

ACHTUNG

Das Endprodukt kann im Vergleich zu den hier wiedergegebenen Mustern andere Farbnuancen haben, die aber innerhalb der üblichen Toleranzen bleiben.

fr NETTOYAGE ET ENTRETIEN DU CUIR

Entretien courant avec un chiffon doux et sec. Pour toute tache, utiliser un chiffon doux et humide ou du coton, avec du savon neutre ou du lait de toilette. Sécher immédiatement après avec un chiffon doux. Pour les taches résistantes, utiliser un produit spécifique au cuir. Ne jamais utiliser de produit -abrasif-solvant - vapeur ou cirage pour chaussures. Avant l'utilisation de n'importe quel produit, toujours effectuer un test dans un endroit non visible.

ATTENTION

Tout en respectant les tolérances d'usage, le produit fini peut présenter des variations de couleurs par rapport aux échantillons.

es LIMPIEZA Y MANTENIMIENTO

Para su limpieza, utilizar un paño de algodón seco. Para otras manchas, utilizar un paño o algodón idrófilo mojado con jabón neutro o detergente en crema. Solo para manchas más difíciles, emplear productos específicos para la piel. Secar inmediatamente después del tratamiento. Nunca utilizar productos abrasivos, como los disolventes, quitamanchas (p.ej. alcohol). Nunca utilizar el vapor. Nunca utilizar productos para la limpieza de los zapatos. En todo caso, cada vez que se utiliza un producto nuevo para la limpieza, aplicarlo en una zona que "no se vea", para poder verificar la eficacia y de este manera se puede evitar dañar partes que están "a la Vista".

ATTENCION

En las tolerancias de uso, el producto acabado puede presentar variaciones de color y vetado respecto a las muestras suministradas.

рус РЕКОМЕНДАЦИИ ПО УХОДУ

При уходе за мебелью вытирать пыль сухой мягкой тряпкой. При появлении пятен протирать мокрой тряпкой или гигроскопической ватой и деликатными чистящими и средствами: нейтральным мылом или чистящим молочком. Использовать специальные средства для кожи только для устойчивых пятен, после нанесения сразу вытереть насухо. Не использовать абразивные или агрессивные средства, растворители и пятновыводитель (например, алкоголь). Не использовать пар. Не использовать средства для чистки обуви. В каждом случае использования нового средства для чистки необходимо опробовать его на незаметной части поверхности, чтобы проверить его эффективность и избежать повреждения видимых зон.

Внимание

Конечные изделия могут иметь отличия от предоставленных образцов, т.к. выполнены из натуральных материалов.

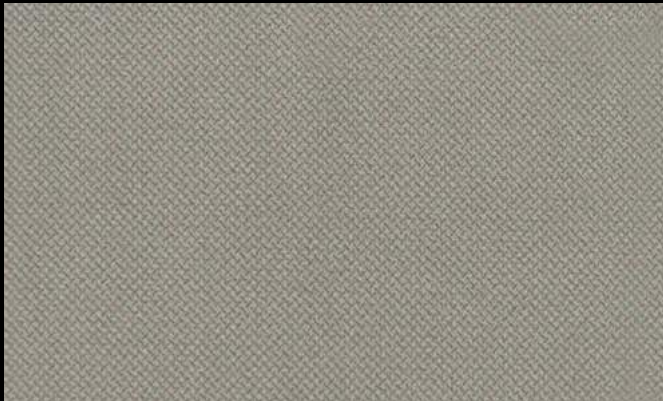
CATTELANITALIA.COM



布 ткани Tejidos Tissus Stoff Fabrics Tessuti

**cattelan
italia**

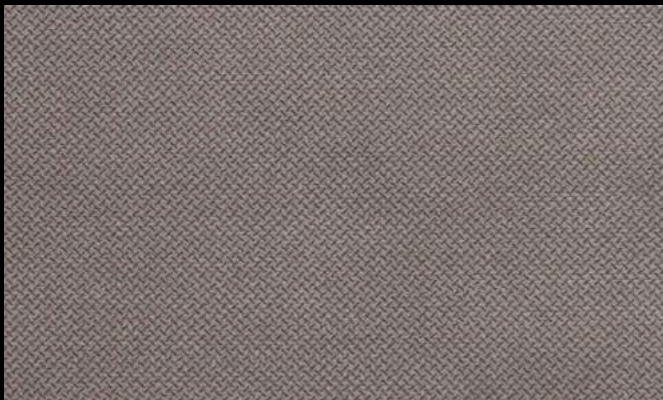
CAMPIONARIO TESSUTI



B200 composition: 100% PL



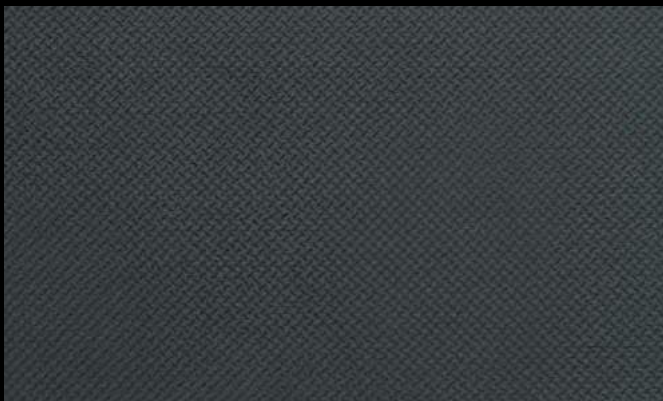
B401 composition: 100% PL



B201 composition: 100% PL



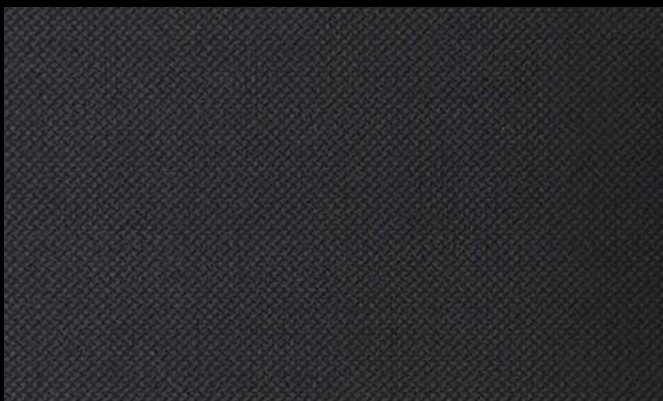
B403 composition: 100% PL



B204 composition: 100% PL



B405 composition: 100% PL

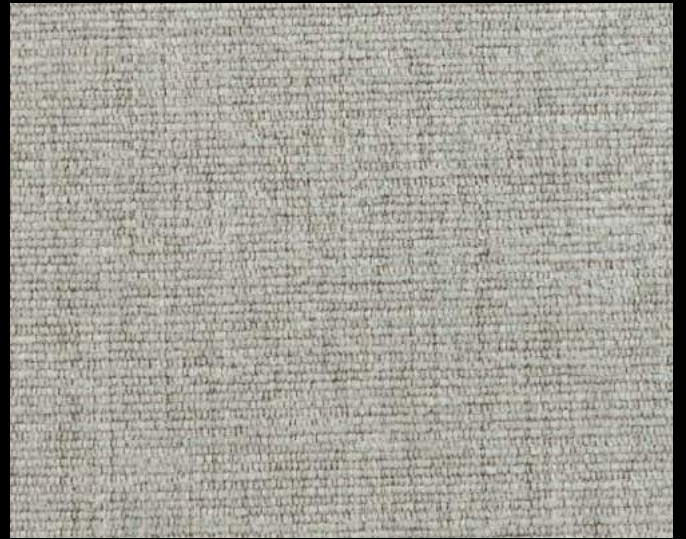


B207 composition: 100% PL





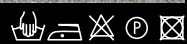
B520 composition: 45%PL 33%CO 14%VI 8%LI



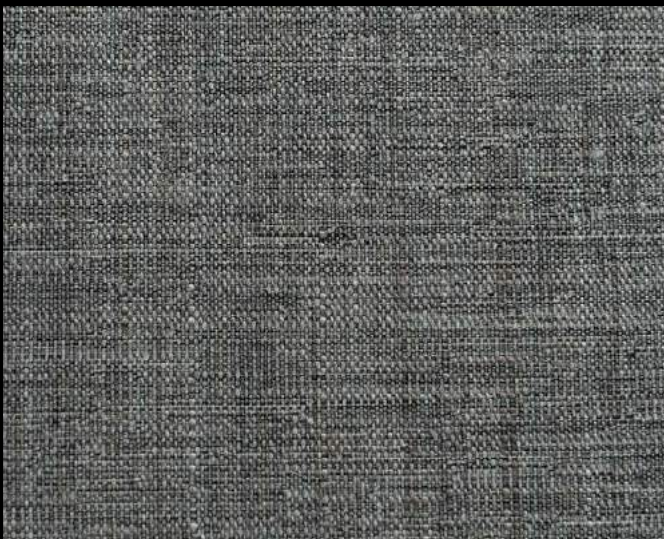
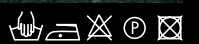
B530 composition: 51%PL 27%PC 22%CO



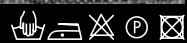
B521 composition: 45%PL 33%CO 14%VI 8%LI



B531 composition: 51%PL 27%PC 22%CO

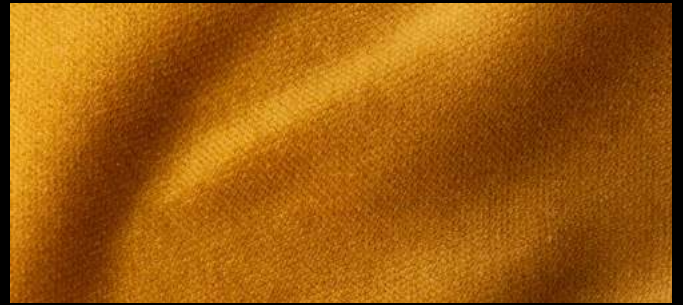


B522 composition: 45%PL 33%CO 14%VI 8%LI





B230 composition: 100%PL



B235 composition: 100%PL



B231 composition: 100%PL



B236 composition: 100%PL



B232 composition: 100%PL



B237 composition: 100%PL



B233 composition: 100%PL



B238 composition: 100%PL

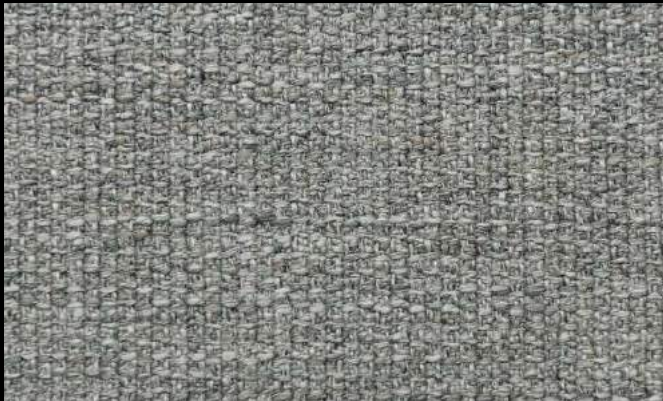


B234 composition: 100%PL



B239 composition: 100%PL





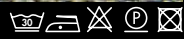
B710 composition: 65%PC 35%PL



B714 composition: 65%PC 35%PL



B711 composition: 65%PC 35%PL



B540 composition: 50%PL 27%PC 9%CO 7%LI 7%VI



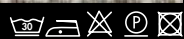
B712 composition: 65%PC 35%PL

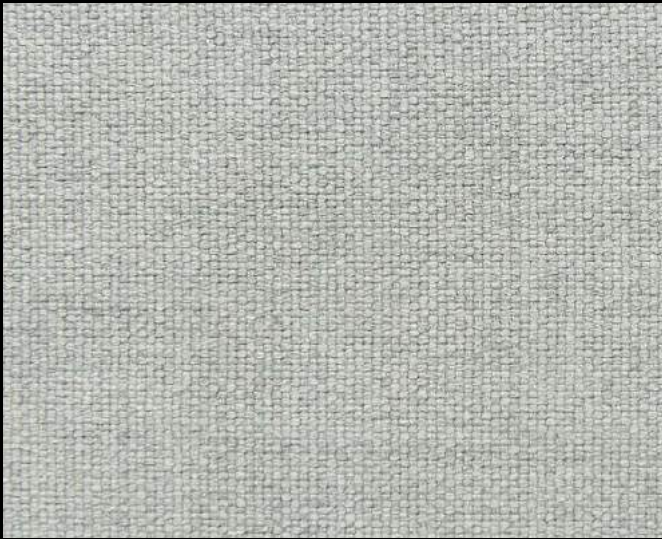


B541 composition: 50%PL 27%PC 9%CO 7%LI 7%VI

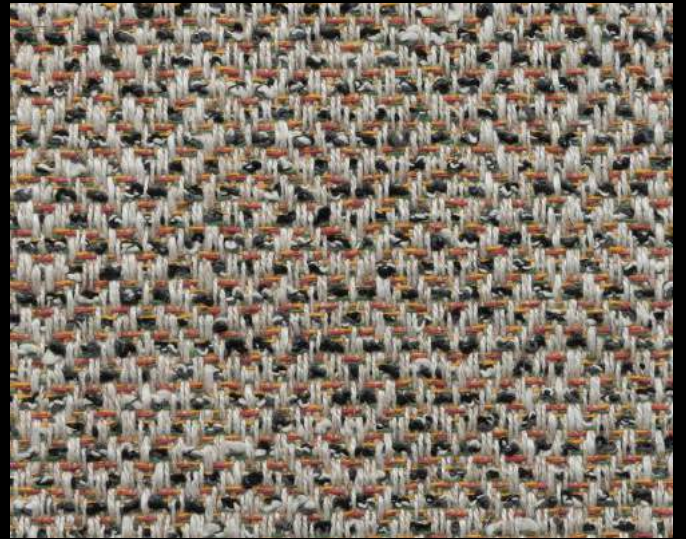


B713 composition: 65%PC 35%PL





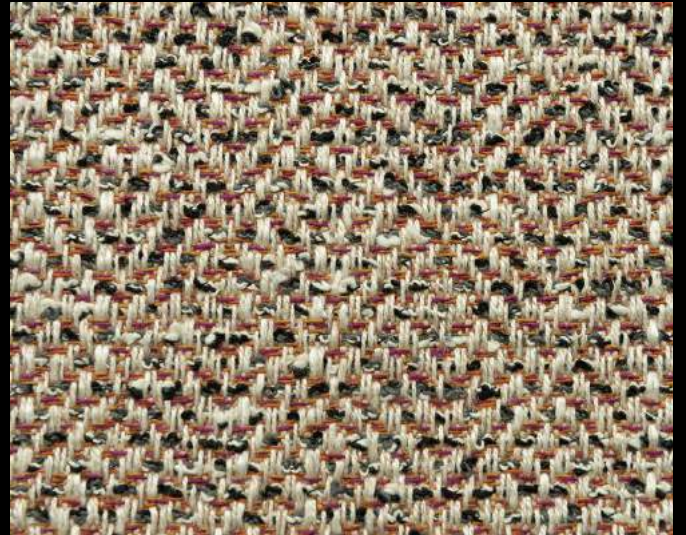
B420 composition: 100%PL



B720 comp: 50%CO 24%VI 10%PL 10%LI 3% AC 3%PA



B421 composition: 100%PL



B721 comp: 50%CO 24%VI 10%PL 10%LI 3% AC 3%PA



B422 composition: 100%PL



B722 comp: 50%CO 24%VI 10%PL 10%LI 3% AC 3%PA

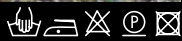




B220 composition: 63%CO 29%PL 8%AF



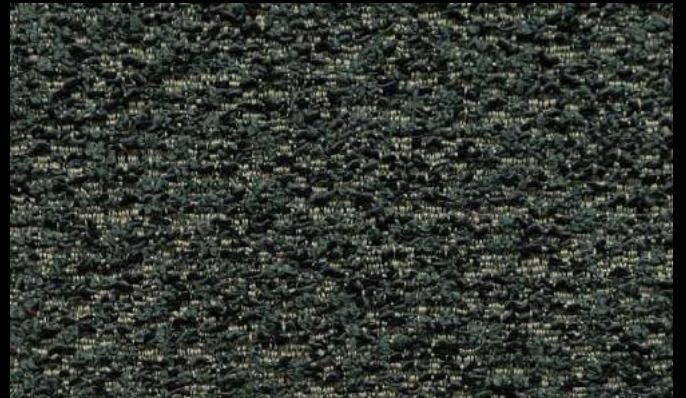
B221 composition: 63%CO 29%PL 8%AF



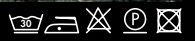
B222 composition: 63%CO 29%PL 8%AF



B431 composition: 75%PL 25%CO



B433 composition: 75%PL 25%CO



B434 composition: 75%PL 25%CO



B435 composition: 75%PL 25%CO



CATTELANITALIA.COM



CATTELAN ITALIA SPA - via pilastri 19 - 36010 Carrè / Vicenza - Italy
phone +39 0445 318711 - fax +39 0445 314289 - e-mail: info@cattelanitalia.com