



CANADA: WWW.CLUBCARD.CA
USA: WWW.CLUBCARDPRINTING.COM

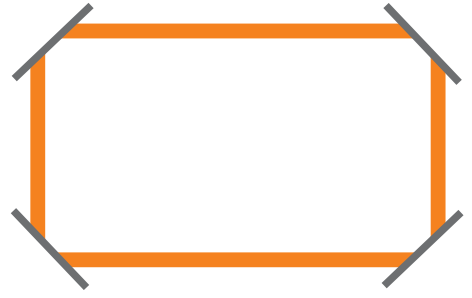
FIND US ONLINE



TYPES OF BUSINESS CARD SLITS



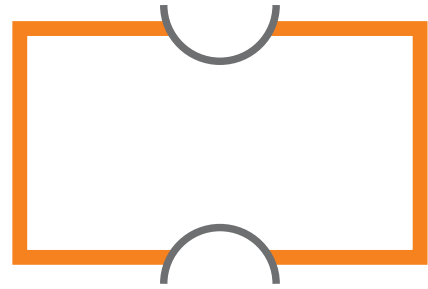
Standard Two Slits



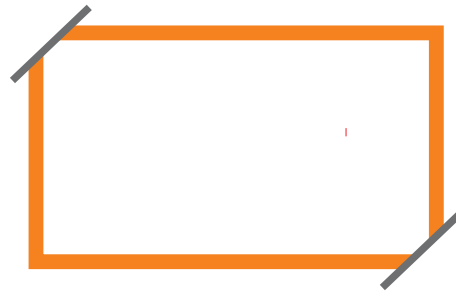
Standard Four Corner Slits



Hockey Slits



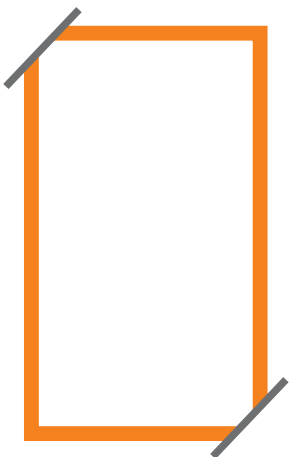
Half Moon Slits



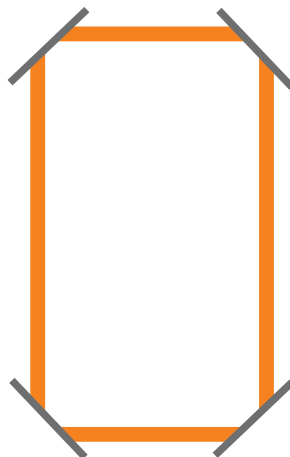
2 Standard Two Slits On One Pocket



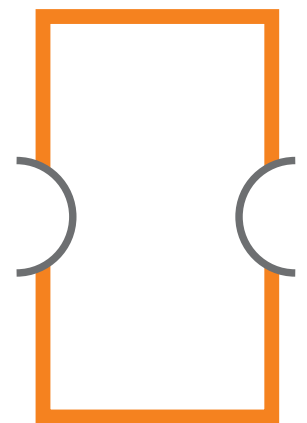
2 Hockey Slits On One Pocket



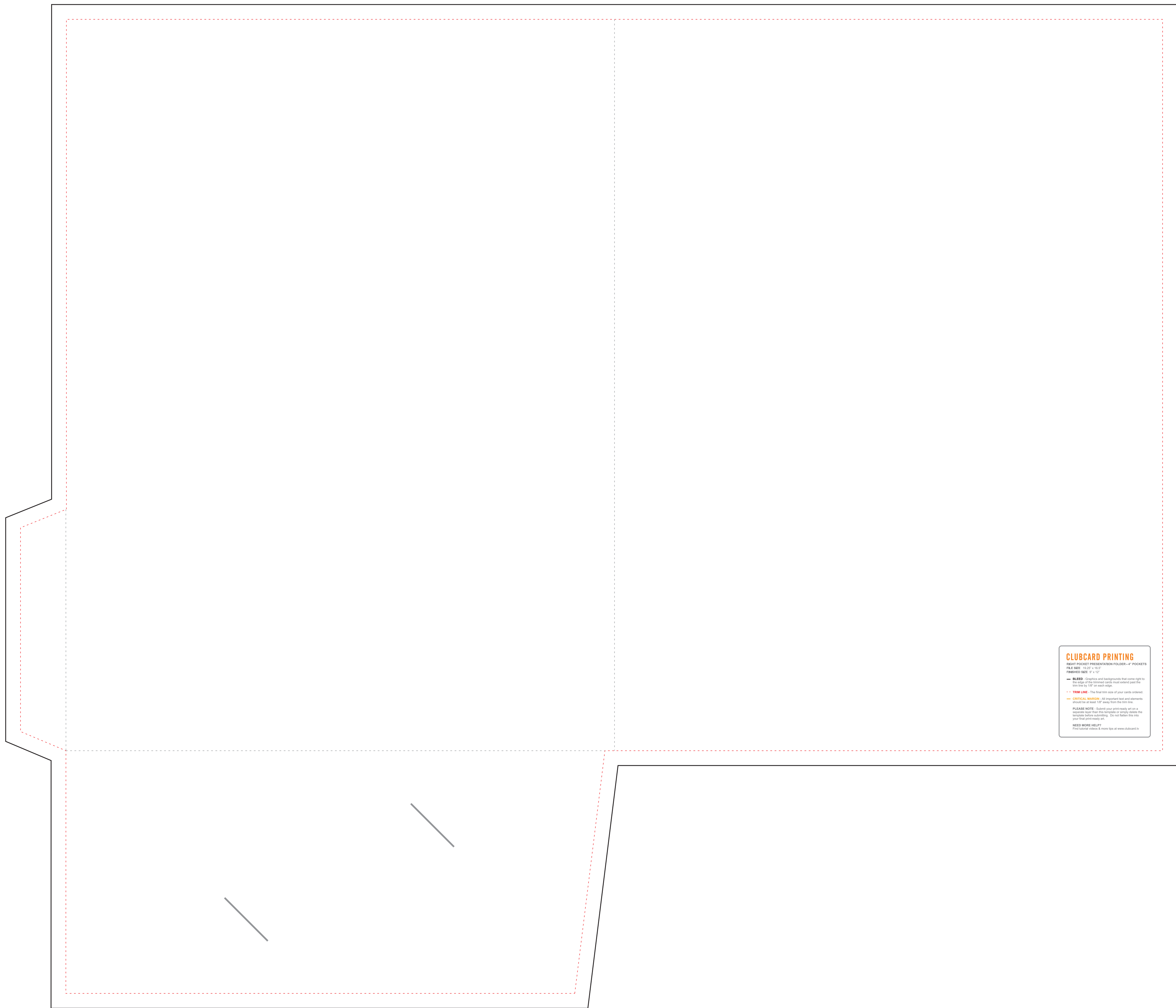
Standard Two Corner Vertical



Standard Four Corner Vertical



Half Moon Vertical



CLUBCARD PRINTING
RIGHT POCKET PRESENTATION FOLDER - 4" POCKETS
FILE SIZE: 15.25" x 10.5"
FINISHED SIZE: 9" x 12"

- **BLEED** - Graphics and backgrounds that come right to the edge of the trimmed cards must extend past the trim line by 1/8" on each edge.
- - **TRIM LINE** - The final trim size of your cards ordered.
- **CRITICAL MARGIN** - All important text and elements should be at least 1/8" away from the trim line.

PLEASE NOTE - Submit your print-ready art on a separate layer than the template or simply place the template before submitting. Do not flatten this into your final print-ready art.

NEED MORE HELP?
Find tutorial videos & more tips at www.clubcard.tv