



CANADA: WWW.CLUBCARD.CA
USA: WWW.CLUBCARDPRINTING.COM

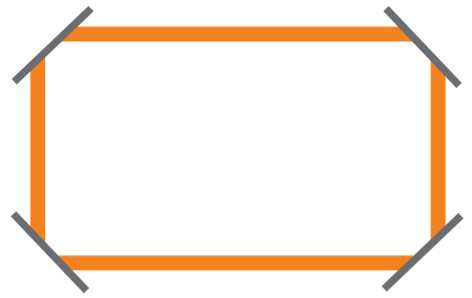
FIND US ONLINE



TYPES OF BUSINESS CARD SLITS



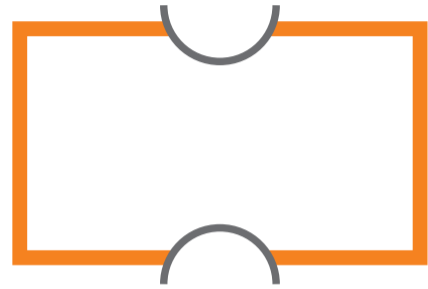
Standard Two Slits



Standard Four Corner Slits



Hockey Slits



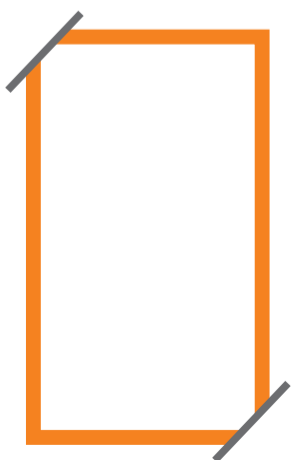
Half Moon Slits



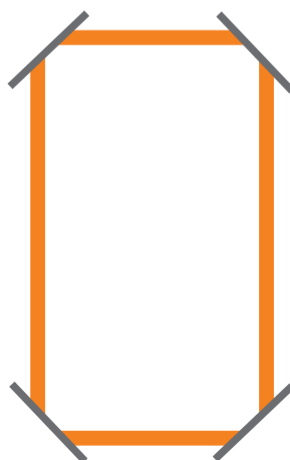
2 Standard Two Slits On One Pocket



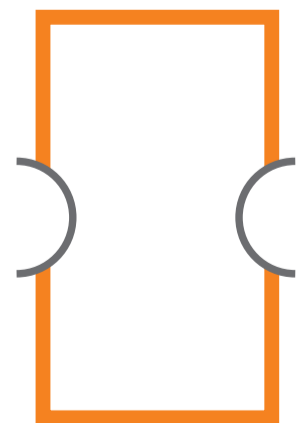
2 Hockey Slits On One Pocket



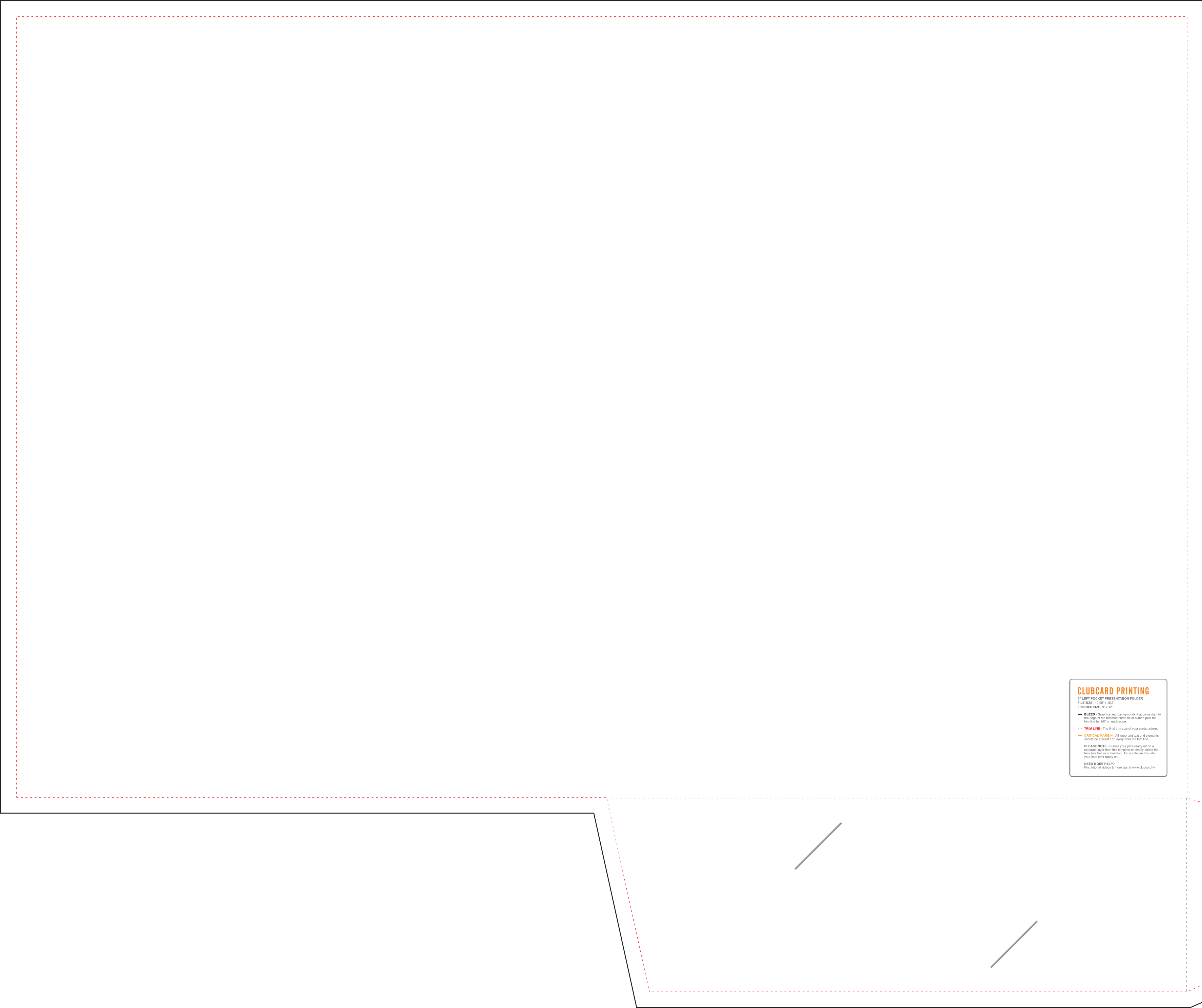
Standard Two Corner Vertical



Standard Four Corner Vertical



Half Moon Vertical



CLUBCARD PRINTING

3" LEFT POCKET PRESENTATION FOLDER

FILE SIZE - 16.25" x 11.5"

FINISHED SIZE - 9" x 12"

— **BLEED** - Graphics and backgrounds that come right to the edge of the trimmed cards must extend past the trim line by 1/8" on each edge.

— **TRIM LINE** - The final trim size of your cards ordered.

— **CRITICAL MARGINS** - All important text and elements should be at least 1/8" away from the trim line.

— **PLEASE NOTE** - Submit your print-ready art on a separate layer than the template or simply delete the template before submitting. Do not flatten this into your final print-ready art.

NEED MORE HELP?

Find tutorial videos & more tips at www.clubcard.tv

