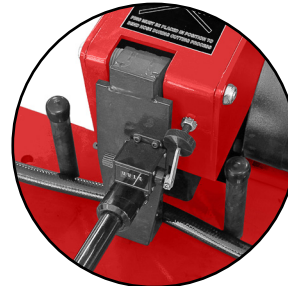




CUSTOM CRIMP™

Innovating SMART Hose Assembly Solutions Since 1979

HS-150 / HS-500 Hose Saws Series



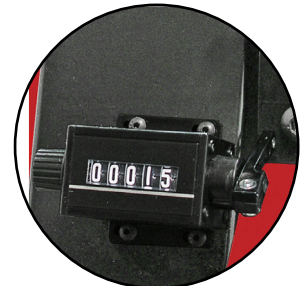
Hose Bending Pins



Mister Hose Assembly



Hose Channel System



Hose Saw Counter



Hose Helper



Available Vacuum Port

ENGINEERED TO ACCOMMODATE YOUR NEEDS

- **Mister Hose Assembly (Optional) (P/N 103172)**
Available only for the HS-500 Hose Saws.
The mister sprays a fine mist of air tool oil on the saw blade for longer blade life and cleaner cuts.
- **Hose Channel System (Optional) (P/N 103073)**
Available in 5 foot sections only for the HS-500 Hose Saws.
The Hose Channel System both measures and supports the hoses up to 2 inch diameter as they are being cut.
- **Hose Saw Counter (Included) (P/N 1895T42)**
Available only for the HS-500 Hose Saws.
The counter makes it easy to keep track of the number of cuts made and is easily reset to zero.
- **Hose Helper (Included) (P/N 103297)**
Available only for the HS-500 Hose Saws.
The Hose Helper attachment prevents the hose from being drawn back during a cut and gives the operator the ability to more precisely control the cut length.

DURABLE + RELIABLE DESIGN = PROFITABILITY

- Powerful motors (Available different configurations) to make cutting fast.
- Available different types of blades to meet your requirements and easy to change blades.
- Available Vacuum Port in all hose saws models.
- Hose Bending Pins prevent the blade from binding during a cut (Included in all models).
- Base mounting holes allow the hose saw to be bench or truck bed mounted if required.



CUSTOM CRIMP™

Innovating SMART Hose Assembly Solutions Since 1979

HS-150 / HS-500 Hose Saws Series

Serrated Blade (General Purpose):
Is recommended to cut multi-spiral hose.

Scalloped Blade (General Purpose):
Is recommended to cut multi-spiral hose.

Double Bevel Blade with SS Slots:
Is recommended for braided hose
with minimum debris during the cut.



Hose Saw Model	Blade Type	Blade Size Diameter	Arbor Size	Part Number
HS-150	Serrated (Included)	10 inch	1 inch	103502
	Scalloped (Available)	10 inch	1 inch	104034
	Double Bevel w/ SS Slots (Available)	10 inch	1 inch	104050
HS-500	Serrated (Included)	12 inch	1 inch	103187
	Scalloped (Available)	12 inch	1 inch	104033
	Double Bevel w/ SS Slots (Available)	12 inch	1 inch	102210



HS-150	HS-500
Capacity: Up to 1-1/4" 4SP	Capacity: Up to 2" 6SP
Dimensions: L: 28-3/4" x W: 21" x H: 12-1/4"	Dimensions: L: 29-3/4" x W: 26-3/4" x H: 16"
Weight: 70 lbs	Weight: 120 lbs
Power: 1HP/230V/1Phase (Standard) 1HP/110V/1Phase (Optional) 1HP/12VDC/24VDC (Optional)	Power: 5HP/230V/3Phase (Standard) 5HP/480V/3Phase (Optional) 5HP/230V/1Phase (Optional)

