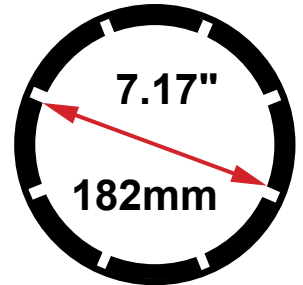




# CUSTOM CRIMP™

Innovating SMART Hose Assembly Solutions Since 1979

## CC400 General Production Hose Crimper



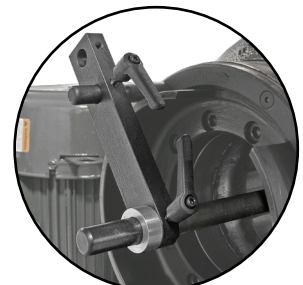
Max Head Opening  
W/O Dies



**Micrometer Style Adjustment:**  
Provides speed, precision  
and repeatability.



**Quick Change Tool:**  
Makes die changes a quick  
and simple process.



**Save Time:** Removable back  
stop for multiple crimps of the  
same hose and fitting.

### ENGINEERED TO ACCOMMODATE YOUR NEEDS

- Hose capacity up to 1-½" 6 wire hydraulic and up to 4" industrial hose.
- Maximum head opening w/o dies 7.17" (182mm).
- Metric Micrometer Style Adjustment makes precise settings of crimp diameters simple.
- Foot Switch permits dies to be "jogged" into position and keeps both hands free.
- Quick Change Tool makes die changes a quick and simple process.
- The Adjustable Back Stop speeds multiple crimps of the same hose and fitting.
- Easy grease maintenance through the 8 grease fittings.
- Protective Master Die Foam Pads between the die fingers prevent debris from dropping into the critical surfaces and causing permanent damage.
- Reservoir mounting holes allow the crimper to be bench or truck bed mounted if required.

### DURABLE + RELIABLE DESIGN = PROFITABILITY

- 265 Tons of crimping force.
- 5 HP motor wired at 230 volts 3 phase with gear pump for fast crimps (Standard).
- Complete range of dies and accessories available.



# CUSTOM CRIMP™

Innovating SMART Hose Assembly Solutions Since 1979

## CC400 General Production Hose Crimper



99mm Quick Change Tool  
(Included) P/N:102571



Foot Pedal Assembly  
(Included) P/N:104118



Manual Back Stop  
(Included) P/N:MBS-60



Die Rack 9 Station Die Holders  
(Included) P/N:102616-99mm



Adapter Die Set 145mm OD to  
99mm ID (Included) P/N:103726



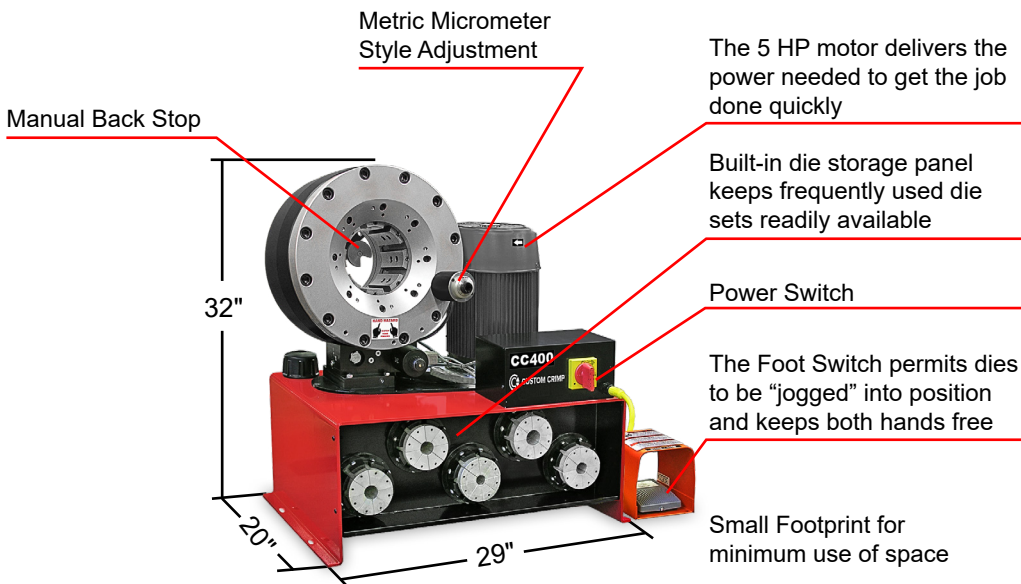
Mini Grease Gun w/ CRIMPX Die  
Lubricant 3 oz mini grease tube  
(Included) P/N:103889



CRIMPX Die Lubricant  
3 oz mini grease tube  
(Optional) P/N:103887



Crimper Stand 16 Station  
Die Holders (Optional)  
P/N:101247-99



CC400 Technical Specifications	
Crimping force:	265 Ton
Hydraulic hose capacity:	2SP: 2", 4SP: 2", 6SP: 1-1/2"
Industrial hose capacity:	4"
Crimper size:	L: 20" x W: 29" x H: 32"
Crimper weight:	660 lbs
Power:	5HP / 230V / 3Phase (Standard) 5HP / 440V / 3Phase (Optional) 5HP / 230 / 1Phase (Optional) 1HP / 12VDC (Optional) 1HP / 24VDC (Optional)
Die series:	99S / 145S / 102819
Adjustability:	Metric
Opening w/o dies:	182mm / 7.17"
Master die inside diameter:	145mm / 5.71"
Master die travel:	60mm / 2.4"
Reservoir capacity:	8 US Gallons
Oil type:	ISO 46 Hydraulic Oil

