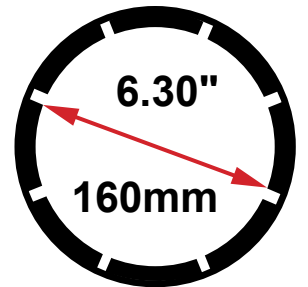




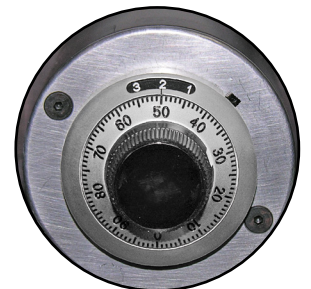
CUSTOM CRIMP™

Innovating SMART Hose Assembly Solutions Since 1979

CC200 General Production Hose Crimper



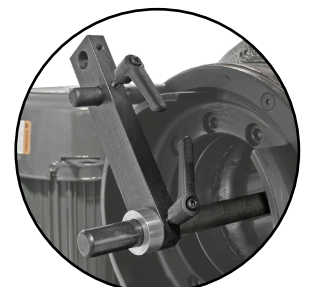
Max Head Opening
W/O Dies



Micrometer Style Adjustment:
Provides speed, precision
and repeatability.



Quick Change Tool:
Makes die changes a quick
and simple process.



Save Time: Removable back
stop for multiple crimps of the
same hose and fitting.

ENGINEERED TO ACCOMMODATE YOUR NEEDS

- Hose capacity up to 2-1/2" 6 wire hydraulic and up to 3" industrial hose.
- Maximum head opening w/o dies 6.30" (160mm).
- Metric Micrometer Style Adjustment makes precise settings of crimp diameters simple.
- Foot Switch permits dies to be "jogged" into position and keeps both hands free.
- Quick Change Tool makes die changes a quick and simple process.
- The Adjustable Back Stop speeds multiple crimps of the same hose and fitting.
- Easy grease maintenance through the 8 grease fittings.
- Protective Master Die Foam Pads between the die fingers prevent debris from dropping into the critical surfaces and causing permanent damage.
- Reservoir mounting holes allow the crimper to be bench or truck bed mounted if required.

DURABLE + RELIABLE DESIGN = PROFITABILITY

- 340 Tons of crimping force.
- 5 HP motor wired at 230 volts 3 phase with gear pump for fast crimps (Standard).
- Complete range of dies and accessories available.



CUSTOM CRIMP™

Innovating SMART Hose Assembly Solutions Since 1979

CC200 General Production Hose Crimper



99mm Quick Change Tool
(Included) P/N:102571



Foot Pedal Assembly
(Included) P/N:104118



Manual Back Stop
(Included) P/N:MBS-60



Die Rack 9 Station Die Holders
(Included) P/N:102616-99mm



Adapter Die Set 130mm OD to
99mm ID (Included) P/N:101575



Mini Grease Gun w/ CRIMPX Die
Lubricant 3 oz mini grease tube
(Included) P/N:103889



CRIMPX Die Lubricant
3 oz mini grease tube
(Optional) P/N:103887



Crimper Stand 16 Station
Die Holders (Optional)
P/N:101247-99

Notch for clearance
of 90° fittings

Metric Micrometer
Style Adjustment

Manual Back Stop

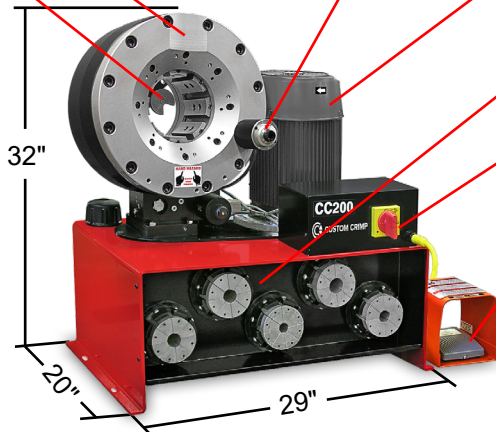
The 5 HP motor delivers the
power needed to get the job
done quickly

Built-in die storage panel
keeps frequently used die
sets readily available

Power Switch

The Foot Switch permits dies
to be "jogged" into position
and keeps both hands free

Small Footprint for
minimum use of space



CC200 Technical Specifications

| |
|--|
| Crimping force: 340 Ton |
| Hydraulic hose capacity: 2SP: 2-1/2", 4SP: 2-1/2", 6SP: 2-1/2" |
| Industrial hose capacity: 3" |
| Crimper size: L: 20" x W: 29" x H: 32" |
| Crimper weight: 635 lbs |
| Power: 5HP / 230V / 3Phase (Standard) 5HP / 440V / 3Phase (Optional) 5HP / 230 / 1Phase (Optional) 1HP / 12VDC (Optional) 1HP / 24VDC (Optional) |
| Die series: 99S / 130S |
| Adjustability: Metric |
| Opening w/o dies: 160mm / 6.30" |
| Master die inside diameter: 130mm / 5.12" |
| Master die travel: 38mm / 1.5" |
| Reservoir capacity: 8 US Gallons |
| Oil type: ISO 46 Hydraulic Oil |

